



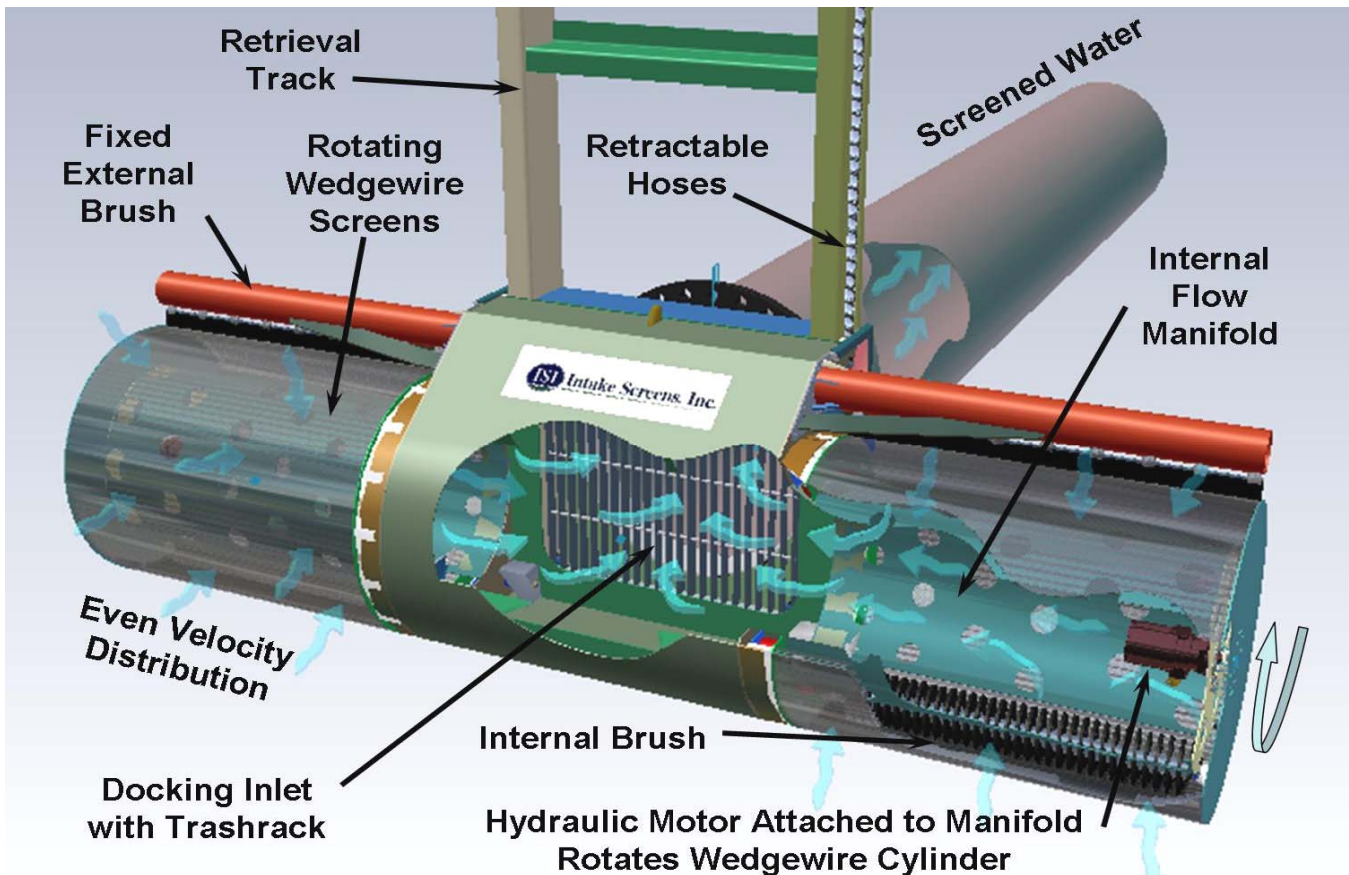
Intake Screens, Inc.

Since 1996

Revolutionary Cleaning Technology Cylinder Screen with External and Internal Brush System

(Patent No. 7,347,933)

- Strong, Innovative, Proven Technology using Wedgewire Screen
- Minimizes Headloss and Clogging Even with Fine-Mesh Openings
- Protects Downstream Equipment
- Complies with Regulatory Criteria



FEATURES:

- ◆ Powerful brushing *OUTSIDE* and *INSIDE* prevents biofouling and debris plugging
- ◆ Wedgewire screen designed for fish protection, filtration, and hydraulic loads
- ◆ Cylinder gives large screen surface area (small footprint)
- ◆ Easy retrieval on track system allows for easy inspection
- ◆ Even flow distribution for optimal cleaning and fish protection
- ◆ Hydraulic rotation is powerful, fully adjustable, and requires minimal power input
- ◆ Marine-duty hydraulic motor rotates screen for cleaning in *BOTH* Directions
- ◆ Custom-built systems available in cylinder diameters from 24 to 96 inches
- ◆ Remote monitoring and control systems available — SCADA interface
- ◆ Design services and installation assistance available

Off-Shore Intakes - River Diversions - Facility Retrofits



Left: Screens can be retrieved for inspection or during periods of non-use. Tracks can be installed on vertical walls or sloping banks.

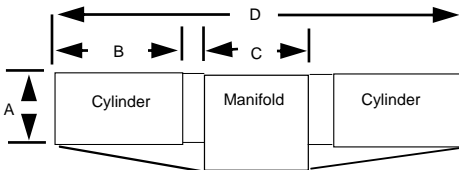
Left Below: Cylinder screens can be mounted to existing facilities and can significantly increase intake screen surface area.

Right: Trashrack protects intake while screen is retracted. Rolling manifold and seating system holds unit securely sealed over intake when deployed.

Center: Screens can be manifolded to meet additional flow requirements for large installations. 72-inch diameter screens shown.



Above: Exterior and interior brushing action keeps screen surface very clean, minimizing headloss issues.



Cylinder Screen Specifications

Model *	Unit Dimensions A - B - C - D	Unit Weight	Screen Surface Area	Allowable Flow Rates **			
				Slot Velocity @ 0.5 ft/sec (0.08 m/s)	Approach Velocity @ 0.2 ft/sec (0.06 m/s)	Approach Velocity @ 0.33 ft/sec (0.10 m/s)	Approach Velocity @ 0.4 ft/sec (0.12 m/s)
ISI T30-42	30" - 42" - 36" - 128"	1,400 lbs.	55.0 ft ² (5.11 m ²)	13.7 cfs (388 l/s)	9.4 cfs (266 l/s)	18.1 cfs (513 l/s)	22.0 cfs (623 l/s)
ISI T36-54	36" - 54" - 48" - 164"	1,900 lbs.	84.8 ft ² (7.88 m ²)	21.2 cfs (600 l/s)	17.0 cfs (481 l/s)	28.0 cfs (793 l/s)	33.9 cfs (960 l/s)
ISI T42-66	42" - 66" - 60" - 200"	2,200 lbs.	119.5 ft ² (11.10 m ²)	29.9 cfs (847 l/s)	23.9 cfs (676 l/s)	39.4 cfs (1116 l/s)	47.8 cfs (1354 l/s)
ISI T48-72	48" - 72" - 60" - 212"	2,900 lbs.	150.8 ft ² (14.01 m ²)	37.5 cfs (1062 l/s)	30.2 cfs (885 l/s)	48.8 cfs (1382 l/s)	60.3 cfs (1708 l/s)
ISI T60-90	60" - 90" - 60" - 248"	3,800 lbs.	235.6 ft ² (21.89 m ²)	58.9 cfs (1668 l/s)	47.1 cfs (1334 l/s)	77.8 cfs (2203 l/s)	94.2 cfs (2667 l/s)

*** Available in Diameters from 24 to 96 inches (with custom lengths) — Call for more information**

- ** 1) Allowable flows based on using wedgewire screens with 50% open area. Typical screen with 1.75mm wire is shown below;
 2) Maximum recommended slot velocity is 0.5 fps for most applications subjected to heavy debris or poor hydraulic conditions;
 3) Cylinder lengths are typically limited to 1.5 times the diameter as shown in the table above. Shorter cylinder lengths are available;
 4) Many fisheries agencies use a maximum approach velocity criteria instead of slot velocity. Approach Velocity is the component of velocity perpendicular to the screen surface and measured 3 inches away. A minimum open area is generally specified;
 5) Single cylinder units (i.e. "drums" or half of a "T") are also available;
 6) Regulatory design criteria varies and typically depends on fish protection needs. Call for information on slot sizes below 1mm.



For more information contact:

E-mail: screens@intakescreensinc.com

Website: www.IntakeScreensInc.com

Office: 8417 River Road, Sacramento, CA 95832

Phone: (916) 665-2727 **Fax:** (916) 665-2729

