

## Registration

Name & Degree

Address

State/Zip

Email

Advance registration before March 22, 2017

Individual \$100 (advance) / \$120 (on-site)

Trainee/Student \$25 (advance) / \$35 (on-site)

Total \$ \_\_\_\_\_

Return with your check payable to **WNEPS** to:

**Christine Desmond, MD**, Registrar

47 Trumbull Street, Suite 103, New Haven, CT 06510

or

Register on-line @ [www.wneps.org](http://www.wneps.org)

CME/CEC Registration/Accreditation

CME: This activity has been planned and implemented in accordance with the accreditation requirements and policies of the Accreditation Council for Continuing Medical Education (ACCME) through the joint providership of the American Psychoanalytic Association and the Western New England Psychoanalytic Society.

The American Psychoanalytic Association is accredited by the ACCME to provide continuing medical education for physicians.

The American Psychoanalytic Association designates this Live Activity for a maximum of 3.5 AMA PRA Category I Credit(s).TM. Physicians should claim only the credit commensurate with the extent of their participation in the activity.

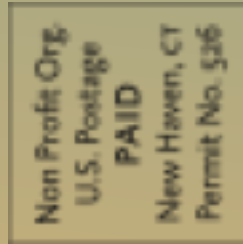
**IMPORTANT DISCLOSURE INFORMATION FOR ALL LEARNERS:**  
None of the planners or presenters of this CME program have any relevant financial relationships to disclose.

CEC: This program has been approved for 3.5 Continuing Education Credits by NASW/CT and meets the continuing education criteria for CT Social Work Licensure renewal.

A Certificate of Attendance for WNE Programs can be used to fulfill continuing education requirements for CT psychologists.

CME/CEC credit requires a signed attendance form and completed evaluation form.

Certificates will be mailed to you.



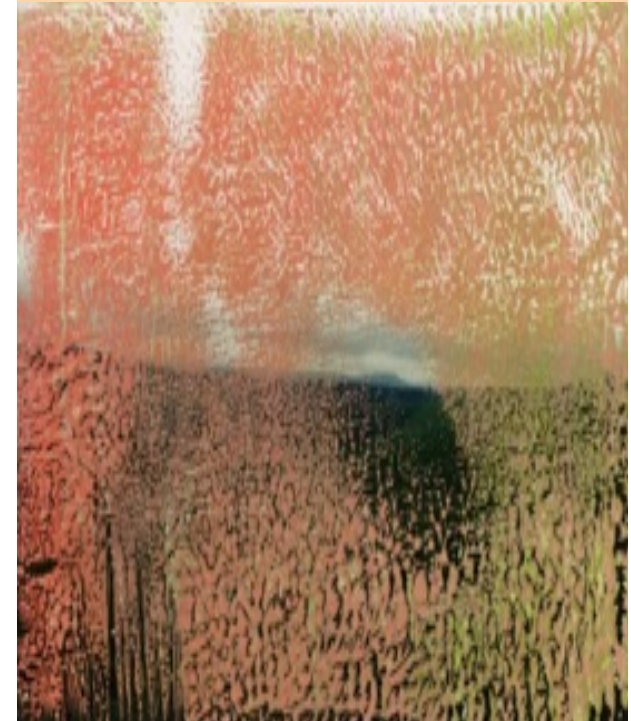
**The Western New England Psychoanalytic Society**

**255 Bradley Street**

**New Haven, Connecticut 06510**

**WNEPS 2017 SPRING SYMPOSIUM**

## 2017 WNEPS SPRING SYMPOSIUM



**Saturday April 22, 2017**  
8:30am - 12:45pm  
**YALE CHILD STUDY CENTER**

**Primary Process, Psychotic Thinking,  
And Unrepresented States**

**Howard B. Levine, MD, Kay Long, Ph.D,  
Richard L. Munich, MD**

Sponsored by:  
**The Western New England  
Psychoanalytic Society**

## Program

In our consulting room we often encounter dimensions of the mind that are difficult to comprehend and are often not communicated through symbolic representation. Our symposium will explore ways of better understanding these primitive states utilizing both Freud's theory of primary and secondary process as well as contemporary views of unrepresented mental states.

**Howard Levine** will explore a theory of psychic representations and their vicissitudes embedded in Freud's writings. Dr. Levine will discuss how Freud, in introducing his structural theory, privileged consideration of action and relation to reality over consideration of psychic representation, and moved away from any further elaboration of a theory of psychic representation. Dr. Levine will also examine the work of Andre Green, Bion and Ferro, as these thinkers offer the opportunity to revisit, extend and apply Freud's theory of representation to problems encountered in contemporary practice. Dr. Levine will address these developments in relation to psychosis, primary process and borderline states.

**Richard Munich** will present work with patients for whom histories of abuse and deprivation have impaired their capacity for symbolic representation. He will explore how difficulties with attachment complicate the narrative and therapeutic process.

**Kay Long** will lead the discussion. In conversation with both the panelists and the audience, Dr. Long will guide us as we broaden our appreciation of the complicated nature of unrepresented states in our clinical practice.

*Cover Photo:* Gerhard Richter, 1988; Saint Louis Art Museum, St. Louis, US

**Howard B. Levine, M.D.** is a member of the Contemporary Freudian Society, the Newport (California) Psychoanalytic Institute and the Psychoanalytic Institute of New England, East (PINE), a former member of the Board of Directors of the IPA, on the editorial Board of the IJP and Psychoanalytic Inquiry and in private practice in Brookline, Massachusetts. He has authored many articles, book chapters, and reviews on psychoanalytic process and technique, intersubjectivity, the treatment of primitive personality disorders, and the consequences and treatment of early trauma and childhood sexual abuse. He is the editor of *Adult Analysis and Childhood Sexual Abuse* (Analytic Press 1990), co-editor of several books, most recently (with David Power) of *Engaging Primitive Anxieties of the Emerging Self* (Karnac forthcoming).

**Kay Long, Ph.D.** is a psychologist and psychoanalyst in private practice in New Haven. She is an Associate Clinical Professor in the Psychiatry Department of the Yale School of Medicine, and a Training and Supervising Analyst at the Western New England Institute for Psychoanalysis. In addition to clinical work, she is active in teaching and supervising in the Yale Psychiatry Department and at the Western New England Institute for Psychoanalysis, where she currently serves on the Education Committee and as Director of the Scholar's Program. Her current teaching and writing interests involve contemporary Kleinian approaches to therapeutic process and change. She has served on the editorial board of the *International Journal of Psychoanalysis*, and is currently a Fellow of the College of the *International Journal of Psychoanalysis*. She is co-editor (with Penelope Garvey) of *The Kleinian Tradition: Evolution of Theory and Practice* (Karnac 2017).

**Richard L. Munich, M.D.** is a psychiatrist and psychoanalyst, Clinical Professor of Psychiatry at the Weill-Cornell Medical College, and Supervising and Training Analyst at the Columbia Center for Psychoanalytic Training & Research, New York. A graduate of the Western New England Institute for Psychoanalysis, Dr. Munich worked for most of his career in hospitals for the seriously disturbed. He is currently in private practice in New York City. His several publications include book reviews and articles on symptom formation, psychotherapy for patients with borderline and psychotic conditions, hospital psychiatry, and aspects of leadership and group dynamics. He coedited a textbook on inpatient psychiatry that was released in 2008.

## The Western New England Psychoanalytic Society

**Spring Symposium 2017**  
Saturday April 22, 2017 8:30 - 12:45

**Yale Child Study Center**  
230 South Frontage Rd, New Haven

<b>8:30-9:00</b>	Breakfast and Registration
<b>9:00-9:10</b>	Opening Remarks Angela Capiello, MD, PhD Elizabeth Wilson, MD
<b>9:10-9:55</b>	<b>Psychotherapeutic Hide and Seek:</b> Helping the dyad find words Richard L. Munich, MD
<b>9:55-10:10</b>	Questions and Answers
<b>10:10-10:55</b>	<b>Primary Process, Psychotic Thinking, and Unrepresented States</b> Howard B. Levine, MD
<b>10:55-11:10</b>	Questions and Answers
<b>11:10-11:40</b>	Coffee and Book Raffle
<b>11:40-12:20</b>	<b>Discussion</b> Kay Long, PhD
<b>12:20-12:45</b>	Questions and Answers

For directions and parking information contact  
Anne Rodems @ 203-562-2103 or  
by email: [arodems@wneps.org](mailto:arodems@wneps.org)  
or visit our website: [www.wneps.org](http://www.wneps.org)

**Symposium Committee**  
Chair: Angela Capiello, MD, PhD;  
Co-Chair: Elizabeth Wilson, MD

Mary Ayre, MD, Christine Desmond, MD, Deborah Fried, MD,  
Christopher Leveille, Psy.D, Linda Mayes, MD, Joan Poll, MD,  
Neayka Sahay, MD, Jean Vogel, MD, Erica Weiss, MD