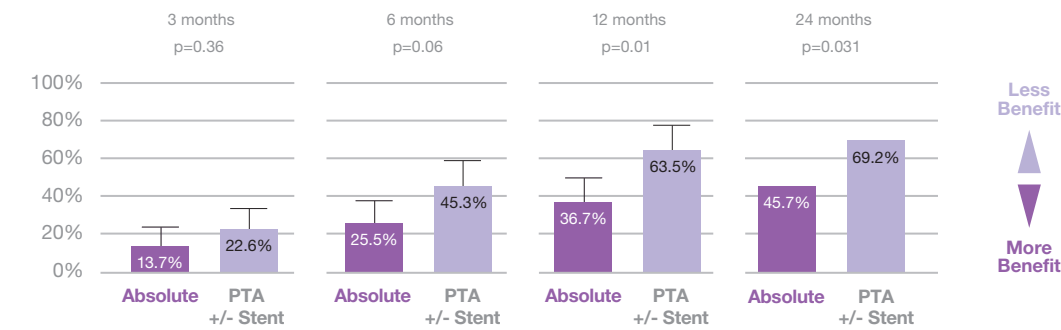


# Delivering Absolute Performance

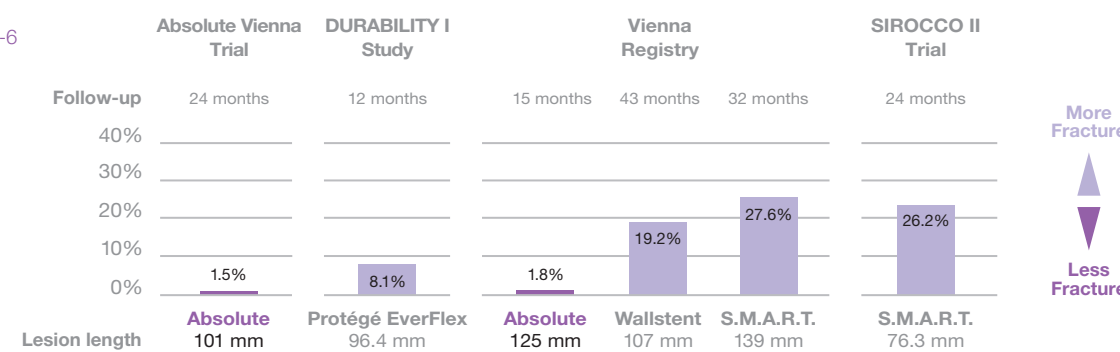
**Absolute stent shows sustained benefit when compared to PTA<sup>1-3</sup>**

## Binary Restenosis



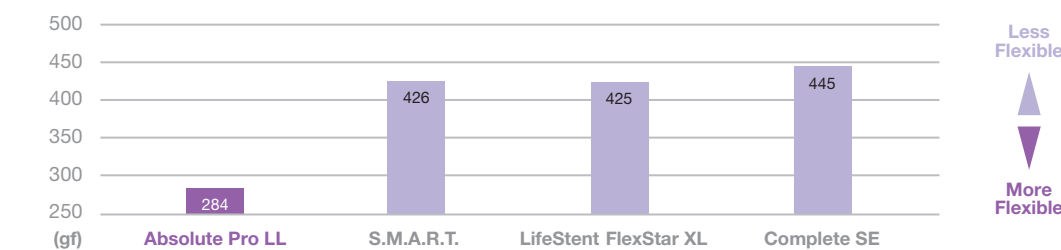
**Lowest fracture rate across trials<sup>1-6</sup>**

## Stent Fracture Rate (per limb)



**Best-in-class flexibility during stent delivery**

## Flexibility of Sheathed Stent on Delivery System



Data on file at Abbott Vascular.

<sup>1</sup> M. Schillinger et al. / NEJM, Vol 354, N18: 1879-1888 /Absolute Vienna Trial  
<sup>2</sup> M. Schillinger / Circulation 2007; 115:2745-2749  
<sup>3</sup> S. Sabelli / J Endovasc Ther 2007; 14:431-437  
<sup>4</sup> O. Schlager et al / J Endovasc Ther 2005; 12:676-684  
<sup>5</sup> S.H. Duda et al. J Endovasc Ther 2006;13:701-710  
<sup>6</sup> Marc Bosiers et al. J Endovasc Ther 2009; 16:261-269

## Absolute Pro LL Ordering Information

STENT DIAMETER (mm)	STENT LENGTH (mm)	STOCK NUMBER CATHETER LENGTH		REFERENCE VESSEL DIAMETER (mm)	SHEATH COMPATIBILITY	GUIDING CATHETER COMPATIBILITY
		80 (cm)	135 (cm)			
5	120	1012008-120	1012014-120	3.6-4.5	6F	8F
5	150	1012008-150	1012014-150	3.6-4.5	6F	8F
6	120	1012009-120	1012015-120	4.3-5.4	6F	8F
6	150	1012009-150	1012015-150	4.3-5.4	6F	8F
7	120	1012010-120	1012016-120	5.0-6.3	6F	8F
7	150	1012010-150	1012016-150	5.0-6.3	6F	8F
8	120	1012011-120	1012017-120	5.7-7.3	6F	8F
8	150	1012011-150	1012017-150	5.7-7.3	6F	8F

## Absolute Pro Ordering Information

STENT DIAMETER (mm)	STENT LENGTH (mm)	STOCK NUMBER CATHETER LENGTH		REFERENCE VESSEL DIAMETER (mm)	SHEATH COMPATIBILITY	GUIDING CATHETER COMPATIBILITY
		80 (cm)	135 (cm)			
5	20	1011914-020	1011920-020	3.6-4.5	6F	8F
5	30	1011914-030	1011920-030	3.6-4.5	6F	8F
5	40	1011914-040	1011920-040	3.6-4.5	6F	8F
5	60	1011914-060	1011920-060	3.6-4.5	6F	8F
5	80	1011914-080	1011920-080	3.6-4.5	6F	8F
5	100	1011914-100	1011920-100	3.6-4.5	6F	8F
6	20	1011915-020	1011921-020	4.3-5.4	6F	8F
6	30	1011915-030	1011921-030	4.3-5.4	6F	8F
6	40	1011915-040	1011921-040	4.3-5.4	6F	8F
6	60	1011915-060	1011921-060	4.3-5.4	6F	8F
6	80	1011915-080	1011921-080	4.3-5.4	6F	8F
6	100	1011915-100	1011921-100	4.3-5.4	6F	8F
7	20	1011916-020	1011922-020	5.0-6.3	6F	8F
7	30	1011916-030	1011922-030	5.0-6.3	6F	8F
7	40	1011916-040	1011922-040	5.0-6.3	6F	8F
7	60	1011916-060	1011922-060	5.0-6.3	6F	8F
7	80	1011916-080	1011922-080	5.0-6.3	6F	8F
7	100	1011916-100	1011922-100	5.0-6.3	6F	8F
8	20	1011917-020	1011923-020	5.7-7.3	6F	8F
8	30	1011917-030	1011923-030	5.7-7.3	6F	8F
8	40	1011917-040	1011923-040	5.7-7.3	6F	8F
8	60	1011917-060	1011923-060	5.7-7.3	6F	8F
8	80	1011917-080	1011923-080	5.7-7.3	6F	8F
8	100	1011917-100	1011923-100	5.7-7.3	6F	8F
9	20	1011918-020	1011924-020	6.4-8.2	6F	8F
9	30	1011918-030	1011924-030	6.4-8.2	6F	8F
9	40	1011918-040	1011924-040	6.4-8.2	6F	8F
9	60	1011918-060	1011924-060	6.4-8.2	6F	8F
9	80	1011918-080	1011924-080	6.4-8.2	6F	8F
9	100	1011918-100	1011924-100	6.4-8.2	6F	8F
10	20	1011919-020	1011925-020	7.1-9.1	6F	8F
10	30	1011919-030	1011925-030	7.1-9.1	6F	8F
10	40	1011919-040	1011925-040	7.1-9.1	6F	8F
10	60	1011919-060	1011925-060	7.1-9.1	6F	8F
10	80	1011919-080	1011925-080	7.1-9.1	6F	8F
10	100	1011919-100	1011925-100	7.1-9.1	6F	8F

Please contact your local representative for more information.

**Abbott Vascular Australia**      **Abbott Vascular New Zealand**

Level 8, 15 Talavera Road  
 North Ryde NSW 2113  
 Tel: 1800 550 939  
 Tel: +61 2 8879 2800  
 Fax: +61 2 8879 2805

Level 3, 6 Kingdon Street  
 New Market Auckland  
 Tel: 0800 827 285  
 Tel: +64 524 6580  
 Fax: +64 9524 6584

All illustrations included are artist's renditions.  
 All tests performed by and data on file at Abbott Vascular.  
 ©

Absolute Pro is a trademark of Abbott Laboratories. S.M.A.R.T. self-expanding stent system is a trademark of Cordis, a J&J Company. LifeStent FlexStar XL Vascular Stent System is a trademark of C. R. Bard, Inc. Wallstent Endoprosthesis is a registered trademark of Boston Scientific Corp. Protégé EverFlex Self-Expanding Peripheral Stent System is a trademark of ev3 Inc. Complete SE iliac is a trademark of Medtronic, Inc.

This product is intended for use by or under the direction of a physician. Prior to use, it is important to read the package insert thoroughly for Instructions for Use, warnings and potential complications associated with use of this device.  
 Information contained herein for distribution in Australia and New Zealand only.

For more information, visit our web site at [abbottvascular.com](http://abbottvascular.com)  
 ©2009 Abbott Laboratories. All rights reserved. ANZ 080116 03/12.



# Absolute Pro LL

## Peripheral Self-Expanding Stent System

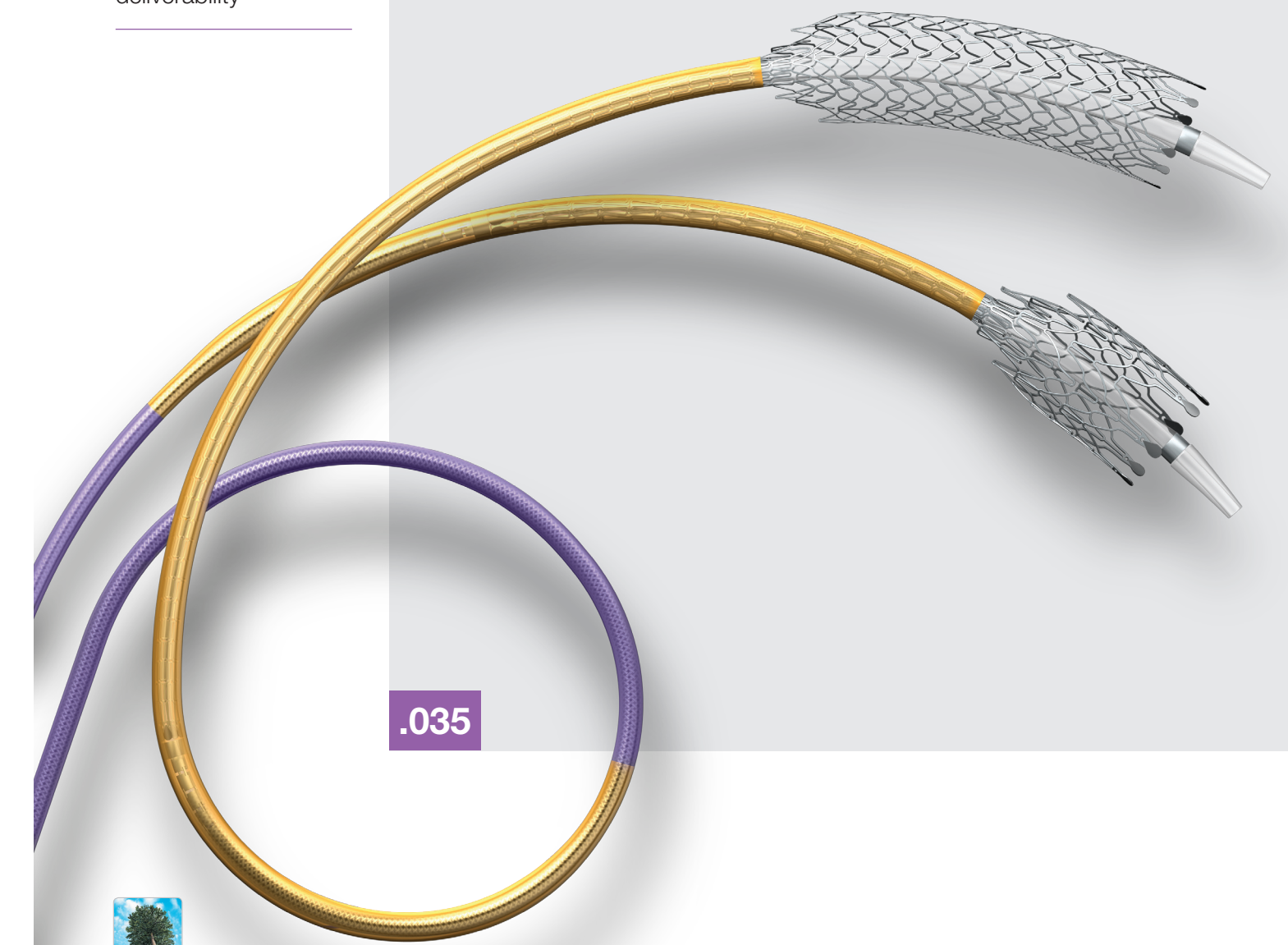
Clinically proven to treat long SFA lesions<sup>®</sup>

Superb durability

Uncompromised deliverability

# Delivering Absolute Performance

## Extending Our Legacy



.035



Endovascular Commitment



# Absolute Pro LL

Peripheral Self-Expanding Stent System

Delivering Absolute Performance

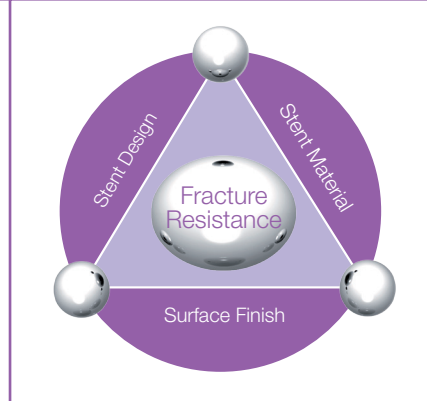
Extending Our Legacy

## Clinically Proven to Treat Long SFA Lesions<sup>1-3</sup>



- Lower binary restenosis rate and sustained clinical benefit with Absolute stent compared with PTA
- Quality of life significantly improved after Absolute stenting compared to PTA

## Superb Durability



- Excellent stent fracture resistance<sup>1-4</sup>
  - Stent material and stent design for outstanding flexibility and vessel conformability
  - Advanced stent electro and micro polish for optimal surface finish to enhance stent durability

## Uncompromised Deliverability



- Triaxial technology with:
  - Stabilizing sheath to absorb stored energy and minimize friction during deployment
  - I-Beam laser-cut hypotube for longitudinal strength, flexibility and pushability during stent delivery
- Ergonomic handle for easy one-handed, controlled deployment

## Triaxial Technology

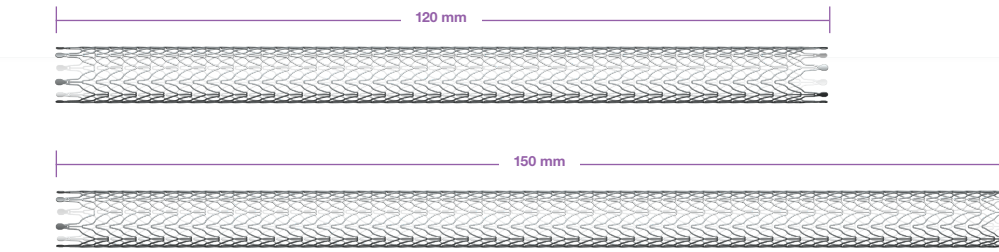
**Stabilizing Sheath**  
for deployment accuracy

**I-Beam**  
for kink resistance and uncompromised deliverability

**Outer Member**  
for ease of deployment

**Thumb Wheel**  
for easy one-handed, controlled stent deployment

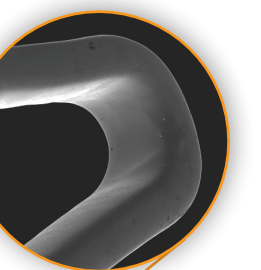
Now available in 120 mm and 150 mm lengths\*



\* Artwork shown not to scale.

## Absolute Stent

optimal surface for enhanced stent durability



**Low Tip Profile**  
for crossing tight lesions

