



The Plastic Whittler



Our Next Meeting:

Our next meeting will be on **Monday, February 18th at 6:30 pm**, at HobbyTown USA. Watch for Logan's Coupons! We'll wrap up around 8 PM and relocate to Logan's for dinner.

Be On Time if you can! Emanuel presented me with a thumb drive with hundreds of photos from our show! I'll bring a projector and we'll set up a slide show for all to see.

This Issue

Special thanks to Emanuel for again supplying the photos from our last meeting. Page 2 is a collection of photos of the models from our last meeting. It was a very well attended meeting with 17 members present. Two guests, Dan Thomas and Rob Lewis were present to learn a bit about modeling so they could introduce it as a Wednesday night family event at their church.



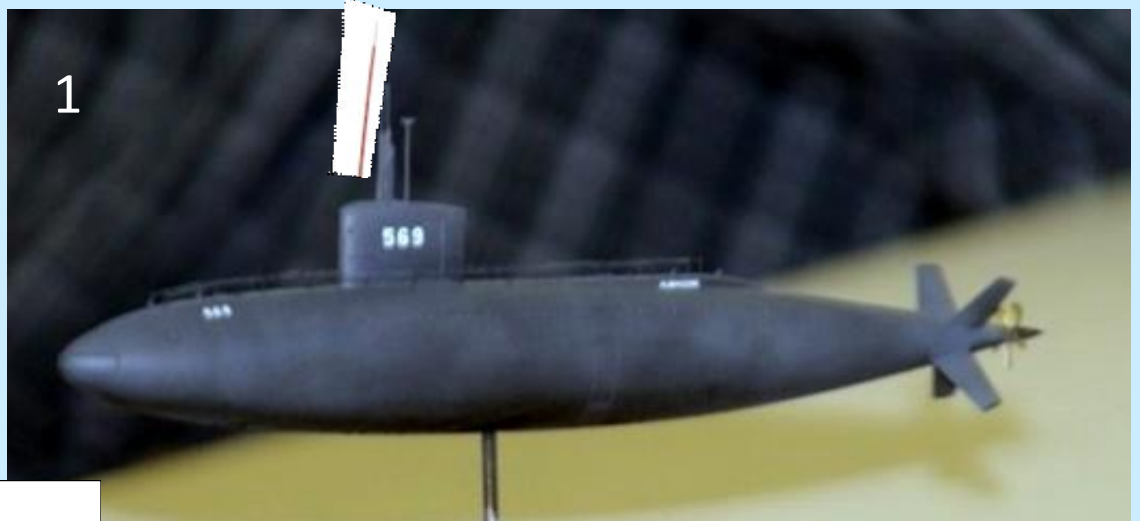
Lynn Petty - Chapter Contact
9018 Oak Haven Drive
Chattanooga, TN 37421
hlpetty@comcast.net

Mike Moore gave a rundown of things from our show in January. Final accounting was not completed but it appears we landed "in the black" which is always a good thing! There were 66 people registered at the show with 277 models not counting the Showcase models and a few others that were scattered about the show so we certainly topped 300! General admission was double that from last year and certainly contributed to the show's success. More elsewhere in this newsletter directly from Mike plus a small sampling of show photos..

UPCOMING EVENTS	DATE
Atlanta Model Figure Show	2/15-17/2013
IPMS/Marietta	3/9/2013
Cookeville Model Show	3/9/2013
Catawba Valley Scale Modelers Hickory NC	3/16/2013
Knoxville Model Show	3/23/2013
IPMS/Louisville	5/18/2013



Model	Builder
1. USS Albacore	Mike Moore
2. Mad Max Car	Everett Ford
3. Sea Harrier	Steve Lewis
4. ME-163	Lynn Petty



**Photos from
our last
meeting**



Message From Mike Moore on our show

ModelCon 2013

Well, our third show is in the bag. And it was a pretty good show if I do say so myself. We made just a bit of money, and everyone I've heard from has only had great things to say. As for stats, we were a little under on our registrations, and a little over on the model entries. It seemed like the photo category wasn't as popular as we may have hoped, but I was pretty happy with the response to the Showcase display.

All in all, it was, in my opinion, a great show that we can all be proud of. Thanks to everyone who pitched in and worked so hard!

Next year? We've got the same room booked again for the same weekend. The next goal will be to get a good flyer put together as soon as possible so we can really hit the spring shows hard with flyers.

One thing I think we may as well let die a natural death is the club build challenge thing. We really aren't supporting it much ourselves, and it really doesn't seem to be catching on with any other club except the Georgia Mountain Modelers. And congratulations to them by the way. Once again they did a great job and kicked our butts again.



The very popular Air Brush Demo!



**Photos from our
show - More at the
meeting**





E-mail Intelligence - Mike Moore

The following is an email chain that I was privy to recently. Names have been obscured to protect the GUILTY. It should be pretty self-explanatory...like we haven't all been there before

Submitted by...anonymous!

On Feb 3, 2013, at 10:52 AM, <mxxxxxxxxxxd@sxxxxxxxxl.nxt> wrote:

Hello Fxxxxxm Modelers,

Hope you get a chance to log some quality modeling time today, as well as some quality football and Superbowl commercial watching and obligatory junk food eating. I aspire to do all these things, plus grade some papers.

A few things:(a couple items redacted due to irrelevance) ...

1.

2.

3. I will type up the list of suggested topics for the monthly modeling discussion and send these out soon. My favorite suggestion was for Exv to teach a class on smuggling models into the house so that you wife doesn't know. Classic.

From: Sxxxx <[txxxxxxxg.sr@cxxxxxx.net](mailto:txxxxxxg.sr@cxxxxxx.net)>

To: Many addresses removed for their protection

Sent: Sunday, February 3, 2013 11:10 AM

Subject: Re: Follow Up on last Tuesday Night

I rarely interject.... So clearly this is important.... In my not at all humble opinion...

On the dilemma of kit hoarding and smuggling.

I have, in the last few years, set aside cabinet space in the garage. Although we have a garage fridge it is still Man World. The stash spot is high above normal reach and you have to want to get up there. The space is ideal for stashing kits cause the wife has no need/want to drag out a ladder to spy. It is also in plain sight so not too suspect. We are simple animals. Don't buy as often but buy quality and she will not notice the rare additions even if she did look. BTW, if you look in her closet one day and make the off-handed comment about how she should better store all the shoes (instead of piled on the floor) and perhaps help with some shelving, you can get away with multiple purchases on the sheer guilt factor alone. This works at least once a year, with slight mods of course.

Just say'n

Sent from my iPhone

From: Exxxn Exxxt <exxxxxxx@yxxxxo.com>

To: Many addresses removed for their protection

Sent: Sunday, February 3, 2013 5:21 PM

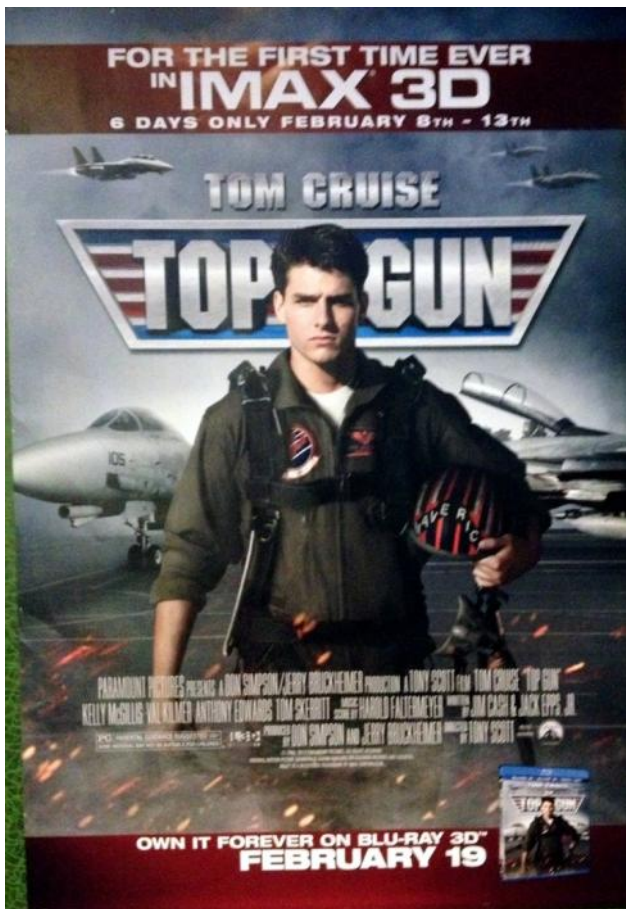
Subject: Re: Follow Up on last Tuesday Night

I don't know what anybody is referring to here. I only have about a dozen models stashed away. Two dozen at the most. Well maybe more, but not that many. I'm getting a bad rap, here. I'm not addicted to styrene, I can quit buying models any time I want. I just don't want to - it hasn't effected me getting to work and I've never had any brushes with the Law. So I bought that 1/32 scale Revell He-219 Uhu today. Knowing that my wife was going to be in church when I got home had nothing to do with it. I agree, Sxxx, unless we're all married to centipedes, the shoe 'chip' is an effective strategy...not that I need it, of course....

Not that I take any pleasure at all in the fact that my wife has arthritis and virtually no cartilage in her knees, but there is one positive side effect for me. As my stash/shop is in our attic, and her knees make stairs a hated chore for her, she rarely ventures upstairs. Which means all a model has to do is get up the stairs, and she is none the wiser.

In addition, not only is she a poor woman's Imelda, she is also an inveterate quilter. Multiply every model in my stash by 10, and you may get close to the number of yards of fabric stashed in our home. Not to mention the not one, not two, not three, not four, but FIVE sewing machines (well, Ok, four sewing machines and a serger, but really, how many folks know what a serger is?) in the house that make my two airbrushes pale in comparison.

All told, I really don't worry too much about my stash. Other than fire of course. With all the fabric to feed the flames, my stash will melt into a cloud of toxic smoke in a heartbeat!



It is amazing ot me that a movie almost 30 years old still can draw a crowd! Is it start power? Yes but the star is not Tom Cruise. The star of course was the F-14 Tomcat.....

Message From Brian Speer— R-3 Regional

Hey All!!

We are five weeks away from our contest. Once again, I'd like to invite all of you to attend the show. Also, we would appreciate some of you volunteering to help out (judging, model placement, etc.). We have a few vendor spaces left if you would like to participate in that area also.

Our raffle prizes are looking good too. We have a couple of Wing Nut Wings kits as part of the raffle.

We look forward to seeing you on March 9th. Bring your best work to enter and some cash to spend too!

More info at <http://ipms-atlanta.org/>, should you need it. Or, you can contact me directly.
Thanks,

Brian Speer

Chapter Contact

IPMS-Atlanta

770-963-6234

These guys supported our show so let's support them!

You'll find a copy of their Show Flyer elsewhere in the rag of a newsletter

-Lynn

And From Stan Stewart

http://www.youtube.com/watch_popup?v=gn1qMYfFrro&feature=related

Stan Stewart who was formerly a member of our club was able to attend our show in January. He shared this e-mail link to a webpage recently. If you haven't seen it please take a few minutes you'll find it worth a look. Thgis is a giant diorama of an airport in Germany that operates like a model train layout, complete with airliners taking off!



IPMS Canada introduces new e-newsletter

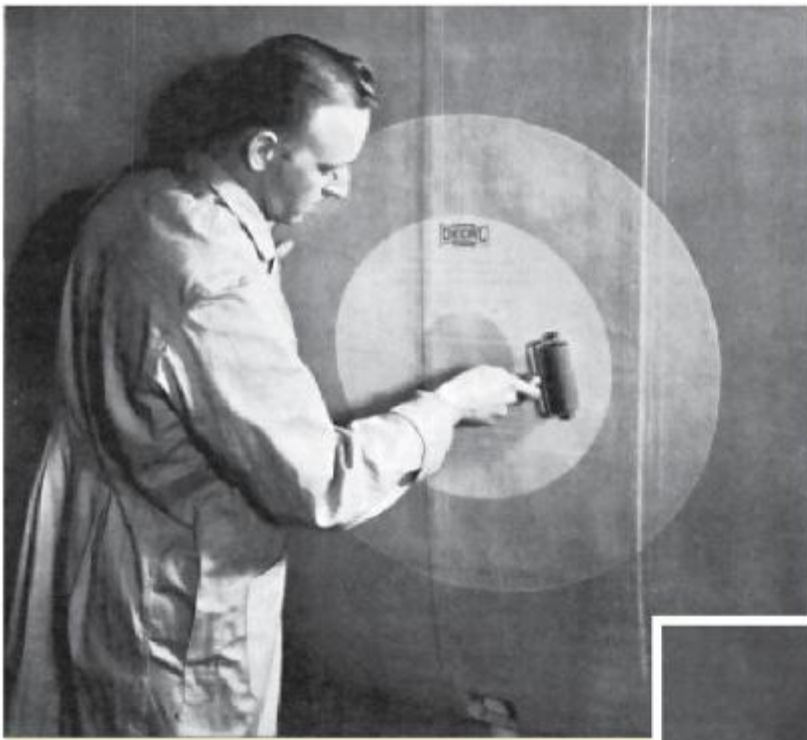
IPMS Canada has recently added an e-newsletter – titled *beave**RT**ales* – to the items our members receive. Our print publication, **RT**, continues to be distributed quarterly, and *beave**RT**ales* will be emailed to the members between **RT** issues. While **RT** contains larger, more in-depth modelling articles, *beave**RT**ales* will try to provide more information on member and local chapter activities, smaller modelling articles, contests, surveys, hints-n-tips, photo essays, and maybe a bit of humor. As it says, “If **RT** is about our models, *beave**RT**ales* is about us!”

Included in this email is a page from a recent *beave**RT**ales* which you may find interesting and amusing. Feel free to use it in your chapter newsletter if you like. It's low-res, being designed for computer displays, though it should also reproduce well in print. We hope you enjoy it, and we will be sending more 'Press Releases' in the future – complete with items of interest for you to use as you see fit.

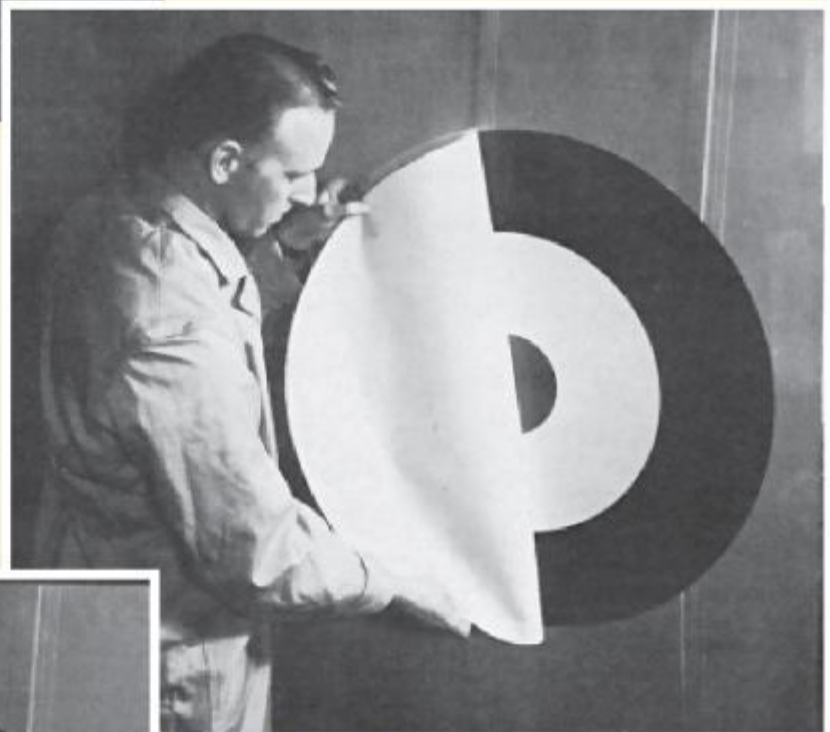
Bob Migliardi
National Director, IPMS Canada
www.ipmscanada.com

Applying decals ...1943 style

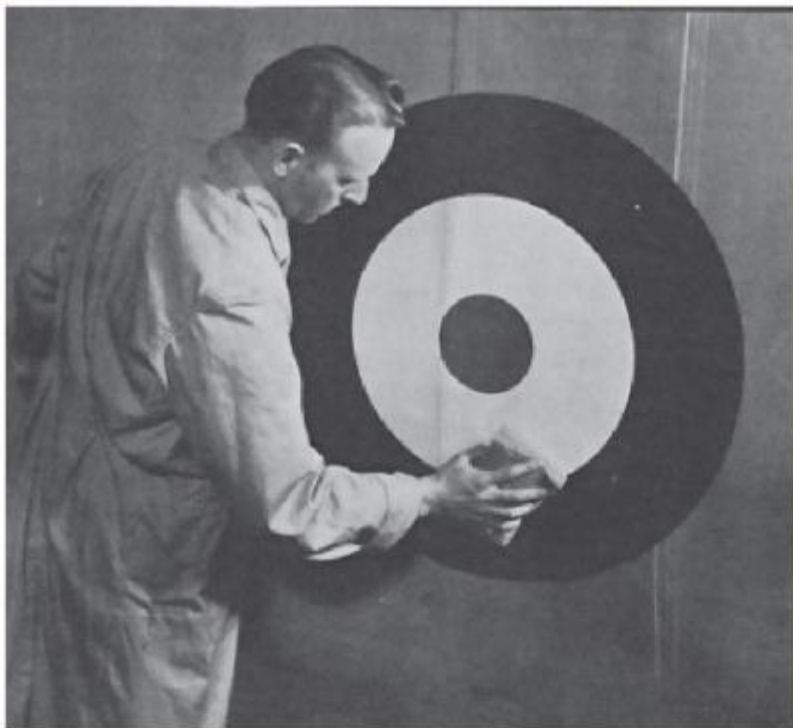
Not all wartime national insignia markings were applied with paint and stencils. Some were actually large pre-printed 'peel & stick' type decals. These photos from 1943 show a type A roundel being applied to a fabric covered wing. At left the workman rolls the decal down onto the wing surface.



Here the paper 'carrier' sheet is peeled off the decal now that it is adhered to the wing surface.



And here he smooths out the surface with a cloth to burnish the decal down better and to remove any air bubbles. I wonder if this guy ever built scale models!



This article is extracted from IPMS
Canada's new e-newsletter, *beaverTales*.
For more information visit
www.ipmecanada.com

The IPMS Canada inaugural *beaver Tales* “What the hell is that?” recognition quiz!

Below are some numbered pictures of...er... rather wierd aircraft. All you have to do is email us the list of your answers. Number them 1–20. The highest five scores (or first five to arrive, if there are ties) will win some **nice prizes**. So get going and send in your answers to box626@ipmscanada.com. The winners will be notified by email, and also announced in the next issue.

**Sorry... this IPMS Canada contest ended on Dec. 16, 2012, so there are no more prizes!...
But you can still have some fun with it!**



7



11



8



12



9



13



10



No, no, no... not the Martian flying machine!
What was the aircraft that dropped the atomic
bomb on the Martians in the 1953 movie, *War
of the Worlds*?



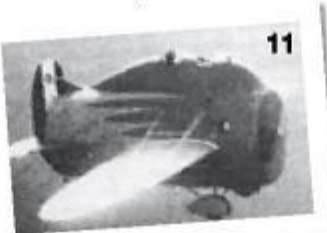
This quiz was part of the November 2012 *beaverTales*, the e-newsletter supplement of IPMS Canada. For more info on IPMS Canada visit our website at www.ipmscanada.com



The IPMS Canada "What the hell is that?" recognition quiz answers.



What was the aircraft that dropped the atomic bomb on the Martians in the 1953 movie, *War of the Worlds*?



- 1 - Douglas B-23 Dragon
- 2 - Canadair CL-84
- 3 - Transavia Skytruck
- 4 - Edgley Optica
- 5 - Republic XF-84 Thunderscreech
- 6 - Republic XF-91 Thunderceptor
- 7 - Hindustan Aeronautics Ltd. HF-24 Marut
- 8 - Caproni Ca-60 Hydro Noviplano
- 9 - Kalinin K-7
- 10 - Northrop YB-49 Flying Wing

- 11 - Caproni Stipa
- 12 - Supermarine (or PB) Nighthawk
- 13 - Gregor FDB-1
- 14 - Rutan Boomerang
- 15 - GAL 38 Fleet Shadower
- 16 - FMA IAe Pulqui II
- 17 - VEF Irbitis I-16
- 18 - A.D. Scout (aka Sparrow)
- 19 - Fleet 50 Freighter
- 20 - North American B-45 Tornado

JaxCon 2013 - Mike Moore

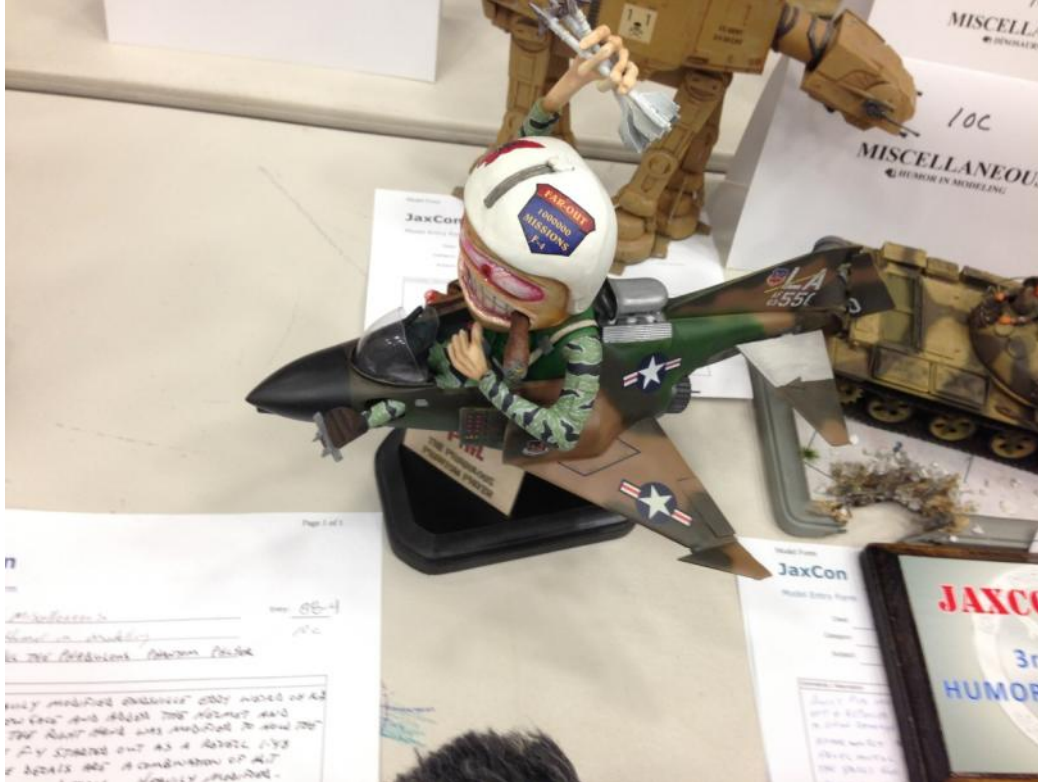
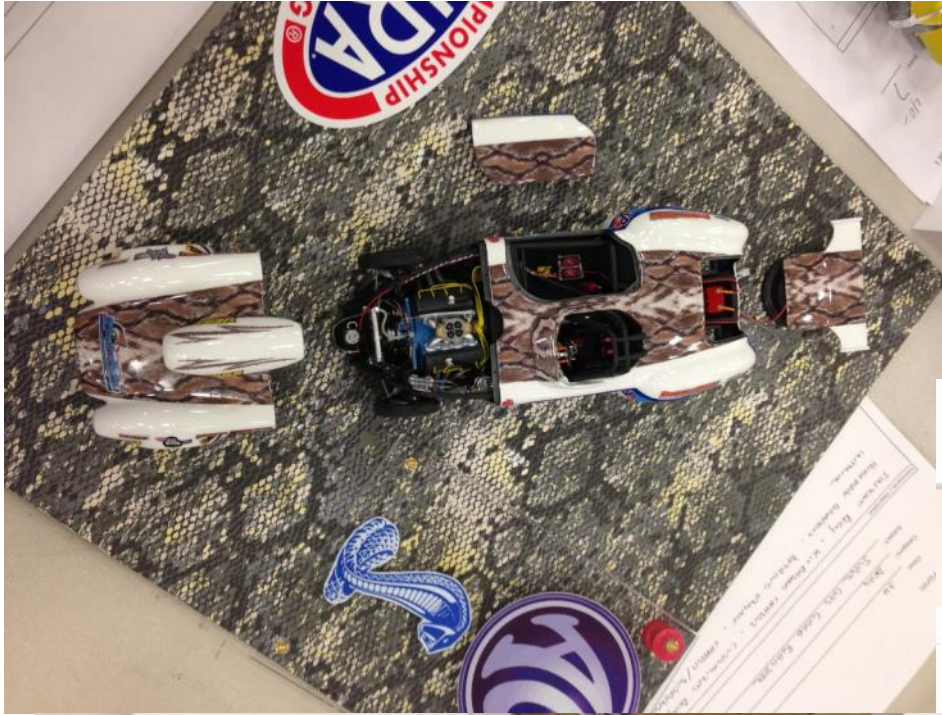
JaxCon 2013

Tom and I loaded up on and made the trip to Jacksonville. Ben was on the passenger manifest as well, but events conspired against him, so it ended up a two way split on gas and hotel. The drive down wasn't bad, and I didn't even really get lost. The vending, at least for the two of us was pretty lackluster. Neither one of us sold too much, and neither one of us bought anything (an absolute first for me). The show though was pretty impressive. There were more than 100 entrants and 533 models entered, and a lot of them were really nice.

How did we do? I'd have to say we upheld the honor of the Chattanooga Scale Modelers pretty well indeed. We both brought home multiple first places, and Tom added a couple best of awards as well. But the icing on the cake was the Judges Best in Show. Yup, Mr. Gaston (pronounced with a French inflection throughout the awards presentation) will shortly receive the Judges Best in Show award for his BA-65 Combat Car. You know, the whacked out scratch built kit bash he did with an old Monogram Fw 190 and a bunch of other stuff. And I can proudly say that the voting wasn't EVEN close. He won in a landslide! Congrats to Tom!

And a few pictures...





This started life as a 1/48 scale Monogram Phantom! Pilot is scratch built.

#2 in the Tools I can't Live Without Series - Mike Moore



Swann Morton knives...

I've read about these for years. Swann Morton is a British scalpel maker, originally only making surgical scalpels. I don't know when, but sometime in the past, they started to market a "craft" line of blades. Near as I can tell, the blades themselves are the same as the surgical blades, just not sterile. What's that mean? They are SHARP! Really SHARP. I mean REALLY SHARP. WAY SHARPER THAN XACTO blades. Yeah, go ahead and ask me how I know! But for some reason, they are also more durable than Exacto blades. They hold their edge better. The points hold up better. How many times have you had the point of a #11 Xacto blade break off. Me, happens all the time. I haven't broken one of these off yet.

Another couple of benefits. The handles ain't round. So they don't roll around and off your bench. The blades don't fit into a twist to tighten collet. So they don't get loose on you at in-opportune times.

(disclaimer...they do make Xacto style blades and handles, but why bother...)

They are also so sharp, that when brand new, you hardly feel them when they break the skin...

On the down side, you can't exactly run down to Hobby Lobby, Hobby Town, Michaels, or any of the other local outlets for blades. I got mine from Cincinnati Surgical...

<http://www.cincinnati-surgical.com/arts.lasso>

Another down side. The way the blades slot onto the handles makes them a little tricky to mount them and take them off the handles. Ask me how I know.

All in all, the Swann Morton scalpel style blades and handles are a definite upgrade from Xacto knives.



IPMS/USA
By Modelers For Modelers

International Plastic Modelers' Society - USA Branch

Congratulations, your Chapter has successfully completed the re-charter process for 2013. By renewing your Charter with IPMS, you commit yourselves to promote this great hobby of ours and IPMS/USA as a whole.

Attached is your 2013 Charter sticker. Please attach it to your Charter certificate. If your certificate is full, please contact me at dlc@ipmsusa.org for another one.

Don't forget that you have many opportunities to promote the hobby. A display/demo at the local mall, air show, airport, museum, etc. will increase your footprint in the local area. To help improve your demo/display, you may contact IPMS for free Make-N-Take supplies, just fill out the form at <http://www.ipmsusa.org/MakeNtake/Make-N-Take.htm>

If you want to "give back", then your chapter can make donations to the Support-The-Troops and/or the Make-N-Take programs, both are worthwhile programs that IPMS/USA is heavily involved in. For more information on how to donate, please contact MJ at the home office, mi@ipmsusa.org. MJ is also your source for advertizing materials, such as flyers, copies of The Journal, etc.

Larry Randel

#25884

IPMS/USA - Director of Local Chapters





Regional Model Show 2013

Atlanta Chapter of the International Plastic Modeler's Society



Atlanta Chapter IPMS



Will be hosting a Regional Show

Saturday, March 9, 2013

9:00 a.m. – 4:00 p.m.



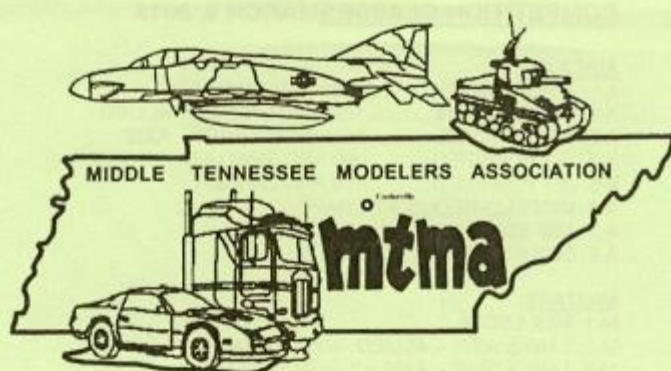
Lockheed Martin Local Lodge 709

Union Hall

1032 South Marietta Parkway

Marietta, GA 30060

For additional information go to: <http://ipms-atlanta.org/>



38 CLASSES

29TH ANNUAL MIDDLE TENNESSEE MODELERS ASSOCIATION SCALE MODEL SHOW AND CONTEST

CO-SPONSORED BY
TENNESSEE TECHNOLOGICAL UNIVERSITY & THE SCHOOL OF HUMAN ECOLOGY

SATURDAY MARCH 9, 2013
9 AM TO 4 PM

TENNESSEE TECH ROADEN UNIVERSITY CENTER
MULTIPURPOSE ROOM
1000 NORTH DIXIE AVE.
COOKEVILLE, TENNESSEE 38505

FREE ADMISSION

SWAP MEET

CONTEST ENTRY FEE

\$6.00 FIRST MODEL ENTERED - \$1.00 EACH ADDITIONAL MODEL ENTERED
"FREE" TO AGES 15 AND UNDER
REVELL-MONOGRAM MAKE 'N TAKE EVENT FOR THE YOUTH

FOR MORE SHOW INFORMATION CALL:

GLENN RICE (931) 432-4513 AFTER 6 PM CST OR RANDALL COOPER (931) 456-9803
VENDOR TABLE RESERVATIONS CONTACT GLENN RICE

EMAIL: mtmacookeville@yahoo.com

NO COLLECT PHONE CALLS PLEASE!

VENDOR TABLES \$25.00 (10 FOOT LONG) BEFORE FEB. 15, AFTER THAT DATE TABLES ARE \$45.00 MTMA, TENN TECH,
NOR ANY PERSON ASSOCIATED WITH EITHER ORGANIZATION NOT RESPONSIBLE FOR INJURY, PROPERTY LOSS OR DAMAGE.

DIRECTIONS TO SHOW: INTERSTATE 40 - EXIT 286 - HEAD NORTH ON WILLOW AVENUE.
GO APPROXIMATELY 3 MILES TO UNIVERSITY DRIVE. TURN RIGHT AND GO TO END OF STREET.
SHOW IS ON THE SECOND FLOOR OF THE UNIVERSITY CENTER.

SCHEDULE OF EVENTS

- 7:00 AM VENDOR SET UP
8:00 AM CONTEST REGISTRATION BEGINS
SHOW OPENS TO GENERAL PUBLIC
12:00 NOON REGISTRATION CLOSES!!!
12:01 PM JUDGES MEETING
12:16 PM JUDGING BEGINS. CONTEST AREA CLOSED FOR JUDGING
Please leave models on tables until after awards ceremony.
12:30 PM RAFFLE
3:30 PM (or earlier if possible) AWARDS PRESENTATIONS.

REVELL-MONOGRAM MAKE 'N TAKE EVENT FOR THE YOUTH

COMPETITION GUIDELINES

1. THIS CONTEST IS STRICTLY FOR STATIC SCALE MODELS CONSTRUCTED FROM UNASSEMBLED - UNFINISHED COMMERCIAL PLASTIC, RESIN, OR METAL KITS. SCRATCH-BUILT MODELS ARE WELCOME. PRE-ASSEMBLED AND PRE-FINISHED MODELS, TOYS, OR REPLICAS OF ANY KIND ARE NOT ELIGIBLE FOR AWARDS.
2. COMPETITION CLASSES ARE OPEN TO THE PUBLIC. PAST WINNING MODELS FROM PREVIOUS MTMA SHOWS ARE NOT PERMITTED TO ENTER THE COMPETITION. THEY MAY BE DISPLAYED ONLY!
3. MODELS MUST BE ENTERED UNDER THE NAME OF THE BUILDER. "GHOST" ENTRIES ARE CHARGED STANDARD ENTRY FEES TO THE PERSON ENTERING THEM. ENTRANTS MUST COMPLETE REGISTRATION BEFORE ENTERING THE SHOW.
4. SHOW OFFICIALS WILL ASSIST THE ENTRANT IN DETERMINING EACH ENTRIES CLASS. OUR INTENT IS TO GROUP MODELS OF SIMILAR SIZE, CONFIGURATION, & DETAILING; AND THIS IS THE CRITERION USED TO CLASS SUBJECTS OF ODD SCALE OR SUBJECT.
5. TEAMS OF EXPERIENCED JUDGES EVALUATE THE ENTRIES FOR SKILL, ACCURACY, AND OVERALL REALISM. MODELS SHOULD EXHIBIT BASIC MODEL BUILDING SKILLS. POOR CRAFTSMANSHIP IS NOT REWARDED. NO ONE JUDGES A CLASS HE/SHE IS ENTERED. ALL DECISIONS OF THE JUDGES ARE FINAL.
6. ALL MODELS SHOULD BE WELL ENOUGH ASSEMBLED TO STAY TOGETHER DURING THE HANDLING AND JUDGING. THE MTMA, TENNESSEE TECH, AND THE JUDGES ASSUMES NO LIABILITY IN THE EVENT DUE TO DAMAGE, FIRE, THEFT, OR PERSONAL INJURY.
7. JUDGES MAY MOVE MODELS, SUBDIVIDE, OR COMBINE CLASSES AT THEIR DISCRETION TO INSURE FAIR COMPETITION. FOUR (4) MODELS CONSTITUTE A CLASS FOR AWARDS.
8. JUDGES AWARD 1ST, 2ND, & 3RD IN EACH CLASS. ADDITIONAL RECOGNITION AWARDS AT THEIR DISCRETION. THE NO SWEEP RULE WILL BE USED. ONE TROPHY PER CONTESTANT PER CLASS.
9. THE MTMA JUDGES WILL DETERMINE "BEST OF" AWARDS.
10. INTERMEDIATE CLASSES ARE FOR YOUTH AGE 12 TO 15. THE JUNIOR CLASS IS FOR YOUTH AGE 11 AND UNDER.
11. DIORAMAS ARE MODELS DISPLAYED TO DEPICT A REALISTIC SCENE OR EVENT.
12. BASES, TERRAIN, FIGURES & EQUIPMENT MAY BE USED WITH A SINGLE MODEL IF NOT OTHERWISE MEETING THE CRITERIA FOR DIORAMAS. JUDGES WILL HAVE THE FINAL SAY ON CLASSIFICATION.
13. MODELERS MUST FILL OUT THE ENRTY FORM COMPLETELY AND SHOULD DOCUMENT SPECIAL FEATURES, HANDLING PRECAUTIONS, CORRECTIONS, ADDED DETAILS & UNUSAL MARKINGS AS WELL AS POSSIBLE
14. ALL ENTRANTS NEED TO HAVE THEIR MODELS PICKED UP BY 5:00 PM OR JUST FOLLOWING THE AWARDS. THE MTMA WILL NOT BE RESPONSIBLE FOR ANY MODELS NOT PICKED UP.
15. ANYTHING NOT COVERED IN THE GUIDELINES WILL BE DISCUSSED BY THE MTMA. THEN A DECISION WILL BE MADE ON THE SUBJECT IN QUESTION.
16. ALL TURN TABLES MUST BE TURNED OFF AT JUDGING.

COMPETITION CLASSES MARCH 9, 2013

AIRCRAFT

- A-1. PROP-DRIVEN.....1/60 AND SMALLER
A-2. PROP-DRIVEN.....1/59 AND LARGER - **ALLIED**
A-3. PROP-DRIVEN.....1/59 AND LARGER - **AXIS**
A-4. JET POWERED.....1/60 AND SMALLER
A-5. JET POWERED.....1/59 AND LARGER
A-6. MISCELLANEOUS AIRCRAFT
A-7. 1/32 SCALE
A-8. BOX STOCK

MILITARY

- M-1. BOX STOCK
M-2. TANKS WWII - **ALLIED** - 1/35TH SCALE
M-3. TANKS WWII - **AXIS** - 1/35TH SCALE
M-4. TANKS - OTHER NON WWII
M-5. OTHER - APC, HALFTRACKS, AFV, SOFTSKINS, ETC.

AUTO & TRUCK

- AT-1. FACTORY STOCK (SHOWROOM)
AT-2. BOX STOCK
AT-3. STREET ROD - PRE '48
AT-4. STREET MACHINE - POST '49
AT-5. COMPETITION - STRAIGHTLINE
AT-6. COMPETITION - CLOSED WHEEL
AT-7. COMPETITION - NASCAR
AT-8. CUSTOMS
AT-9. CURBSIDE
AT-10. RAT RODS & PRIMER
AT-11. TRUCKS - 10,000 LBS. & OVER (ALL TYPES)
AT-12. TRUCKS - 9,999 LBS. & UNDER & LIGHT COMMERCIAL
AT-13. SHORT TRACK RACE CAR - OPEN WHEEL
AT-14. SHORT TRACK RACE CAR - CLOSED WHEEL

MISCELLANEOUS

- MIS-1. SCIENCE FICTION
MIS-2. LADIES ONLY
MIS-3. FIGURES - 69MM & SMALLER
MIS-4. FIGURES - 70MM & LARGER
MIS-5. ETCETRA - INCLUDES MISC. DIORAMAS
MIS-6. WATERCRAFT - SUBMARINE
MIS-7. WATERCRAFT - SURFACE

INTERMEDIATE - AGE 12 TO 15
IN. - ALL ENTRIES

JUNIORS - AGE 11 & UNDER
JUN. - ALL ENTRIES

SPECIAL AWARDS

- BEST AIRCRAFT
- BEST MILITARY
- BEST AUTO-TRUCK
- BEST MISCELLANEOUS
- BEST YOUTH MODEL
- BEST WORLD WAR TWO D-DAY AIRCRAFT

CLUB ONLY

- C-1 MILITARY, ETC.
C-2 AUTOMOTIVE

PEOPLE'S CHOICE, VOTED ON BY CONTESTANTS ONLY.
NOT ELIGIBLE FOR ANY "BEST OF SHOW" AWARD!

2013
IPMS/Louisville
Invitational
Contest



May 18, 2013
9 a.m. to 3:30 p.m.

3821 Hunsinger Ln,
Louisville, KY
40220

The Battle of Kursk

70th Anniversary

Entry fee: \$10(\$8 for IPMS/USA members with card) which includes the first two models, \$1 per model after the second.
Juniors: (under 18) Flat \$5. General admission: \$2

Show Contact information:
Dr. Terry Hill
thill35434@aol.com
502-544-6383

www.MMCL.org

Category Number	Category		
Aircraft			
100	Biplanes 1/72 and smaller	403	Speed Boats, Motor Torpedo and Patrol Boats (All Entries)
100.1	Biplanes 1/71 to 1/48	404	Conversions and Scratch-Built (All Entries)
100.2	Biplanes 1/47 and larger		
101	Prop Aircraft 1/72 and Smaller	Automotive	
101.1	Prop Aircraft 1/71 to 1/48	500	Factory Stock/Production Vehicles (All Entries)
101.2	Prop Aircraft 1/47 and Larger	501	Street Rod and Street Machines (All Entries)
102	Jet Aircraft 1/72 and Smaller	502	Customs (All Entries)
102.1	Jet Aircraft 1/71 to 1/48th	503	Competition (All Entries)
102.2	Jet Aircraft 1/47th and Larger	504	Trucks (All Entries)
103	Rotary Wing, All Scales	505	Motorcycles (All Entries)
104	Civil, Sport, Racing, Unmanned, and Airships, All Scales		
105	Airliners, All Scales	Space and Sci-fi	
106	UAVs, Missiles, etc.	600	Real Space, Missiles and Vehicles
107	Vacuum Formed, Scratch, Conversions, All Scales	601	Science Fiction and Fantasy Vehicles
Armor			
200	Military Vehicles (Small Scale) 1/72 and smaller, All Types	Dioramas	
201	AFV (Through 1945), 1/48th and Larger	700	Figure Vignette (5 figs or less, no vehicles)
201.1	AFV (Post 1945), 1/48th and Larger	701	Diorama, Small Composition
202	Armored Cars and 1/2 Tracks, 1/48th and Larger	702	Diorama, Large Composition
203	Soft Skin Vehicles (Tracked/Wheeled), 1/48th and Larger	703	Automotive, Sci-Fi, and Miscellaneous
204	Towed Artillery, 1/48th and Larger		
205	Conversions, All Scales	Miscellaneous	
206	Scratchbuilt, All Scales	800	All Entries
Figures			
300	Dismounted and Mounted (all Era) 53mm-	Juniors (Under 16)	
301	Dismounted, 54mm to 70mm	0.1	Aircraft
301.1	Dismounted, 71mm and Larger	0.2	Military Vehicles
302	Mounted, 54mm to 70mm	0.3	Figures
302.1	Mounted, 71mm and Larger	0.4	Ships
303	Conversion and Scratchbuilt (All Scales)	0.5	Automotive
304	Fantasy and Sci-Fi (All Scales)	0.6	Diorama
305	Busts (All Entries)	0.7	Miscellaneous
Ships			
400	Powered Surface Ships 1/401 and Smaller	<p>PLEASE NOTE: Categories above will be split as necessary. It is anticipated that splits will occur. MMCL reserves the right to consolidate or split categories as the contest head judge sees fit. All decisions regarding splits and consolidates are final. Our contest allows sweeps. (i.e. a person may win more than one award per category with multiple entries in that category)</p>	
400.1	Powered Surface Vessels 1/400 and Larger		
401	Sailing (All Scales and Eras)		
402	Submarines 1/401 and Smaller		
402.1	Submarines 1/400 and Larger		