



THE HOLLYWOOD LOOK step-by-step

FACE

Foundation:

Apply your preferred shade of [Perfecta Base Foundation](#) to the entire face in a circular motion. Tip: Add [Perfect Moisture Serum](#) for more hydration.

Brush: [Kabuki Brush #17](#)

Concealer:

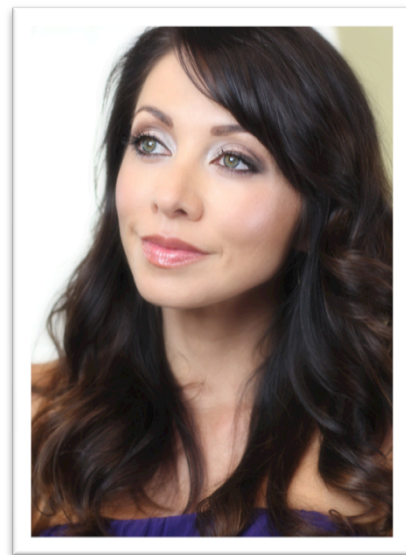
Apply your preferred shade of [Concealer](#) to brighten the under eye area.

Brush: [Concealer Brush #3](#)

Setting the Foundation:

Apply [High Definition Loose Powder](#) to the entire face to set in the foundation and remove shine. This powder is ideal for a camera-ready look.

Brush: [Luxe Blush Brush #2B](#)



Contouring:

Lightly apply [Mineral Base Compact](#), shade BR-3, to define the cheekbones.

Brush: [Cheek Contour Brush #2](#)

For a Hollywood Glow:

Lightly apply [Shimmer Powder](#), shade Inca, to the cheekbones adding a bronzing glow.

Brush: [Cheek Contour Brush #2](#)

EYES

Brows:

Using light upward strokes and a sharpened pencil, apply your preferred [Eye Brow Pencil](#) shade to shape and fill the eyebrows. Apply our [Clear Mascara](#) over your eyebrows to hold their shape.

Eyelid Shade:

Beginning at the inner corner, apply [Thera](#) over ¾ of lower lid.

Brush: [Eye Shadow Brush #5](#)

Eyelid Shade:

Apply [Beverly Hills](#) to the outer 1/2 corner of the eyelid with the #5 brush and then blend with the #15 brush to soften.

Brushes: [Eye Shadow Brush #5](#) and [Crease Blender Brush #15](#)

Crease Shade:

Apply [Malta](#) into the crease of the eye and blend.

Brush: [Fine Smudger Brush #20](#)

Crease Shade:

Lightly apply [Havana](#) into the crease using just the tip of the #20 brush.

Brush: [Fine Smudger Brush #20](#)

Eye Pencil Shade:

Apply [Black Eye Pencil](#) to line the upper lashes and into the waterline.

Eye Liner Shade:

Apply [Shanghai](#) along the upper and lower lid smudging lightly for a smoky look.

Brush: [Small Angle Brush #11](#)

Mascara:

Curl lashes and apply [Lash Thickener](#) and two coats of [Jet Regular Mascara](#).

Tools: Lash Curler

LIPS

Lip Liner Shade:

Apply [Dune](#) Lip Pencil to lightly define the lip. Diffuse the pencil line with the #6 lip brush.

Brush: [Covered Lip Brush #6](#)

Lipstick Shade:

Apply [Odyssey](#) Lipstick to the upper and lower lip using the #6 lip brush.

Brush: [Covered Lip Brush #6](#)

Lip Gloss Shade:

Apply [Aurora](#) Lip Gloss over the Lipstick using the #6 lip brush.

Brush: [Covered Lip Brush #6](#)

CHEEKS

Blush Shades:

First, apply [Bal Harbour](#) to the top of the cheekbone to highlight.

Next, lightly apply [Orleans](#) to the apple of the cheek for color.

Brush: [Cheek Contour Brush #2](#)