



With the Tracer IV location identification system, locating personnel and equipment has never been easier

- Real-time display allows you to locate staff members quickly and easily.
- Provides hands-free staff registration, automatically cancelling non-emergency calls.
- Gather important information for your total quality program. Team Tracer with Responder IV's Management Software and you get important call response information that will assist you when making staffing decisions.

Tracer™ IV Equipment and Staff Locating: *A Revolutionary Advance In Patient-Focused Hospital Communications*

One of the biggest obstacles for hospital personnel is finding other staff members quickly, without disturbing patients. Traditionally, there were two ways to find people. One was to walk from room to room and look for them, which wasted valuable time. The other was to page for them, which disturbed patients. Now there is a third — and better — option: the integrated Responder IV/Tracer™ IV system from Rauland-Borg Corporation, the leader in health care communications.

The Responder IV touchscreen console revolutionized hospital communications by giving nurses a fast and flexible way to communicate without disturbing patients. Now, with the com-

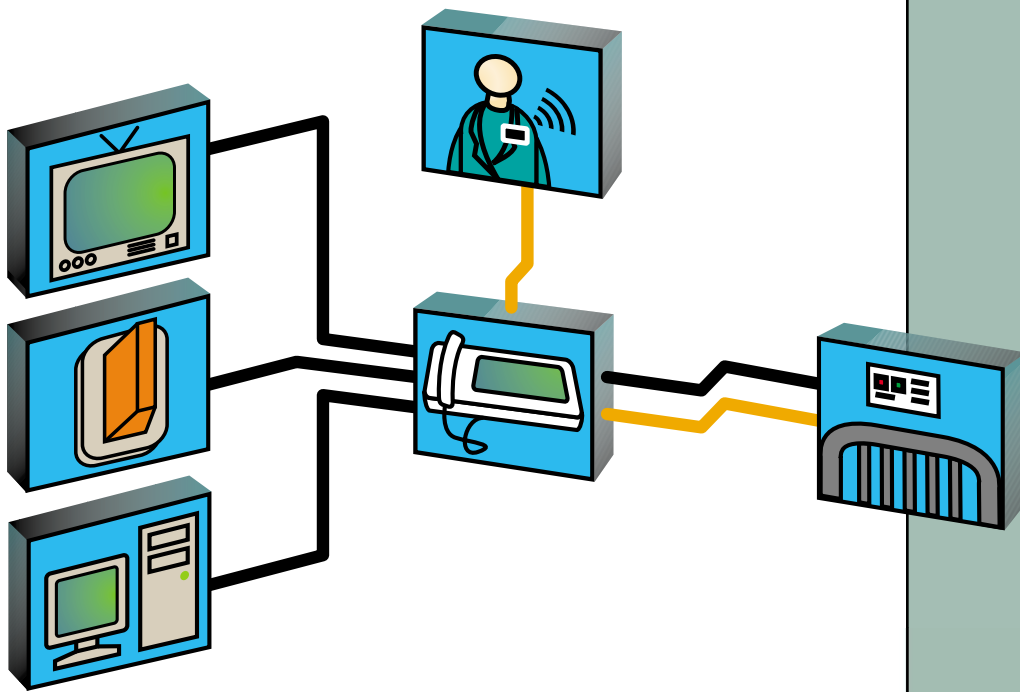
bined power of Tracer, Responder IV allows hospital personnel to quickly, easily, and quietly identify where a particular staff member is and target communications to just that room.

The Tracer uses a small lightweight transmitter that clips on to a shirt or jacket, much like a badge. Once a staff member has logged on to the system and attaches the transmitter, the system is able to locate the staff member until he or she logs off. When a staff member enters the room of a patient who has called for help, the system automatically cancels any non-emergency calls and registers the staff member in the room.

Other nurse call/locator devices typically require multistep procedures that can be confusing and/or time consuming. With Responder IV, all it takes is three easy steps and a staff member is ready to begin his or her shift. The staff members simply tell the system who they are, what rooms they've been assigned to, and what tag they are wearing.

And because Responder IV and Tracer work off of the same hospital-wide network (a feature unique to Responder IV/Tracer), staff members only have to enter their information one time, even if they work on more than one floor. And in a critical situation, knowing where key staff members are is immensely important.

Tracer™ IV Infrared Locating



Locate and Communicate with Caregivers

- Realtime display
- Indication in corridor of staff location
- Remote cancel
- Document response with management software

Features

- Fast, accurate, quiet staff location that allows you to target communications to a specific room without overhead paging.
- Small, lightweight tags are easy to use and unobtrusive.
- Three easy steps and a staff member is ready to begin his or her shift.
- Takes advantage of Responder's network approach. Nurses only have to enter their information one time, even if they work on more than one floor.



Rauland-Borg Corporation • 3450 West Oakton Street • Skokie, Illinois 60076-2958
VOICE: (847) 679-0900 • **TOLL-FREE:** (800) 752-7725 • **FAX:** (847) 679-0625
WEB: www.rauland.com



Rauland-Borg (Canada) Inc. • 4025 Sladeview Crescent, Units 4-6
Mississauga, Ontario L5L 5Y1
VOICE: (905) 607-2335 • **FAX:** (905) 607-3554
WEB: www.rauland-canada.com

