

# AfrikaAfrika

## SERENGETI MARA CAMP

### FACT SHEET

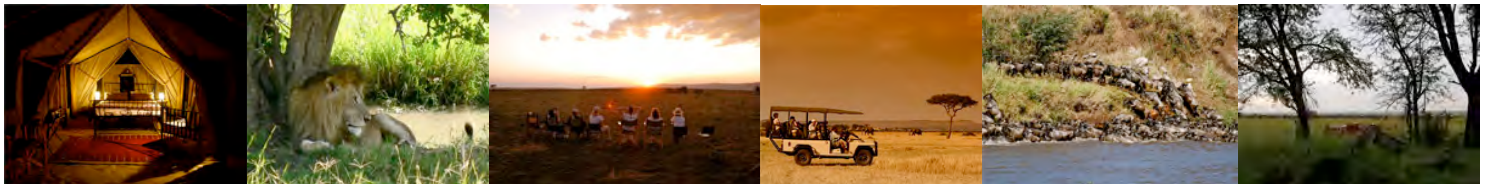
#### INTRODUCTION

*Uniquely situated in the northern reaches of the Serengeti National Park, and with unrivalled access to the short grass plains adjacent to the Maasai Mara National Reserve, sits the Lamai Wedge. This slice of Africa has just one camp: The Serengeti Mara Camp. Here AfrikaAfrika offers a tailor made, private wildlife experience in one of the last true wilderness areas of Africa. The area is quiet and peaceful, with abundant game, and no people. Our small, discreet, classic mobile camp operates in a socially and environmentally responsible way, placing a minimal human footprint. It is our vision to see African natural environments protected and local communities develop through good stewardship and revenues generated by responsible tourism.*

*The Northern Serengeti is renowned for its sheer size, primeval landscapes and large populations of plains game that seasonally migrate to follow the nutritious pastures. It has become famous for the migration of millions of wildebeest and the viewing of dramatic river crossings, which on occasion occur close to our camp. The sheer density of wildlife makes it also a predator haven with frequent sightings of lion, leopard and cheetah.*

*Resident game is prolific even when the migration is not present, making the Lamai Wedge a year round destination, like the Maasai Mara. Year-round birding is superb. The stark beauty of the western escarpment and the open short grass plains provides a great backdrop to wildlife viewing.*

*Sitting amidst this ancient and sacred land between two of conservation's great success stories, Serengeti Mara provides an exclusive mobile camp experience - quiet, beautiful, remote. Sights, smells and sounds remind you that this is a slice of paradise on earth. But the most magical moment at Serengeti Mara Camp might just be witnessing the sunrises from the little outdoor seating area in front of your tent. Here Africa will remind you that this is the land that will always attract those who still dream.*




#### OVERVIEW

<b>Quick overview</b>	<p>An exclusive mobile camp in the Lamai Wedge area of the far northern Serengeti National Park, Tanzania. Offering a tailor made, private wildlife experience in one of the last true wilderness areas of Africa, we are the only camp on the northern side of the Mara River.</p> <p>Accessed by light aircraft to Kogatende airstrip within the National Park, our small, discreet classic luxury mobile camp operates in a socially and environmentally responsible way, placing a minimal human footprint. It is our vision to see African natural environments protected and local communities develop through good stewardship and revenues generated by responsible tourism.</p> <p><i>Serengeti Mara</i> offers six (7) double large walk-in tents, with en suite bathrooms.</p> <p>Activities include game drives within Serengeti National Park.</p>
-----------------------	---

#### LOCATION

<b>General</b>	<ul style="list-style-type: none"> <li>• The camp is in the Serengeti National Park, Tanzania - Mihingu Area of Lamai Wedge, North West of Kogatende Airstrip.</li> <li>• This area borders the Maasai Mara ecosystem and is similar in nature.</li> <li>• North of Mara River and 14km from Kogatende Airstrip.</li> </ul>
<b>Geography</b>	<ul style="list-style-type: none"> <li>• This northern section of the Serengeti National Park is literally unexplored and far away from the busy southern sections of the park.</li> </ul>

<p><b>Getting there</b></p>	<ul style="list-style-type: none"> <li>• Most of our guests arrive with a 2-hour (time varies depending on route) scheduled flight from Arusha into Kogatende airstrip with airlines such as Coastal Aviation, Tanganyika Flying Company or Regional Air.</li> <li>• Chartered flights are also available for this route.</li> <li>• At Kogatende airstrip guests will be greeted and transferred to camp in a game-viewing vehicle. The vehicle will cross the Mara River and progress to camp taking time to view any game spotted along the way. Depending on the animals seen the transfer may take about an hour.</li> </ul>
<p><b>GPS coordinates</b></p>	<ul style="list-style-type: none"> <li>• 1 degrees south, 31 minutes, 06.11 seconds</li> <li>• 34 degrees east, 48 minutes, 43.33 seconds</li> </ul>
<p><b>Map</b></p>	 <p>Map courtesy of Expert Africa</p>

**ACCOMMODATION**

<p><b>Overview</b></p>	<ul style="list-style-type: none"> <li>• Seven (7) guest tents – two (2) are positioned so that they share a large living room area - twin or double bed configurations possible for all tents.</li> <li>• One (1) twin guide tent for private guides.</li> <li>• Camp can accommodate 14 guests with 2 private guides.</li> </ul>
<p><b>Details</b></p>	<ul style="list-style-type: none"> <li>• En suite bathroom with an internal flushing toilet.</li> <li>• Outdoor bucket hot water shower under the stars.</li> <li>• Large canvas tents set on the ground.</li> <li>• Spacious veranda in front of each tent.</li> <li>• Lighting powered by solar power.</li> <li>• There is a charge point for a few electronic devices in each tent.</li> <li>• Soap, shampoo and lotion supplied in each tent.</li> <li>• For security each tent offers a lockable trunk.</li> <li>• Free laundry service, depending on weather should be returned to you within 24 hours.</li> </ul>

## CAMP

<b>Overview</b>	<ul style="list-style-type: none"><li>• Camp situated in acacia grove trees on Mihingu hill looking onto a quintessential East African panorama.</li><li>• Dining and lounge area in one large pavilion tent.</li><li>• Fire pit and sitting/dining area overlooking short grass plains.</li><li>• Picnics on drives offered allowing for all day excursions.</li></ul>
<b>Electricity &amp; Water</b>	<ul style="list-style-type: none"><li>• Camp is run by solar power.</li><li>• Lighting in guest accommodation is solar power.</li><li>• Charging station available in each accommodation tent and in the pavilion tent.</li><li>• Drinking water is bottled.</li><li>• Shower, toilet and laundry water is river water and hand delivered to the tents.</li><li>• Water is scarce so conservation is an important consideration year round.</li></ul>
<b>Drinks</b>	<ul style="list-style-type: none"><li>• All drinks are included in the accommodation rate.</li></ul>
<b>Communication</b>	<ul style="list-style-type: none"><li>• Cellular phone signals are received from all major networks within lodge area. So not to intrude on other guests' privacy, guests are requested to please observe following courtesies: Please ensure the ring tone is kept at a low volume to avoid disturbing other guests. Please use phone in the privacy of the tent and not any of the common areas: main pavilion, camp fire or on any of the vehicles or on game drives.</li></ul>
<b>Child policy</b>	<ul style="list-style-type: none"><li>• Children aged 6 and above are welcome - if a client makes an exclusive booking for the whole camp then children of any age are welcome.</li></ul>
<b>Rates</b>	<ul style="list-style-type: none"><li>• Rates are available on request and we reserve the right to change our rates at any time.</li></ul>
<b>Activities</b>	<ul style="list-style-type: none"><li>• Game drives in open Land Rover vehicles to maximize visibility.</li><li>• Each vehicle accommodates a maximum of six or seven guests in bucket seating. Configuration may be altered due to environmental conditions such as dust, wind or rain.</li><li>• Game drives are tailored to client wishes in terms of length and nature.</li><li>• Full day drives with packed picnic meals can be arranged on request.</li><li>• Private vehicles are available on request at an additional cost.</li><li>• Guides brief guests on safe and appropriate behavior to maximize the pleasure of the experience for all guests.</li></ul>
<b>Benefitting others</b>	<ul style="list-style-type: none"><li>• AfrikaAfrika's vision is to see African natural environments protected and local communities develop through good stewardship and revenues generated by responsible tourism. AfrikaAfrika manages systems within the camp which are environmentally friendly, such as conserving precious water resources, we use solar energy and we support local communities and businesses where we can. When employing staff we chose the best person for the job, giving priority to people from the surrounding local communities.</li><li>• AfrikaAfrika donates \$10 per person per night (included in the rates) from each guest to the community to be spent on teachers' housing, teaching aids for the school and other vital community services.</li><li>• AfrikaAfrika is currently engaged in community work in the village of Gibaso bordering the Serengeti National park. Guests are welcome to visit this village as a half-day activity and can easily be organized along with a picnic lunch along the Mara River.</li></ul>

## LUGGAGE & EQUIPMENT

<p><b>Luggage</b></p>	<ul style="list-style-type: none"> <li>• Please be aware of the strict weight restrictions (15kg / 33 lbs) whilst traveling on light aircraft. It is mandatory to bring soft-sided bags so that they can easily be stowed.</li> </ul>
<p><b>Suggested packing list</b></p>	<ul style="list-style-type: none"> <li>• Good quality sunglasses – preferably polarized, tinted fashion glasses are not good in strong light</li> <li>• Sun hat</li> <li>• T-shirts and long sleeved cotton shirts</li> <li>• Shorts</li> <li>• Long trousers</li> <li>• Comfortable walking shoes – bring two pairs in case one gets wet</li> <li>• Warm winter jersey or fleece</li> <li>• Light rain gear</li> <li>• Camera equipment with plenty of memory capacity, batteries and chargers</li> <li>• Binoculars</li> <li>• If client wears contact lenses, we recommend bringing glasses in case of irritation from dust</li> <li>• Basic medical kit including malaria prophylaxis – consult your travel doctor</li> <li>• Moisturizing cream, high SPF suntan lotion and after sun lotion/aloe vera</li> <li>• Personal toiletries</li> <li>• Tissues/wet wipes</li> <li>• Insect repellent</li> <li>• Antihistamine cream to reduce the discomfort and inflammation from any bites</li> <li>• Visas, tickets, passports and money (please note there are no banks or bureau de changes in Serengeti)</li> <li>• Please be aware that USD bank notes printed prior to 2006 will not be accepted by National Parks Authority and most other government and business agencies within Tanzania.</li> </ul> <p>Please note that dark colours are <b>NOT</b> advised whilst on safaris as they attract tsetse flies – best to wear light earthy colours such as beige.</p>
<p><b>Recommended reading</b></p>	<ul style="list-style-type: none"> <li>• <i>Africa's Top Wildlife Countries</i> by Mark Nolting</li> <li>• <i>Behaviour Guide to African Mammals</i> by Richard Estes</li> <li>• <i>Birds of Prey of Southern, Central and East Africa</i> by David Allan</li> <li>• <i>Field Guide to the Mammals of Southern Africa</i> by Chris &amp; Tilde Stuart</li> <li>• <i>The Kingdon Field Guide to African Mammals</i> by Jonathan Kingdon</li> <li>• <i>Photographic Guide to the Trees of Southern Africa</i> by Braam van Wyk</li> <li>• <i>The Safari Companion</i> by Richard Estes</li> <li>• <i>The Scramble for Africa</i> by Thomas Pakenham</li> <li>• <i>Tourist Travel and Field Guide Serengeti</i> by Veronica Roodt</li> </ul>

## MONEY

<p><b>Rates include</b></p>	<ul style="list-style-type: none"> <li>All rates include full room and board, all drinks, laundry service, road transfers from Kogatende airstrip and Serengeti Mara Camp, two game drives per day or full day game drive with resident camp guide, community conservation levy @ \$10 per adult per night (16 years and above) as well as camping fees.</li> </ul>
<p><b>Rates Exclude</b></p>	<ul style="list-style-type: none"> <li>Serengeti National Park fees @ \$50 per adult per night / \$10 per child (aged 5-15) per night / free for children under five.</li> <li>Private vehicle charge @ \$250 per day.</li> <li>Guide tipping - tipping is not compulsory however if you believe our guides have provided a good service the tipping average amount is usually \$5-10 per guest per day. This tip may be given directly to the guides.</li> <li>Staff tipping - tipping is not compulsory however if you believe we have provided a good service we have a communal tipping box at the end of your stay to be distributed amongst all the camp staff. We ask you not to tip the staff individually.</li> </ul>

## HEALTH

<p><b>Advice</b></p>	<ul style="list-style-type: none"> <li>A physician experienced in travel medicine should be consulted prior to travel to any destination in Africa to advise on all health issues including the need for preventative medication and vaccinations. Further health information can be sought on <a href="http://www.who.org">www.who.org</a> or <a href="http://www.cdc.org">www.cdc.org</a>.</li> </ul>
<p><b>Water</b></p>	<ul style="list-style-type: none"> <li>It is very important that you drink plenty of water especially during the warmer months. It is generally recommended that guests drink at least 2 to 3 litres of water per day to limit the effects of dehydration. This excludes tea, coffee and alcoholic beverages, which act as diuretics and therefore can actually contribute to dehydration. Bottled water is readily available and is provided free of charge.</li> </ul>
<p><b>Malaria</b></p>	<p>Serengeti is within a malaria zone so please remember that the best precaution against malaria is the preventative kind:</p> <ul style="list-style-type: none"> <li>Avoid being bitten by using insect repellents liberally.</li> <li>Wear long-sleeved shirts and trousers/slacks in the evenings.</li> <li>Keep your mosquito net closed at night to prevent insects entering.</li> </ul>
<p><b>Dietary requirements</b></p>	<ul style="list-style-type: none"> <li>For those guests with specific dietary requirements please ensure the lodge is notified prior to arrival. Please note we support local businesses by mainly serving fish, squid, octopus and crab.</li> </ul>
<p><b>Prior medical conditions</b></p>	<ul style="list-style-type: none"> <li>Please notify the camp of any medical conditions you may have prior to your arrival. This includes any allergies e.g. bee stings, nuts, shellfish etc.</li> </ul>