

Mole-Richardson®



650 WATT MOLEQUARTZ® TWEENIE II SOLARSPOT®

TYPE 4821

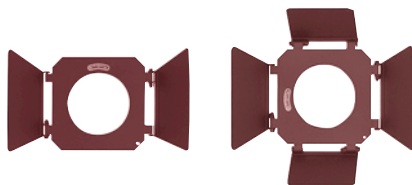


FEATURES

The 650 watt Molequartz® Tweenie II Solarspot® with circular channel construction for added strength and more efficient airflow resulting in cooler operation. Less heat on the fixture and lower seal temperature of the globe for longer life. Front opening door for easy globe access. New socket with quick globe release. Focusing knob on front and rear for focusing from spot to wide flood with smooth even field. Uses three globes - 650 watt FRK, 500 watt FRG, or 300 watt FKW with 1.83" L.C.L. For use in Motion Picture, Television and Still Photographic Studios as a keylight, backlight or kicker.



TYPE 4821 MOLEQUARTZ® TWEENIE II
SOLARSPOT® MOUNTED ON TYPE 40651A
BABY SIZE STANDARD STAND



Type 40445
2-Way Barn Door
(2 Leaf)

Type 40445A
4-Way Barn Door
(4-Leaf)



Type 40437A
Moledisc Diffuser Frame



Type 23535
Molering Diffuser Frame



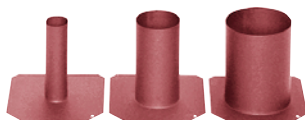
Type 5526D
Half Double Moledura Scrim



Type 5523D
Double Moledura Scrim



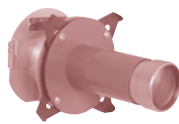
Type 23532
Molesnoot (Five-in-one)



Type 40438A Molesnoots (set of 3)



Type G135
Scrim Bag



Type 282100
Mole Focal-Spot



Type 500119
Hanger Adapter (5/8" Spud)



Type 1201 C-Clamp

ACCESSORIES

- 40445 2-Way Barn Door (2 Leaf)
- 40445A 4-Way Barn Door (4 Leaf)
- 40437A Moledisc Diffuser Frame (5 1/8" dia.)
- 23535 Molering Diffuser Frame (5 1/8" dia.)
- 5523S Single Moledura Scrim—
Stainless Steel Screen (5 1/8" dia.)
- 5523D Double Moledura Scrim—
Stainless Steel Screen (5 1/8" dia.)
- 5526S Half Single Moledura Scrim—
Stainless Steel Screen (5 1/8" dia.)
- 5526D Half Double Moledura Scrim—
Stainless Steel Screen (5 1/8" dia.)
- 23532 Molesnoot (Five-in-One)
Apertures 1", 1 3/8", 1 3/4", 2 1/8" and 2 1/2"
- 40438A Snoots (Set of 3)
- G135 Scrim Bag
- 280340 Scrim Box
- 5529 Blue Molocolor Daylight
Conversion Filter
- *282100 Mole Focal-Spot
*See Focal-Spot Bulletin.
- 1201 C-Clamp
- 4022 Molegator Grip
- 500119 Hanger Adapter (5/8" Spud)
- 500141 Baby Wall Plate
- 500144 Baby Stand Bracket
- 500190 Baby Trombone
- 500216 Baby Stand Triple Head
- 500250 Baby Stand Double Head
- 500327 Baby Spud Pole Adapter
- 500333 Cluster Hanger
- 500343 Junior to Baby Hanger Adapter
- †500403 Adjustable Hanger Group
- †500424 Telescoping Hanger Group
†Refer to Hanger Section.
- 500547 Right Angle Baby Wall Plate
- 500649 Molegrip Chain Wrench (5/8" Spud)
- 50073 Junior to Baby Stand Adapter
- 500768 Baby Offset Arm

STAND SUBSTITUTIONS

- 75 Comet Lamp Boom
- 1391 Baby Size Low
- 1581 Baby Size Sky-Hi Litewate
- 2541 Baby Size Compact Litewate
- 2751 Long Moleboom
- 3281 Baby Size Standard Litewate
- 4811 Baby Size Low Compact Litewate

PERFORMANCE DATA

TYPE 4821 MOLEQUARTZ® TWEENIE II

SOLARSPOT® Using FRK, 650 watt, 120 volt, 3200°K quartz globe.

| Distance Feet | Light Intensity F. C. | | Beam Diameter* Feet | |
|---------------|-----------------------|-----------|---------------------|-----------|
| | Max. Flood | Min. Spot | Max. Flood | Min. Spot |
| 5 | 280 | 2265 | 5.7 | 0.8 |
| 10 | 78 | 660 | 11.3 | 1.4 |
| 15 | 30 | 315 | 17.3 | 2.3 |
| 20 | 18 | 180 | 22.7 | 3.0 |

*Light tapers smoothly at edge of field. Diameters listed are flat area diameters at which the intensities are approximately 50% of tabulated intensities at beam center.

SPECIFICATIONS

HEAD: Type 4821, 650 watts.
RATING: 120, 220 or 240 volts, A.C. or D.C., 8.3 amps max.—650 watts max.

SOCKET: 2-pin prefocus.

SWITCH: Thru-cord type in cable.

CABLE: 25 feet, Type SO, 3 conductor #18 AWG with 3-prong grounding houseplug.
(Other plug substitutes are available).

CONSTRUCTION: Aluminum with vertical circular interlocking channels for ventilation and perforated sheet steel in trough.

YOKE: Cast aluminum. Fits any standard 5/8" dia. stand spud or 5/8" hanger spud.

CONDENSER: 4 15/32" dia. Fresnel lens of glass 17° to 70° field angle.

MIRROR: Alzak aluminum.

FOCUSING: Rotating plastic knobs—front and rear.

SIZE: 8 3/4" x 8 3/4" x 11 1/16".

FINISH: Clear Anodized Aluminum and Maroon Powder Coated Enamel.

HEAD WEIGHT: 5 lbs.

CABLE WEIGHT: 1 3/4 lbs.

STAND: Type 40651A Baby Size Standard with standard 5/8" dia. spud.

LOW: 40 inches.

HIGH: 100 inches.

FOLDED FOR STORAGE: 39 inches.

STAND TOP TO LIGHT CENTER: 7 7/8 inches.

STAND WEIGHT: 16 1/2 lbs.

GLOBE TABLE

TYPE 4821 MOLEQUARTZ® TWEENIE II SOLARSPOT®

Base, 2-pin prefocus. Burn with coil horizontal. T-8 bulb, 1.83" L.C.L.L.

| Watts | Ordering Code | Color Temp. °K | Finish | Volts | Life Hours | Amps |
|-------|---------------|----------------|--------|-------|------------|------|
| 650 | FRK | 3200 | Clear | 120 | 200 | 5.4 |
| 650 | FRL | 3200 | Clear | 220 | 150 | 3.0 |
| 650 | FRM | 3200 | Clear | 240 | 150 | 2.7 |
| 500 | FRG | 3200 | Clear | 120 | 150 | 4.2 |
| 500 | FRH | 3200 | Clear | 220 | 150 | 2.2 |
| 500 | FRJ | 3200 | Clear | 240 | 150 | 2.1 |
| 300 | FKW | 3200 | Clear | 120 | 200 | 2.5 |
| 300 | FSK | 3200 | Clear | 240 | 150 | 1.2 |

Globes not included in price of lamp.
See price list for complete details.

Mole-Richardson Co.

937 North Sycamore Avenue, Hollywood, California 90038-2384 U.S.A.

Tel. (323) 851-0111 Fax. (323) 851-5593 E-Mail: info@mole.com

World Wide Web: http://www.mole.com

©Mole-Richardson Co., Hollywood, CA



Litho in U.S.A.