

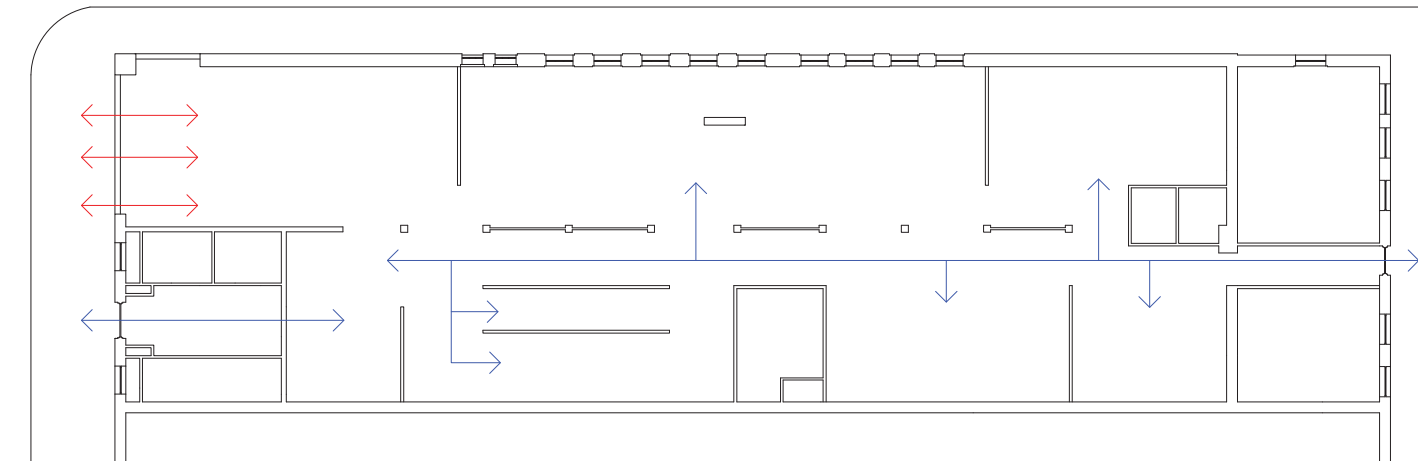
architecture lives here

MAX MIN the university of tennessee
college of architecture & design
2 0 1 0 DOWNTOWN STUDIO

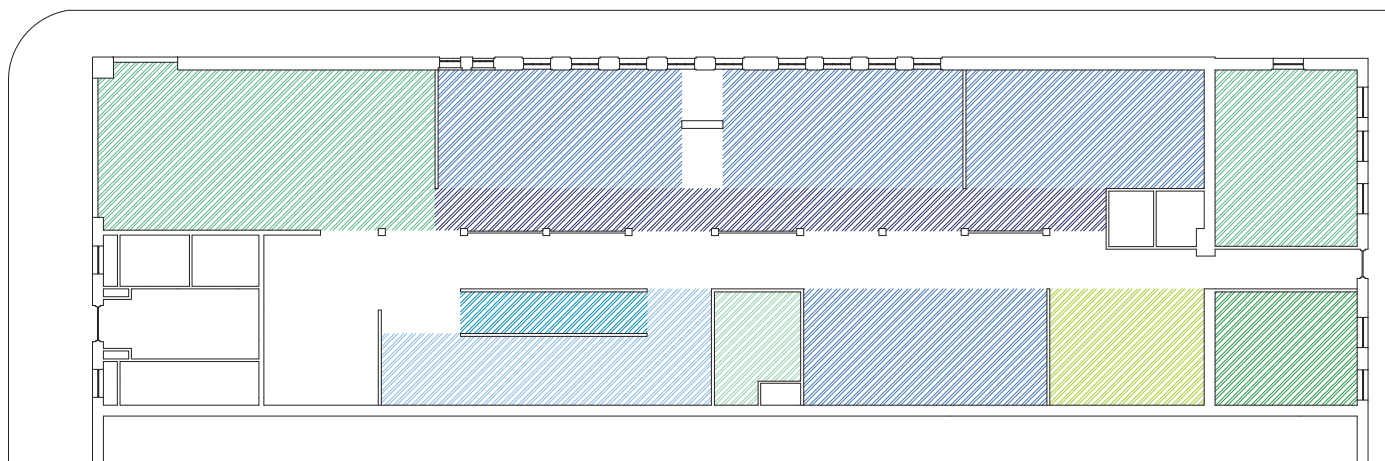


The goal for the downtown studio space is to promote the presence of the University of Tennessee College of Architecture and Design program to the urban context of downtown Knoxville. The current display cases were taken away to provide a larger gallery and viewing area for passers-by. The new face of the building will be incased with glass sliding doors that will open for public functions such as Gay Street's First Friday Shows that will attract crowds to enter and look at the work being made. The main entrance that will primarily be used by students and staff was moved to the shared access entrance with the

upper level offices. The redesigned facade activates as the "fish bowl" for pedestrians to experience and raise awareness of the design studio culture the college embodies. Walking along Gay Street, they are pulled into the space and pedestrians have the opportunity to view current student work, crits, pin-up discussions, and also projects from the East Tennessee Community Design Studio at any given time. By extending and MAXimizing program to the street, the goal of promoting the UT architecture and design program is achieved to educated residents of the city of Knoxville and tourists with MINimum knowledge of it's presence.



CIRCULATION AND VIEWING



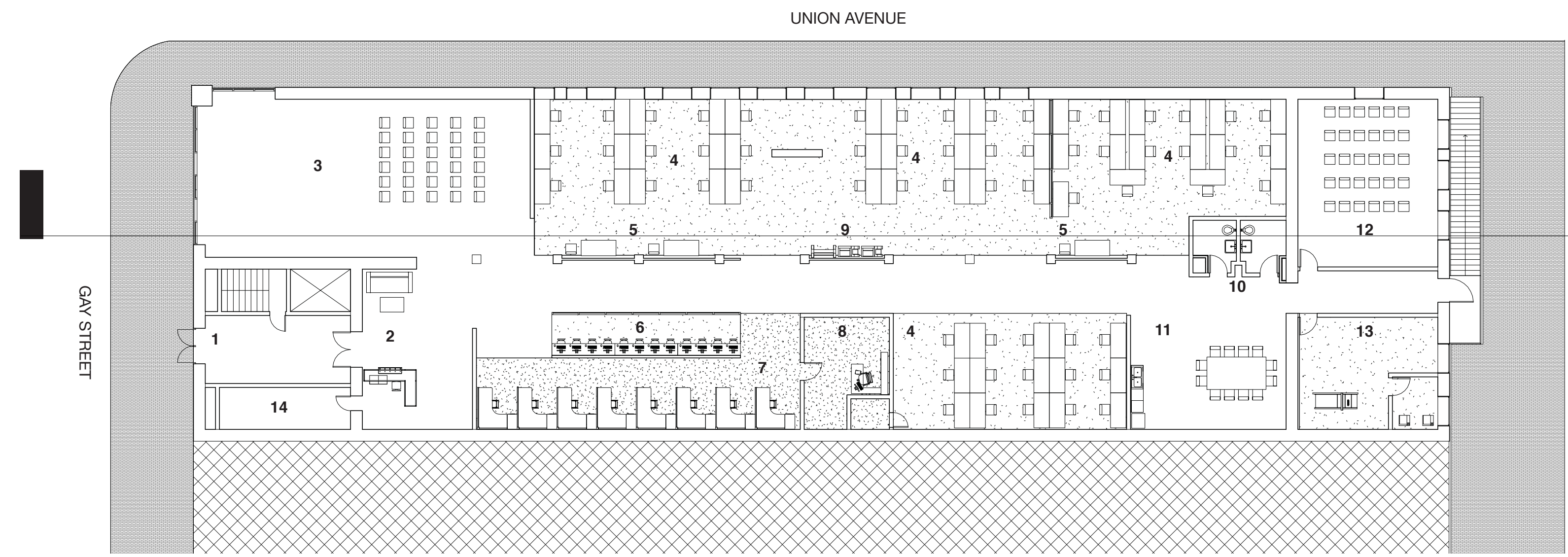
PROGRAMATIC DISTRIBUTION

- PEDESTRIAN VIEWING + ACCESS
- STUDENT + EMPLOYEE ACCESS



GALLERY AND PRIMARY REVIEW SPACE

- BUILDING LEGEND**
- | | |
|-----------------------------------|---------------------------|
| 1 MAIN ENTRANCE | 8 DIRECTOR'S OFFICE |
| 2 RECEPTION | 9 PRINTING AREA |
| 3 GALLERY/PRIMARY REVIEW SPACE | 10 RESTROOMS |
| 4 DESIGN STUDIOS | 11 KITCHEN/DINNING |
| 5 FACULTY STATIONS | 12 SECONDARY REVIEW SPACE |
| 6 MEDIA LAB | 13 MODEL SHOP/LASER ROOM |
| 7 EAST TN COMMUNITY DESIGN STUDIO | 14 STORAGE |



PLAN AT 1/16" = 1' SCALE



MEDIA LAB + MAIN HALLWAY + ETCDs



DESIGN STUDIO + FACULTY STATION



LONGITUDINAL SECTION AT 1/16" = 1' SCALE