



In This Issue

page 1...

Kerry Hudson

page 2 ...

About TWA/Mission Statement
Club Officers and Committee Chairmen
By the Numbers
TWA on Facebook
New Member Welcome
Announcements

page 3 ...

Diane's TidBit's
WoodToy News
Petes Auction

page 4 & 5...

Members Page
February meeting minutes
Garrett Hack
February candidis

page 6 & 7...

2013/2014 Programs
Mentors listing
Library information
TWA Sponsors
List of Books & DVDs

page 8

TWA Welcomes Kerry Hudson

Tuesday

March **18th**, 2014

6:55 PM

at the Woodworking Shop
3141 Capital Boulevard, Raleigh, NC

Several members meet at 6:00pm at Buffalo Brothers Pizza & Wings
for dinner prior to the meeting. Please join us!

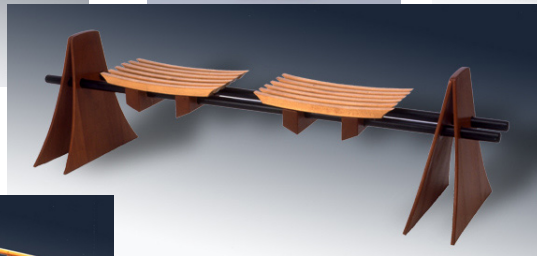
Designing Benches of Wood and More

Kerry Hudson of Kerry Hudson Design builds furniture and sculpture in Chapel Hill. He combines wood, stone, and steel to produce beautiful furniture like the bench shown. Kerry will talk to us about designing his benches and how he incorporates materials other than wood into his work.

Visit his website at <http://www.kerryhudsondesign.com>

Photos taken from Kerry's website.

Host: Jeff Leimberger



May you have the
hindsight to know
where you've been,
the foresight to know
where you are going,
and the insight to
know when you have
gone too far.

"Irish diplomacy is the ability to tell a man to go to hell so that he looks forward to making the trip." ~ Irish saying

About the Triangle Woodworkers Association (TWA)

The Triangle Woodworkers Association (TWA) is a nonprofit educational corporation. The TWA is dedicated to teaching woodworking techniques through seminars, classes, and workshops; participants are required to sign waivers absolving liability for TWA or its designated representatives. The TWA promotes woodworking education and community interest in woodworking and in general **sharing a love for wood**.

Club Officers and Committee Chairmen

Executive Board

President: Diane Philyaw, (919) 764-9266
dphilyaw2365@yahoo.com or
irishrose2365@yahoo.com

Vice President: Jeff Leimberger (919) 698-8927

Secretary: Janet Batker
jannewgrov@aol.com

Treasurer: Hugh Fish (919) 467-5696
hughpatfish@yahoo.com

Members @ Large: Pete Bucki, Kay Baker, Open

Committee Chairman

Program: Jeff Leimberger (919) 698-8927

Toys for Tots: Fred Ford, (919) 469-9575

Newsletter: Diane Philyaw, (919) 764-9266

Historian: Diane Philyaw, (919) 764-9266

Library: Kay Baker, (919) 696-8504
kdbakerkdb@yahoo.com

Membership: Kay Baker, (919) 696-8504

Publicity: Allan Campbell, (919) 772-4551
aacjr@nc.rr.com

Mentor: Larry Bradbury,
lbradbury12@yahoo.com

Facilities &
Refreshments: Chuck Arnold
woodenitbenice@nc.rr.com

Raffle: Mike Payst,
mpayst@nc.rr.com

Sponsor: Bill Anderson, (919) 932-6050
willardanderson@bellsouth.net

Hospitality: Pete Bucki, (919) 380-8860
peteb301@att.net

Auctioneer: Pete Bucki, (919) 380-8860

Fundraising: Pete Bucki, (919) 380-8860

Photographer: Ed Mastin,
emastin@nc.rr.com

Audiovisual: Tom Revelle, (919) 387-8286

Webmaster: Roger Philyaw, (919) 764-9266
rphilyaw1@gmail.com

TWA News is published monthly and is e-mailed to members. If you are interested in contributing articles, please send to Diane our Newsletter editor at trianglewoodworkers@gmail.com or her personal email irishrose2365@yahoo.com or you can submit by mail to:

Triangle Woodworkers Association

P.O. Box 4206

Cary, NC 27519-4206

BY THE NUMBERS

Treasurer's Report

Beginning Bank Balance:	\$9,410.49
Income:	\$217.00
Expense:	\$1,308.59
Ending Bank Balance:	\$8,318.90

Note: figures exclude petty cash & other "slush" funds.

Note: \$1910.00 in Toys for Tots (personal & raffle) donations.

Submitted by: Hugh Fish

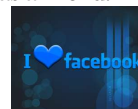


TWA is on Facebook



On our website, www.trianglewoodworkers.com, you can hit the link to "like" us on Facebook or if you do not have a facebook page you can create one if you like. Or you can go to www.facebook.com and search for TWA and add us as a friend.

I am adding many of the photos from events to our Facebook page - many of these I cannot fit into the newsletter. Be sure to look for new items.



NEW MEMBER WELCOME

We welcome **1** new member this month.

Leo Reynolds of Chapel Hill

A colored dot on a name tag indicates that the member is new, so be sure to say hello and welcome them.

Membership Chairman: Kay Baker

Announcement

Pete Bucki is our Hospitality Chairman and would like any news of illness or misfortune or better yet something really good happening to one of our members -- Please contact Pete so he can share.

Gus Stefureac is not doing well. He is living at the Carillon Assisted living facility at 5219 Old Wake Forrest Rd, about a block off of Millbrook Rd.

He loves company. Call first. His phone number is 919-900-4175

Pete can be reached at: (919) 380-8860 peteb301@att.net





Diane's TidBits

I can hardly believe another month has gone by. I wish I had some fantastic words of wisdom to share -- but...

I went on the hunt for something interesting to share and I found this...I hope you all enjoy and I hope you go to the website for the full interview.

The "Lucky" Ones

— **An interview with Irish woodworking artist Aislinn Lynch**



Aislinn Lynch is an Irish designer working in wood veneer. After earning her BA in Interior and Furniture Design from the Dublin

Institute of Technology in 2011, Aislinn (pronounced Ash-lin) was awarded studio space and mentoring at the Malthouse Design Centre, where she is currently based as a Resident Designer. She became interested in woodworking in her last year as an undergraduate and has since exhibited her work in galleries such as the Light Fantastic, where her collection "Lady" was showcased along with more than a dozen Irish lighting designers.

Growing up between Dublin, Chicago, and Windsor, England, Aislinn's profession is a bit of a departure from her upbringing—her parents worked in finance. But her passion for creating beautiful works of art with her hands has proved fulfilling, and at times, surreal. Her positive, open-minded demeanor, combined with her intuit for aesthetics, have paved the way for a long-lasting career in the world of design. But money isn't anywhere near her biggest

motivating factor. It's simply the joy of creating and collaborating that inspires her work.

Being a female designer myself and having a background in graphics and my love for all things hand created, I found her interview very rewarding.

As of today I plan to join you Tuesday night, fingers crossed I will have a good day. My medical team has promised brighter days ahead...I am ready and I know my family is as well. Illness takes over your life and is a very hard thing not only on you but on all those that love you. I thank all of you for your continued concern and support.

Till next time...

Diane

"If you're lucky enough to be Irish, you're lucky enough!" - Irish Saying

TWA News...

3

www.trianglewoodworkers.com

Wood Toy News

<http://www.toymakingplans.com/website/News/Wood-Toy-News.html>

Learn toymaking secrets.
Plus valuable tips and techniques.
... and much more!

Don't Miss a Single Issue!



Enter your email address for your FREE subscription*.

You'll receive a confirmation email with a link to this weeks Wood Toy News. You'll also receive a free email subscription to Wood Toy News, plus Members Only Special Offers and New Product Announcements.

We release new toy plans weekly!

Pete's Updates & Info

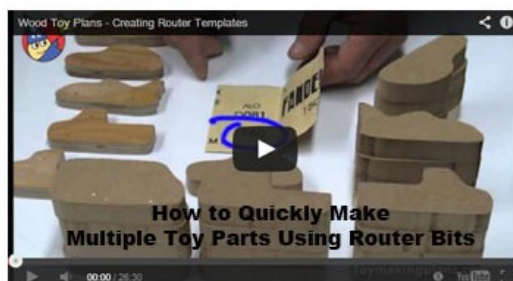
No Raffle this month!

We are still looking for additional donations of Woodworking Tools, powered or not, wood, and other hardware items for the next TFT auction.

Contact Pete Bucki at peteb301@att.net or call 919-380-8860.

Thanks so much!

Pete



Even if you've never used a router bit or are not familiar with routers you'll want to read this article. This may be a tool you'll want to add to your wood shop!

Click to watch video for Wood Toy News

Watch the Wood Toy News Video

Membership Pages

TWA News...

4

www.trianglewoodworkers.com

Meeting Minutes

February 2014

Jeff Leimberger, our Vice President started the meeting, one guest present, a potential new member!

Diane Philyaw our president is still undergoing medical treatment and Fred Ford was on vacation.

Show & Tell:

Ron brought his birdhouse from the workshop with Don Stevenson last month, a pretty intense workshop in which all worked steadily. The results were fantastic. Very few birds will ever be allowed in these products!

Alan Leland brought in a bowl to demo, he is teaching a class March 22 at Klingspor.

Bernie Bogdan brought in a carving he is working on to pique interest in the carving festival to be held March 15 here at the Klingspor shop, free, (furniture can be entered). Bernie's carving is part of a quilt that will be auctioned off at the workshop. (Theme is North Carolina). There is a Carving Group meeting the second Sunday of the month at Klingspor at 2pm with speakers. Bernie thanked his well wishers; sadly, his daughter recently passed away from breast cancer.

Announcements:

Jeff plugged next month's speaker, Kerry Hudson, a furniture designer/maker who incorporates assorted other materials into his wood pieces.

In April, Garret Hack will be here for our meeting, but note the date change to Friday night April 18, and we will have a weekend workshop. If you are interested in the workshop, see Jeff and give him a check for \$75.

Program:

Our speaker tonight is Peter Ross, THE master blacksmith at colonial Williamsburg for 25 hard earned years. His job was to figure out how they made stuff 200 years ago and how to do it again somehow, someday. The topic of his talk centers on the mentality of the 18th century workmen. We all grew up around industry and machinery, and are familiar with it, we are precise. In the 18th century it was different. For instance, rulers were divided into quarters and half quarters, so how you make your piece according to measurement is different. Tonight we will also get a primer on hardening and tempering steel.

Ironworking trades in the 18th century were specialty trades, Blacksmiths made pieces left black from the fire or coarser pieces of work and whitesmiths polished the products

they made which ended up "bright", which cost more money. The epiphany for Peter in the difference in our techniques was when he was asked to make a spit jack. He was told to copy an old one. He took it apart and measured it and made all the parts and until he tried to put it together he thought it was a great job. Then he realized it took him too long to make the project. He realized that the old assembly is different from our custom, the smiths assembled their products by making each part fit its counterpart or predecessor. Woodworkers tend to make precise parts that fit when we assemble them. Then Peter showed us some of the old techniques used in building a 1765 law office in Louisburg, with a hinge "botched" on with the wrong nails. Botching was a term used when you set the wrong nails for a task into leather washers to prevent the nail heads from snapping off. Our standard today for what is aesthetically acceptable is much more rigorous than in the past since we are more precise. Lots of woodworking was apparently "botched" in the old days. Good thing we don't do that so much now.

As far as tools go, he had a chance to look at the tools in the Seaton chest (a famous 1797 toolchest with the original tools purchased by Benjamin Seaton, a joiner who had just finished his apprenticeship, and hardly used). The tools were not finished to modern standards.

18th century cutting tools are laminated steel buried in iron and welded, then drawn out to a tang. Filed, ground, hardened and tempered steel. Pete briefly discussed the evolution of steel making-blister steel became single something steel, then crucible or cast steel evolved.

After break we discussed hardening and tempering steel. Steel is a combination of ingredients, mostly iron. 1/2-1% carbon iron in the 18th century. Same now! Iron alone cannot be hardened. W1 is the simplest steel you can buy. W means water hardening (O1 is oil hardening and A1 is for air quenching). Quenching means to cool. The harder it is, the more brittle steel becomes. Alloys are added to make them less brittle. The harder the steel, the more difficult to sharpen. Heat treating steel and cooling it quickly freezes steel in an abnormal structure. Phase change happens at the critical temperature which is the point at which you want to cool it. Steel won't attract a magnet at the critical temperature. Heat, check with magnet and quench-steel is hard and brittle, then temper (reheat) and make less brittle and less hard by reheating. Gauge how hot at tempering by comparing color to the pre-heated/marked steel bar. Need to grind or polish the end of the hardened steel in order to compare the color. Tempering does not require a quench. That was pretty much the end of our talk and demonstration. Pete did actually bring a torch to demonstrate some techniques and obviously there were a number of members who had some familiarity with metallurgy, and how to harden their own steel. I will continue to rely on mainstream suppliers. Pete did bring some examples of his work and it is handsome and unique (for this century).

Respectfully submitted by: **Janet Batker Secretary**

A sneak peek at April

May neighbours respect you, trouble neglect you, the angels
protect you, and Heaven accept you.

Garrett Hack returns to TWA

Garrett Hack is a contributing editor to Fine Woodworking magazine and builds furniture and works on his farm in Vermont. He is the author of *The Handplane Book* (Taunton Press, 1997), and *Classic Hand Tools* (Taunton Press, 1999). TWA is happy to have Garrett return for another presentation and weekend workshop. He is one of America's foremost teachers of woodworking skills, teaching at schools and clubs around the country. He also has done numerous videos for FineWoodworking.com. In his Friday evening presentation, Garrett will talk about his design process. He will touch on what makes a design good – or bad. Visit his website at GarrettHack.com to learn more about this gifted furniture maker.

April 19-20 – Garrett Hack Workshop - Furniture Details: Decorative Edges and Faces

This workshop will give you a chance to experiment with making and using decorative inlays that can be added to your next piece of furniture. You will also learn how to add details to edges and cuffs to legs. From Garrett's description: "Each day we will demonstrate a technique and make some of the necessary tools. We'll talk about ways to use each detail and variations that are possible. Most of the day will be yours to work on a sample board of decorative details. We will also work on edge details. The most important place we will start is with smoothing a surface to a polish right off the plane. This leads to chamfers and edge details — chamfers at different angles and ones that grow or shrink as they move around an edge, underbevels, molded edges, and if we have time, an inlaid edge."

The workshop will be held at Alan Campbell's workshop in Garner. Cost is \$75 for the weekend. This workshop is \$250 at the Lie-Nielsen facility, so take advantage of a great opportunity.

Please call Jeff Leimberger at 919-698-8927 to reserve a spot (upon a deposit)..

Presented by: Jeff Leimberger and his team

Meeting cadids provided by Ed Mastin

Bernie
Bogden



water quenching



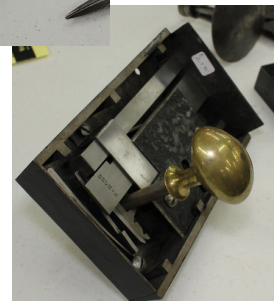
hardening steel



color of temps on steel



hinge



\$2500 lock

www.trianglewoodworkers.com

Upcoming Events

2014 PROGRAMS

Available On-Line

@

www.trianglewoodworkers.com

<i>Month</i>	<i>Program</i>	<i>Speaker</i>	<i>Workshop</i>
March 18 th	Design of benches	Kerry Hudson	
April 18 th	TBD	Garrett Hack	April 19 th & 20 th
May 23 rd	Pyrography	Michele Parsons	
June 17 th	??		
July 15 th	Finishing	Jay Cash	
August 22 nd	A Chairmaker's Realm/Chair design, Cutting tools workshop	Brian Boggs	August 23 rd & 24 th
September 15 th	Carving Wooden Utensils	Jay Speetjens	
October 24 th	TBD	Michael Fortune	October 25 th & 26 th
November 18 th	??		
December 9 th	Toys for Tots	Fred Ford	

What is mentoring?

Mentoring is most often defined as a professional relationship in which an experienced person (the mentor) assists another (the mentoree) in developing specific skills and knowledge that will enhance the less experienced person's professional and personal growth.

Mentors

The purpose of this program is to have a reference guide to call when you need to "pick someone's brain", Rule #1 in woodworking: nobody has a monopoly on brains! This list of people includes: contact information, projects the Mentors are comfortable offering advice about, and skills they would be able to help with.

<i>Mentor</i>	<i>Service/Skill Offered</i>	<i>Phone Number</i>	<i>Email Address</i>
Bernie Bogdon	Relief Carving	(919) 850-0739	sabile_27615@yahoo.com
Hugh Fish	Chairs, Joinery, Machinery & Power Tools, Mantles, Routers, Tables and TV Cabinets, Turning	(919) 467-5696	hughpatfish@yahoo.com
John Margeson	Baby Furniture, Beds, Bookcase, Chairs, Chest, Decks, Tables	(919) 876-3476	jmalice@bellsouth.net
Scott Miller	Compound Cutting, Scroll Sawing	(919) 233-0204	smiller@aol.com
Mike Resar	Baby furniture, Beds, Bookcase, Cabinets, Chest, Drafting, Dressers, Tables, TV Cabinets	(919) 876-1664	atwaterla@ncleg.net
Allen Campbell	Simple inlay, Staining/dyeing, Pen turning, Cabriole legs	(919) 772-4551	aacjr@nc.rr.com
Cecil Raynor	Joinery, Finishing, Tables, Chairs	(919) 870-0508	raynorc@bellsouth.net
Amy Dowden	Google SketchUp		
Chuck Arnold	Countertops & Plastic Laminate	(919) 995-2301	woodenitbenice@nc.rr.com

TWA Sponsors

Anchor Hardwoods 919-790-9449
6716 Old Wake Forest Rd., Raleigh, NC
10% discount to members

Ashcroft Saws and Tools 919-876-3223
3216-G Wellington Ct, Raleigh, NC
25% off list on blades and 10% off on sharpening

Capitol City Lumber Co. 919-832-6492
4216 Beryl Road, Raleigh, NC 1-800-244-6492
http://www.capitolcitylumber.com
Special prices to TWA members

Edwards Mountain Woodworks fine handtool woodwork-
ing: creating and teaching in wood. For further information
on the workshops, schedule, and tools needed and any other
requirements email Bill Anderson at bill@edwardsmountain-
woodworks.com or call 919-932-6050, evenings.
Tuition discount for club members.

The Hardwood Store 1-888-445-7335
Gibsonville, NC www.hardwoodstore.com
Discount: 10 cents per board foot

Guy C. Lee Building Materials 362-1444
900 N. Salem St., Apex, NC

Keglers Woodwerks LLC 919-608-7220
330 Dupont Circle Raleigh NC mkeglers@earthlink.net

Klingspor's Woodworking Shop 919-876-0707
3141 Capital Blvd. (.9 mile N of Beltline exit 11)
www.woodworkingshop.com
10% discount excluding lumber and power tools

Raleigh Saw 919-832-2248
5805 C Departure, Raleigh, NC 27616
10% discounts on all new products

Stock Building Company 919-828-7471
3000 Yonkers Rd Hwy. 64 & Old US 1, Raleigh, NC

Tarheel Wood Treating Co. 919-467-9176
Highway 54, Morrisville, NC
*Contractors prices on all wood products
Show TWA card before order is written*

Woodcraft 919-781-1911
4317 Pleasant Valley Road fax: 919-781-1980
Raleigh, NC 27612
Email: raleighwoodcraft@bellsouth.net http://www.woodcraft.com
\$25 gift certificate at each TWA meeting for the raffle

Woodworker's Supply of NC Store (336) 578-0500
1125 Jay Lane, Graham, NC Mail order 1-800-645-9292
www.woodworker.com

Wurth Wood Group 919-231-6620
4213 Poole Rd, exit 15 off 440 Raleigh, NC
http://wurthwoodgroup.com
Preferred prices for TWA members

Library Info

Classified ads are free to all members. To have an item posted send a note to: TriangleWoodworkers@gmail.com or our Newsletter editor: irishrose2365@yahoo.com. All ads will run for 2 months unless otherwise notified.

All TWA members are welcome to sign out a maximum of three items at a time. Items checked out are due to be returned at the next monthly meeting. Returned items should be placed in the "Returns" box in the library area. The late fee for each item is \$2.00 per month. Any late fees owed by a member must be paid before any further materials can be checked out. If you know you can't make it to the next meeting you can avoid the late fee(s) by mailing the item(s) to Kay Baker, 610 Benfield Ct., Garner, NC 27529, or by calling (919) 696-8504.

As we all share a love for wood -- we would like to share the media which we have at our disposal as well. Please be conscious of your fellow member and return items in a timely manner.

To Check Out an Item

Find the circulation card located in the back of books and inside of any material in a case. Sign and add the current date to the card. Place the card in the wooden "Check-out-Box" located on top of the library cart.

Librarian: Kay Baker



Sample of Books

Title	Author	Subject
Building Small Projects	Fine Woodworking	Projects
Working with Handplanes	Fine Woodworking	Hand Tools
Workstations and Tool Storage	Fine Woodworking	The Shop
In the Craftsman Style	Fine Woodworking	Furniture
Smart Workshop Solutions	Anthony, Paul	The Shop
Period Furniture Details	Bird, Lonnie	Furniture
Chests of Drawers	Hylton, Bill	Furniture
Practical Design Solutions and Strategies	Fine Woodworking	Furniture
Setting Up Shop	Nagyszalancy, Sandor	The Shop

Sample of DVDs

Frame and Panel Construction	Graham Blackburn	Technique
Wood Finishing Basics	Michael Dresdner	Finishing
The Versatile Router	Pat Warner	Power Tools
Tage Frid	FWW	Technique
Sam Maloof	FWW	Technique
Hand Planes in the Workshop	Mario Rodriguez	Hand Tools
Chairmaking Techniques	Jeff Miller	Technique
FWW Video Tips Volume 1	FWW	Technique
Making Jigs and Fixtures	FWW	The Shop