

Case Hardened Bushes - Precision Ground Hardened Steel Bushings

Terms and Conditions of Supply.....	Page 2
Drawings & "Dial-a-Bush" Key to Part Numbers	3, 4
Bushes to suit 0.75" to 2" Diameter Pins	5 - 15
Bushes to suit 55mm to 70mm Diameter Pins	16 - 22
Bushes to suit 71mm to 3" Diameter Pins	23 - 24
Bushes to suit 80mm to 3.5" Diameter Pins	25 - 27
Bushes to suit 90mm Dia Pins	Page 28
Bushes to suit 95mm to 120mm Dia Pins	29 - 32
Bushes to suit 125mm to 200mm Dia Pins	33
Easy Glide Bushes - Retrofit for Glacier Bush	34 - 35
Dust Seals Pin Wipers	36 - 37
Bronze Bushes -	38

Pin Steel - Super Pins - 4140 Precision Ground - Induction Hardened Steel Round Bar, Induction Hardened - K1045 - Convenient lengths

Induction Case Hardened Steel Pins - Bucket Pins

Schematic Drawings & Key to KSet Part Numbers	42 - 43
3/4" Diameter to 60 mm Diameter - Hardened Pins -	45 - 50
2 1/2" Diameter to 95 mm Diameter - Hardened Pins -	51 - 56
100 mm Diameter, 4", 4 1/4", 4 1/2", 115mm, to 120 mm Diameter - Hardened Pins -	57 - 59
125mm, 125 mm, 5", 130 mm, 135mm, 140 mm to 160 mm Diameter - Hardened Pins -	60
Weld-on End Plates, Pin Tags, Shim Kits	61 - 65

Aftermarket Pins and Bushings - To Suit:

Case Part Numbers Referenced to KSet Part Numbers	66
Case 580SK Back Hoe Loaders - Case SLE Back Hoe Loaders	67 - 68
Caterpillar Wheel Loaders 950, 966, 980 - Cat Compact Loader CL110 - LHD CL110 Pins	69
Caterpillar Pins Bushes Shims D10 Ripper Frame & D11 Ripper Frame, Caterpillar Bearings	70 - 71
Eimco 130 LHD - Eimco ED7 LHD - Eimco ED10 LHD - Eimco 912 LHD - Eimco 913 LHD	72 - 73
Hitachi Excavators ZX200, EX450, ZX 450, EX520, ZX520	74
John Deere Pins Bushes Shims - John Deere Scraper Wear Rails - John Deere Grader Parts	75
Kato, Kubota, IHI Bucket ends, Kobelco SK045 - SK060, Yanmar VIO 50	76 - 77
Kobelco Excavators - SK135SR-3, SK220, SK250, SK260, SK330	78
Komatsu Pins Bushes Shims Mini Excavators - PC45 - PC60 - PC75UU	79
Komatsu Excavators - PC120 - PC150 - PC128US - PC138US	80
Komatsu PC200 - Pins Bushes - PC228U - Komatsu PC220 - Pins Bushings - PC250	81 - 82
Komatsu PC300 Pins Bushes - PC350 - Komatsu PC400 Pins Bushings - PC450	83 - 84
Komatsu PC600 Bucket Pins Bushes - Komatsu PC800 Bucket Pins Bushings - Komatsu PC1250 Bucket Pins Bushings -	85
Komatsu WA320 Pins Bushes - WA350 - WA380 - WA420 - WA450 - Komatsu WA470 Pins Bushings -	86
Komatsu WA480 Pins & Bushes - Komatsu WA500 Pins & Bushings - Komatsu WA600 Pins & Bushings -	87
Komatsu Part Number to KSet Part Number Cross-Reference List -	88 - 89
Kubota Pins Bushes Shims Excavators - KX161-3 - Kubota KX045	90
Sandvik Tamrok Drills TB40, TB60 Atlas Copco Drills H12, H322 Simba	91
Volvo EC330 Pins & Bushings - Volvo EC460 Pins & Bushings - Volvo EC480D Pins & Bushings -	92

Tools and Accessories

Alpha High Speed Drills & Taps	93
SANDVIK Coromant - Ceramic Inserts - Whisker Reinforced - Hard Part Turning Tips -	94
Sterling - Tools & Measuring - Sterling - Knives & Cutters	95 - 96
FUCHS Extreme Bearing Grease...RENOLIT XTb2 - Lubemate Grease Guns	97 - 98

SALES - Catalogue Items - Phone 02 4928 5700

THE LARGEST RANGE OF HARDENED & GROUND STEEL BUSHINGS IN AUSTRALIA - EX STOCK
INDUCTION-HARDENED PINS AND PIN STEEL

“PROMPT DISPATCH OF GOODS EX STOCK IN EXCHANGE FOR PROMPT PAYMENT”

TERMS AND CONDITIONS OF SALE:

NET PAYMENT WITH ORDER. GOODS WILL NOT BE DISPATCHED BEFORE PAYMENT IS RECEIVED

PAYMENTS: Cheques: To approved customers only. Cash: Correct amount only

MasterCard and Visa Cards accepted. No Transaction Fee is charged on sales under \$1,000

Electronic Transfers to: KSet Engineering Pty Ltd BSB: 06 2813 Account No.: 1038 8155

The Purchaser agrees that no warranty is implied or given and to hold KSet Engineering unaccountable for any loss or damage occurring due to faulty parts or materials. TITLE does not pass to purchaser until Payment has been received in FULL.

Minimum Product Order \$150 plus GST

COUNTER SALES: By APPOINTMENT ONLY Between 8:30am-2:30pm

KSet Engineering Pty Ltd is a Manufacturing Wholesaler, Not a Retail Shop

RESTOCKING FEE: 16% or \$50 Minimum No credit is given for goods returned after 14 days from invoice or without KSet Management consent, nor for goods that have been fitted

Re-Wrapping charges apply if not in original wrapped condition.

7 DAY ACCOUNTS May be extended to customers who have traded satisfactorily, with a Credit Limit at our discretion. Non-Supply is also at our discretion should trading exceed 21 days

DISTRIBUTOR ACCOUNTS: 30 DAYS EOM

Trading must exceed \$20,000 p.a. and a minimum of 2 invoices per month. Credit limit at our discretion
Trading automatically suspended if account is outstanding 32 days from end of month following invoice

CUSTOM ENGINEERING - Phone 02 4928 5702

Minimum Custom Order \$240 plus GST

INDUCTION HARDENED PINS - From SAME DAY service where hardened bar stock is used

SPECIAL HARDENED BUSHINGS - From SAME DAY service where we are able to modify stock items to around 10 working days for new items

TERMS AND CONDITIONS OF SALE - ALL CUSTOMERS

We submit a written quote in answer to your enquiry. We require 50% deposit received by bank

Written order before commencement, and 50% balance before dispatch

Orders under \$1,800: Full payment with order

FREIGHT All goods are carried by KSet Engineering preferred major freight companies at competitive prices
Freight, Plus Packing, Handling, Insurance are included on invoice as two separate items.

F Codes for Freight

Plus P Codes for Packing, Handling, Insurance:

F3	3kg Airbag	\$17	PB1	Airbag	\$12
F5	5kg Airbag	\$28	PB2	2 Bags	\$17
FB	Fastways Blue Label Newcastle	\$9	PC1	HD Carton	\$14
FL	Lime label Sydney Region	\$13	PC2	2 HD Cartons	\$22
FNT	Northern Territory / Remote Surcharge	\$21	PSK	Small skid	\$22
FR	Road Freight via Star Track	POA	PMS	Medium skid	\$26
FWA	Remote WA Surcharge	\$21	PPT	Pallet	\$37
			PFastC1	1 Carton Fastways Freight Forward	\$13

ONFORWARDING:

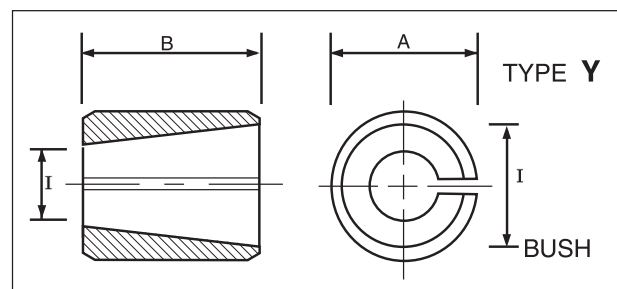
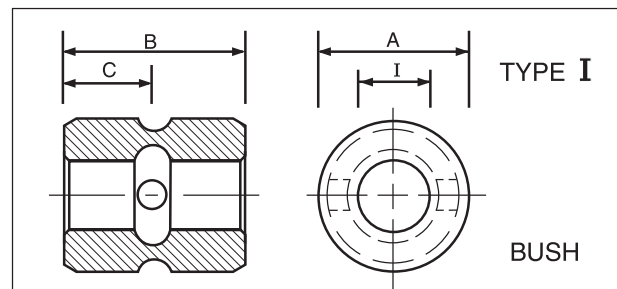
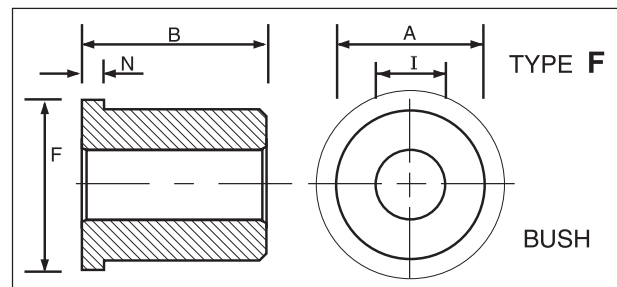
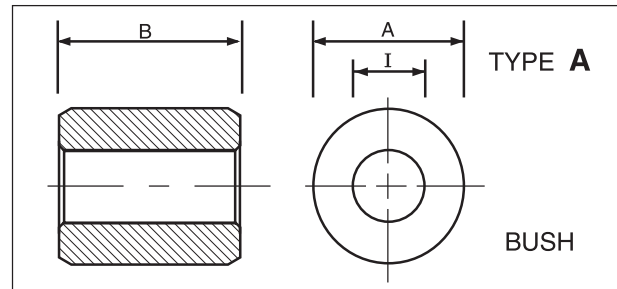
FM Manual Consignment Charge \$10 Plus The same Packing, Handling item is applied
When goods are sent “freight on”, they are NOT INSURED, and purchaser assumes ALL RISK.

Configuration Index - Bushes

TYPE	DESCRIPTION
A	= PLAIN BUSH
E	= CENTRAL EXT. GROOVE WITH HOLES
F	= FLANGED BUSH
I	= CENTRAL EXT. & INT. GROOVE, HOLES
J	= CENTRAL EXT. & "FIGURE 8" INT. GROOVE, HOLES
N	= SPACER, LENGTH CRITICAL
R	= BUSH, RECESSED FOR SEAL
U	= INTERNAL CENTRE GROOVE, NO HOLES
W	= THRUST WASHER
X	= "FIGURE 8" INT. GROOVE, NO HOLES
Y	= INT. TAPER & SPLIT EXPANDING BUSH

Dimension Index

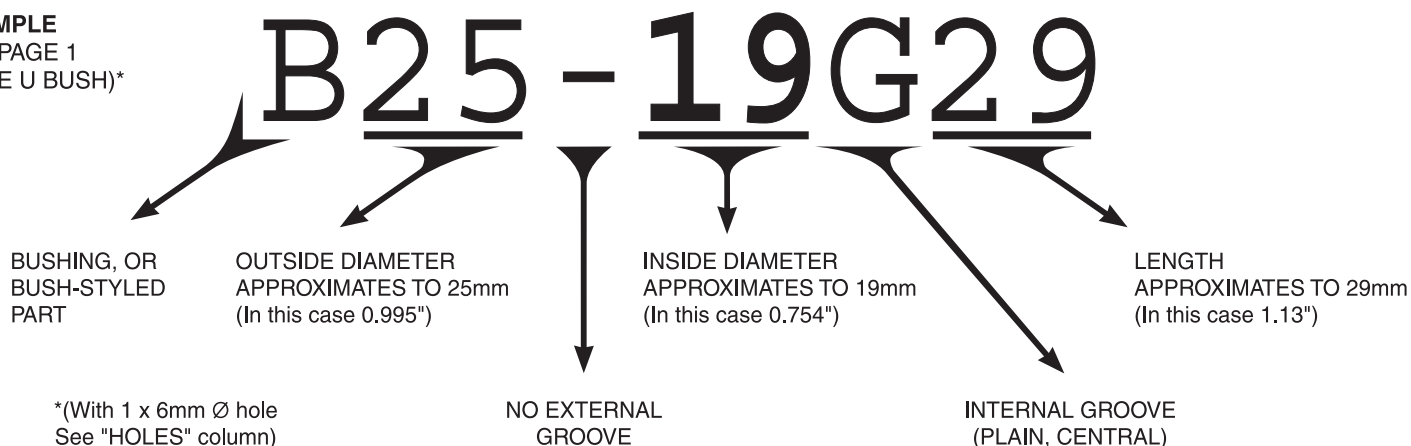
SYMBOL	DIMENSION
A	= MAJOR DIAMETER
B	= LENGTH
C	= END TO HOLE / GROOVE
D	= DIAMETER OF HOLE
E	= LENGTH BETWEEN HOLES / GROOVES
F	= FLANGE / HEAD DIAMETER
G	= END TO GREASE EXIT
H	= DIAMETER OF END HOLE / RECESS
I	= INSIDE DIAMETER
J	= DIAMETER OF GROOVE
K	= LENGTH OF POINT / TAPER
L	= END TO UNDER HEAD / FLANGE
M	= WIDTH OF GROOVE
N	= WIDTH OF FLANGE / HEAD
S	= LENGTH OF CHAMFER
W	= LENGTH OF STEP
Y	= MINOR DIAMETER



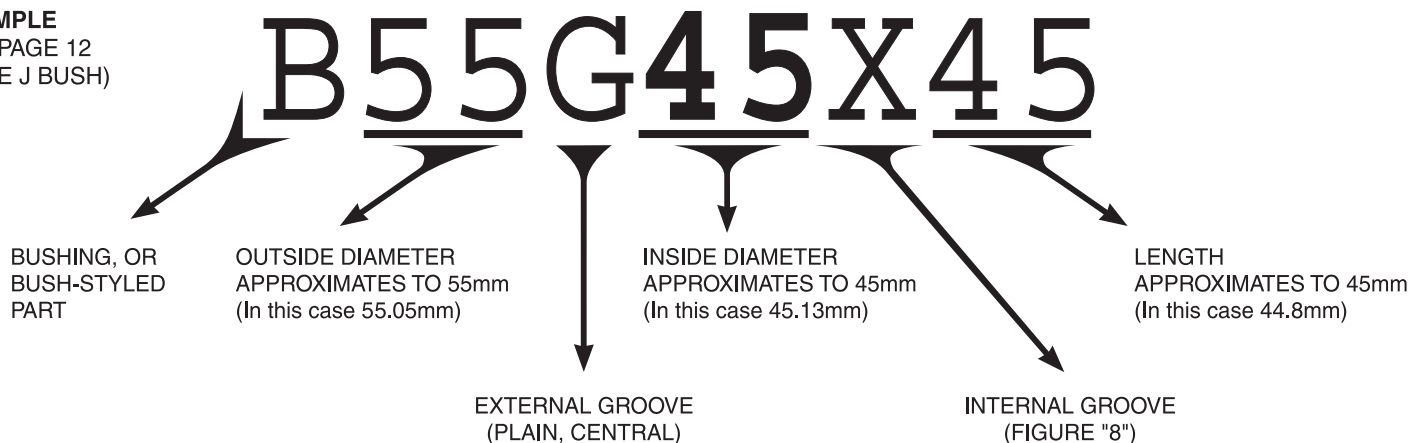
KEY to KSet Part Numbers - BUSHES

KSet Bush Part Numbers are based on an Identification System using Metric Size Approximation
Bushes are Designated O.D. by I.D. by Length

EXAMPLE
 SEE PAGE 1
 (TYPE U BUSH)*



EXAMPLE
 SEE PAGE 12
 (TYPE J BUSH)



EXAMPLE, ON PAGE 14: **B64F51-32** "F" DENOTES A FLANGE AT ONE END

TOLERANCES: **OUTSIDE DIAMETERS** ARE GENERALLY PRECISION GROUND TO $\pm 0.01\text{mm}$ OF DIAMETER SHOWN IN "OUTSIDE" COLUMN.
INSIDE DIAMETERS ARE GENERALLY PRECISION GROUND TO $\pm 0.013\text{mm}$ OF DIAMETER SHOWN IN "INSIDE" COLUMN.
 IN CASE OF VARIATION, PLEASE DISCUSS ACHIEVED DIAMETERS AT TIME OF ORDERING

HARDNESS: AVERAGE CASE HARDNESS IS **60 ROCKWELL C.** AVERAGE DEPTH: **0.9mm**
 CORE HARDNESS 30 to 40 ROCKWELL C.

MATERIAL: C 0.19% Si 0.30% Mn 1.5% V 0.12% S 0.03% P 0.03% TYPICAL
 TENSILE STRENGTH 635 MPa YIELD STRENGTH 420MPa ELONGATION 18% TYPICAL

Search: "Dial-a-Bush" - Find Bush by Size - "Dial-a-Bushing" - Find Bushing by Size - "Dial a Hardened Bush" - Find Hardened Bush by Size - "Dial a Steel Bush" - Find Imperial Bushing

Case Hardened Bushes - Precision Ground

KSet Part No.	Price EX GST	Outside	Inside	Length	Manufacture Notes	Locations
B26-19-20	\$22	1.002"	0.755"	0.79"	.10 kg	Goldfields Plain Bush
B26-19-24	\$20	1.002"	0.755"	0.94"	.10 kg	Task 2006 Plain Bush
B25-19G29	\$14	0.995"	0.754"	1.13"	for	John Deere Bush T42803
B26-19-32	\$22	1.002"	0.755"	1.25"	.06 kg	Task 2013 Plain Bush
B25-19G38	\$16	0.995"	0.754"	1.50"	for	John Deere Bushing T42806
B26-19-48	\$28	1.001"	0.754"	1.88"	.08 kg	John Deere Bushing U12271
B29-19-51	\$28	1.126"	0.756"	2.00"		Case Hardened 1214 Plain Bush
B32-19-32	\$20	1.252"	0.758"	1.25"		Task 2009 Plain Bush
B29-20-38	\$34	29.10mm	20.20mm	38.0mm		Task 2015 Plain Bush
B30-20-36	\$34	30.06mm	20.02mm	36.0mm		Task 2013 Plain Bush
B29-22-20	\$16	1.127"	0.880"	0.79"	.04 kg	\$ REDUCED \$ Plain Bush
B29-22-24	\$20	1.127"	0.880"	0.94"	.05 kg	\$ REDUCED \$ Plain Bush
B32-22-26	\$24	1.253"	0.877"	25.4mm	.09 kg	4 Only To clear
B33-23-25	\$27	1.269"	0.879"	25.1mm	.09 kg	Case 580K Stg D127507
B34-24-25	\$24	34.10mm	24.10mm	25.0mm	.09 kg	4 Only Suit 24mm Shaft

Suit 25mm Diameter Shaft:

B33-25G30	\$28	33.08mm	25.10mm	30.0mm	.08 kg	68721-66630 Int.Groove
B33-25G35	\$20	33.08mm	25.10mm	35.0mm	.08 kg	Suit Yanmar Int.Groove
B35-25-22	\$23	35.02mm	25.11mm	21.8mm		Task 2008 Plain Bush
B35-25-27	\$28	35.03mm	25.19mm	27.0mm		For IHI 404 324 502
B35-25-30	\$23	35.03mm	25.12mm	30.0mm		Plain Bush
B35-25X30	\$23	35.12mm	25.14mm	29.8mm	.08 kg	00024-00024 O/B F8
B35G25G31	\$24	35.08mm	25.15mm	31.0mm	for	John Deere Bushing R81854
B35-25-33	\$18	35.02mm	25.19mm	33.0mm		For IHI 404 324 501
B35-25G34	\$20	35.10mm	25.15mm	33.8mm		00021-00026 Int.Groove
B35-25X35	\$30	35.09mm	25.14mm	34.8mm		00024-00064 O/B F8
B35-25-40	\$22	35.03mm	25.12mm	40.0mm		Darwin Bearings Plain Bush
B35G25G40	\$22	35.08mm	25.14mm	40.0mm	.15 kg	TESK 2010 Greasable
B35G25G45	\$28	35.08mm	25.14mm	45.0mm	for	John Deere Bushing R72700
B36-25-33	\$26	36.05mm	25.12mm	33.0mm		O.S. TESK Plain Bush
B38G25G39	\$28	38.03mm	25.19mm	39.0mm		For IHI 075 233 321
B52-25-26	\$18	52.00mm	25.08mm	25.4mm		Bucket Boss Plain

Bushes for 1inch Diameter Shaft:

B32-26-16	\$21	1.250"	1.006"	0.63"	for	For Case G35361
B32-26-20	\$20	1.251"	1.006"	0.75"	.05 kg	Task 2003 Plain Bush
B32-26-26	\$22	1.251"	1.006"	1.00"	.06 kg	Bobcat Retrofit Plain Bush
B33-26-26	\$24	1.254"	1.003"	1.00"	.06 kg	Heavy Press Close Fit
B32-26-32	\$25	1.251"	1.006"	1.25"	.07 kg	Task 2005 Plain Bush
B32-26-38	\$26	1.251"	1.006"	1.50"	.09 kg	Task 2005 Plain Bush
B32-26-45	\$28	1.251"	1.008"	1.75"	for	Massey Ferguson Plain
B32F26-45	\$36	1.251"	1.004"	1.79"	.12 kg	Flange Bush MCC 2014
B32-26-51	\$34	1.251"	1.008"	2.00"		Task 2005 Plain Bush
B35-26-26	\$29	1.377"	1.005"	1.00"	.09 kg	Darwin LNG Plain Bush
B35-26-32	\$27	1.377"	1.005"	1.25"	.12 kg	Task 2005 Plain Bush
B35-26-38	\$32	1.377"	1.007"	1.50"	.13 kg	Task 2004 Plain Bush
B35G26G38	\$32	35.07mm	1.007"	38.0mm	.13 kg	John Deere Bushing R99444
B35-26-51	\$36	1.377"	1.007"	2.00"		Task 2015 Plain Bush
B36-26-25	\$18	1.395"	1.012"	1.00"		John Deere Bushing U10482
B37-26-16	\$20	1.442"	1.012"	0.62"		Plain Bushing
B38-26-26	\$32	1.502"	1.002"	1.00"	.07 kg	Universal Bearing Plain
B38-26-38	\$32	1.502"	1.007"	1.50"		Case Hardened Plain Bush
B38G26G50	\$41	1.502"	1.004"	1.97"	.24 kg	Task 2007 Greasable
B38-26-51	\$36	1.502"	1.002"	2.00"		Darwin Bearings Plain
B40-26-50	\$36	40.05mm	1.004"	1.97"		Global Marine Plain
B41-26-19	\$18	1.625"	1.000"	0.75"		Global Marine Plain

Dimensions shown are for the KSet Bush, not for nearby OEM numbers

DISCLAIMER

KSET Aftermarket pins and bushes are sold on their own Reputation to specifications discussed at point of sale or in this catalogue

It is the Purchaser's responsibility to measure the parts before fitting to machine, to ensure correct Interference and Clearance Fit. KSet accepts no responsibility for pin to bush clearance after fitting

No Warranty is given or implied as to Wear Life or Breakability of Shaft, Pins or Bushes



DRILLS - TAPS - DIES - BURRS
See Page 73

BUSHINGS

Quantity Discounts Available only upon request provided all outstanding invoices are settled within 7 Days

Discount for 10 of any line item \$3.00 ea
Discount for 20 of any line item \$4.00 ea
Discount for 30 of any line item \$5.00 ea
Discount for 40 of any line item \$6.00 ea

Pins and Bushes Shims and Seals Tools and Cutters

Minimum Product Order \$150
Prices subject to change without notice

Case Hardened Bushes - Precision Ground

KSet Part No.	Price EX GST	Outside	Inside	Length	Manufacture Notes	Locations
B36-28-26	\$20	36.04mm	28.02mm	25.4mm	.08 kg Sandvik TB40	2088 8408
B36-28-30	\$22	36.04mm	28.02mm	30.0mm	.10 kg Tesk 2004	Plain Bush
B36G28G39	\$26	36.04mm	28.02mm	39.5mm	.12 kg Sandvik TB60 TB40	59943148
B35-29-29	\$28	1.376"	1.130"	1.13"	.047 kg Tesk 2001	Plain Bush
B35-29-32	\$26	1.385"	1.128"	1.25"	Tesk 2012	Plain Bush
B35-29-38	\$26	1.376"	1.129"	1.50"	.062 kg Tesk 2012	Plain Bush
B35G29G50	\$20!	1.376"	1.131"	1.96"	\$ REDUCED \$	Greasable
B37-29-26	\$15!	1.440"	1.129"	1.00"	\$ REDUCED \$ 9 only	Plain
B38-29-16	\$22	1.516"	1.128"	0.62"	.08 kg Tesk 2012	Plain Bush
B38-29-25	\$22	1.504"	1.132"	1.00"	.10 kg Tesk 2004	Plain Bush
B38-29-35	\$22	1.502"	1.131"	1.37"	Tesk 2004	Plain Bush
B41-28-25	\$22	1.623"	1.132"	0.98"	Locomotive	Plain Bush
B41-29-25	\$22	1.629"	1.137"	0.98"	Locomotive	Plain Bush
B41-29-26	\$22	1.627"	1.129"	1.00"	Locomotive	Plain

Suit 30mm Diameter Shaft

B35-30-30	\$26	35.05mm	30.12mm	30.0mm	.064 kg Toyota	SDK8
B35-30-40	\$26	35.05mm	30.12mm	40.0mm	.085 kg 6802217	Bobcat320-Bush-F,I,J
B35G30G40	\$26	35.05mm	30.12mm	40.0mm	.08 kg Bobcat	Dakin Bucket
B35G30G45	\$28	35.05mm	30.12mm	45.0mm	.08 kg Bobcat S330	Bushing
B36-30-30	\$20	36.05mm	30.12mm	30.0mm	Tesk 2004	Plain Bush
B36-30-40	\$20	36.49mm	30.10mm	40.0mm	.10 kg Tesk 2009	Plain Bush
B38-30-20	\$22	38.05mm	30.10mm	20.0mm	.07 kg Tesk 2004	Plain Bush
B38-30-25	\$20	38.06mm	30.09mm	25.0mm	.09 kg Tesk 2011	Plain Bush
B38-30G30	\$22	38.05mm	30.10mm	30.0mm	.10 kg Kubota	68721-66770
B38G30G30	\$24	38.05mm	30.10mm	30.0mm	Tesk 2008	Greasable
B38-30-35	\$26	38.05mm	30.10mm	35.0mm	.12 kg Kubota	68721-66522
B38G30G35	\$27	38.05mm	30.11mm	35.0mm	Tesk 2007	Greasable
B38G30-36	\$22	38.02mm	30.11mm	35.6mm	.12 kg JCB	231/02904
B40G30G20	\$28	40.08mm	30.12mm	20.0mm	.10 kg Tesk 2012	Greasable
B40-30G22	\$27	40.09mm	30.14mm	22.0mm	.10 kg Takeuchi TB015	00021-30022
B40-30-30	\$27	40.08mm	30.11mm	30.0mm	.13 kg Tesk 2011	Plain Bush
B40-30G30	\$28	40.07mm	30.12mm	30.0mm	.13 kg Type U	Bush
B40G30G30	\$28	40.07mm	30.12mm	30.0mm	.125 kg IHI Mini Excacator	404 325 202
B40-30-33	\$20	40.05mm	30.17mm	33.0mm	IHI Mini Excacator	404 331 000
B40G30G35	\$32	40.05mm	30.12mm	35.0mm	.135 kg Bobcat320	Greasable
B40G30G40	\$33	40.05mm	30.11mm	39.7mm	.17 kg 6539270 Furukawa	311541-21130
B40-30x40	\$34	40.10mm	30.13mm	40.0mm	IHI Mini Excacator	404 331 000
B40G30G45	\$30	40.05mm	30.12mm	45.0mm	.18 kg TESK 2005	Greasable
B40-30-46	\$26	40.05mm	30.11mm	46.0mm	.20 kg IHI Mini Excacator	404 324 600
B40-30-50	\$32	40.05mm	30.12mm	50.0mm	.22 kg Tesk 2011	Plain Bush
B42G30G40	\$33	42.05mm	30.11mm	39.7mm	.15 kg O.S. Tesk	2010
B44G30G30	\$26!	44.45mm	30.15mm	30.0mm	\$ REDUCED \$ 5 Only	Greasable
B47G30G31	\$25!	47.50mm	30.23mm	30.0mm	\$ REDUCED \$ 23 Only	Greasable

Bushes to Suit 1.25" Diameter Shaft

B38-32-18	\$22	1.502"	1.257"	0.70"	.05 kg Case Lift Cyl	30634
B38-32-22	\$18	1.501"	1.256"	0.88"	.08 kg Massey Ferguson	Plain
B38G32G25	\$30	1.502"	1.252"	1.00"	.07 kg Tesk 2005	Greasable
B38-32-27	\$28	1.501"	1.258"	1.06"	.07 kg Massey Ferguson	Plain
B38-32-32	\$28	1.502"	1.256"	1.25"	.09 kg Tesk 2000	Plain
B38-32-37	\$29	1.502"	1.256"	1.50"	.11 kg Tesk 2000	Plain
B38G32G38	\$31	1.502"	1.253"	1.50"	.10 kg Tesk 2005	Greasable
B38G32G44	\$34	1.501"	1.256"	1.74"	.12 kg Tesk 2009	Greasable
B38G32G50	\$40	1.501"	1.258"	1.96"	.14 kg Tesk 2000	Greasable
B38G32G63	\$46	1.502"	1.258"	2.50"	.18 kg Tesk 2012	Greasable

Dimensions shown are for the KSet Bush, not for nearby OEM numbers

5.0 mm Jobber Drill Bit \$ 4.00 ea
Code TL-C9LM050 plus GST

Pack of Six \$16.00
Code: TL6-C9LM050



6.0 mm Jobber Drill Bit \$ 5.00 ea
Code TL-C9LM060 plus GST

Pack of Six \$23.00
Code: TL6-C9LM060

BUSHINGS

Quantity Discounts Available only upon request provided all outstanding invoices are settled within 7 Days

Discount for 10 of any line item \$3.00 ea
Discount for 20 of any line item \$4.00 ea
Discount for 30 of any line item \$5.00 ea
Discount for 40 of any line item \$6.00 ea

Overnight Delivery Darwin Bearings

Bushes and Pins Seals and Shims Cutters and Tools

Minimum Product Order \$150
Prices subject to change without notice

Case Hardened Bushes - Precision Ground

KSet Part No.	Price EX GST	Outside	Inside	Length		Manufacture Notes	Locations
B40-32-26	\$27	40.03mm	1.251"	0.99"	.09 kg	JOY B40-31-25	01758059-0061
B40-32-32	\$27	40.03mm	1.254"	1.25"	.11 kg	TESK 2009	Plain Bush
B40-32-40	\$29	40.03mm	1.254"	1.58"	.15 kg	Attachment	Plain Bush
B40-32-50	\$34	40.03mm	1.254"	1.97"	.18 kg	Cat247B	Skid Steer Loader
B40-32G50	\$34	40.01mm	1.260"	1.95"	.18 kg	Bobcat	Caterpillar 159-5756
B40G32G50	\$34	40.02mm	1.258"	1.97"	.18 kg	Cat247B	Greasable
B42-32-12	\$24	1.6275"	1.253"	0.47"	.05 kg	Extra Hard Bush	64 HRC
B42-32-32	\$28	1.627"	1.255"	1.25"	.13 kg	For Case 580	D33827
B42-32-38	\$32	1.627"	1.255"	1.50"	.16 kg	Toolmaker Bushing	Plain
B42-32-48	\$40	1.627"	1.256"	1.87"	.20 kg	TESK 2004	Roller Bush
B42G32G51	\$42	1.627"	1.256"	2.00"	.20 kg	TESK 2012	Greasable
B44-32-32	\$35	1.752"	1.256"	1.25"	.19 kg	TESK 2009	Plain Bush
B44-32-51	\$37	1.752"	1.257"	2.00"	.30 kg	TESK 2006	Plain Bush
B44G32G51	\$41	1.752"	1.256"	2.00"	.30 kg	TESK 2008	Greasable
B44-32G76	\$44!	1.751"	1.256"	3.00"	.45 kg	\$ REDUCED \$	Imperial Bush
B51-32-26	\$30!	2.002"	1.259"	1.00"	.24 kg	\$ REDUCED \$	Heavy Wall
B51-32-51	\$46	2.001"	1.258"	2.00"	.49 kg	TESK	Heavy Wall Bush
B55G32G66	\$39!	55.07mm	1.259"	66.0mm		John Deere	R81853
B45-33-44	\$20!	44.90mm	32.80mm	44.0mm	.26 kg	\$ REDUCED \$	2013 Bushing
B45-33-45	\$37	45.00mm	33.00mm	44.0mm	.26 kg	Special Bushing	2013
B46-34-32	\$20	45.53mm	34.15mm	32.0mm	.26 kg	For 34 Diameter Pin	Chain Bush

Bushes for 35mm Diameter Shaft:

B40-35-25	\$29	40.05mm	35.10mm	25.0mm	.06 kg	Bobcat	331-Bush-H
B40-35-30	\$20	40.03mm	35.10mm	30.0mm	.07 kg	Toyota	90387-35003-71
B40-36-30	\$15!	40.03mm	35.36mm	30.0mm	.07 kg	Large Clearance	Plain Bush
B40-35-50	\$30	40.01mm	35.11mm	50.0mm	.12 kg	Toyota 35DK8	331-Bush-J
B40G35G50	\$32	40.01mm	35.11mm	50.0mm	.12 kg	Bobcat	331-Bush-HR
B45-35G29	\$24	45.10mm	35.17mm	29.2mm	.14 kg	IHI	404 323 109
B45-35-30	\$25	45.05mm	35.11mm	30.0mm	.15 kg	TESK 2005	Chain Bearing Bush
B45G35G30	\$28	45.05mm	35.12mm	30.0mm	.15 kg	Bobcat &	IHI 404 330 200
B45-35G35	\$28	45.06mm	35.13mm	35.0mm	.17 kg	Komatsu	PC20-Bush-H,I,J,K
B45-35-35	\$28	45.05mm	35.11mm	35.0mm	.18 kg	TESK 2008	Plain Bush
B45G35G35	\$30	45.05mm	35.10mm	35.0mm	.17 kg	Komatsu	PC20-HR
B45G35-35	\$24	45.05mm	35.11mm	35.0mm	.17 kg	No Internal Groove	
B45-35X35	\$34	45.04mm	35.22mm	34.9mm	.17 kg	Kubota	68741-66630
B45-35G38	\$30	45.05mm	35.10mm	38.0mm	.19 kg	Furukawa	550811-11190
B45G35G40	\$32	45.05mm	35.10mm	40.0mm	.19 kg	Furukawa	550901-12240
B45G35G44	\$32	45.06mm	35.35mm	44.0mm	.20 kg	John Deere	H149680
B45G35G45	\$33	45.06mm	35.12mm	45.0mm	.22 kg	Excavator	19000-12002
B45-35-49	\$34	45.05mm	35.11mm	49.0mm	.24 kg	TESK 2009	Plain Bush
B45-35-50	\$44	45.04mm	35.05mm	50.0mm	.25 kg	High Tensile	EN36A
B45G35G50	\$38	45.05mm	35.11mm	50.0mm	.25 kg	Excavator	01009-01012
B47G35G45	\$36	47.05mm	35.15mm	45.0mm	.25 kg	O.S. TESK	2012
B50G35G55	\$36!	50.05mm	35.15mm	55.0mm	.38 kg	\$ Reduced \$	O.S. TESK 2012
B53G35G45	\$64	53.12mm	35.10mm	45.0mm	.43 kg	Atlas Copco	9128734300

Bushes for 1.5 inch Diameter Shaft:

B44-38-25	\$31	1.751"	1.506"	1.00"	.08 kg	TESK 2003	Plain Bush
B44-38-29	\$24	1.751"	1.508"	1.13"	.09 kg	Massey Ferguson	846002M1
B44-38-32	\$30	1.751"	1.506"	1.25"		TESK 2003	Plain Bush
B44G38G32	\$32	1.751"	1.506"	1.25"	.11 kg	TESK	2011
B44-38-38	\$34	1.751"	1.507"	1.50"		TESK 2005	Plain Bush
B44G38G38	\$36	1.751"	1.507"	1.50"	.13 kg	TESK Imperial Bush	2011
B44-38-45	\$30	1.751"	1.508"	1.75"		TESK 2007	Plain Bush
B44G38G45	\$30!	1.751"	1.504"	1.75"	.16 kg	\$ Reduced \$	Greasable Bush
B44-38-50	\$32	1.752"	1.503"	1.97"	.17 kg	TESK 2006	Plain Bush
B44G38G50	\$36	1.753"	1.504"	1.97"	.17 kg	TESK 2002	Greasable Bush
B44-38-51	\$31	1.750"	1.500"	2.00"	.17 kg	Close Tolerance	Plain Bush
B45-38-22	\$26	1.774"	1.500"	0.87"	No Disc	John Deere	H145069
B45-38-32	\$29	1.775"	1.510"	1.25"	.12 kg	O.S. TESK 2008	Plain Bush

Dimensions shown are for the KSet Bush, not for nearby OEM numbers

5.0 mm Cobalt Jobber Drill Bit
Carded
Code TL-9LM050Co
\$ 7.00 ea
plus GST

Pack of Six \$32.00
Code:
TL6-9LM050Co



6.0 mm Cobalt Jobber Drill Bit
Carded
Code TL-9LM060Co
\$ 9.00 ea
plus GST

Pack of Six \$42.00
Code: TL6-9LM060Co

BUSHINGS

Quantity Discounts Available only upon request provided all outstanding invoices are settled within 7 Days

Discount for 10 of any line item \$3.00 ea
Discount for 20 of any line item \$4.00 ea
Discount for 30 of any line item \$5.00 ea
Discount for 40 of any line item \$6.00 ea

Pins and Bushes Shims and Seals Tools and Cutters

Minimum Product Order \$150
Prices subject to change without notice

Case Hardened Bushes - Precision Ground

KSet Part No.	Price EX GST	Outside	Inside	Length	Weight	Manufacture Notes	Locations
B46-38-62	\$ 42 !	46.05mm	1.506"	2.44"	.27 kg	\$ Reduced \$	Plain Bush
B46-38-76	\$ 62	46.05mm	1.506"	3.00"	.32 kg	O.S. TESK 2008	Plain Bush
B47-38G45	\$ 68	47.02mm	38.08mm	44.8mm	.21 kg	Sandvik	3176 7714 00
B48-38-22	\$ 22	1.876"	1.502"	0.87"	.12 kg	TESK 2014	Plain Bush
B48-38-25	\$ 28	1.876"	1.509"	1.00"	.12 kg	CASE 455C	D31140
B48-38-29	\$ 22	1.876"	1.508"	1.13"	.14 kg	Case 580	D30932, D37763
B48-38-32	\$ 24	1.876"	1.509"	1.25"	.17 kg	CASE	D30933
B48G38G32	\$ 32	1.876"	1.509"	1.25"	.15 kg	John Deere	U10616
B48G38G33	\$ 35	48.05mm	38.15mm	33.00mm		Yanmar VIO40	Metric
B48-38-37	\$ 26	1.877"	1.506"	1.48"	.19 kg	TESK 2009	Plain Bush
B48G38G38	\$ 31	1.877"	1.508"	1.50"	.18 kg	Massey Ferguson	Greasable
B48-38-39	\$ 28	1.876"	1.509"	1.53"	.20 kg	Case 580	D30929 & D49429
B48G38G40	\$ 35	48.05mm	38.15mm	40.00mm	.21 kg	TESK 2005	Metric
B48G38G45	\$ 36	48.05mm	38.15mm	45.00mm	.24 kg	Yanmar VIO20	Metric
B48-37-45	\$ 24	1.870"	1.490"	1.75"	.23 kg	\$ Reduced \$	Scatrak 5717692
B48G38G49	\$ 32	1.878"	1.507"	1.93"	.24 kg	TESK 2009	Greasable
B48-38G50	\$ 36	48.05mm	38.15mm	50.0mm		Tesk 2011	Metric
B48-38-51	\$ 28	1.877"	1.506"	2.00"	.26 kg	TESK 2009	Plain Bush
B48-38G55	\$ 26	48.05mm	38.15mm	55.0mm		Yanmar VIO20	Metric
B48G38G55	\$ 33	48.05mm	38.15mm	55.0mm	.29 kg	TESK 2011	Metric
B48-38-70	\$ 46	1.876"	1.512"	2.75"	.31 kg	Case	D30931
B50G38G49	\$ 32	50.07mm	38.14mm	49.00mm	.30 kg	TESK 2008	Metric
B50-38-57	\$ 30	50.06mm	1.500"	2.24"		John Deere 670B 672BH145104	
B51-38-26	\$ 28	2.002"	1.506"	1.00"	.17 kg	TESK 2000	Plain Bush
B51G38-29	\$ 18 !	2.0025"	1.507"	1.13"	.17 kg	\$ Reduced \$	Caterpillar 7K9592
B51-38-31	\$ 32	2.002"	1.509"	1.24"		TESK 2007	Plain Bush
B51G38G32	\$ 34	2.002"	1.508"	1.25"		TESK 2000	Greasable
B51-38-35	\$ 32	2.002"	1.507"	1.37"	.24kg	Length = 34mm	Plain Bush
B51G38G38	\$ 24 !	1.990"	1.497"	1.50"		\$ Reduced \$	John Deere T41963
B51G39G38	\$ 32	2.002"	1.509"	1.50"	.25kg	TESK 2003	Greasable
B51-38-39	\$ 30	2.002"	1.508"	1.50"		Caterpillar	5D4541
B51G38G44	\$ 15	1.998"	1.518"	1.75"	.28kg	John Deere	T33536
B51-38-45	\$ 28	2.002"	1.508"	1.75"	.31kg	TESK 2008	Plain Bush
B51G38G45	\$ 30	2.002"	1.508"	1.75"	.30kg	TESK 2003	Greasable
B51G38-47	\$ 30	2.003"	1.507"	1.86"	.32kg	Caterpillar 7K9593	4 x 6 holes
B51-38-51	\$ 34	2.002"	1.510"	2.00"	.35kg	TESK 2009	Plain Bush
B51G38G51	\$ 41	2.002"	1.510"	2.00"	.34kg	TESK 2000	Greasable
B51G38G60	\$ 46	2.002"	1.505"	2.37"	.40kg	TESK 2000	Greasable
B51-38-63	\$ 24 !	1.992"	1.520"	2.50"	.42kg	\$ Reduced \$	John Deere T101148
B51G38G63	\$ 46	2.002"	1.510"	2.48"	.42kg	TESK 2007	Greasable
B51G38G70	\$ 59	2.002"	1.506"	2.75"		TESK 2011	Greasable
B51G38G76	\$ 58	2.002"	1.508"	3.00"	.51 kg	TESK 2004	Greasable
B51G38G102	\$ 64	2.002"	1.509"	4.00"	.69 kg	TESK 2004	Greasable
B52G38G38	\$ 30	2.063"	1.509"	1.50"		O.S. TESK 2007	Greasable
B54-38-25	\$ 34	2.126"	1.504"	1.00"	.23 kg	TESK 2010	Plain Bush
B54-38-49	\$ 46	2.126"	1.504"	1.94"	.45 kg	TESK 2010	Plain Bush
B54-38-53	\$ 38	2.128"	1.501"	2.08"	.50kg	Eimco New A2U913-194145	
B54-38-54	\$ 50	2.125"	1.501"	2.13"	.50kg	Eimco Old A2U913-194145	
B54-38H82	\$ 50	2.127"	1.504"	3.23"		Eimco 2 x 16 hole A2U913-194264	
B54-38H90	\$ 50	2.127"	1.504"	3.54"		Eimco 2 x 16 hole A2U913-194197	
B55G38G51	\$ 30	55.09mm	1.509"	2.01"		Plain Bush	R82942
B57G38G43	\$ 20 !	2.243"	1.508"	1.69"		\$ Reduced \$	T126936, T47070
B57-38-51	\$ 30	2.252"	1.508"	2.00"	.58kg	TESK 2009	Plain Bush
B60-37-37	\$ 28	2.365"	1.451"	1.46"		John Deere	T81452
B76-38-44	\$ 36	3.000"	1.500"	1.75"		Bucket Boss	52HRC

Dimensions shown are for the KSet Bush, not for nearby OEM numbers

Grease for Hardened Bushes Renolit XTB2 450g

Long life multipurpose grease that is designed for extreme bearing applications. Suits a variety of automotive applications, including wheel bearing and general chassis lubrication

Product Code : GR-XTB2 \$10 ea + GST



Grease for Pin Steel
Grease for Excavator Bushes
Maitland Hunter Valley NSW

BUSHINGS

Quantity Discounts Available only upon request provided all outstanding invoices are settled within 7 Days

Discount for 10 or more of any item \$ 3.00 ea
Discount for 20 or more of any item \$ 5.00 ea
Discount for 30 or more of any item \$ 6.00 ea

Bushes and Pins Seals and Shims Cutters and Tools

Minimum Product Order \$150
Prices subject to change without notice

Case Hardened Bushes - Precision Ground

Bushes for 40mm Diameter Shaft:

KSet Part No.	Price EX GST	Outside	Inside	Length	Manufacture Notes	Locations
B44-40-25	\$ 28	44.05mm	40.05mm	25.0 mm	Mount Isa	Thin Wall Bush
B44-40-30	\$ 29	44.05mm	40.05mm	30.0 mm	Mount Isa	Thin Wall Bush
B45-40-38	\$ 35	45.05mm	40.10mm	38.0 mm	TESK 2012	Plain Bush
B45-40-47	\$ 40	45.05mm	40.10mm	47.0 mm	TESK 2004	Plain Bush
B48-40-20	\$ 29	48.04mm	40.05mm	20.0 mm	Sandvik	5502 3390
B48-40-30	\$ 29	48.03mm	40.09mm	30.0 mm	Sandvik	4985 2501
B48-40-31	\$ 29	48.03mm	40.04mm	30.0 mm	Sandvik	4536 8998
B48-40-38	\$ 26	1.875"	40.20mm	38.1 mm	Case580	G108507
B48G40G60	\$ 54	48.05mm	40.12mm	60.0 mm	Kobelco 2004	Greasable
B50-40G24	\$ 30	50.10mm	40.17mm	24.26mm	IHI35J-Bush-HL	404 323 101
B50-40-28	\$ 32	50.03mm	40.20mm	28.0 mm	CASE Loader Bkt	D129264
B50G40G30	\$ 32	50.05mm	40.10mm	30.0 mm	Hydraulic cylinder bush,	Greasable
B50-40-32	\$ 29	50.00mm	40.22mm	32.0 mm	CASE 580K	E172051
B50-40G32	\$ 29	50.03mm	40.16mm	31.9 mm	Kubota KX71	68741-66770
B50G40G34	\$ 34	50.05mm	40.11mm	34.6 mm	Furukawa	353541-21130
B50-40-35	\$ 30	50.03mm	40.18mm	34.8 mm	Case 580 SLE	Plain Bush
B50-40G39	\$ 34	50.10mm	40.18mm	39.2 mm	IHI	35J-BUSH-H,I,J,K,G
B50-40-39	\$ 32	50.05mm	40.17mm	39.5 mm	Kubota KX41	68741-6677-0
B50-40-40	\$ 35	50.05mm	40.29mm	40.0 mm	John Deere	R72579
B50G40G40	\$ 39	50.05mm	40.11mm	40.0 mm	IHI35J-Bush-HR	075-223-221
B50G40G45	\$ 39	50.05mm	40.12mm	45.0 mm	IHI35J	Takeuchi 075 224 021
B50G40X45	\$ 40	50.05mm	40.15mm	45.0 mm	075 223 923	OF8/BF8
B50-40-50	\$ 42	50.05mm	40.17mm	50.0 mm	Kubota KX71	68351-6776-0
B50G40G50	\$ 42	50.05mm	40.17mm	50.0 mm	Kubota KX71	68351-6777-0
B50G40G60	\$ 44	50.10mm	40.17mm	60.0 mm	Hydraulic cylinder bush,	Greasable
B50G40G62	\$ 44	50.09mm	40.12mm	62.0 mm	John Deere	R81488
B50G40G67	\$ 47	50.09mm	40.24mm	67.0 mm	John Deere	T100240
B50-40-70	\$ 42	50.01mm	40.23mm	70.0 mm	CASE 580K	D129240
B50G40G80	\$ 45	50.10mm	40.17mm	80.0 mm	Greasable	Bushing
B50-40G100	\$ 60	50.10mm	40.25mm	100.0mm	John Deere	T76638
B51-40-38	\$ 35	2.002"	40.17mm	38.0 mm	O.S. TESK 2007	Plain Bush
B51G40G50	\$ 40	2.002"	40.16mm	50.0 mm	Greasable	Bushing
B52-40-50	\$ 48	52.07mm	40.14mm	50.0 mm	O.S. TESK 2009	Plain Bush
B53-40-38	\$ 38	53.08mm	40.25mm	38.1 mm	John Deere	9R0111
B53G40G50	\$ 45	53.08mm	40.16mm	50.0 mm	O.S. TESK 2011	Greasable
B55-40-30	\$ 30	55.01mm	40.22mm	30.0 mm	Case 580SLE	D136570
B55G40X45	\$ 44	55.06mm	40.16mm	45.0 mm	Task 2004	Greasable Bush
B55G40G65	\$ 48	55.07mm	40.22mm	65.0 mm	John Deere 315	R81849
B56-40-50	\$ 47	56.05mm	40.12mm	50.0 mm	TESK 2006	Plain Bush
B57-40-23	\$ 34	56.56mm	40.11mm	22.7 mm	Case 580K	G108526
B57-40-24	\$ 35	56.68mm	40.21mm	24.0 mm	Case	542668
B60-40-32	\$ 42 !	60.10mm	40.15mm	32.0 mm	TESK Heavy Wall	2013
B60-40-45	\$ 42 !	60.10mm	40.15mm	45.0 mm	TESK Heavy Wall	2010
B60F40-43	\$ 50	60.**mm	40.**mm	43.0 mm	Flange Bush	
B60G40G50	\$ 59	60.08mm	40.17mm	50.0 mm	TESK Heavy Wall	2013
B60G40G60	\$ 62	60.08mm	40.16mm	60.0 mm	TESK Heavy Wall	2009
B70G40G120	\$ 120	70.00mm	40.10mm	120.0mm	TESK Heavy Wall	2009

Bushes for 1 3/4" Diameter Shaft:

B51-44-38	\$ 39	2.002"	1.759"	1.50"	Massey Ferguson	Plain Bush
B51G44G44	\$ 40	2.001"	1.754"	1.75"	Hydraulic cylinder bush,	Greasable
B51-44-51	\$ 48	2.002"	1.756"	2.00"	TESK 2011	Plain Bush
B51G44G51	\$ 48	2.002"	1.756"	2.00"	Hydraulic cylinder bush,	Greasable
B54-44-22	\$ 25	2.126"	1.758"	0.88"	Case D33047, D46405,	G34845
B54-44-26	\$ 25	2.125"	1.759"	1.01"	Case	D34340
B54-44-29	\$ 24	2.125"	1.760"	1.12"	CASE 455C	D35071
B54-44-30	\$ 22 !	2.125"	1.757"	1.19"	CASE 580K	D94018

Dimensions shown are for the KSet Bush, not for nearby OEM numbers

6.8mm Jobber Drill Bit HSS
Titanium Nitride Coated \$ 5.00 ea
135 degrees split point

Code: TL-9LM068

6 Pack
Jobber Drills
\$ 22.00 / 6

Code:
TL6-9LM068

Use For
8mm x 1.25 Tap



TAP - High Speed Steel \$12.00
8mm x 1.25 Intermediate Plus GST
Code: TL-CMCHI080

6 Pack
TAPS - HSS \$ 64.00 / 6
8mm x 1.25 Intermediate
Code: TL6-CMCHI080

BUSHINGS

Quantity Discounts Available only upon request provided all outstanding invoices are settled within 7 Days

Discount for 10 of any line item \$3.00 ea
Discount for 20 of any line item \$5.00 ea
Discount for 30 of any line item \$6.00 ea

Pins and Bushes Shims and Seals Tools and Cutters

Minimum Product Order \$150
Prices subject to change without notice

Case Hardened Bushes - Precision Ground

KSet Part No.	Price EX GST	Outside	Inside	Length		Manufacture Notes	Locations
B54-44-37	\$41	2.126"	1.753"	1.50"	.27 kg	TESK	2004
B54-44-38	\$17	2.115"	1.750"	1.48"	No Discount	John Deere Bushing	U43636
B54-44-39	\$32	2.125"	1.760"	1.50"	.27 kg	Case 455C	D34354
B54G44G38	\$43	2.126"	1.754"	1.50"	.22 kg	Hydraulic cylinder bush,	Greasable
B54G44G44	\$36	2.126"	1.754"	1.75"	.25kg	Hydraulic cylinder bush,	Greasable
B54G44G51	\$22	2.118"	1.765"	2.00"	.28 kg	John Deere 670B,672B	T42080
B54G44G52	\$46	2.126"	1.753"	2.00"	.28 kg	TESK 2005	Greasable
B54-44-58	\$38	2.126"	1.759"	2.25"	.30 kg	Case	D42788
B55G44G45	\$35	55.07mm	1.761"	1.77"		John Deere Bushing	H145630
B55G44G66	\$48	55.07mm	1.761"	66.0mm	.41 kg	John Deere 670B,672B	R89940
B57-44-19	\$18	2.251"	1.761"	0.75"		Case	D40243
B57-44-26	\$33	2.250"	1.760"	1.00"	.20 kg	Case 480B Ft Stg Axle	D43940
B57-44-27	\$16	2.242"	1.770"	1.06"	No Discount	John Deere Bushing	T159279
B57-44-28	\$22	2.251"	1.759"	1.10"	.22 kg	Case	D127172, 107124A1
B57-44-29	\$17	2.243"	1.765"	1.12"	No Discount	John Deere Bushing	U10481
B57-44-30	\$30	2.250"	1.760"	1.14"	.24 kg	Case	107124A1
B57-44-32	\$30	2.251"	1.761"	1.25"	.25 kg	John Deere T140669	Case D37495
B57-44-33	\$20	2.243"	1.760"	1.26"	.25 kg	John Deere	T25898
B57-44-34	\$30	2.251"	1.759"	1.36"	.25 kg	Case 580 SLE	Bushing
B57-44G35	\$32	2.253"	1.757"	1.38"	.25 kg	CAT950-Bush-Stg	7J9688
B57-44-36	\$30	2.251"	1.757"	1.39"	.25 kg	Caterpillar	7K9589
B57G44G38	\$24	2.240"	1.748"	1.50"		John Deere Grader	T41976
B57G45G38	\$24	2.243"	1.765"	1.50"		John Deere Bushing	U16070
B57-44-39	\$36	2.252"	1.756"	1.50"	.30 kg	Case	D50146
B57G44G39	\$40	2.252"	1.756"	1.50"	.30 kg	Geasable Bush	2016
B57-44-42	\$36	2.251"	1.760"	1.65"	.34 kg	Case	D55626
B57-44-43	\$28	2.240"	1.767"	1.70"		John Deere	T34301
B57-44-44	\$25	2.252"	1.756"	1.75"	.35 kg	TESK 2004	Plain Bush
B57-44-45	\$28	2.243"	1.760"	1.77"		John Deere Bushing	T25875
B57G44G45	\$42	2.251"	1.756"	1.75"	.36 kg	Hydraulic cylinder bush,	Greasable
B57G44-46	\$28	2.243"	1.770"	1.81"		John Deere Bushing	U16017
B57G44G46	\$28	2.240"	1.765"	1.81"	.36 kg	John Deere	T34414
B57-44-50	\$28	2.250"	1.765"	1.97"		TESK 2004	Plain Bush
B57-44-51	\$36	2.252"	1.756"	2.00"	.40 kg	CAT 953	Plain Bush
B57G44-52	\$30	2.250"	1.760"	2.06"		Off-set Groove 2:5:12	D129061
B57-44-56	\$15	2.242"	1.770"	2.20"		John Deere Bushing	T113755
B57G44G57	\$42	2.252"	1.756"	2.25"	.44 kg	Hydraulic cylinder bush	Greasable
B57G44-59	\$32	2.251"	1.758"	2.34"	T	CAT-950-Bush-J	7K0085
B57G44G60	\$46	2.251"	1.755"	2.37"	.46 kg	Hydraulic cylinder bush,	Greasable
B57-44-60	\$48	2.252"	1.756"	2.37"	.48 kg	TESK 2009	Plain Bush
B57G44G63	\$46	2.251"	1.757"	2.46"	.49 kg	Caterpillar	2K4504
B57-44-70	\$30	2.250"	1.760"	2.75"	.53 kg	Case	D121845
B57G44G70	\$58	2.252"	1.756"	2.75"	.53 kg	TESK 2013	Greasable
B57G44G76	\$64	2.252"	1.756"	3.00"	.58 kg	TESK 2011	Greasable
B57-44-80	\$58	2.258"	1.753"	3.13"	.64 kg	Caterpillar	8J6535
B57G44G92	\$51	2.243"	1.765"	3.62"		John Deere 670B 672B	T59506
B57-44-94	\$51	2.250"	1.756"	3.70"		Case D127168 580SK-Bush-J-Old	
B57G44G94	\$49	2.251"	1.756"	3.70"		TESK 2004	Greasable
B57T44-104	\$68	2.250"	1.755"	4.10"	.79 kg	Case	580SK-Bush-J new
B57-44G125	\$60	2.251"	1.756"	4.92"		Case	580SK-Bush-J extra
B57G44G145	\$60	2.240"	1.759"	5.71"		J Deere T121987,T126201,T105930	
B60-44-51	\$44	2.376"	1.756"	2.00"	.51 kg	TESK 2006	Plain Bush
B64-44-51	\$58	2.502"	1.756"	2.00"	.66 kg	TESK 2005	Plain Bush
B64-44-63	\$63	2.502"	1.758"	2.50"		TESK 2003	Plain Bush
B64G44G63	\$58	2.502"	1.758"	2.50"	.77 kg	Hydraulic cylinder bush	Greasable
B64G44G76	\$58	2.502"	1.756"	3.00"		Hydraulic cylinder bush	Greasable

8.5mm Jobber Drill Bit HSS
Titanium Nitride Coated
135 degrees split point
\$ 9.00 ea plus GST
Code: TL-C9LM085

6 Pack
Jobber Drills
\$ 42.00 / 6
Code:
TL6-C9LM085

Use For Tap
10mm x 1.5



TAP - High Speed Steel \$21.00
10mm x 1.5 Intermediate Plus GST
Code: TL-CMCHI100

6 Pack
TAPS - HSS \$ 94.00 / 6
10mm x 1.5 Intermediate
Code: TL6-CMCHI100

BUSHINGS

Quantity **Discounts Available** only upon request provided all outstanding invoices are settled within 7 Days

Discount for **10** of any line item **\$3 ea**
Discount for **20** of any line item **\$5 ea**
Discount for **30** of any line item **\$6 ea**

Pins and Bushes Shims and Seals

Tools and Cutters

Minimum Product Order \$150
Prices subject to change without notice

Case Hardened Bushes - Precision Ground

Suit 45mm Diameter Shaft

KSet Part No.	Price EX GST	Outside	Inside	Length	Manufacture Notes	Locations
B50G45G45	\$34 !	50.07mm	45.10mm	45.0mm .13 kg	\$ REDUCED \$	Plain Bush
B50-45X45	\$ 48	50.05mm	45.10mm	45.0mm .13 kg	Atlas Copco 3177 0074 00 BF8	
B50-45-56	\$ 42	50.07mm	45.10mm	56.0mm .17 kg	TESK 2009	Plain Bush
B50-45-57	\$ 45	49.83mm	45.09mm	57.0mm .17 kg	John Deere T140211,T69352	
B55G45G25	\$ 33	55.05mm	45.15mm	25.0mm .15 kg	TESK 2012	Greasable Bush
B55-45-30	\$ 32	55.05mm	45.15mm	30.0mm .19 kg	Kubota KX161-3SS	Plain Bush
B55-45-35	\$30 !	55.05mm	45.15mm	35.0mm .20 kg	\$ REDUCED \$	Plain Bush
B55G45G35	\$ 35	55.05mm	45.16mm	35.0mm .20 kg	TESK 2004	Greasable Bush
B55-45-36	\$ 34	55.07mm	45.15mm	36.0mm .23 kg	PY12B 010 09P1	SK045-Bush-HL
B55-45X36	\$ 48	55.05mm	45.13mm	44.8mm .22 kg	Kubota KX161-3SS-Bush-HL	BF8
B55G45G39	\$ 37	55.07mm	45.15mm	38.8mm .23 kg	Yanmar	VIO 50-Bush-HL
B55-45-40	\$ 35	55.11mm	45.28mm	40.0mm .25 kg	John Deere T76639	
B55G45G40	\$ 41	55.05mm	45.13mm	40.0mm .24 kg	Yanmar	VIO 50-Bush-G
B55-45-41	\$ 35	55.10mm	45.15mm	40.0mm .25 kg	TESK 2004	Plain Bush
B55F45-42	\$ 25	55.03mm	45.15mm	42.0mm	Massey Ferguson 3501770 M2	
B55G45G44	\$38 !	55.05mm	45.18mm	44.0mm .26 kg	\$ REDUCED \$	Greasable Bush
B55-45G45	\$ 39	55.06mm	45.13mm	44.8mm .27 kg	01743-10405	PC45-1-D,E KY045-H
B55-45X45	\$ 50	55.05mm	45.13mm	44.8mm .27 kg	Kubota KX045-Bush-HL	BF8
B55G45G45	\$ 45	55.07mm	45.13mm	44.8mm .26 kg	19000-46502	07144-10405
B55G45X45	\$ 52	55.05mm	45.13mm	44.8mm .27 kg	Komatsu	20T-70-71870
B55-45X46	\$ 50	55.05mm	45.13mm	45.0mm .27 kg	Komatsu	20T-70-71880 O/BF8
B55G45G50	\$ 50	55.05mm	45.13mm	50.0mm .30 kg	Yanmar	VIO 50-Bush-HR
B55G45X50	\$ 52	55.05mm	45.13mm	50.0mm .30 kg	Kubota	KX045-Bush-R BF8
B55-45X51	\$ 52	55.06mm	45.13mm	51.0mm .30 kg	20T-70-71250	PC45-Bush-F OF8
B55-45G55	\$ 43	55.05mm	45.13mm	55.0mm .35 kg	Furukawa	337811-11130
B55G45G55	\$ 49	55.06mm	45.15mm	55.0mm .33 kg	TESK 2005	Greasable Bush
B55-45G59	\$ 40	55.05mm	45.12mm	59.0mm .36 kg	550831-23130	610511-51130
B55-45-60	\$ 47	55.07mm	45.15mm	60.0mm .37 kg	Kubota	KX161-Bush-J
B55G45G60	\$ 54	55.05mm	45.13mm	60.0mm .39 kg	TESK 2005	Greasable Bush
B55-45X60	\$ 62	55.10mm	45.16mm	60.0mm .37 kg	Yanmar	VIO 50-Bush-I O/BF8
B55G45G61	\$ 38	55.07mm	45.26mm	61.0mm	John Deere H148881	
B55F45X65	\$120	55.07mm	45.18mm	65.0mm	Yanmar	VIO 50-BUSH-J F99.7
B55G45G66	\$ 55	55.05mm	45.19mm	66.0mm .39 kg	John Deere R81850,R84376	
B56-45-40	\$ 47	56.05mm	45.13mm	40.0mm .27 kg	O.S. TESK 2008	Plain Bush
B56-45-50	\$ 38	56.05mm	45.13mm	50.0mm .34 kg	O.S. TESK 2008	Plain Bush
B56G45G50	\$ 48	56.05mm	45.13mm	50.0mm .33 kg	O.S. TESK 2010	Greasable
B58-45-34	\$ 39	58.10mm	45.29mm	34.0mm .29 kg	CAT Bearing	9R0411
B58-45-40	\$ 39	58.10mm	45.29mm	39.9mm .34 kg	CAT Bearing	9R0147
B60G45G40	\$ 46	60.10mm	45.14mm	40.0mm .37 kg	TESK 2013	Greasable Bush
B60G45G50	\$ 50	60.07mm	45.13mm	50.0mm .47 kg	TESK 2013	Greasable Bush
B60G45G60	\$ 58	60.07mm	45.13mm	60.0mm .57 kg	TESK 2002	Greasable Bush
B61-45-37	\$34 !	61.03mm	45.17mm	37.0mm	\$ REDUCED \$	Plain Bush
B62-45-42	\$ 40	62.10mm	45.15mm	42.0mm .47 kg	Hitachi	EX122, EX60UR
B62G45G55	\$42 !	62.05mm	45.15mm	55.0mm .60 kg	\$ REDUCED \$	Greasable Bush
B65G45G65	\$ 60	65.10mm	45.14mm	65.0mm .87 kg	O.S. TESK 2012	Greasable Bush
B68G45G55	\$ 80	68.08mm	45.15mm	55.0mm .87 kg	Sandvik	912873 4400

Suit 1.875" Diameter Shaft:

B57-48-19	\$ 37	2.252"	1.878"	19.1mm	Case D31512	Plain Bush
B68-48-65	\$42 !	68.06mm	48.13mm	65.0mm .95 kg	\$ REDUCED \$	Plain Bush

Dimensions shown are for the KSet Bush, not for nearby OEM numbers



10.2mm Jobber Drill Bit HSS
Titanium Nitride Coated
135 degrees split point
\$11.00 ea plus GST
Code: TL-9LM102

6 Pack
Jobber Drills \$50 / 6
Code: TL6-9LM102

Use For
M12 x 1.75 Tap

TAP - High Speed Steel **\$26.00**
12mm x 1.75 Intermediate Plus GST
Code: TL-CMCHI120

6 Pack
TAPS - HSS \$117.00 / 6
10mm x 1.75 Intermediate
Code: TL6-CMCHI120

BUSHINGS

Quantity Discounts Available only upon request provided all outstanding invoices are settled within 7 Days

Discount for 10 of any line item \$3.00 ea

Discount for 20 of any line item \$5.00 ea

Discount for 30 of any line item \$6.00 ea

Pins and Bushes Shims and Seals Tools and Cutters

Minimum Product Order **\$150**
Prices subject to change without notice

Case Hardened Bushes - Precision Ground

Suit 50mm Diameter Shaft

KSet Part No.	Price EX GST	Outside	Inside	Length	Manufacture Notes	Locations
B55-50-20	\$54	55.05mm	50.10mm	20.0mm	Thin Wall	Plain Bush
B55G50G50	\$65	55.05mm	50.17mm	50.0mm	Case Hardening Steel: 20MnV6	20MnV6
B55G50G60	\$56 !	55.05mm	50.17mm	60.0mm	\$ REDUCED \$	Greasable Bush
B60-50-19	\$27	60.02mm	50.22mm	18.5mm	Case	D129272
B60-50-20	\$30	60.03mm	50.12mm	20.0mm	Case Hardened	Retrofit Bush
B60-50-26	\$35	60.03mm	50.18mm	25.6mm	Case D140029	580SK-Bush-H,I
B60-49-27	\$34 !	60.00mm	49.99mm	27.4mm	Case 580K Trunnion	G110117
B60-50-27	\$30 !	60.00mm	50.26mm	26.5mm	\$ REDUCED \$	Case E176226
B60-50-28	\$24	60.12mm	50.09mm	27.0mm	John Deere	T154277
B60-50-30	\$32	60.00mm	50.22mm	30.0mm	Case 580K Loader	D127542
B60-50-31	\$26	59.86mm	49.93mm	31.0mm	John Deere	R85884
B60-50-33	\$35	60.01mm	50.23mm	33.0mm	Case 580 SLE	D150608
B60-50-34	\$24 !	60.03mm	50.12mm	34.0mm	\$ REDUCED \$	Plain Bush
B60-50-36	\$33	59.99mm	50.20mm	36.0mm	Case 580K Loader	D137345
B60-50X36	\$44	60.10mm	50.15mm	36.0mm	Kobelco SK060-BUSH-HL	BF8
B60-50-38	\$40	60.11mm	50.13mm	38.0mm	Matbro	33948/001
B60-50G38	\$40	60.10mm	50.15mm	38.0mm	Int. Groove	KY045-Bush-H
B60-50-40	\$42	60.01mm	50.18mm	40.0mm	580SK-Bush-C,D,E	D141555
B60G50G40	\$40	60.07mm	50.17mm	39.8mm	WA420-Bush-S	707-76-5024
B60-50-45	\$44	60.01mm	50.23mm	45.0mm	Case 580K	E176478
B60G50G45	\$36	60.10mm	50.15mm	45.0mm	075 225 321	Greasable Bush
B60G50X45	\$52	60.10mm	50.15mm	45.0mm	Steel Bush Factory Australia	BF8
B60-50-46	\$34 !	60.05mm	50.11mm	46.0mm	\$ REDUCED \$	Plain Bush
B60-50-50	\$40 !	60.11mm	50.15mm	50.0mm	\$ REDUCED \$	Plain Bush
B60-50G50	\$45	60.10mm	50.12mm	50.1mm	Komatsu D65-15	07143-10505
B60-50X50	\$56	60.07mm	50.12mm	49.7mm	Komatsu PC45-C,PC60-7-G	BF8
B60G50G50	\$49	60.05mm	50.13mm	50.0mm	Kobelco SK045-D,E & PC60-K	
B60G50X50	\$60	60.10mm	50.13mm	50.0mm	707-76-50471	PC45-1-Bush-B BF8
B60-50X51	\$54	60.05mm	50.14mm	50.1mm	Komatsu PC45-Bush-F	SK045-A,F 0F8
B60-50X52	\$60	60.10mm	50.15mm	50.0mm	Kobelco SK060-Bush-I	O/B F8
B60-50-51	\$42 !	60.13mm	50.1 mm	51.0mm	\$ REDUCED \$	Matbro 502585
B60G50G53	\$45	60.00mm	50.27mm	52.4mm	Case	180427A1
B60-50-54	\$44	60.05mm	50.18mm	54.1mm	D138047	580SK-Bush-D,HDL
B60G50G54	\$43	60.05mm	50.13mm	54.0mm	Furukawa	352831-11130
B60-50-55	\$47	60.10mm	50.15mm	55.0mm	Kubota	KX161-Bush-F
B60G50G55	\$48	60.06mm	50.15mm	54.9mm	Furukawa	352831-11130
B60-50-56	\$42	60.11mm	50.13mm	56.0mm	Matbro Was 60.13 Dia	33948/005
B60G49G56	\$28	60.07mm	49.73mm	56.0mm	John Deere	R97724
B60G50G59	\$50	60.05mm	50.13mm	59.3mm	Sandvik	20797408
B60G50G60	\$52	60.05mm	50.13mm	60.0mm	Kobelco	SK045-Bush-C
B60G50X60	\$56	60.05mm	50.16mm	60.0mm	Yanmar	VI050-Bush-B,C BF8
B60G50G64	\$45	60.11mm	50.12mm	63.0mm	Matbro	34964
B60G50X65	\$66	60.07mm	50.18mm	64.8mm	PC45-Bush-A	20T-70-71140
B60G50G69	\$50	60.07mm	50.14mm	69.8mm	416-70-11810	WA180-Bush-L,K,J
B60-50-70	\$50	60.11mm	50.13mm	70.0mm	Matbro Was 60.13 Dia	503971
B60G50G70	\$52	60.13mm	50.13mm	70.0mm	707-76-50371	WA120-Bush-E
B60G50X70	\$56	60.14mm	50.16mm	70.0mm	Matbro	37452/012

Dimensions shown are for the KSet Bush, not for nearby OEM numbers
KSet Engineers design bushes to suit market requirements
Example: A neater fit to shafts and pins.

Bushes for 50mm Diameter Shaft Continued next Page...

Frequently Asked Questions:
Where in Queensland can I buy
Dust Seals / Pin Wipers ?
KSet Engineering Pty Ltd
Steel Cased Polyurethane Seals
available EX STOCK.
Overnight Delivery anywhere in QLD !



CENTRE DRILL \$ 15.00 ea
plus GST

No.5 7/16" Dia
High Speed Steel
Code
TL-9CD5-716

CENTRE DRILLS
6 Pack: No. 5 \$ 86.00 / 6
Code
TL6-9CD5-716

BUSHINGS
Quantity Discounts Available only upon
request provided all outstanding invoices
are settled within 7 Days
Discount for 10 of any line item \$3.00 ea
Discount for 20 of any line item \$5.00 ea
Discount for 30 of any line item \$7.00 ea
Discount for 50 of any line item \$9.00 ea

**Bushes and Pins
Seals and Shims
Cutters and Tools**
Minimum Product Order \$150
Prices subject to change without notice



Case Hardened Bushes - Precision Ground

Suit 50mm Diameter Shaft

KSet Part No.	Price EX GST	Outside	Inside	Length	Manufacture Notes	Locations
B60G50X74	\$ 58	60.07mm	50.12mm	74.3mm	.49 kg	Kobelco SK060-Bush-HR BF8
B60-50X75	\$ 60	60.11mm	50.18mm	74.6mm	.49 kg	Yanmar VIO 50-Bush-A,F O/BF8
B60G50X75	\$ 70	60.11mm	50.11mm	75.0mm	.49 kg	Tight Clearance Matbro 37452/011
B60G50X75+	\$ 70	60.12mm	50.19mm	75.0mm	.49 kg	Note! + Extra Clearance
B60G50G98	\$ 76	60.10mm	50.30mm	98.0mm	.69 kg	John Deere T76309
B60G50N110	\$ 76	60.04mm	50.06mm	110 mm	.72 kg	Bush Internal Helical Groove
B60G50N120	\$ 76	60.04mm	50.06mm	120 mm	.78 kg	Bush Internal Helical Groove
B61G50X50	\$ 50	61.12mm	50.20mm	50.0mm		New Matbro 37452/001
B61G50G60	\$ 50	61.05mm	50.13mm	60.0mm	.44 kg	Hard Bush House Greasable
B62-50-50	\$ 64	62.10mm	50.16mm	50.0mm		TESK 2006 Plain Bush
B63-50-24	\$ 40	63.07mm	50.07mm	23.5mm	.21 kg	TESK 2003 Plain Bush
B63G50G50	\$ 52	63.05mm	50.12mm	50.0mm	.45 kg	Externally Greasable Bushing
B63-50X52	\$ 60	63.05mm	50.07mm	52.0mm	.46 kg	Internal Grease Bush
B63G50G75	\$ 48	63.05mm	50.12mm	75.0mm	.70 kg	TESK 2001 Greasable Bush
B65-50G35	\$ 38	65.07mm	50.15mm	35.0mm	.37 kg	Case W14B-Bush-J L112479
B65G50G45	\$ 48	65.11mm	50.14mm	45.0mm	.45 kg	TESK 2011 Greasable Bush
B65G50X47	\$ 48	65.10mm	50.15mm	47.0mm	.46 kg	Kobelco SK060-Bush-K
B65-50G48	\$ 44	65.06mm	50.15mm	48.0mm	.49 kg	201-70-22141 PC75UU-Bush-I
B65-50X48	\$ 56	65.05mm	50.15mm	47.8mm	.50 kg	201-70-72210 PC60UU-Bush-I
B65-50-55	\$ 58	65.13mm	50.11mm	55.0mm	.59 kg	Matbro 502550
B65F50X56	\$ 88	65.10mm	50.18mm	56.0mm		Kobelco SK060-Bush-J
B65-50-60	\$ 60	65.07mm	50.11mm	60.0mm	.65 kg	TESK 2007 Plain Bush
B65G50G60	\$ 62	65.11mm	50.15mm	60.0mm	.63 kg	TESK 2004 Greasable Bush
B65G50G65	\$ 58	65.11mm	50.15mm	65.0mm	.65 kg	TESK 2012 Greasable Bush
B65-50-65	\$ 56	65.13mm	50.11mm	65.0mm	.67 kg	Matbro 501701
B65G50G70	\$ 64	65.13mm	50.11mm	70.0mm	.72 kg	Matbro 501707
B65F50X73	\$120	65.04mm	50.21mm	73.0mm	.88 kg	20X-70-22140 PC60,75UU-Bush-J
B65G50G75	\$ 65	65.08mm	50.13mm	75.0mm	.78 kg	Matbro 502582
B65G50X84	\$ 78	65.08mm	50.13mm	84.0mm	.80 kg	Kobelco SK060-Bush-G
B65G50G95	\$ 70	65.11mm	50.13mm	95.0mm		Matbro 501712, 502994
B67-50R24	\$ 20	2.625"	50.20mm	24.0mm		Case 580K G108689
B67-50R30	\$ 30	2.625"	50.20mm	30.0mm		580SK-Bush-H,R G108525
B67-50-40	\$ 40	2.625"	50.20mm	40.0mm	.48 kg	Case 580SK-Bush-D,C
B67-50R46	\$ 36	2.625"	50.20mm	46.0mm		580SK-Bush-D,E,G G108417
B67-50-90	\$ 40	2.625"	50.05mm	90.0mm	1.08 kg	Case Hardened Plain Bush

CARBIDE BURR \$ 48.00 ea
9.5 Dia Oval plus GST
6mm Dia Shank

Code: TL-SE-3MDC



6 Pack;
Carbide Burrs \$ 248.00 / 6
6mm Dia Shank
TL6-SE-3MDC

Frequently Asked Questions:
Where can I buy Quality Aftermarket Pins and Bushes for Tamrock TB40, TB60 Drill Rigs?
KSet Engineering Pty Ltd
Hardened & Ground Bushings
Available EX STOCK.
Overnight Delivery Australia-Wide!

BUSHINGS
Quantity Discounts Available only upon request provided all outstanding invoices are settled within 7 Days
Discount for 10 of any line item \$3.00 ea
Discount for 20 of any line item \$5.00 ea
Discount for 30 of any line item \$7.00 ea

Pins and Bushes Shims and Seals Tools and Cutters
Minimum Product Order \$150
Prices subject to change without notice

Heavy Wall Bushes for 50mm Diameter Shaft

B70-50-26	\$ 40	70.01mm	50.18mm	25.6 mm	.37 kg	580SK-Bush-IA D141249
B70-50R30	\$ 30	70.00mm	50.20mm	30.0 mm		Case 580K D135075
B70-50-34	\$ 30	70.01mm	50.18mm	34.0 mm	.51 kg	580SK-Bush-EX D141389
B70-50-36	\$ 46	70.00mm	50.20mm	36.0 mm		Case 580K D136574
B70-50R38	\$ 30	70.00mm	50.26mm	38.0 mm		Case 580K D127196
B70-50R40	\$ 32	70.00mm	50.26mm	40.0 mm		Case 580K E176155
B70-50-45	\$ 38 !	70.05mm	50.18mm	45.0 mm	.68 kg	Case Hardened Plain Bush
B70G50G50	\$ 64	70.05mm	50.15mm	50.0 mm		Case Hardened Greasable Bush
B70-50-54	\$ 48	70.01mm	50.19mm	54.0 mm	.81 kg	580SK-Bush-D,E,G D137217
B70-50G60	\$ 50	70.05mm	50.15mm	60.0 mm	.89 kg	TESK 2007 Internal Groove
B70G50G60	\$ 58	70.05mm	50.15mm	60.0 mm		TESK 2011 Greasable Bush
B70-50-78	\$ 70	70.00mm	50.20mm	78.3 mm		580SK-Bush-C D145080

Dimensions shown are for the KSet Bush, not for nearby OEM numbers

Case Hardened Bushes - Precision Ground

Suit 2 inch Diameter Shaft

KSet Part No.	Price EX GST	Outside	Inside	Length	Weight	Manufacture Notes	Locations
B57G51G32	\$36	2.252"	2.003"	1.25"	.13 kg	TESK 2006	Greasable Bush
B57-51-45	\$38	2.252"	2.007"	1.75"	.19 kg	Massey Ferguson	862691M1
B57G51G45	\$42	2.252"	2.004"	1.75"	.18 kg	TESK 2011	Greasable Bush
B57-51-50	\$42	2.252"	2.005"	2.00"	.21 kg	TESK 2011	Plain Bush
B57G51G57	\$50	2.252"	2.003"	2.25"	.24 kg	TESK 2000	Greasable Bush
B57G51G64	\$56	2.252"	2.004"	2.50"	.26 kg	TESK 2011	Greasable Bush
B60-51-22	\$24	2.377"	2.007"	0.88"	.14 kg	CASE1155D	Plain Bush
B60-51-32	\$35	2.377"	2.007"	1.25"	.20 kg	TESK 2000	Plain Bush
B60-51-38	\$36	2.377"	2.007"	1.50"	.24 kg	TESK 2000	Plain Bush
B60G51G38	\$30	2.377"	2.007"	1.50"	.23 kg	TESK 2011	Greasable Bush
B60-51-44	\$35	2.377"	2.006"	1.74"	.28 kg	TESK 2010	Plain Bush
B60G51G44	\$36	2.377"	2.006"	1.75"	.27 kg	TESK 2011	Greasable Bush
B60-51-50	\$36	2.377"	2.006"	2.00"	.31 kg	CAT 953	Bearing for 1J2087
B60G51G50	\$40	2.377"	2.006"	2.00"	.32 kg	TESK 2010	Greasable Bush
B60G51G51	\$24	2.365"	1.997"	2.00"	.32 kg	John Deere	T41953
B60-51-51	\$20	2.365"	2.009"	2.01"	.32 kg	John Deere 770B, 772B	R98953
B60G51G60	\$48	2.378"	2.006"	2.37"	.38 kg	CAT Grader	Greasable Bush
B60G51G64	\$40	2.378"	2.006"	2.50"	.41 kg	CAT Grader	Greasable Bush
B60G51G69	\$36	2.380"	2.009"	2.74"	4:6:23.5	Cat	Use for 2G8738
B60G51G86	\$38	2.380"	2.009"	3.37"	2:6:32	Caterpillar	2G-7106
B64-51-19	\$28	2.501"	2.009"	0.74"	.17 kg	Case 1155D	D33659
B64-51-22	\$38	2.501"	2.009"	0.88"	.20 kg	Case	D33678
B64-51-25	\$36	2.502"	2.004"	0.98"	.22 kg	Eimco	A2U130-194385
B64-51-26	\$34	2.502"	2.007"	1.00"	.23 kg	TESK 2003	Plain Bush
B64F51-26	\$44	2.501"	2.004"	1.00"	.25 kg	Flange 71.5x4.25	A2U130-194392
B64-51-28	\$32	2.500"	2.007"	1.12"	.25 kg	Case 590 Bush	135249A1
B64-51-29	\$34	2.501"	2.009"	1.13"	.25 kg	Case 1155D Bush	D38943
B64-51-32	\$36	2.501"	2.009"	1.25"	.27 kg	Case	D30756
B64F51-32	\$46	2.502"	2.003"	1.26"	.25 kg	Eimco A2U220-194400	F71.5x4.19
B64G51G33	\$30	2.505"	2.009"	1.30"	.31 kg	Cat	2G8635
B64G51G34	\$30	2.505"	2.009"	1.32"	.31 kg	TESK 2004	Greaseable Bush
B64-51-35	\$32	2.501"	2.009"	1.38"	.33 kg	Case D43946	Was B63-51-35
B64G51-35	\$36	2.503"	2.008"	1.37"	.31 kg	3G4704, 6S3459	Cyl Brg 4 holes
B63F51-35	\$16 !	2.493"	2.006"	1.38"	.31 kg	\$ REDUCED \$	T58218 Flange Bush
B64-51G36	\$34	2.503"	2.002"	1.42"	.34 kg	DMS Stg Cyl	Internal Groove
B63-51-37	\$24	2.490"	2.000"	1.50"	.34 kg	John Deere	U43635
B64-51-37	\$38	2.500"	2.006"	1.50"	.34 kg	Case 580 Super L	135248A1
B64-51-38	\$29 !	2.501"	2.009"	1.50"	.34 kg	Case	D31142
B64G51G38	\$40	2.502"	2.007"	1.50"	.32 kg	TESK 2000	Greasable Bush
B64-51-39	\$36	2.502"	2.006"	1.50"	.34 kg	TESK 2007	Plain Bush
B63G51G39	\$22	2.490"	1.997"	1.54"	.33 kg	John Deere 670B 672B	T82886
B64-51-40	\$30	2.502"	2.007"	1.59"	.36 kg	CAT 966 Bucket	6K4076
B63-51-41	\$22	2.490"	1.997"	1.59"	.38 kg	John Deere	T42509
B64G51G42	\$30	2.502"	2.007"	1.63"	.36 kg	TESK 2000	Greasable Bush
B64-51G43	\$32	2.503"	2.002"	1.69"	.36 kg	DMS 2011	Internal Groove
B64G51G44	\$40	2.504"	2.008"	1.75"	.38 kg	TESK 2013	Greasable Bush

Dimensions shown are for the KSet Bush, not for nearby OEM numbers
 KSet Engineers design bushes to suit market requirements
 Example: A neater fit to shafts and pins.

Bushes for 2 inch Diameter Shaft continued next page

Frequently Asked Questions:
 Where can I buy Quality Aftermarket Pins and Bushes for Tamrock TB40, TB60 Drill Rigs?
KSet Engineering Pty Ltd
Hardened Precision Ground Bushings
 Available EX STOCK.
 Overnight Delivery Australia-Wide!

CARBIDE BURR \$ 48.00 ea
 9.5 Dia Oval plus GST
 6mm Dia Shank

Code: TL-SE-3MDC



6 Pack;
Carbide Burrs \$ 248.00 / 6
 6mm Dia Shank
TL6-SE-3MDC

BUSHINGS
 Quantity **Discounts Available** only upon request provided all outstanding invoices are settled within 7 Days
 Discount for **10** of any line item **\$3.00** ea
 Discount for **20** of any line item **\$5.00** ea
 Discount for **30** of any line item **\$6.00** ea

Pins and Bushes Shims and Seals Tools and Cutters
Minimum Product Order \$150
 Prices subject to change without notice

Case Hardened Bushes - Precision Ground

Suit 2 inch Diameter Shaft

<u>KSet Part No.</u>	<u>Price</u>	<u>Outside</u>	<u>Inside</u>	<u>Length</u>		<u>Manufacture Notes</u>	<u>Locations</u>
	EX GST						
B64-51-45	\$ 44	2.503"	2.006"	1.75"	.40 kg	Was B63-51-45	3J3185
B64-51G48	\$ 30	2.503"	2.007"	1.88"	.36 kg	CAT950-Bush-Top-L	7K0084
B63-51-51	\$ 28	2.490"	2.010"	2.00"		John Deere	T25877
B64-51-52	\$ 48	2.502"	2.007"	2.00"	.46 kg	Caterpillar Compatable	5G2186
B63-51G51	\$ 28	2.490"	2.000"	2.01"	.46 kg	John Deere	T34423
B64G51G51	\$ 52	2.502"	2.007"	2.00"	.44 kg	Case	D33032
B64-51-54	\$ 40	2.501"	2.009"	2.13"		CASE	1155D
B64-51G59	\$ 36	2.504"	2.007"	2.34"	.36 kg	CAT 950-Bush-Lever	7K0087
B64-51-60	\$ 48	2.502"	2.006"	2.37"	.54 kg	TESK 2009	Plain Bush
B64G51G60	\$ 49	2.503"	2.007"	2.37"		CAT 955L Bucket	7K9549
B64G51G63	\$ 50	2.502"	2.007"	2.50"	.55 kg	TESK 2000	Greasable Bush
B64-51G63	\$ 34	2.502"	2.006"	2.48"		Caterpillar Bearing	2K4509
B64G51G70	\$ 50	2.502"	2.008"	2.75"	.61 kg	Logging Industry	Steel Bush
B64G51G76	\$ 56	2.502"	2.010"	3.00"	.66 kg	TESK 2006	Greasable Bush
B64G51G79	\$ 48	2.503"	2.009"	3.11"	T 4x6	CAT936Bkt/Link	4V2873, 4V3619
B64F51G87	\$ 99	2.500"	2.006"	3.44"		Flange Bush	F76.2x4.75
B64G51G89	\$ 64	2.501"	2.004"	3.50"		Greasable	Use for 3K0868
B64G51G101	\$ 60	2.504"	2.008"	4.00"	.89 kg	Standen	Was B63G51G101
B65G51X54	\$ 56	65.08mm	2.005"	2.12"	.53 kg	TESK	Internal Figure 8 Groove
B65G51X76	\$ 70	65.08mm	2.005"	3.00"	.74 kg	TESK	Internal Figure 8 Groove
B65-51X100	\$ 90	65.09mm	2.010"	3.94"	.99 kg	MMW	Internal Figure 8 Groove

Deburring Tool \$ 9.00 ea
Non-Replaceable Blade plus GST

Code: TL-DT-1-2

6 Pack; \$ 44.00 / 6

Deburring Tool

Code: TL6-DT-1-2

Sterling



Heavy Wall Bushes for 2" Diameter Shaft

<u>KSet Part No.</u>	<u>Price</u>	<u>Outside</u>	<u>Inside</u>	<u>Length</u>		<u>Manufacture Notes</u>	<u>Locations</u>
	EX GST						
B70-51-39	\$ 42	2.753"	2.009"	1.50"	.55 kg	TESK 2008	Plain Bush
B70-51-41	\$ 44	2.752"	2.013"	1.61"	.57 kg	Case	D50698
B70-51-45	\$ 46	2.753"	2.010"	1.75"		CatD9R	Bearing, Blade
B70G51G51	\$ 54	2.752"	2.006"	2.00"	.70 kg	TESK 2001	Greasable Bush
B70-51-60	\$ 60	2.751"	2.010"	2.36"	.85 kg	Case	D91241
B70-51-61	\$ 58	2.752"	2.010"	2.37"	.86 kg	CatD9R	Bearing, Blade
B70-51-63	\$ 55	2.752"	2.010"	2.50"	.90 kg	TESK 2001 2009	Plain Bush
B70G51G76	\$ 70	2.752"	2.010"	3.00"	1.03 kg	TESK 2009	Greasable Bush
B76-51-39	\$ 50	3.002"	2.006"	1.50"	.76 kg	O.S. TESK 2006 2010	Plain Bush
B76-51-60	\$ 70	3.002"	2.006"	2.37"	1.20 kg	O.S. TESK 2001 2010	Plain Bush
B89R51G48	\$ 50	3.500"	2.023"	1.88"		With Seal Recesses	T113331

Frequently Asked Questions:
Where in Queensland can I buy
Pins - Bushes - Dust Seals
for Kobelco - Komatsu Excavators?
KSet Engineering Pty Ltd
Hardened Bushings - Wiper Seals
Available EX STOCK.
Overnight Delivery to QLD - WA - TAS

BUSHINGS
Quantity Discounts Available only upon
request provided all outstanding invoices
are settled within 7 Days
Discount for 6 of any line item \$3.00 ea
Discount for 10 of any line item \$5.00 ea
Discount for 30 of any line item \$8.00 ea

**Pins and Bushes
Shims and Seals
Tools and Cutters**

Minimum Product Order \$150
Prices subject to change without notice

Dimensions shown are for the KSet Bush, not for nearby OEM numbers
KSet Engineers design bushes to suit market requirements
Example: A neater fit to shafts and pins.

Case Hardened Bushes - Precision Ground

Suit 55mm to 2.25" Diameter Shaft

KSet Part No.	Price EX GST	Outside	Inside	Length	Manufacture Notes	Locations
B60-55-20	\$ 36	60.05mm	55.10mm	20.0mm	Thin Wall	Plain Bush
B65-55-26	\$ 36	65.10mm	55.15mm	26.0mm	Case Back Hoe	Plain Bush
B65-55-35	\$ 38	65.10mm	55.15mm	35.0mm	Massey Ferguson	Plain Bush
B65G55G40	\$ 48	65.05mm	55.07mm	40.0mm	Sandvik 34483978	4x3mm Holes
B65-55-44	\$ 40	65.10mm	55.14mm	44.4mm	TESK 2009	Plain Bush
B65-55X45	\$ 60	65.10mm	55.15mm	45.0mm	Kubota KX045-Bush-F	O/BF8
B65-55-50	\$ 48	65.10mm	55.17mm	50.0mm	TESK 2004	Plain Bush
B65G55G50	\$ 54	65.10mm	55.17mm	50.0mm	TESK 2007	Greasable Bush
B65G55G51	\$ 40 !	65.10mm	55.15mm	51.0mm	\$ REDUCED \$	R97726
B65-55-55	\$ 44	65.10mm	55.10mm	55.0mm	John Deere	T67855
B65G55G65	\$ 68	65.07mm	55.20mm	65.0mm	John Deere	R82076
B65G55X65	\$ 78	65.10mm	55.13mm	65.0mm	KX045-Bush-A	SK045-Bush-B
B65G55G67	\$ 47	65.07mm	55.12mm	67.0mm	John Deere	H144296
B65G55G75	\$ 83	65.07mm	55.12mm	75.0mm	John Deere	R84378
B65G55G76	\$ 78	65.07mm	55.20mm	76.0mm	John Deere	R82077
B65G55G82	\$ 68 !	65.07mm	55.30mm	82.0mm	\$ REDUCED \$	R82075
B68-55G45	\$ 52	68.08mm	55.13mm	44.8mm	WA470-Bush-S-Cyl	707-76-5520
B68G55G45	\$ 54	68.08mm	55.07mm	44.8mm	WA470-Bush-S-Rod	707-76-55120
B68G55G50	\$ 40 !	68.05mm	55.08mm	50.0mm	\$ REDUCED \$	PC16 MR-2
B68-55X55	\$ 62	68.05mm	55.10mm	54.8mm	707-76-55180	PC60-7-Bush-D BF8
B68G55X55	\$ 66	68.05mm	55.11mm	54.9mm	Externally Greasable	Bush
B68G55X65	\$ 74	68.06mm	55.12mm	65.0mm	Takeuchi 00024-00075	TB135-Bush-A
B70-55-26	\$ 41	70.12mm	55.20mm	25.4mm	TESK 2013	Plain Bush
B70-55-36	\$ 39	70.12mm	55.20mm	36.0mm	TESK 2007	Plain Bush
B70G55G55	\$ 76	70.05mm	55.11mm	55.0mm	TESK 2008	Greasable Bush
B70G55G70	\$ 78 !	70.05mm	55.18mm	70.0mm	Yanmar	Greasable Bush
B70G54G98	\$ 48	70.13mm	54.76mm	98.0mm	John Deere	T105677
B75G55G70	\$ 98	75.05mm	55.18mm	70.0mm	Heavy Wall	Greasable Bush
B70-56X65	\$ 102	70.10mm	56.4 mm	65.0mm	Komatsu	141-78-11311
B70-56X85	\$ 110	70.10mm	56.4 mm	85.0mm	Komatsu	141-78-11321
B65-57-43	\$ 58	65.10mm	57.15mm	43.0mm	Claas	Light Wall Bush
B67-57-39	\$ 50	2.629"	2.267"	1.54"	Modified	1J2192
B67-57-50	\$ 50	2.630"	2.267"	1.97"	Modified	1J2192
B67-57-55	\$ 52	2.630"	2.267"	2.16"	Caterpillar D11	Lift Cyl
B67-57-76	\$ 58	2.630"	2.267"	3.00"	Caterpillar D11	Nose Cone
B70-57-24	\$ 27	2.743"	2.260"	0.95"	John Deere	U17170
B70-57-26	\$ 36	2.754"	2.256"	1.00"	TESK 2003	Plain Bush
B70-57-28	\$ 30	2.751"	2.260"	1.13"	CASE 1155D	D52579
B70-57-30	\$ 44	2.755"	2.257"	1.18"	CASE 580K	D127167
B70-57-32	\$ 50	2.754"	2.257"	1.25"	Eimco	913 3059243
B70-57-38	\$ 52	2.754"	2.256"	1.50"	Previous Part	B70-57-37
B70-57-41	\$ 40 !	2.754"	2.257"	1.63"	\$ REDUCED \$ Eimco	913 3059268
B70-57-48	\$ 40	2.753"	2.260"	1.88"	CAT950-Bush-D,E	7J9699
B70-57-50	\$ 60	2.752"	2.259"	1.97"	CAT980G-Pin-S	8P0420
B70G57G51	\$ 66	2.752"	2.256"	2.00"	TESK 2005	Greasable Bush
B70-57-54	\$ 60	2.752"	2.259"	2.12"	CAT 953	Bearing
B70-57-57	\$ 56 !	2.754"	2.257"	2.25"	\$ REDUCED \$ Eimco	913 3059276
B70G57G60	\$ 76	2.753"	2.257"	2.37"	Greasable Bush	4V8643
B70-57-63	\$ 76	2.754"	2.256"	2.50"	TESK 2013	Stg 9J5875
B70-57G63	\$ 50	2.752"	2.261"	2.50"	CAT 988B	913 3059250
B70-57-70	\$ 82	2.754"	2.256"	2.75"	Eimco	913 3059250
B70G57G70	\$ 82	2.753"	2.257"	2.75"	TESK 2004	Greasable Bush
B75G57X99	\$ 128	75.10mm	57.15mm	99.4mm	Claas	Greasable Bush
B76-57-43	\$ 52	3.001"	2.260"	1.70"	Case	D90722
B76-57-54	\$ 52	3.002"	2.256"	2.12"	Caterpillar	6K2702
B76-57-70	\$ 78 !	3.002"	2.258"	2.75"	\$ REDUCED \$	Plain Bush
B76-57R125	\$ 84	2.999"	2.250"	4.9"	3 Only	Recessed ends
B79G57G70	\$ 110	3.126"	2.257"	2.75"	O.S.TESK	Greasable Bush

PFERRD Fan Grinders 6mm Shank
Aluminium Oxide - 120 Grit
Complete PFERRD range available
Bulk orders available

KSet Popular Selection



Size	Code	Price
50 Dia x 30 w	TL-F5030/6 A120	\$ 9
60 Dia x 40 w	TL-F6040/6 A120	\$ 11
80 Dia x 50 w	TL-F8050/6 A120	\$ 15

Plus GST

Frequently Asked Questions:

Where can I buy Quality Aftermarket Pins - Bushes - Dust Seals for Kobelco SK80 MSR Excavators?

KSet Engineering Pty Ltd
Hardened Bushings - Wiper Seals
Available EX STOCK.
Overnight Delivery Australia-Wide !

BUSHINGS

Quantity Discounts Available only upon request provided all outstanding invoices are settled within 7 Days

Discount for 6 of any line item \$5.00 ea
Discount for 10 of any line item \$8.00 ea
Discount for 20 of any line item \$10.00 ea

Pins and Bushes Shims and Seals Tools and Cutters

Minimum Product Order \$150
Prices subject to change without notice

Case Hardened Bushes - Precision Ground

Suit 60mm Diameter Shaft

KSet Part No.	Price EX GST	Outside	Inside	Length	Weight	Manufacture Notes	Locations
B65-60X55	\$ 78	65.07mm	60.10mm	55.0mm	.22kg	Atlas Copco	0500 4520 03
B68-60X65	\$ 48!	68.07mm	60.16mm	65.0mm		\$ Reduced \$	Bushing
B70G60G28	\$ 52	70.14mm	60.17mm	28.0mm	.21kg	John Deere	T70723
B70G60G30	\$ 58	70.10mm	60.15mm	30.0mm	.22kg	Hydraulic Cylinder	Bush 2009
B70-60-35	\$ 58	70.07mm	60.15mm	35.0mm	.28kg	TESK 2012	Plain Bush
B70G60G35	\$ 58	70.07mm	60.15mm	35.0mm	.25kg	Hydraulic Cylinder	Bushing
B70-60-38	\$ 65	70.07mm	60.15mm	38.0mm	.32kg	TESK Plain bush	2006
B70G60G47	\$ 56	70.07mm	60.13mm	47.0mm	.36kg	Furukawa	341811-11320
B70-60-50	\$ 56	70.08mm	60.13mm	50.0mm		Plain bush	Case Hardened
B70G60G50	\$ 60	70.07mm	60.15mm	50.0mm	.383kg	TESK Bush	Greaseable
B70G60X50	\$ 68	70.07mm	60.11mm	50.0mm	.38kg	341811-11310	341811-11160
B70G60G60	\$ 68	70.07mm	60.18mm	60.0mm	.47kg	Matbro	36267
B70G60X60	\$ 78	70.10mm	60.13mm	60.0mm	.46kg	Matbro Closed Fig.8	503621
B70F60-60	\$140	70.05mm	60.20mm	60.0mm	.53kg	Flange 80x7	FBL-10 Steering
B70G60X65	\$ 74	70.06mm	60.13mm	64.9mm	.50kg	Kobelco	SK045-Bush-TD,SL
B70G60G70	\$ 78	70.07mm	60.13mm	70.0mm	.55kg	\$ Reduced \$	Greaseable
B70G60X75	\$ 72!	70.10mm	60.13mm	75.0mm	.58kg	Matbro	37452/013
B70G60X80	\$ 68	70.10mm	60.13mm	80.0mm	.61kg	Kobelco	SK220-Bush-HR
B70G60G85	\$ 80	70.05mm	60.12mm	85.0mm	.70kg	B5X Boom Cyl	Bush
B70G60X90	\$ 90	70.10mm	60.13mm	90.0mm	.69kg	Matbro	37452/002
B70G60X100	\$ 78	70.10mm	60.13mm	100.0mm	.78kg	Matbro	37452/008
B71-60X50	\$ 88	71.44mm	60.01mm	50.2mm	.45kg	Eimco	A2U936-194288 OF8
B71-60X59	\$ 88	70.44mm	60.07mm	59.1mm	.48kg	Eimco	A2U936-194295 OF8
B72-60X35	\$ 68	72.02mm	60.08mm	35.0mm	.33kg	K&H Bush	K5X15° OF8 x 2
B72-60X36	\$ 34!	72.02mm	60.26mm	35.0mm		\$ REDUCED \$	
B72G60G50	\$ 72	72.05mm	60.15mm	50.0mm	.50kg	Kubota	68311-4113-0
B72G60G60	\$ 68	72.05mm	60.15mm	60.0mm		Kubota	68311-4112-0
B73G60X43	\$ 85	73.13mm	60.15mm	43.0mm	.97kg	Kawasaki KLD85Z2	O/BF8
B73G60G50	\$ 48	73.10mm	60.15mm	50.0mm		TESK Bush	Greaseable
B73G60X55	\$ 69	73.13mm	60.15mm	55.0mm	.57kg	KLD80Z2-Bush-L,K	BF8
B73-60X93	\$ 96	73.13mm	60.15mm	93.0mm		Kawasaki KLD85Z2 Bkt	BF8
B75G60G28	\$ 30!	75.06mm	60.10mm	28.0mm	.21kg	\$ REDUCED \$	Greaseable Bush
B75-60-30	\$ 40	75.08mm	60.12mm	30.0mm		Plain Hardened & Ground Bush	
B75-60-35	\$ 50	75.08mm	60.12mm	34.8mm		4365897	EX120-Bush-G (2)
B75G60G35	\$ 48	75.05mm	60.15mm	35.0mm	.27kg	TESK Bush	Greaseable
B75G60G49	\$ 60	75.05mm	60.05mm	49.8mm	.60kg	Komatsu	WA500-Bush-S

Dimensions shown are for the KSet Bush, not for nearby OEM numbers
KSet Engineers design bushes to suit market requirements
Example: A neater fit to shafts and pins.

To suit 60mm shaft continued next page.....

PFERD
Rubber Drum Holders 6mm Shank
Complete PFERRD range available

KSet Popular Selection



Size	Code	Price
38 Dia x 25 w	TL-GK3825 /6	\$ 39
45 Dia x 30 w	TL-GK4530 /6	\$ 39
51 Dia x 25 w	TL-GK5125 /6	\$ 47
60 Dia x 30 w	TL-GK6030 /6	\$ 50

Plus GST

PFERD
Abrasive Spiral Bands - Zirconia
Complete PFERRD range available
Bulk orders available

KSet Popular Selection



Size	Code	Price
38 Dia x 25 w	TL-GSB3825 Z60	\$ 3.25
45 Dia x 30 w	TL-GSB4530 Z60	\$ 3.25
51 Dia x 25 w	TL-GSB5125 Z60	\$ 3.50
60 Dia x 30 w	TL-GSB6030 Z80	\$ 3.50

Plus GST

BUSHINGS
Quantity Discounts Available only upon request provided all outstanding invoices are settled within 7 Days

Discount for 6 of any line item \$6.00 ea
Discount for 10 of any line item \$8.00 ea
Discount for 20 of any line item \$10.00 ea

Pins and Bushes

Minimum Product Order \$150
Prices subject to change without notice

Case Hardened Bushes - Precision Ground

Suit 60mm Diameter Shaft...Continued

KSet Part No.	Price EX GST	Outside	Inside	Length	Manufacture Notes	Locations
B75G60G50	\$60	75.05mm	60.15mm	50.0mm .60 kg	20X-70-24150 PC60,75UU-Bush-HL	
B75-60X50	\$72	75.05mm	60.15mm	49.9mm .60 kg	Komatsu PC60-Bush-F OF8	
B75G60G55	\$70	75.09mm	60.15mm	55.0mm	Kobelco SK220-Bush-HL	
B75-60-60	\$70	75.05mm	60.12mm	60.0mm .74 kg	TESK Plain bush 2000	
B75-60X60	\$68	75.05mm	60.15mm	59.6mm .72 kg	Komatsu PC60-7-Bush-C,E BF8	
B75G60G60	\$80	75.05mm	60.17mm	60.0mm .72 kg	Hydraulic Cylinder Bush 2001	
B75G60X60	\$65!	75.05mm	60.16mm	59.8mm	07144-10606 PC60,75UU-Bush-HR	
B75G60X61	\$65!	75.09mm	60.11mm	60.0mm	Caterpillar 229-1095	
B75G60G65	\$84	75.05mm	60.12mm	65.0mm .78 kg	TESK 2001	
B75G60X65	\$65!	75.10mm	60.13mm	65.0mm .77 kg	\$ REDUCED \$ TESK 2004	
B75G60G69	\$84	75.13mm	60.20mm	69.0mm Kobelco	YY12B01448P1 SK135-Bush-I	
B75-60X69	\$68	75.10mm	60.18mm	68.7mm .83 kg	203-70-56150 PC120-Bush-I OF8	
B75G60X70	\$90	75.09mm	60.20mm	70.0mm .84 kg	Kobelco SK035 Sw Frame	
B75G60X71	\$98	75.11mm	60.18mm	70.0mm .84 kg	Kobelco SK220-Bush-J,K OF8	
B75F60X72	\$220	75.12mm	60.23mm	71.5mm 1.17 kg	YW12B01036P1 SK115SR-Bush-J	
B75G60X75	\$82	75.10mm	60.13mm	75.0mm .90 kg	TESK 2011	
B75G60X79	\$65!	75.10mm	60.15mm	79.0mm .96 kg	Kawasaki KLD80Z1 BF8	
B75-60X80	\$88	75.08mm	60.18mm	80.0mm .96 kg	Kobelco SK220-Bush-I OF8	
B75G60X80	\$48!	75.07mm	60.10mm	80.0mm .96 kg	\$ REDUCED \$ Cylinder Bush BF8	
B75G60G85	\$88!	75.05mm	60.11mm	85.0mm 1.03 kg	TESK 2000	
B75F60X87	\$154	75.15mm	60.20mm	86.8mm 1.84 kg	203-70-42182 PC120-Bush-J OF8	
B75G60X90	\$78	75.11mm	60.15mm	89.8mm 1.09 kg	203-70-56160 PC120-Bush-K OF8	
B75G60X106	\$126	75.13mm	60.16mm	105.9mm 1.29 kg	Kawasaki KLD80Z1 BF8	
B76G60G50	\$68	76.25mm	60.15mm	50.0mm	Imperial Outside OD = 3.002"	

PFERRD Economy Rolls
Complete PFERRD range available

KSet Popular Selection

Economy Rolls



Size	Code	Price
40 mm x 50 m	TL-ER 40A 60	\$ 34
40 mm x 50 m	TL-ER 40A 80	\$ 34
40 mm x 50 m	TL-ER 40A 120	\$ 34
40 mm x 50 m	TL-ER 40A 180	\$ 34

Plus GST

Heavy Wall Bushes for 60mm Diameter Shaft

KSet Part No.	Price EX GST	Outside	Inside	Length	Manufacture Notes	Locations
B78-60G106	\$98	78.10mm	60.18mm	106.0mm 1.60 kg	Plus-size O.D.	Type U
B79G60X62	\$90	79.05mm	60.15mm	62.0mm .96 kg	Kawasaki KLD85Z2	BF8
B80-60-40	\$60	80.10mm	60.14mm	40.0mm 0.67 kg	Plus-size O.D.	Plain Bush
B80G60G65	\$98	80.10mm	60.14mm	65.0mm 1.08 kg	Plus-size O.D.	Greasable Bush
B80G60G80	\$99	80.10mm	60.14mm	80.0mm 1.33 kg	Plus-size O.D.	Greasable Bush
B84G60N155	\$160	84.0mm	60.18mm	155.0mm 1.33 kg	Hardened	Inside Only
B85G60G72	\$90	85.05mm	60.15mm	71.8mm 1.61 kg	Sandvik Atlas	9124 8810 00
B88G60G68	\$102	88.12mm	60.14mm	68.0mm 1.74 kg	Sandvik Atlas	9128 7345 00

BUSHINGS

Quantity Discounts Available only upon request provided all outstanding invoices are settled within 7 Days

Discount for 6 of any line item \$5 ea
Discount for 10 of any line item \$8 ea
Discount for 20 of any line item \$10 ea

Pins and Bushes Shims and Seals Tools and Cutters

Minimum Product Order \$150
Prices subject to change without notice

Dimensions shown are for the KSet Bush, not for nearby OEM numbers
KSet Engineers design bushes to suit market requirements
Example: A neater fit to shafts and pins.

Case Hardened Bushes - Precision Ground

Suit 2.5 inch Diameter Shaft

KSet Part No.	Price EX GST	Outside	Inside	Length	Manufacture Notes	Locations
B70-63X76	\$ 98	70.10mm	63.12mm	76.2mm .40 kg	Metric Suit 63mm Dia Pin	2011
B75-64-65	\$ 58!	75.07mm	2.506"	65.00mm	\$ REDUCED \$	
B76-64-22	\$ 28!	3.000"	2.514"	0.90" .25 kg	\$ REDUCED \$	Special OD
B76-64-23	\$ 42	3.004"	2.514"	0.90" .25 kg	Case 580K	G108310
B76-64-26	\$ 44	3.003"	2.508"	1.00" .28 kg	Case	D33635
B76-64-31	\$ 28!	3.000"	2.506"	1.25" .35 kg	\$ REDUCED \$	Special OD
B76-64-32	\$ 48!	3.003"	2.506"	1.25" .35 kg	\$ REDUCED \$	TESK
B76-64-38	\$ 34!	3.004"	2.506"	1.50" .42 kg	\$ REDUCED \$	CAT 920 7J9745
B76-64-41	\$ 38	3.005"	2.509"	1.61"	John Deere	T54081
B76-64G44	\$ 30	3.004"	2.510"	1.75"	CAT950	Bkt / Link 7J9344
B76G64G44	\$ 38	3.004"	2.510"	1.75"	Caterpillar	8J5778
B76G64G46	\$ 46	3.001"	2.506"	1.80"	Case 1150	R26633
B76-64-47	\$ 48	3.004"	2.504"	1.86"	Eimco	A2U913-194031
B76-64-50	\$ 44	3.003"	2.506"	1.98"	Caterpillar	7K9528
B76-64G50	\$ 57	3.003"	2.506"	1.98"	CAT955	2K4506
B76-64-51	\$ 60	3.002"	2.506"	2.00" .54 kg	JOY	1069127-224
B76G64G51	\$ 62	3.002"	2.506"	2.00" .53 kg	TESK	Greaseable
B76-64G56	\$ 48	3.002"	2.506"	2.22"	Caterpillar	2K4442, 7K9985
B76G64G56	\$ 50	3.003"	2.506"	2.23" .59 kg	CAT988 7K9529	Bkt Top 7K0078
B76-64-57	\$ 48	3.002"	2.506"	2.25" .62 kg	TESK	Plain Bush
B76-64G57	\$ 46	3.004"	2.510"	2.25"	Caterpillar Bearing	7J9732
B76G64G57	\$ 50	3.004"	2.510"	2.25" .60 kg	V Ident.Groove	7K0078
B76-64-60	\$ 66	3.003"	2.506"	2.36"	CAT955 Bkt/Link	5K7995
B76-64G65	\$ 58	3.003"	2.510"	2.56"	CAT 936	Bearing
B76G64G65	\$ 72	3.002"	2.506"	2.56" .69 kg	Standen	HSB 192
B76G64G69	\$ 60	3.004"	2.510"	2.74"	CAT 980A Bkt/Link	7J9731
B76-64-70	\$ 70	3.003"	2.509"	2.75"	JOY	1069127-411
B76G64G70	\$ 60	3.002"	2.506"	2.75" .74 kg	\$ REDUCED \$	Greaseable Bush
B76G64G75	\$ 68	3.003"	2.507"	2.97"	6K3177 CAT977K	Bkt / Link Bearing
B76-64G76	\$ 48!	3.000"	2.514"	3.00" .79 kg	\$ REDUCED \$	R36156
B76G64G76	\$ 68!	3.002"	2.509"	3.00" .78 kg	\$ REDUCED \$	Task 2008
B76G64G84	\$ 88	3.006"	2.510"	3.31"	T50063 John Deere	10mm Ext.Groove
B76G63G84	\$ 82	3.002"	2.506"	3.31" .90 kg	HSB 193	Standen Rippers
B76-64-89	\$ 90	3.004"	2.507"	3.50"	Task 2004	Plain Bushing
B76G64G95	\$ 80	3.003"	2.509"	3.75" T	5V1874	CAT950, 960, 962-Bush-J
B76G64G102	\$ 99	3.002"	2.509"	4.00" 1.09 kg	Task 2009	Greaseable Bush
B76-64H108	\$ 110	3.003"	2.504"	4.25"	A2U913-194033	Eimco
B76G64G109	\$ 66	3.002"	2.511"	4.30" T	4V8675	CAT966G,972GH-Bush-J
B76-64-116	\$ 92	3.003"	2.504"	4.58" 1.30 kg	A2U913-194073	Eimco
B76-64H116	\$ 94	3.003"	2.504"	4.58"	A2U913-194035	Eimco
B76-64H117	\$ 102	3.003"	2.504"	4.58" 1.21 kg	A2U913-194072	Eimco
B76-64H138	\$ 102	3.003"	2.504"	5.43" 1.21 kg	A2U913-194038	Eimco

Heavy Wall Bushes for 2.5 inch Diameter Shaft

B77G64G114	\$ 136	3.037"	2.507"	4.50" 1.31 kg	Plus-size O.D.	Greaseable Bush
B79-64-51	\$ 60	3.128"	2.507"	2.00" .70 kg	JOY	1069127-459
B79G64G76	\$ 80	3.111"	2.508"	3.00" 1.10 kg	Plus-size O.D.	Greaseable Bush
B80G64G50	\$ 70	80.10mm	2.505"	1.97" 0.65 kg	Plus-size O.D.	Greaseable Bush
B82G64G63	\$ 88	3.252"	2.504"	2.50" 1.06 kg	TESK Loader Bush	2001
B82G64G76	\$ 98	3.252"	2.508"	3.00" 1.28 kg	TESK Excavator Bush	2005
B89G64G76	\$ 130	3.503"	2.507"	3.00" 1.82 kg	TESK	2013

Dimensions shown are for the KSet Bush, not for nearby OEM numbers

PFERRD Economy Rolls
Complete PFERRD range available

KSet Popular Selection

Economy Rolls



Size	Code	Price
40 mm x 50 m	TL-ER 40A 60	\$ 34
40 mm x 50 m	TL-ER 40A 80	\$ 34
40 mm x 50 m	TL-ER 40A 120	\$ 34
40 mm x 50 m	TL-ER 40A 180	\$ 34

Plus GST

Frequently Asked Questions:

In New Zealand can I buy ready-made hardened steel bushes / bushings ?

KSet Engineering Pty Ltd

has 1,250 different size bushings available EX STOCK.

Delivery to New Zealand takes 2 days.

BUSHINGS

Quantity Discounts Available only upon request provided all outstanding invoices are settled within 7 Days

Discount for 6 of any line item \$6.00 ea

Discount for 10 of any line item \$8.00 ea

Discount for 20 of any line item \$10.00 ea

Pins and Bushes
Shims and Seals
Tools and Cutters

Minimum Product Order \$150

Prices subject to change without notice

Case Hardened Bushes - Precision Ground

Suit 65mm Diameter Shaft

KSet Part No.	Price	Outside	Inside	Length		Manufacture Notes	Locations
EX GST							
B73-65G60	\$ 46	73.13mm	65.15mm	60.3mm	.54 kg	Special O.D.	Bush
B75G65G30	\$ 59	75.09mm	65.28mm	30.0mm		John Deere	T76637
B75G65G35	\$ 52!	75.10mm	65.16mm	35.0mm	.45 kg	\$ REDUCED \$	Greaseable
B75-65X60	\$ 58!	75.05mm	65.15mm	60.0mm		\$ REDUCED \$	Type X
B75G65G60	\$ 78	75.07mm	65.14mm	60.0mm		TESK 2012	Greaseable
B75G65G64	\$ 68!	75.05mm	65.13mm	64.0mm	.54 kg	343831-11130 Furukawa	343811-11370
B75G65X75	\$ 88	75.10mm	65.15mm	75.0mm	.65 kg	Kobelco	SK220-Bush-J,K OF8
B75G65G80	\$ 82	75.05mm	65.15mm	80.0mm	.62 kg	TESK	Greaseable
B76G65G50	\$ 74	76.0 mm	65.08mm	50.0mm	.48 kg	John Deere	T126935,T100252
B79-65G65	\$ 58	79.80mm	65.16mm	64.8mm		Internal Groove	2 only
B80-65-35	\$ 58	80.10mm	65.16mm	34.8mm		4365448	EX120-Bush-HR (2)
B80-65-50	\$ 58	80.10mm	65.16mm	50.0mm		4344898S	EX120-Bush-I,J,K
B80-65X50	\$ 70	80.11mm	65.16mm	49.8mm	.66 kg	203-70-56140 OF8	PC120-Bush-HL
B80G65X50	\$ 78	80.13mm	65.16mm	50.0mm	.65 kg	Hitachi	EX 120
B80G65X58	\$ 80	80.06mm	65.15mm	57.9mm	.75 kg	707-76-65220 2BF8	PC120-Bush-HR
B80G65G59	\$ 90	80.13mm	65.20mm	58.9mm	.80 kg	YB12B01101P1 Kobelco	SK135-Bush-K
B80G65X60	\$ 70	80.12mm	65.22mm	60.0mm		CAT 311	2291092
B80G65G64	\$ 84	80.10mm	65.15mm	64.3mm	Use 2	4344899, 4444914S	EX120-Bush-HL
B80-65G65	\$ 80	80.04mm	65.22mm	64.8mm	.89 kg	417-70-11860	WA250-Bush-J,K,L
B80G65G65	\$ 78	80.06mm	65.14mm	64.9mm		07144-10607	WA200-5-Bush-C,J,K,L
B80G65X65	\$ 88	80.06mm	65.16mm	64.9mm		Komatsu	PC120-Bush-G
B80G65G69	\$ 90	80.14mm	65.23mm	68.9mm	Kobelco	YM12B01120P1	SK135-Bush-HL
B80-65-70	\$ 88	80.12mm	65.18mm	70.0mm		New Item	Plain Bush
B80G65G74	\$ 90	80.12mm	65.23mm	73.9mm	Kobelco	YY12B01554P1	SK135-Bush-HR
B80G65G75	\$ 90	80.06mm	65.15mm	74.5mm	1.02 kg	TESK	2007
B80F65X75	\$ 160	80.10mm	65.26mm	74.8mm	LP12B01030P1	Flange 123x9	SK135-BUSH-J O,BF8
B80G65G80	\$ 88	80.07mm	65.15mm	80.0mm	1.07 kg	TESK	2012
B80G65G81	\$ 88	80.11mm	65.17mm	80.0mm		CAT 311 Bearing	229-1091
B80G65G84	\$ 98	80.05mm	65.15mm	84.0mm	1.11 kg	Furukawa	353831-11130
B80G65G89	\$ 92	80.05mm	65.10mm	88.5mm	1.17 kg	Komatsu	135-30-11251
B80G65G100	\$ 98	80.06mm	65.15mm	99.6mm	1.37 kg	TESK	2007
B80-65X130	\$ 110	80.06mm	65.15mm	129.8	707-76-65250	Int Groove 35mm wide	PC60-7-Bush-B

Heavy Wall Bushes for 65mm Diameter Shaft

KSet Part No.	Price	Outside	Inside	Length		Manufacture Notes	Locations
EX GST							
B83G65G100	\$ 110!	83.06mm	65.16mm	99.5mm	1.63 kg	\$ REDUCED \$	O.S. TESK
B85G65X65	\$ 110!	85.10mm	65.16mm	65.0mm	1.17 kg	\$ REDUCED \$	O.S. TESK BF8
B90-65X90	\$ 120	90.09mm	65.12mm	90.0mm	2.17 kg	TESK	2013 BF8
B95F65X80	\$ 220	95.17mm	65.30mm	80.0mm	2.41 kg	Flange Bush	Replaces 2 Kobelco
						Kobelco YY12B01446P1+	YY12B01447P1
B76-67G191	\$ 88!	76.02mm	66.62mm	190.5mm		\$ REDUCED \$	2 only

Dimensions shown are for the KSet Bush, not for nearby OEM numbers
KSet Engineers design bushes to suit market requirements
Example: A neater fit to shafts and pins.

PFERD
Rubber Drum Holders - 6mm Shank
Complete PFERRD range available
Bulk orders available

KSet Popular Selection



Size	Code	Price
38 Dia x 25 w	TL-GK3825 /6	\$ 39
45 Dia x 30 w	TL-GK4530 /6	\$ 39
51 Dia x 25 w	TL-GK5125 /6	\$ 47
60 Dia x 30 w	TL-GK6030 /6	\$ 50

Plus GST

PFERD
Abrasive Spiral Bands - Zirconia
Complete PFERRD range available
Bulk orders available

KSet Popular Selection



Size	Code	Price
38 Dia x 25 w	TL-GSB3825 Z60	\$ 3.25
45 Dia x 30 w	TL-GSB4530 Z60	\$ 3.25
51 Dia x 25 w	TL-GSB5125 Z60	\$ 3.50
60 Dia x 30 w	TL-GSB6030 Z80	\$ 3.50

Plus GST

BUSHINGS
Quantity Discounts Available only upon request provided all outstanding invoices are settled within 7 Days

Discount for 4 of any line item \$6 ea
Discount for 10 of any line item \$9 ea
Discount for 20 of any line item \$12 ea

Pins and Bushes

Minimum Product Order \$150
Prices subject to change without notice

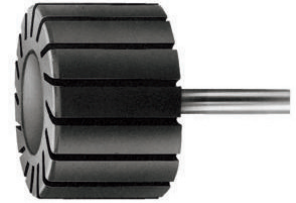
Case Hardened Bushes - Precision Ground

Suit 2.75" & 70mm Diameter Shaft

KSet Part No.	Price EX GST	Outside	Inside	Length	Manufacture Notes	Locations
B76-69-80	\$ 70	76.05mm	69.16mm	80.0mm	Sleeve	Suits 2.75" Shaft
B80-70-25	\$ 56	79.99mm	70.20mm	25.0mm	Case D144421	580SK-BUSH-BC
B80-70-28	\$ 42	79.78mm	69.90mm	28.0mm	Case 580SL	124568A2 Trunnion
B80G70G50	\$ 75	80.07mm	70.18mm	50.0mm	.46 kg	TESK 2003
B80G70X50	\$ 88	80.07mm	70.15mm	50.0mm	.44 kg	TESK 2004
B80F70-52	\$160	80.02mm	70.10mm	51.98	.63 kg	Flange 100x7.5 Sandvik 2643 9788
B80F70X52	\$170	80.02mm	70.10mm	51.98	.62 kg	Flange 100x7.5 Sandvik 2643 9808
B80-70-60	\$ 79	80.07mm	70.13mm	60.0mm	.56 kg	Furukawa 352811-11230
B80-70N60	\$160	80.02mm	70.04mm	60.0mm	.54 kg	JUG-A-O 0504-10003
B80G70X60	\$ 86	80.10mm	70.12mm	59.7mm	.56 kg	Kobelco SK60 PY52F 010 03P1 BF8
B80-70N65	\$165	80.02mm	70.04mm	65.0mm	.58 kg	JUG-A-O 0504-10004
B80G70X65	\$ 68	80.10mm	70.12mm	65.0mm		Hydraulic Ram Bush BF8
B80G70G75	\$ 90	80.07mm	70.20mm	75.0mm	.66 kg	TESK Greaseable Bush
B80-70-79	\$ 88	80.05mm	70.15mm	80.0mm	.74 kg	TESK Plain Bush
B80-70-80	\$ 88!	80.11mm	70.13mm	80.0mm	.73 kg	John Deere T67856, 504234
B80-70X80	\$ 98!	80.05mm	70.15mm	80.0mm	.72 kg	\$ REDUCED \$ Furukawa 353811-11190
B80G70X85	\$110	80.09mm	70.20mm	85.0mm	.75 kg	TESK 2009 Greasable Bush
B80G70X90	\$110	80.10mm	70.19mm	90.0mm	.80 kg	Kobelco SK135 Offset
B80-70G104	\$110	80.07mm	70.20mm	104.0mm	.94 kg	Volvo BM90C-Bush-J,K,L
B82-70-32	\$ 52	3.253"	2.761"	1.28"	.39 kg	CAT 633 STRG 4T0370
B82-70-45	\$ 50	3.253"	2.759"	1.75"	.52 kg	CAT 920 8E6752
B82G70-56	\$ 66	3.253"	2.760"	2.20"	.62 kg	CAT936-Bkt/Link 4V2883
B82-70-57	\$ 66	3.253"	2.756"	2.25"	.70 kg	CAT983-Bush-F8K7618, 7J9374
B82-70G57	\$ 44	3.252"	2.758"	2.23"	.70 kg	CAT950-Bush-A 7K0086
B82-70-60	\$ 56	3.252"	2.757"	2.37"		CAT Blade Bearing 3G9598
B82G70G60	\$ 58!	3.252"	2.757"	2.37"	.67 kg	\$ REDUCED \$ TESK
B82G70G64	\$ 68	3.253"	2.760"	2.50"		Cat Bearing 3G5285
B82-70-70	\$ 68	3.254"	2.751"	2.75"	.86 kg	TESK 2005 Plain Bush
B82G70G70	\$ 68	3.252"	2.759"	2.75"		CAT953-Bush-L,K Tilt Link
B82-70-74	\$ 68	3.252"	2.756"	2.90"	.90 kg	CAT983 7K8114
B82G70G75	\$ 68	3.252"	2.756"	2.95"		CAT983 Bearing
B82-70-95	\$ 90	3.253"	2.757"	3.75"	1.11kg	3G5281 Caterpillar Bearing
B83-70X44	\$ 86	83.13mm	70.14mm	44.0mm	.53kg	Kawasaki KLD 80 Z1 B/OF8
B83-70X55	\$ 98	83.13mm	70.14mm	55.0mm	.66kg	Kawasaki KLD 80 Z1 B/OF8
B83-70X71	\$ 75	83.10mm	70.13mm	71.0mm		Kawasaki KLD 95 Z
B85G70G44	\$ 68	85.10mm	70.13mm	44.0mm	.59kg	2002 Bucket Bush
B85G70X50	\$ 88	80.16mm	70.17mm	50.0mm	.44 kg	CAT 311 2487835
B85G70X55	\$ 78	85.11mm	70.18mm	55.0mm	.73kg	404 325 400 IHI BF8
B85-70G60	\$ 72	85.09mm	70.19mm	59.6mm	.82kg	707-76-70720 Komatsu
B85G70X60	\$ 80	85.10mm	70.12mm	59.7mm	.82kg	418-63-33140 & Kobelco SK045-Bush-T
B85G70G65	\$ 72	85.07mm	70.24mm	64.8mm		707-76-70010 Komatsu W120
B85G70X66	\$ 88	85.13mm	70.18mm	66.0mm	.66kg	Kobelco SK210-Bush-I
B85G70X67	\$ 82!	85.15mm	70.30mm	66.8mm	.92kg	205-70-73180 PC200-Bush-HL, HR
B85-70-70	\$ 78	85.10mm	70.18mm	70.0mm	1.02kg	TESK 2004
B85-70X70	\$ 58	85.05mm	70.20mm	69.7mm	.97kg	707-76-70240 PC120-Bush-D,E BF8
B85G70X70	\$ 82	85.07mm	70.15mm	70.0mm		707-76-70230 PC120-Bush-B,C
B85G70X75	\$ 84	85.10mm	70.15mm	75.0mm	1.03kg	Komatsu PC200-Bush-HL
B85-70X77	\$ 78	85.15mm	70.18mm	76.9mm	1.08kg	203-70-56130 PC120-Bush-F OF8
B85G70X78	\$ 88	85.07mm	70.16mm	78.0mm		707-76-70110 PC200-6,7-Bush-HR
B85-70G80	\$ 84	85.17mm	70.20mm	80.0mm		CAT325,330 7Y3551
B85G70X80	\$ 88	85.10mm	70.19mm	80.0mm	1.11kg	Kobelco SK135 Offset

PFERD
Rubber Drum Holders - 6mm Shank
Complete PFERRD range available
Bulk orders available

KSet Popular Selection



Size	Code	Price
38 Dia x 25 w	TL-GK3825 /6	\$ 39
45 Dia x 30 w	TL-GK4530 /6	\$ 39
51 Dia x 25 w	TL-GK5125 /6	\$ 47
60 Dia x 30 w	TL-GK6030 /6	\$ 50

Plus GST

PFERD
Abrasive Spiral Bands - Zirconia
Complete PFERRD range available
Bulk orders available

KSet Popular Selection



Size	Code	Price
38 Dia x 25 w	TL-GSB3825 Z60	\$ 3.25
45 Dia x 30 w	TL-GSB4530 Z60	\$ 3.25
51 Dia x 25 w	TL-GSB5125 Z60	\$ 3.50
60 Dia x 30 w	TL-GSB6030 Z80	\$ 3.50

Plus GST

BUSHINGS
Quantity Discounts Available only upon request provided all outstanding invoices are settled within 7 Days
Discount for 6 of any line item \$6.00 ea
Discount for 10 of any line item \$9.00 ea
Discount for 20 of any line item \$10.00 ea

Pins and Bushes
Minimum Product Order \$150
Prices subject to change without notice

Bushes for 70mm Diameter Shaft continued next page



Case Hardened Bushes - Precision Ground

Suit 70mm Diameter Shaft

KSet Part No.	Price EX GST	Outside	Inside	Length	Manufacture Notes	Locations
B85G70X84	\$ 86	85.13mm	70.29mm	84.8mm	21K-70-4141 203-70-4141 2xOF8	
B85G70X85	\$ 98	85.14mm	70.16mm	84.7mm 1.18kg	203-70-56121 PC120-Bush-A 2xBF8	
B85G70X86	\$ 89	85.10mm	70.18mm	85.0mm 1.19kg	205-70-71360 PC200-Bush-B,G	
B85G70G86	\$ 70!	85.08mm	70.16mm	85.8mm	\$ REDUCED \$ 707-76-70651	
B85G70X97	\$ 98!	85.05mm	70.15mm	97.0mm 1.35kg	\$ REDUCED \$ KATO HD900 BF8	
B86-70-25	\$ 56	86.00mm	70.20mm	25.0mm .37kg	Case 580K	E176194
B86-70-28	\$ 60	86.01mm	70.20mm	28.0mm .40kg	Case 580K	D135559
B86-70-30	\$ 62	86.01mm	70.20mm	30.0mm .42kg	Case 580K	D135557
B86-70-32	\$ 40	86.00mm	70.20mm	32.0mm	Case 580Kss	E176196
B86-70-34	\$ 64	86.01mm	70.20mm	34.0mm .51kg	Case D135558 D138042 D155073	
B86G70G36	\$ 50	86.13mm	69.5 mm	36.0mm	Greasable Bush to Bore Out	
B86F70X55	\$ 100	86.00mm	70.10mm	55.0mm	Flange 150 Dia x 15	BF8
B86G70X80	\$ 110	86.01mm	70.18mm	80.0mm	O.S. TESK	2004
B89-70X56	\$ 75	3.511"	70.18mm	55.6mm	Kawasaki KLD80Z2 Bush-J B/OF8	
B89G70G70	\$ 80	3.503"	2.756"	2.75" 1.26kg	TESK	2004
B89G70G75	\$ 80	89.10mm	70.15mm	75.0mm	Kawasaki	KL 85 Z2

Heavy Wall Bushes for 70mm Diameter Shaft

KSet Part No.	Price EX GST	Outside	Inside	Length	Manufacture Notes	Locations
B90-70-24	\$ 40	90.00mm	70.22mm	24.0mm	Case 580K	D135741
B90F70-24	\$ 38	90.00mm	70.22mm	24.0mm	Flange 94 x 4.25	D135742
B90-70-30	\$ 52	90.00mm	70.21mm	30.0mm	Case 580K	D151060
B90-70-32	\$ 46	90.01mm	70.23mm	32.2mm	Case 580SK-Top-Piv	
B90-70R32	\$ 32	90.00mm	70.20mm	32.0mm	Case 580K	D135555
B90F70-33	\$ 32	90.00mm	70.19mm	33.0mm	Case D135740 580SK-Bush-AB	
B90-70-38	\$ 48	90.01mm	70.19mm	37.8mm	Case D151070 580SK-Low-Piv	
B90F70-38	\$ 40	90.00mm	70.19mm	38.0mm	Flange 94x4 580SK-Bush-AB	
B90-70R38	\$ 25!	90.00mm	70.20mm	38.0mm	\$ REDUCED \$ Recessed D135556	
B90F70R38	\$ 40	90.00mm	70.22mm	38.0mm	Flange 94x4	D136569
B90F70R39	\$ 66	90.00mm	70.22mm	39.3mm	Flange 94x4 580SK-Bush-B	
B90-70R40	\$ 56	90.00mm	70.33mm	40.0mm	Case 580K	E176209
B90-70-44	\$ 66	90.00mm	70.20mm	44.0mm	Case 580SK-Bush-F	
B90-70R50	\$ 75	90.00mm	70.20mm	49.7mm .82kg	Case 580K	D136715
B90-70-50	\$ 74	90.01mm	70.19mm	49.7mm	Case 580	137250A1
B90-70-63	\$ 46!	90.01mm	70.22mm	63.2mm	\$ REDUCED \$ Case 590 D151058	
B90G70G69	\$ 70	90.06mm	70.15mm	69.0mm 1.36kg	Sandvik 23330018 Rod End	
B90G70G80	\$ 88	90.10mm	70.18mm	80.0mm	TESK Greaseable Bush 2002	
B90-70X80	\$ 78	90.10mm	70.18mm	80.0mm	Kato HD700V2 Bush-I B/OF8	
B90-70X81	\$ 68!	90.10mm	70.18mm	80.0mm	Kato HD700V2 Bush-J BF8	
B90-70X86	\$ 78	90.10mm	70.18mm	86.0mm 1.71kg	Kato HD700V2 Bush-K BF8	
B90G70X86	\$ 99!	90.10mm	70.18mm	86.0mm	Kato 800V2,900 Bush-J	
B90-70X100	\$ 136	90.12mm	70.23mm	100.0mm	Kato 800V2,900 Bush-K	
B92-70-51	\$ 58!	92.10mm	2.756"	50.8mm	\$ REDUCED \$ O.S. TESK	
B93G70X86	\$ 90	93.10mm	70.17mm	86.0mm	O.S. TESK 2005 BF8	
B95G70G69	\$ 90	95.06mm	70.15mm	69.0mm 1.76kg	Sandvik 34453868 Bushing Tube	
B100G70R75	\$ 96	100.06mm	70.12mm	75.0mm	Komatsu WA250-3A-Bush-D,E	
B108G70G70	\$ 120	108.11mm	70.08mm	69.77mm	Sandvik 2873 4600	

Dimensions shown are for the KSet Bush, not for nearby OEM numbers

SHORTEN BUSHES EASILY !

Code: TL-RNGN \$ 46 each plus GST
RNRN 12 04 00T01020 670

TL6-RNGN \$ 216 for 6
SANDVIK Cormorant - Turning Insert -
- Ceramic Whisker Reinforced -



Hard Part Turning

Code: TL-SNGN \$ 40 each plus GST
SNGN 12 07 08T01020 670

TL6-SNGN \$ 196 for 6
SANDVIK Cormorant - Turning Insert

Ceramic Whisker Reinforced -
A silicon carbide aluminium oxide based
ceramic with excellent bulk toughness.
Recommended for **Hard Part Turning**
in unfavourable conditions



Code: TL-N151.2 \$ 110 each plus GST
N151.2-600-50EP

TL6-TL-N151.2 \$ 606 for 6
SANDVIK Cormorant - Parting Insert
Cubic Boron Nitride - Q-Cut CBN
Part through Hard Bushes 60 Rockwell C

BUSHINGS

Quantity **Discounts Available** only upon
request provided all outstanding invoices
are settled within 7 Days

Discount for 4 of any line item \$6 ea
Discount for 10 of any line item \$9 ea
Discount for 20 of any line item \$12 ea

Pins and Bushes Shims and Seals Tools and Cutters

Minimum Product Order \$150
Prices subject to change without notice

Suit 71mm to 75mm Diameter Shaft

KSet Part No.	Price EX GST	Outside	Inside	Length	Manufacture Notes	Locations
B86-71X50	\$ 78	86.14mm	71.20mm	50.0mm	Hitachi	Zaxis 160-Bush-I
B86G71G50	\$ 70	86.14mm	71.25mm	50.0mm	0.72kg	ZX200-3-Bush-I
B86G71G65	\$ 78	86.12mm	71.20mm	65.0mm	0.94kg	EX120-Bush-F (2)
B86G71G70	\$ 78	86.12mm	71.20mm	70.0mm	1.01kg	ZX120-Bush-F-J (2)
B86G71G84	\$ 78	86.12mm	71.20mm	90.0mm	1.21kg	Zaxis 160-Bush-HR
B86G71G90	\$ 78	86.12mm	71.20mm	90.0mm	1.30kg	Zaxis 160-Bush-HL
B85-75-38	\$ 48	85.07mm	75.18mm	37.9mm	.38kg	1x6mm Ext Chamfer
B85F75-38	\$ 68	85.12mm	75.20mm	37.9mm	.41kg	Flange 89 x 4
B85G75G60	\$ 70	85.05mm	75.15mm	60.0mm	.57kg	Hydraulic Cylinder
B85G75X60	\$ 76	85.05mm	75.12mm	60.0mm	.57kg	Kobelco
B85G75X90	\$ 98	85.08mm	75.19mm	90.0mm	.86kg	Hydraulic Cylinder
B90G74G48	\$ 50	90.12mm	74.85mm	48.2mm		John Deere 315SE
B90-75-50	\$ 70	90.05mm	75.20mm	50.0mm	.77kg	Plain Bush
B90-75X57	\$ 98	90.11mm	75.40mm	57.1mm	.83kg	Plain Bush
B90-75-60	\$ 76	90.05mm	75.15mm	60.0mm		2002
B90-75G64	\$ 76	90.05mm	75.26mm	64.7mm	.97kg	Komatsu
B90G75G65	\$ 78	90.05mm	75.18mm	64.7mm	.91kg	154-63-42420
B90-75G65	\$ 78	90.12mm	75.20mm	65.0mm	1.01kg	Komatsu
B90-75G66	\$ 78	90.07mm	75.16mm	65.0mm	1.01kg	WA320-Bush-B,C
B90G75G75	\$ 84	90.05mm	75.15mm	75.0mm	1.12kg	Komatsu D85A-18
B90-75G80	\$ 84	90.08mm	75.18mm	80.0mm	1.21kg	WA300-Bush-J
B90G75G85	\$ 86	90.06mm	75.18mm	85.0mm	1.27kg	WA300, 320-Bush-L,K
B90G75G120	\$ 98	90.12mm	75.20mm	119.8mm		WA200-5-Bush-F
B90-75G138	\$ 98	90.12mm	75.25mm	138 mm		385-1001-8432
B92G75G65	\$ 80	92.07mm	75.28mm	65.0mm		Hydraulic Cylinder
B95-75-50	\$ 58	95.05mm	75.18mm	50.0mm	1.03kg	Task 2000
B95-75-55	\$ 62	95.05mm	75.15mm	55.0mm		Komatsu
B95-75-68	\$ 72	95.01mm	75.01mm	67.9mm		Plain Bush
B95-75-75	\$ 72	95.06mm	75.15mm	75.0mm		Komatsu
B95G75G100	\$ 78	95.10mm	75.15mm	100mm	2.07kg	Greaseable Bush
B100G75G75	\$ 88	100.11mm	75.15mm	75.0mm	2.80kg	Task 2000
B100G75G100	\$ 98	100.12mm	75.15mm	100 mm	2.90kg	Task 2004

Heavy Wall Bushes for 75mm Diameter Shaft

KSet Part No. Price EX GST Outside Inside Length Manufacture Notes Locations

Dimensions shown are for the KSet Bush, not for nearby OEM numbers
KSet Engineers design bushes to suit market requirements
Example: A neater fit to shafts and pins.



Pins and Bushes
Shims and Seals
Tools and Cutters
Minimum Product Order \$150
Prices subject to change without notice

BUSHINGS
Quantity Discounts Available only upon request provided all outstanding invoices are settled within 7 Days
Discount for 4 of any line item \$6.00 ea
Discount for 10 of any line item \$9.00 ea
Discount for 20 of any line item \$12.00 ea

Frequently Asked Questions:
In New Zealand can I buy ready-made hardened steel bushes / bushings?
KSet Engineering Pty Ltd has 1,250 different size bushings available EX STOCK.
Delivery to New Zealand takes 2 days.

KSet Popular Selection

Complete PFERRD range available
Bulk orders available
Aluminium Oxide - 120 Grit
PFERRD Fan Grinders 6mm Shank

Code	Size	Price
TL-F8050/6 A120	80 Dia x 50 w	\$ 15
TL-F6040/6 A120	60 Dia x 40 w	\$ 11
TL-F5030/6 A120	50 Dia x 30 w	\$ 9

Plus GST

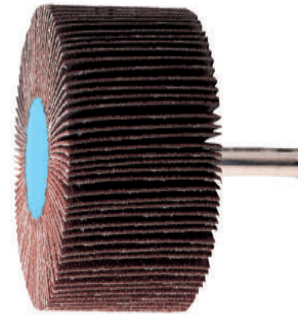
Case Hardened Bushes - Precision Ground

Suit 3" Diameter Shaft

KSet Part No.	Price EX GST	Outside	Inside	Length	Manufacture Notes	Locations
B89-76-33	\$ 49	3.504"	3.014"	1.31"	D7G Ripper Group	3J6442
B89-76-39	\$ 50	3.503"	3.004"	1.54"	Eimco	A2U913-194036
B89-76T40	\$ 48	3.493"	2.9985"	1.56"	CAT950-Bush-B	7J9694
B89-76-49	\$ 58	3.503"	3.004"	1.93"	Eimco	A2U913 194037
B89G76G51	\$ 64	3.501"	3.006"	2.00"	TESK	4x5Ø Holes
B89G76G53	\$ 40!	3.500"	3.006"	2.12"	\$ REDUCED \$	21 Only to clear
B89-76-57	\$ 66	3.504"	3.006"	2.24"	TESK	2003
B89-77-57	\$ 48	3.505"	3.020"	2.25"	D7G Ripper Group	3J6167
B89-76-63	\$ 66	3.506"	3.012"	2.50"	TESK	2005
B89G76G63	\$ 68	3.504"	3.006"	2.50"	TESK	McC 2007
B89G76G64	\$ 42	3.506"	3.011"	2.50"	Caterpillar Bearing	7J9346
B89-76-70	\$ 68	3.502"	3.004"	2.75"	TESK	2011
B89G76G73	\$ 68	3.505"	3.005"	2.85"	Replaces Bronze	8J6536
B89-76G75	\$ 68	3.504"	3.008"	2.97"	CAT955 Bkt/Link	7K9573
B89G76G76	\$ 74	3.504"	3.006"	3.00"	TESK	2001
B89F77-79	\$ 90	3.485"	3.025"	3.10"	Flange 114 x 2.5	T38642
B89-76G81	\$ 68	3.503"	3.009"	3.18"	CAT966-BUSH-C	4V8674
B89-76G83	\$ 68	3.504"	3.006"	3.25"	Case Loader 721-Bush-J,L,K	
B89G76G89	\$ 84	3.502"	3.005"	3.50"	TESK	2x5Ø Holes
B89G76G94	\$ 89	3.503"	3.011"	3.70"	CAT980C,F,G-Bush-L,K	1V9148
B89G76G102	\$ 78!	3.503"	3.006"	4.00"	\$ REDUCED \$	4J6533
B89G76X105	\$ 148	3.504"	3.006"	4.13"	Atlas Copco	5575 7008 92
B89-76G107	\$ 80	3.504"	3.008"	4.23"	CAT950-BUSH-F	8K5757
B89G76X108	\$ 130	3.503"	3.005"	4.25"	Groove=86.6Ø	10Radius
B89G76G133	\$ 98	3.506"	3.014"	5.24"	CAT 966-BUSH-B	9J7078
B90G76G76	\$ 90!	3.547"	3.006"	3.00"	\$ REDUCED \$	Extra Size O.D.
B95-76-26	\$ 42	3.753"	3.006"	1.00"	TESK, Plain	2007
B95-76-38	\$ 34	3.753"	3.007"	1.50"	Caterpillar 3J6484	D10 Ripper
B95-76-40	\$ 48	3.751"	3.008"	1.60"	Caterpillar	28 Ripper
B95-76-51	\$ 48	3.752"	3.004"	2.00"	Caterpillar	28 Ripper
B95G76G60	\$ 48	3.753"	3.006"	2.37"	Caterpillar	3G5999, 3G5999
B95G76G62	\$ 44	3.740"	3.000"	2.45"	\$ REDUCED \$	Greasable
B95G76G63	\$ 78	3.752"	3.006"	2.50"	TESK, Greasable	2001
B95G76G70	\$ 98	3.753"	3.006"	2.75"	Hydraulic cylinder bush,	Greasable
B95G76G76	\$ 82!	3.752"	3.006"	3.00"	\$ REDUCED \$	Greasable
B95G76G82	\$ 84!	3.752"	3.006"	3.25"	\$ REDUCED \$	Greasable
B95G76G89	\$ 98	3.754"	3.006"	3.50"	Hydraulic cylinder bush,	Greasable
B95G76G102	\$ 106	3.752"	3.006"	4.00"	TESK, Greasable	2001
B95G76G120	\$ 70!	3.740"	3.000"	4.71"	\$ REDUCED \$	T66214, U43721
B95G76G121	\$ 102	3.752"	3.006"	4.75"	Hydraulic cylinder bush,	Greasable

PFERD Fan Grinders 6mm Shank
Aluminium Oxide - 120 Grit
Complete PFERD range available
Bulk orders available

KSet Popular Selection



Size	Code	Price
50 Dia x 30 w	TL-F5030/6 A120	\$ 9
60 Dia x 40 w	TL-F6040/6 A120	\$ 11
80 Dia x 50 w	TL-F8050/6 A120	\$ 15

Plus GST

Heavy Wall Bushes for 3" Diameter Shaft

B98G76G102	\$ 110	3.877"	3.006"	4.00"	O.S.TESK, Greaseable	2008
B100-76X75	\$ 120!	100.05mm	3.008"	2.95"	Eimco	A2U913-194150
B100T76X89	\$ 170	100.05mm	3.009"	3.503"	Eimco	A2U913-194148
B100-76X144	\$ 220	100.03mm	3.001"	5.68"	Eimco	A2U913-194265
B102G76G76	\$ 120	4.004"	3.006"	3.00"	Eimco	A2U913-194265
B102G76G102	\$ 140	4.004"	3.006"	4.00"	Hydraulic cylinder bush,	Greasable
B102G76G152	\$ 190	4.004"	3.006"	6.00"	Hydraulic cylinder bush,	Greasable
B114G76G96	\$ 130!	4.503"	3.002"	3.78"	Heavy Wall Bush / Boss,	Greasable
B133T76R67	\$ 248	5.255"	3.005"	2.636"	Eimco	A2U913-194149
B92-79-64	\$ 70	3.632"	3.139"	2.53"	D10 Lift Arm Bush	3G8052

Dimensions shown are for the KSet Bush, not for nearby OEM numbers

BUSHINGS
Quantity Discounts Available only upon request provided all outstanding invoices are settled within 7 Days
Discount for 4 of any line item \$6 ea
Discount for 10 of any line item \$9 ea
Discount for 20 of any line item \$12 ea

Pins and Bushes Shims and Seals Tools and Cutters

Minimum Product Order \$150
Prices subject to change without notice

Case Hardened Bushes - Precision Ground

Suit 80mm Diameter Shaft

KSet Part No.	Price	Outside	Inside	Length	Manufacture Notes	Locations
B85-80X70	EX GST \$106	85.07mm	80.15mm	70.0mm	.35kg 3125 2388 00	Atlas Copco
B90F80-17	\$ 44	90.00mm	80.19mm	17.0mm	D144162	Flange 94x4 Case
B90-80-20	\$ 44	90.00mm	80.20mm	20.0mm	D144170	Case 590
B90-80-30	\$ 48	90.01mm	80.18mm	29.6mm	.32kg 114318A1, 192559A1	Case 580
B90-80-50	\$ 68 !	90.17mm	80.29mm	50.0mm	.53kg 4196105	Hitachi EX350
B90G80G60	\$ 88	90.06mm	80.15mm	60.0mm	.59kg Hydraulic ram,Rod end	Greasable
B90-80-65	\$ 96	90.10mm	80.15mm	65.0mm	.68kg Suit Hitachi	Plain Bush
B90-80-80	\$ 98	90.10mm	80.15mm	80.0mm	.83kg Matbro	38738
B90G80G90	\$110	90.08mm	80.15mm	90.0mm	.92kg Kobelco	SK210-Bush-HR
B90G80G100	\$120	90.10mm	80.15mm	100.0mm	1.02kg Matbro	504227
B90-80G140	\$160	90.07mm	80.15mm	140.0mm	1.46kg Volvo	BML90C Small Z Link
B95-80-40	\$ 70	95.15mm	80.25mm	39.9mm	0.88kg 4352398	ZX200-Bush-HR-HL
B95-80-55	\$ 96	95.05mm	80.15mm	55.0mm	0.88kg 4107838	Hitachi
B95-80-65	\$ 88	95.05mm	80.15mm	65.0mm	1.04kg Hitachi	Excavator Bush
B95G80X65	\$ 80	95.18mm	80.29mm	64.9mm	1.04kg 4409178	ZX200-3-Bush-J O/B F8
B95G80X66	\$ 80	95.18mm	80.29mm	64.9mm	1.04kg 4443882	Hitachi ZX200-3-Bush-K O/B F8
B95G80X67	\$106 !	95.14mm	80.31mm*	67.0mm	1.05kg 207-70-53150	Komatsu OF8
B95G80X68	\$98 !	95.12mm	80.20mm	67.0mm	1.06kg \$ REDUCED \$	Less Clearance
B95-80-70	\$ 89	95.10mm	80.19mm	70.0mm	1.16kg Hitachi	EX200-Bush-J
B95G80X70	\$110	95.12mm	80.18mm	70.0mm	1.11kg Caterpillar	CAT320C-Bush-K
B95G80X75	\$ 98	95.08mm	80.31mm	75.0mm	1.18kg Komatsu	PC200, 220-Bush-HL
B95G80G78	\$ 90	95.10mm	80.28mm	78.0mm	1.23kg Hydraulic Ram Eye Greasable Bush	
B95G80X78	\$ 98	95.08mm	80.33mm*	78.0mm	1.20kg 707-76-80020	PC220-Bush-HR
B95G80X79	\$102	95.12mm	80.20mm	78.0mm	1.25kg Firmer Fit	Less Clearance
B95G80G80	\$ 98	95.18mm	80.25mm	80.0mm	1.24kg CAT320C-Bush-HL,J	195-0103
B95-80X80	\$ 98	95.13mm	80.30mm*	80.0mm	1.31kg 20Y-70-32351	Komatsu 21K-70-12161
B95F80X80	\$POA	95.13mm	80.15mm	80.0mm	Flange 160x8	Kobelco K909A
B95G80X81	\$ 98	95.12mm	80.20mm	81.0mm	1.30kg TESK Fig.8	2001
B95-80G85	\$ 80	95.21mm	80.23mm	85.1mm	1.32kg Cat-345-Bush-I	4I-6897
B95G80X85	\$120	95.05mm	80.15mm	85.0mm	1.32kg EX200-Bush-B	SE210-Bush-K,H
B95G80X86	\$106	95.09mm	80.22mm	86.0mm	PC220-Bush-B,C,D,E,G	2BF8 13W Ext
B95F80X88	\$190	95.13mm	80.15mm	88.0mm	2 kg Flange 140x8 Greasable external	
B95-80X89	\$108	95.16mm	80.29mm	89.0mm	Kobelco LC12B01763P1	SK350-Bush-I BF8
B95G80X90	\$108	95.14mm	80.33mm	90.0mm	1.39kg PC200,220-Bush-K	205-70-67150 OF8
B95G80X91	\$120	95.12mm	80.20mm	90.0mm	Kobelco SK220 "HL", SK330-8 "I"	
B95G80X95	\$124	95.10mm	80.16mm	95.0mm	1.50kg SK220-Bush-HR	HD700-Bush-HR
B95F80X95	\$144	95.11mm	80.35mm	95.0mm	2 kg Flange 130x7	205-70-72130 PC220-Bush-J
B95-80X98	\$130	95.15mm	80.14mm	98.5mm	1.56kg Kawasaki	KLD 80 Z1
B95G80G100	\$116	95.09mm	80.16mm	100 mm	1.64kg TESK	Greasable Bush
B95-80X100	\$130	95.10mm	80.18mm	100 mm	1.64kg Samsung	SE210-Bush-J OF8
B95G80X100	\$140	95.13mm	80.16mm	100 mm	1.64kg HD700 "HL"	CAT320C-Bush-HR
B95G80G104	\$140	95.10mm	80.15mm	104 mm	1.68kg CAT 087 5847	325B-Bush-J
B95G80X110	\$138 !	95.13mm	80.18mm	110 mm	1.63kg \$ REDUCED \$	TESK 2009 BF8
B95G80X125	\$190	95.13mm	80.18mm	125 mm	1.93kg Komatsu 205-70-71330	2x70 2F8

PFERD Economy Rolls
Complete PFERRD range available

KSet Popular Selection

Economy Rolls



Size	Code	Price
40 mm x 50 m	TL-ER 40A 60	\$ 34
40 mm x 50 m	TL-ER 40A 80	\$ 34
40 mm x 50 m	TL-ER 40A 120	\$ 34
40 mm x 50 m	TL-ER 40A 180	\$ 34

Plus GST

Frequently Asked Questions:

Where in America can I buy ready-made hardened steel bushes / bushings ?

KSet Engineering Pty Ltd

has 1,250 different size bushings available EX STOCK.
Delivery to USA takes 4 days.

BUSHINGS

Quantity **Discounts Available** only upon request provided all outstanding invoices are settled within 7 Days

Discount for **4** of any line item \$7 ea
Discount for **10** of any line item \$10 ea
Discount for **20** of any line item \$14 ea

Pins and Bushes
Shims and Seals
Tools and Cutters

Minimum Product Order \$150

Prices subject to change without notice

Dimensions shown are for the KSet Bush, not for nearby OEM numbers

Bushes for 80mm Diameter Shaft continued next page...

Case Hardened Bushes - Precision Ground

Heavy Wall Bushes for 80mm Diameter Shaft

KSet Part No.	Price EX GST	Outside	Inside	Length		Manufacture Notes	Locations
B98G80X67	\$130	98.13mm	80.20mm	67.0mm		O.S. PC220-Bush-HL	OF8
B98G80X78	\$140	98.13mm	80.20mm	78.0mm	1.50kg	O.S. PC220-Bush-HR	BF8
B98G80X90	\$150	98.13mm	80.20mm	90.0mm	1.70kg	O.S. PC200,220-Bush-K	OF8
B100-80-21	\$80	100.00mm	79.97mm	20.7mm	0.46kg	Case580SLE	1986794C1
B100F80-46	\$50	100.00mm	80.21mm	46.0mm		Flange 104x4.15	Case D151059
B100G80G50	\$74	100.13mm	80.21mm	50.0mm	1.06kg	TESK 2010	Greasable Bush
B100-80-80	\$98	100.13mm	80.22mm	80.0mm	1.77kg	TESK	Plain Bush
B100G80G80	\$110	100.13mm	80.22mm	80.0mm	1.81kg	TESK 2010	Greasable Bush
B100G80X90	\$150 !	100.13mm	80.21mm	90.0mm	1.98kg	\$ REDUCED \$	Cobra ZL 50G
B100G80X95	\$170	100.13mm	80.21mm	95.0mm	2.09kg	TESK 2010	BF8
B100G80X110	\$170	100.13mm	80.20mm	110 mm	2.42kg	O.S.TESK	2BF8
B100G80X139	\$220	100.13mm	80.23mm	139 mm		Samsung SE210-LC-BUSH-J	OF8
B105G80X95	\$180	105.13mm	80.17mm	95.0mm	2.69kg	TESK	BF8
B110F80X95	\$185	110.06mm	80.32mm	95.0mm	3.3 kg	Flange130x7	SK200,PC220-7-Bush-J
B110G80X100	\$200	110.13mm	80.26mm	99.9mm	3.48kg	O.S.TESK	Greasable Bush
B110G80X110	\$234	110.13mm	80.26mm	110 mm	3.84kg	O.S.TESK	Greasable Bush BF8
B115G80G96	\$130 !	115.08mm	80.05mm	96.0mm	4.90kg	Heavy Wall Bush / Boss,	Greasable

Suit 3.25" Diameter Shaft

B95-83-70	\$78	3.752"	3.257"	2.75"		7S3863	CAT983
B95G83G73	\$78	3.753"	3.257"	2.87"		Case Loader	Greasable Bush
B95F83-78	\$74	3.751"	3.255"	3.05"		Flange Bush	105mm x 5.7
B95G83G83	\$66	3.752"	3.261"	3.27"	1.13kg	3G8779	CAT960F, 962G-Bush-L,K
B95G83G95	\$58	3.753"	3.261"	3.74"	1.29kg	3G9191	Caterpillar
B95G83G102	\$96	3.754"	3.257"	4.00"	1.41kg	Testk 2009	Greasable Bush
B99G83G108	\$98	3.879"	3.257"	4.25"	1.53kg	Testk 2010	CAT966 Track Loader

Bushes for 85mm Diameter Shaft

B95-85-75	\$88	95.05mm	85.15mm	75.0mm		TESK 2003	Plain Bush
B95G85G80	\$76 !	95.08mm	85.15mm	80.0mm	0.93kg	\$ REDUCED \$	Greasable Bush
B95-85-100	\$100	95.05mm	85.15mm	100 mm	1.15kg	TESK 2006	Plain Bush
B95G85X125	\$140	95.10mm	85.25mm	125 mm		Some WA420s	WA420-Bush-L,K
B100G85X48	\$74	100.10mm	85.18mm	48.0mm		KATO 900-Bush-HL	BF8
B100F85-50	\$164	100.03mm	85.07mm	50.29	1.09kg	Flange 125x7.47	Sandvik 26433448
B100-85G80	\$110	100.10mm	85.20mm	80.0mm	1.35kg	419-70-11890	WA320-Bush-A
B100-85G85	\$106	100.10mm	85.18mm	85.0mm	1.43kg	424-70-11810	WA420,450-J
B100G85G85	\$110	100.10mm	85.20mm	85.0mm	1.42kg	Komatsu	WA420-Bush-L,K
B100N85G85	\$120 !	100.12mm	85.22mm	84.8mm	1.36kg	423-70-21810	WA380,420-Bush-J
B100G85X98	\$168	100.10mm	85.18mm	98.0mm	1.63kg	KATO 900-Bush-HDL	BF8
B100G85G100	\$120	100.07mm	85.12mm	100 mm	1.67kg	424-70-11820	WA420-Bush-L,K
B100G85X105	\$120	100.10mm	85.18mm	105 mm		KATO 800-Bush-J	OF8
B103G85G100	\$140	103.10mm	85.18mm	100 mm		O.S. TESK	Greasable Bush
B115G85G96	\$130 !	115.08mm	85.05mm	96.0mm	3.48kg	Heavy Wall Bush / Boss,	Greasable

Dimensions shown are for the KSet Bush, not for nearby OEM numbers
KSet Engineers design bushes to suit market requirements
Example: A neater fit to shafts and pins.

PFERD Economy Rolls
Complete PFERD range available

KSet Popular Selection

Economy Rolls



Size	Code	Price
40 mm x 50 m	TL-ER 40A 60	\$ 34
40 mm x 50 m	TL-ER 40A 80	\$ 34
40 mm x 50 m	TL-ER 40A 120	\$ 34
40 mm x 50 m	TL-ER 40A 180	\$ 34

Plus GST

BUSHINGS
Quantity Discounts Available only upon request provided all outstanding invoices are settled within 7 Days

Discount for 4 of any line item \$7 ea
Discount for 10 of any line item \$10 ea
Discount for 20 of any line item \$14 ea

Pins and Bushes
Shims and Seals
Tools and Cutters

Minimum Product Order \$150
Prices subject to change without notice

Case Hardened Bushes - Precision Ground

Suit 3 1/2" Diameter Shaft

KSet Part No.	Price	Outside	Inside	Length	Manufacture Notes	Locations
EX GST						
B99-89N100	\$140	3.921"	3.508"	3.94"	2 ONLY Int. Helical Groove	
B100-89-57	\$50	3.954"	3.504"	1.69"	Plain Bush	3 only
B102F89-43	\$88	4.002"	3.506"	1.69"	0.52kg Flange Bush	A2U913-194032
B102-89-44	\$82	4.004"	3.521"	1.75"	0.67kg Caterpillar	Sub for 4J2379
B102-89-49	\$82	4.003"	3.507"	1.93"	0.73kg Caterpillar	Sub for 5J1193
B102-89-51	\$88	4.002"	3.505"	2.00"	0.77kg TESK	Plain Bush
B102-89G64	\$98	4.006"	3.510"	2.50"	0.95kg Caterpillar	Internal Groove
B102-89G75	\$98	4.002"	3.506"	2.97"	1.15kg Caterpillar	Sub for 7K9576
B102-89-76	\$60 !	4.003"	3.518"	3.01"	1.15kg \$ REDUCED \$	Sub for 1J5304
B102G89G76	\$88 !	4.002"	3.506"	2.99"	1.15kg Caterpillar	Sub for 7K9576
B102G89G77	\$72	4.004"	3.510"	3.00"	1.15kg Caterpillar	Sub for 9J6549
B102G89G82	\$78	4.003"	3.511"	3.27"	1.26kg Caterpillar	Sub for 3G7624
B102-89G94	\$68	4.002"	3.506"	3.70"	1.44kg Caterpillar	Sub for 5K7037
B102-89-95	\$62 !	4.003"	3.507"	3.75"	\$ REDUCED \$	CAT983 7J7887
B102G89G95	\$90	4.005"	3.516"	3.75"	Caterpillar	Sub for 9J7099
B102G89X101	\$110	4.004"	3.505"	4.00"	1.45kg TESK 2010	Greasable BF8
B102G89X108	\$124	4.004"	3.505"	4.25"	1.55kg Scandinavian	Greasable BF8
B102G89G111	\$98	4.007"	3.517"	4.36"	T 9J7100	CAT-966G-Bush-D
B103G89N102	\$140	4.032"	3.506"	4.00"	1.4kg Hydraulic Cylinder	Joy 100163419
B104G89-27	\$48	4.133"	3.503"	1.08"	T CAT-950-Bush-BR	9K9159
B104G89G76	\$98	4.129"	3.505"	3.00"	TESK 2004	Greasable
B104G89G82	\$90	4.128"	3.512"	3.24"	T CAT-966G-Bush-L,K	4V8520
B104G89G89	\$88	4.129"	3.505"	3.50"	TESK 2002	Greasable
B104G89G94	\$98	4.128"	3.512"	3.70"	T CAT-980C,F,G-Bush-D,E	1V8242
B104G89G102	\$120	4.129"	3.505"	4.00"	1.kg Caterpillar	Sub for 6K71571
B104-89G110	\$98	4.128"	3.510"	4.33"	U CAT-950-962-Bush-A	3V2333
B104G89G111	\$98	4.128"	3.512"	4.37"	Greasable	Case Hardened Bush
B104-89G120	\$98	4.128"	3.513"	4.75"	CAT-966G 972-Bush-A	4V8673
B108-89-46	\$88	4.253"	3.507"	1.83"	CAT983 Plain Bearing	4J2379
B108-89-57	\$87	4.253"	3.508"	2.24"	1.35kg CAT983 Plain Bearing	8K7677
B108-89-64	\$97	4.253"	3.507"	2.50"	CAT Plain Bearing	5K4787
B108-89-67	\$99	4.253"	3.510"	2.65"	1.60kg CAT983 Plain Bearing	8K7613
B108-89-101	\$130	4.253"	3.507"	3.98"	2.30kg TESK 2002	Plain Bearing
B110-89X75	\$110	4.332"	3.505"	2.95"	1.88kg Eimco	A2U130-194277
B112-89-68	\$110	4.411"	3.513"	2.66"	Caterpillar 185-7221	Plain Bearing
B114-89-38	\$80	4.502"	3.504"	1.50"	CAT 28 Ripper	Plain Bearing
B114-89-51	\$70	4.507"	3.529"	2.00"	1.58kg 4T9751 Ripper Group	Bearing
B114G89G57	\$98	4.502"	3.508"	2.25"	1.76kg TESK 2003	Greasable
B114-89-64	\$98	4.503"	3.507"	2.50"	2.00kg CAT983	Sub for 7K1513
B114-89-73	\$98	4.504"	3.506"	2.87"	2.30kg Caterpillar	Sub for 7J0052
B114-89-76	\$98	4.505"	3.508"	3.00"	2.39kg TESK 2009	Plain Bushing
B114-89G85	\$98	4.504"	3.517"	3.35"	Caterpillar D9	Sub for 3G6402
B114G89G96	\$130	4.504"	3.502"	3.78"	3.05kg Heavy Wall Bush/Boss	Greasable
B115G89X114	\$180	4.530"	3.510"	4.50"	Logmax	Greasable BF8
B120-89-75	\$120 !	120.10mm	3.506"	2.95"	kg Heavy Wall Bush	Plain
B121-89X108	\$170	4.754"	3.508"	4.25"	4.35 kg Type X Bush	Greasable BF8
B125-89-80	\$130 !	125.10mm	3.506"	3.15"	kg Heavy Wall Bush	Plain

Grease for Hardened Bushes

Renolit XTB2 450g

Long life multipurpose grease specially designed for extreme bearing applications. Suits a variety of automotive applications, including wheel bearing and general chassis lubrication

Product Code : GR-XTB2 \$10 ea + GST



Grease for Pin Steel
Grease for Excavator Bushes
Maitland Hunter Valley NSW

BUSHINGS

Quantity Discounts Available only upon request provided all outstanding invoices are settled within 7 Days

Discount for 4 of any line item \$8 ea

Discount for 10 of any line item \$11 ea

Discount for 20 of any line item \$14 ea

Pins and Bushes

Minimum Product Order \$150

Prices subject to change without notice

Dimensions shown are for the KSet Bush, not for nearby OEM numbers
KSet Engineers design bushes to suit market requirements
Example: A neater fit to shafts and pins.

Case Hardened Bushes - Precision Ground

Suit 90mm Diameter Shaft

KSet Part No.	Price EX GST	Outside	Inside	Length		Manufacture Notes	Locations
B100-90-70	\$110	100.12mm	90.15mm	70mm	0.80kg	TESK 2011	Plain Bush
B100F90N74	\$166	100.06mm	90.13mm	74mm	1.12kg	FLange Bush	FBL - 503140
B100G90G75	\$140	100.10mm	90.15mm	75mm	0.86kg	TESK 2010	Greasable
B100-90-80	\$98!	100.12mm	90.15mm	80mm	0.90kg	\$ REDUCED \$	Plain Bush
B100G90G100	\$180	100.10mm	90.15mm	100mm	1.15kg	Volvo	L 180 2 Required
B100G90G137	\$210!	100.10mm	90.16mm	137mm	2.44kg	\$ REDUCED \$	Volvo L 180 2 Rqd
B105G90G49	\$98!	105.15mm	90.23mm	49.3mm	0.90kg	ZX350-Bush-I	Offset Groove
B105G90G50	\$120	105.12mm	90.25mm	50mm	0.90kg	107-4161-3000	Kato 1250-H,G,L
B105-90-55	\$114	105.10mm	90.16mm	55mm	1.00kg	Hitachi	EX300-Bush-I
B105-90-60	\$117	105.10mm	90.20mm	60mm	1.12kg	TESK 2002	Plain Bush
B105-90-70	\$90!	105.13mm	90.27mm	70mm	1.26kg	\$ REDUCED \$	Hitachi 4203425
B105-90X70	\$98!	105.10mm	90.16mm	70mm	1.25kg	205-70-66550	PC200-Bush-F 2xOF8
B105G90X70	\$128!	105.10mm	90.16mm	70mm	1.24kg	\$ REDUCED \$	2xBF8
B105G90X85	\$130!	105.18mm	90.28mm	85mm	1.45kg	3038451	EX350-F - EX200-B,C,F
B105G90X88	\$128!	105.14mm	90.16mm	88mm	1.55kg	207-63-76170	PC300-Bush-HR
B105G90G90	\$110	105.13mm	90.18mm	90mm	1.60kg	TESK 2001	Greasable
B105G90X90	\$128	105.14mm	90.16mm	90mm	1.59kg	Komatsu	PC300-Bush-HL, K
B105-90X92	\$128	105.10mm	90.23mm	92mm	1.62kg	Komatsu	PC300-Bush-I OF8
B105G90X95	\$128	105.13mm	90.30mm	95mm	1.69kg	SK330-6-K	& Kato 1250-HL
B105G90X102	\$160	105.12mm	90.20mm	102mm	1.80kg	Kobelco	SK330-6 "HL" BF8
B105G90X105	\$140	105.11mm	90.20mm	104.5mm	1.80kg	Volvo	VOE1451 7940 2BF8
B105G90X109	\$160	105.09mm	90.24mm	109.4mm	1.83kg	Hitachi ZX450 Light Duty	0937502
B105G90X110	\$160	105.10mm	90.20mm	110mm		Kato 1250 "G"	Greasable
B105G90X112	\$160	105.11mm	90.18mm	112mm	1.89kg	Kobelco	SK220-F & SK330-8-HL
B105-90X114	\$140	105.14mm	90.27mm	114mm	Kobelco	LC12B01761P1	SK350-8-Bush
B105G90X114	\$140	105.14mm	90.27mm	114mm	Kobelco	LC12B01781P1	SK350-8-Bush-HL
B105G90X114	\$140	105.14mm	90.27mm	114mm	Kobelco	LC01V00006S023	SK350-8-Bush-HR
B105G90X115	\$160	105.14mm	90.21mm	115mm	Kobelco	SK330-8-HR,J	Kato 1250-HR
B105G90X120	\$210	105.13mm	90.28mm	120mm	2.11kg	VOE 14880984	Kato 1250-Bush-B
B105G90X130	\$174	105.13mm	90.25mm	130mm	2.24kg	Komatsu	PC200-Bush-A
B106G90G90	\$101	106.18mm	90.25mm	90mm		Laser Scraper	Bucket Bush
B106M90G90	\$102	106.18mm	90.25mm	90mm		CAT325-Bush-J	Ext Slot 7Y3553
B106M90G100	\$110	106.18mm	90.25mm	100mm		CAT333-Bush-J	External slot

Heavy Wall Bushes for 90mm Diameter Shaft

B110G90X73	\$154	110.14mm	90.21mm	73mm	1.74kg	KATO 1250 "K"	Greasable
B110-90-80	\$88!	110.12mm	90.15mm	80mm	1.84kg	! On Special !	Plain Bush
B110-90X100	\$199	110.14mm	90.21mm	100mm	2.44kg	KATO 1250 "J"	2xOF8
B110G90X100	\$170!	110.15mm	90.24mm	100mm	2.40kg	! On Special !	Greasable BF8
B110F90X102	\$228	110.18mm	90.24mm	102mm	3.24kg	Flange 150x8	PC300-Bush-6-J 2F8
B110G90N113G	\$210	110.02mm	90.05mm	113mm	2.66kg	Twin Grooves	A2U900-194346
B115G90X100	\$180!	115.13mm	90.18mm	100mm	3.12kg	\$ REDUCED \$	Greasable BF8
B120F90X100	\$460	120.15mm	90.25mm	100mm	4.88kg	Flange 185x10.6	SH300-2-Bush-J O/BF8x2
B120F90X105	\$340	120.18mm	90.33mm	105.9mm	4.10kg	Flange 155x6	SK250/260-Bush-J OF8x2
B120F90X106	\$240!	120.14mm	90.36mm	105.9mm	4.16kg	Flange 150x7.5	PC350-7-Bush-J OF8x2
B120G90G110	\$180!	120.14mm	90.30mm	110 mm		\$ One Only \$	Greasable
B120G90X110	\$210!	120.14mm	90.29mm	110 mm	4.22kg	\$ REDUCED \$	Greasable BF8
B120F90X126	\$274	120.14mm	90.29mm	125.7	SK350LC	LC12B01653P1	+ LC12B01761P1 O,BF8

Dimensions shown are for the KSet Bush, not for nearby OEM numbers

Grease for Hardened Bushes

Renolit XTB2 450g

Long life multipurpose grease specially designed for extreme bearing applications. Suits a variety of automotive applications, including wheel bearing and general chassis lubrication

Product Code : GR-XTB2 \$10 ea + GST



Grease for Pin Steel
Grease for Excavator Bushes
Maitland Hunter Valley NSW

BUSHINGS

Quantity Discounts Available only upon request provided all outstanding invoices are settled within 7 Days

Discount for 4 of any line item \$8 ea

Discount for 10 of any line item \$11 ea

Discount for 20 of any line item \$14 ea

Pins and Bushes

Minimum Product Order \$150

Prices subject to change without notice

Case Hardened Bushes - Precision Ground

Suit 95mm Diameter Shaft

KSet Part No.	Price EX GST	Outside	Inside	Length		Manufacture Notes	Locations
B110G95G70	\$ 98	110.13mm	95.20mm	70.0mm	1.33kg	707-76-95050	WA320-Bush-D,E
B110-95-72	\$ 98	110.15mm	95.20mm	72.0mm	1.40kg	707-76-95040	WA420-3
B110-95G80	\$ 90	110.13mm	95.20mm	80.0mm		427-70-11870	707-76-95010
B110-95X80	\$ 118	110.10mm	95.22mm	79.8mm	1.49kg	424-70-11770	WA380,420-Bush-C
B110-95X81	\$ 118	110.13mm	95.20mm	80.0mm	1.49kg	Komatsu	WA320-Bush-F OF8
B110-95G90	\$ 110	110.13mm	95.20mm	90.0mm		385-1007-0591	W120-2
B110G95X90	\$ 140	110.13mm	95.20mm	90.0mm		385-1007-0611	W120-2
B110G95X95	\$ 120!	110.14mm	95.20mm	95.0mm	1.80kg	421-70-11241	WA470-Bush-J
B110N95G95	\$ 120!	110.11mm	95.29mm	94.8mm	1.80kg	421-70-21240	WA470-1-Bush-J
B110G95X105	\$ 150	110.14mm	95.20mm	104.9mm		424-70-11890	WA420-Bush-A
B110G95X115	\$ 150	110.14mm	95.27mm	114.9mm	2.16kg	421-70-11251	WA470-Bush-L,K

Heavy Wall Bushes for 95mm Diameter Shaft

B115G95X115	\$ 194	115.14mm	95.28mm	114.8mm		TESK 2009	Greasable BF8
-------------	--------	----------	---------	---------	--	-----------	---------------

Heavy Wall Bushes for 3.75" Diameter Shaft

B114G96G88	\$ 98	4.506"	3.763"	3.48"	2.12kg	1V6934	CAT988B Bkt/Link
B114G96G107	\$ 98	4.505"	3.763"	4.21"	2.57kg	Caterpillar	1V7036
B121-96-76	\$ 98	4.751"	3.754"	3.00"		Caterpillar	CAT980-Bush-J
B121G96N140	\$ 120	4.754"	3.759"	5.50"		Caterpillar	CAT 980

Wear Life of Pin Materials

4140 Hardened & Tempered 29 Rockwell C
as available from steel merchants

K1045 - INDUCTION HARDENED 58 Rockwell C
58 Rockwell C (615 Brinell) resists wear about **10 times better** and longer than 29 Rockwell C

4140 - INDUCTION HARDENED 58 Rockwell C - Very Resistant to Breakage
58 Rockwell C (615 Brinell) resists wear about **12 times better** and longer than 29 Rockwell C

Grease for Hardened Bushes

Renolit XTB2 450g

Long life multipurpose grease specially designed for extreme bearing applications. Suits a variety of automotive applications, including wheel bearing and general chassis lubrication

Product Code : GR-XTB2 \$10 ea + GST



Grease for Pin Steel
Grease for Excavator Bushes
Maitland Hunter Valley NSW

BUSHINGS

Quantity **Discounts Available** only upon request provided all outstanding invoices are settled within 7 Days

Discount for **4** of any line item **\$8** ea

Discount for **10** of any line item **\$11** ea

Discount for **20** of any line item **\$14** ea

Pins and Bushes

Minimum Product Order \$150

Prices subject to change without notice

Case Hardened Bushes - Precision Ground

Suit 100mm Diameter Shaft

KSet Part No.	Price	Outside	Inside	Length	Manufacture Notes	Locations
EX GST						
B110G100G78	\$ 110	110.10mm	100.15mm	78.0mm	TESK 2012	Greasable
B110-100-100	\$180!	110.12mm	100.16mm	100.0mm	1.29kg \$ REDUCED \$	Volvo L 180 4 Rqd
B110-100G140	\$220!	110.12mm	100.17mm	140.0mm	\$ REDUCED \$	Volvo L 180 2 Rqd
B115-100-52	\$ 90!	115.12mm	100.20mm	51.7mm	1.04kg 381857S	ZX350-Bush-HR,HL(6)
B115-100-60	\$ 110	115.15mm	100.30mm	59.7mm	1.35kg Hitachi	3026075
B115-100-65	\$ 90!	115.15mm	100.29mm	65.0mm	1.29kg Hitachi	EX300-Bush-J
B115G100G70	\$120!	115.13mm	100.21mm	69.8mm	1.38kg Groove 25 frm Cfr	ZX350-Bush-J,K
B115G100X74	\$140!	115.15mm	100.20mm	74.0mm	20T-70-71520	PC45-Bush-T
B115-100X79	\$ 140	115.10mm	100.21mm	79.5mm	Volvo VOE 1488 0987	O,BF8
B115G100X80	\$ 148	115.15mm	100.20mm	80.0mm	1.49kg TESK 2001	BF8
B115G100G85	\$ 120	115.15mm	100.20mm	85.0mm	1.65kg TESK 2003	Greasable
B115G100X90	\$ 156	115.12mm	100.27mm	90.0mm	1.73kg Hitachi	EX200-Bush-A
B115-100X95	\$ 140	115.15mm	100.20mm	95.0mm	208-70-13141	PC400-Bush-I
B115G100X95	\$ 140	115.15mm	100.20mm	95.0mm	1.84kg 707-76-10230	PC400-Bush-B,K
B115G100X98	\$ 140	115.10mm	100.23mm	97.5mm	1.90kg VOE 1451 7186	2BF8
B115-100X100	\$ 140	115.11mm	100.24mm	99.5mm	VOE1488 0988	EC460-Bush-I
B115G100X105	\$ 140	115.15mm	100.18mm	105.7mm	2.04kg 207-70-51440	PC300-Bush-C,D,E
B115G100G108	\$ 166	115.10mm	100.18mm	108.0mm	2.11kg Hitachi	ZX300-Bush-HR
B115G100X108	\$170!	115.10mm	100.18mm	108.0mm	2.10kg Komatsu	PC450-LC-Bush-HL
B115G100X109	\$180!	115.09mm	100.23mm	109.4mm	2.11kg Hitachi ZX450	0937504 BF8
B115G100X110	\$180!	115.12mm	100.19mm	110.0mm	2.13kg CAT320	CAT 350 BF8
B115G100X111	\$ 180	115.10mm	100.18mm	111.0mm	2.13kg TESK 2003	O/B FIG 8
B115G100X120	\$ 198	115.11mm	100.31mm	120.0mm	2.31kg Volvo EC330CL	VOE1488 0985
B115G100X130	\$ 198	115.10mm	100.25mm	129.7mm	2.70kg 206-70-61310	PC220-Bush-A 2F8
B116F100N87	\$280!	116.05mm	100.10mm	87.05	1.92kg Flange Bush	FBL10-Bush-J
B116G100G100	\$120!	116.20mm	100.29mm	100.0mm	2.25kg 7Y2397	CAT345-Bush-K
B116G100G120	\$ 130	116.20mm	100.24mm	120.0mm	2.55kg 087-5546	CAT450-Bush-HR
B116-100X130	\$ 260	116.15mm	100.20mm	129.7mm	2.70kg Caterpillar	CAT325-Bush-F

Heavy Wall Bushes for 100mm Diameter Shaft

KSet Part No.	Price	Outside	Inside	Length	Manufacture Notes	Locations
EX GST						
B117G100X95	\$180!	117.12mm	100.20mm	95.0mm	2.11kg TESK 2009	BF8
B120G100-21	\$ 85	119.99mm	100.43mm	21.0mm	Case580 SLE	4W Ext D147280
B120G100-25	\$ 85	119.99mm	100.43mm	25.0mm	Case580 SLE	4W Ext 101907A1
B120G100G70	\$140!	120.05mm	100.15mm	70.0mm	2.00kg TESK 2013	Greasable
B120-100-75	\$140!	120.05mm	100.15mm	75.0mm	2.04kg TESK 2002	Plain Bush
B120G100X115	\$160!	120.16mm	100.21mm	115.0mm	3.06kg \$ REDUCED \$	BF8
B120F100X125	\$ 240	120.16mm	100.20mm	125.0mm	208-70-32140 Flange 166 Ø	PC400-Bush-J
B120G100X150	\$ 260	120.16mm	100.22mm	150.0mm	4.00kg TESK 12mm W Ext	BF8
B127-100-75	\$ 260	127.30mm	100.20mm	75.0mm	4.00kg Plain Bush	Heavy Wall
B130F100X106	\$ 338	130.18mm	100.32mm	105.8mm	4.68kg Flange 166 Ø x7.5	PC450-8-Bush-J
B130G100X114	\$ 360	130.16mm	100.22mm	114.0mm	4.67kg TESK 2012	BF8
B135G100G100	\$220!	135.15mm	100.22mm	100.0mm	4.96kg \$ REDUCED \$	Greasable

Dimensions shown are for the KSet Bush, not for nearby OEM numbers

Grease for Hardened Bushes

Renolit XTB2 450g

Long life multipurpose grease specially designed for extreme bearing applications. Suits a variety of automotive applications, including wheel bearing and general chassis lubrication

Product Code : GR-XTB2 \$10 ea + GST



Grease for Pin Steel
Grease for Excavator Bushes
Maitland Hunter Valley NSW

BUSHINGS

Quantity Discounts Available only upon request provided all outstanding invoices are settled within 7 Days

Discount for 4 of any line item \$8 ea

Discount for 10 of any line item \$11 ea

Discount for 20 of any line item \$14 ea

Pins and Bushes

Minimum Product Order \$150

Prices subject to change without notice

Case Hardened Bushes - Precision Ground

Suit 4 inch to 4.25" Diameter Shaft

KSet Part No.	Price EX GST	Outside	Inside	Length		Manufacture Notes	Locations
B114G102X76	\$120!	4.503"	4.009"	3.00"	1.24 kg	\$ Reduced Eimco A2U913 194013	
B114-101-101	\$ 140	4.504"	3.999"	4.00"	1.70 kg	Task Sleeve, Static Fit	
B114-102-102	\$150!	4.504"	4.009"	4.00"	1.70 kg	\$ Reduced \$ 3mmStep	
B114G102X121	\$ 180	4.504"	4.008"	4.75"		Task 2007 BF8 groove	
B114-102X127	\$ 180	4.504"	4.006"	5.00"	2.12kg	Task 2007 10 Only	
B115G102G101	\$ 200	4.542"	4.045"	3.97"		JOY 100163419 Was Al Bronze	
B115G102X102	\$ 220	4.538"	4.006"	4.00"		Hydraulic Cylinder JOY 100163419	
B118-102-50	\$ 100	4.629"	4.012"	1.97"		Caterpillar D11 MDS	
B118-102-60	\$ 88	4.630"	4.013"	2.37"		Caterpillar 4V2879	
B118-102-76	\$ 98	4.635"	4.010"	3.00"		Caterpillar 145-8737	
B118G102G89	\$ 88	4.630"	4.007"	3.50"	1.88 kg	Hydraulic cylinder bush Greasable	

Heavy Wall Bushes for 4" Diameter Shaft

B120-102-50	\$ 75!	120.12mm	4.006"	1.97"		\$ Reduced \$	Bucket
B121-102-63	\$ 160	4.752"	4.0085"	2.48"		0501-10097	Plain Bush
B121G102G70	\$ 110	4.754"	4.007"	2.75"	1.78 kg	Caterpillar	7K9545
B121G102G89	\$ 120	4.754"	4.007"	3.50"	2.39 kg	Task Type I	Greasable
B121G102G108	\$ 140	4.754"	4.007"	4.25"	2.90 kg	Caterpillar	7K9532
B125-102-65	\$ 75!	125.12mm	4.006"	2.56"		\$ Reduced \$	Bucket
B127-102X90	\$ 150	5.006"	4.007"	3.51"		Task TYPE X O/BF8 Groove	
B127-102G110	\$165!	5.005"	4.016"	4.33"		\$ Reduced \$ Caterpillar 3T9658	
B127G102G127	\$ 190	5.004"	4.006"	5.00"		Upsized OD For 5K7991	

Suit 105mm Diameter Shaft

B120G105X75	\$ 120	120.15mm	105.25mm	75.0mm	1.51kg	Kato HD1250-BUSH-HL	
B120G105X100	\$ 180	120.15mm	105.25mm	100.0mm	2.03kg	Kato HD1250-BUSH-C	
B120G105X110	\$ 210	120.15mm	105.25mm	110.0mm		SH330-HR & HD-1250-D,E	
B120G105X150	\$ 250	120.17mm	105.25mm	150.0mm		Unbored \$ 200	
B120G105X157	\$ 290	120.15mm	105.25mm	157.0mm		Kato 1250 BF8 Groove	
B125G105X120	\$230!	125.15mm	105.22mm	120.0mm		\$ Reduced \$ Cobra ZL 50G BF8	
B130G105X160	\$ 298	130.17mm	105.25mm	160.0mm		Heavy Wall Greasable Bush	

Suit 4.25" Diameter Shaft

B121G108-101	\$ 120	121.26mm	108.50mm	101.0mm		JOY External Groove Only	
B121G108G118	\$ 130	4.755"	4.264"	4.64"		1V8241 CAT988C,F,G-Bush-B,C	
B124G108G101	\$ 150	4.881"	4.263"	3.97"		Caterpillar 5J8363	
B127-102-51	\$ 150	4.995"	4.245"	2.00"		Hydraulic and Pneumatic	

Dimensions shown are for the KSet Bush, not for nearby OEM numbers
KSet Engineers design bushes to suit market requirements
Example: A neater fit to shafts and pins.

KSet Aftermarket Spares for:

Caterpillar Crawler Parts - Hitachi Spare Parts - Kobelco Spare Parts - Komatsu Spare Parts

Grease for Hardened Bushes

Renolit XTB2 450g

Long life multipurpose grease specially designed for extreme bearing applications. Suits a variety of automotive applications, including wheel bearing and general chassis lubrication

Product Code : GR-XTB2 \$10 ea + GST



Grease for Pin Steel
Grease for Excavator Bushes
Maitland Hunter Valley NSW

BUSHINGS

Quantity **Discounts Available** only upon request provided all outstanding invoices are settled within 7 Days

Discount for 4 of any line item \$8 ea

Discount for 10 of any line item \$11 ea

Discount for 20 of any line item \$14 ea

Pins and Bushes

Minimum Product Order **\$150**

Prices subject to change without notice

Case Hardened Bushes - Precision Ground

Suit 110mm Diameter Shaft

KSet Part No.	Price EX GST	Outside	Inside	Length	Manufacture Notes	Locations
B125-110-45	\$108	125.18mm	110.28mm	45.0mm	0.97kg Hitachi 4381855 8 rqd	EX350-Bush-B,C
B125-110-54	\$100	125.17mm	110.27mm	53.8mm	1.17kg Hitachi 4381859	EX350-Bush-D,E
B125-110G90	\$130	125.06mm	110.22mm	89.8mm	1.94kg 707-76-11030	WA480-5-Bush-B
B125G110G90	\$130	125.07mm	110.18mm	89.8mm	1.94kg Komatsu	WA380,420-Bush-D,E
B125G110X90	\$146	125.14mm	110.28mm	89.9mm	1.95kg 421-70-11381	WA450,470-Bush-C
B125-110G100	\$136	125.10mm	110.21mm	99.5mm	2.13kg 707-76-11040	WA450,470-Bush-B
B125G110X100	\$170	125.15mm	110.20mm	100.0mm	2.10kg 207-70-12161	PC600-I PC300-Bush-F
B125G110X101	\$140	125.20mm	110.34mm	100.0mm	2.10kg 3055478	Hitachi EX350-Bush-A
B125-110G105	\$135	125.16mm	110.28mm	104.8mm	2.23kg 421-70-11261	WA450,470-Bush-A
B125G110X112	\$190	125.13mm	110.28mm	112.4mm	2.40kg VOE1451 5557	Volvo EC460-Bush-HR
B125G110X114	\$190	125.18mm	110.31mm	114.0mm	2.40kg Hitachi	EX350-Bush-F
B125G110X116	\$168	125.07mm	110.34mm	115.7mm	2.50kg PC400-Bush-C,D,E,	PC600-Bush-HR
B125G110G120	\$200	125.15mm	110.30mm	119.6mm	2.51kg 425-70-11820	WA480,500-Bush-K,L
B125G110X124	\$230	125.12mm	110.24mm	124.1mm	2.68kg 46600855	Hitachi ZX450 Heavy Duty
B125G110X126	\$210	125.15mm	110.20mm	126.0mm	2.68kg Hitachi	EX350-Dogbone
B125G110X137	\$220	125.13mm	110.24mm	136.5mm	2.95kg VOE1451 5335	EC460-Bush-HL
B125G110X140	\$160	125.15mm	110.20mm	140.0mm	2.98kg PC300-Bush-A	PC850-Bush-F PC600-Bush-HL
B125-110X155	\$240	125.14mm	110.35mm	154.8mm	3.26kg 425-70-11730	WA500-Bush-J
B125G110X160	\$220	125.10mm	110.39mm	160.0mm	3.38kg Tesk	Extra external groove
B130F110X72	\$250	130.22mm	110.31mm	72.0mm	425-70-11341, 43 2 rqd	WA500-Bush-F
B130G110X85	\$240	130.20mm	110.26mm	85.0mm	2.52kg 3079233	Hitachi ZX450
B130G110X123	\$284	130.22mm	110.28mm	122.6mm	3.96kg 3060476	Hitachi ZX450-Bush-H,L,K
B130G110X140	\$290!	130.15mm	110.20mm	140.0mm	4.15kg \$ Reduced \$	BF8 Groove
B135-110-90	\$196!	135.15mm	110.28mm	90.0mm	3.40kg \$ Reduced \$	Plain Bush
B135G110X99	\$225	135.17mm	110.20mm	99.5mm	3.62kg VOE1457 1194	2BF8 Volvo
B135-110-100	\$178!	135.15mm	110.28mm	100.0mm	3.77kg \$ Reduced \$	Plain Bush
B135G110G110R	\$210	135.06mm	110.27mm	109.9mm	3.85kg 707-76-11050	WA420-Bush-D,E
B135G110G120	\$290	135.15mm	110.24mm	119.5mm	4.56kg VOE1457 0425	EC700-Bush-H
B140G110G126	\$340	140.14mm	110.20mm	126.0mm	5.79kg Heavy Wall	Greasable

Suit 4.5 Inch Diameter Shaft

B133G114G130	\$120	5.255"	4.513"	5.12"	1V8240	CAT980C,F,G-Bush-A
B133G114G150	\$120	5.258"	4.515"	5.91"	5V1386	CAT950B,E,F-Bush-F
B133G114G184	\$150	5.255"	4.516"	7.22"	1V7001	CAT983,988B-Bush-K
B140-114-35	\$60	5.506"	4.519"	1.38"	Bucket Ear	Pivot Bush
B140-114-67	\$98	5.504"	4.518"	2.63"	9J1914	D11 Ripper
B140-114-117	\$160	5.506"	4.519"	4.62"	4T3845	Caterpillar
B135G115X132	\$250	135.23mm	115.39mm	131.8mm	3.9kg 209-72-53170	PC600,800-Bush-I,K
B135F115X150	\$360	135.22mm	115.49mm	149.7mm	5.74kg Flange Bush	PC650-6-Bush-J OF8x2

Suit 120mm Diameter Shaft

B130-120G145	\$280	130.14mm	120.19mm	145.0mm	3.45kg Volvo	2 Required L180
B135G120G95	\$186	135.10mm	120.20mm	94.5mm	2.30kg 707-76-12030	WA450,470-Bush-E
B135-120X100	\$210	135.11mm	120.32mm	99.8mm	2.35kg 707-76-12041	WA500-Bush-B,C
B135G120G105	\$195	135.10mm	120.18mm	104.5mm	2.40kg 707-76-12130	WA450,470-Bush-D
B135-120X112	\$198	135.17mm	120.38mm	112.0mm	2.60kg 208-70-61521	PC400-Bush-F
B135G120X112	\$220	135.17mm	120.38mm	112.0mm	2.60kg Tesk 2006	Greasable Bush BF8
B135G120X120	\$250	135.15mm	120.24mm	120.0mm	2.80kg 707-76-12140	WA480,500-Bush-D,E
B135-120X130	\$310	135.15mm	120.36mm	129.7mm	2.98kg EC700Bush-J OF8	WA500-6-ABC BF8
B135G120X130	\$310	135.15mm	120.36mm	129.7mm	2.98kg Volvo	EC700-Bush-K
B135G120X155	\$360	135.15mm	120.36mm	154.8mm	3.65kg 425-70-31830	WA500-6-Bush-J
B135G120X160	\$274	135.20mm	120.37mm	159.8mm	3.77kg 208-70-51410, 31220	PC400-Bush-A
B135G120G175	\$316	135.15mm	120.24mm	175.0mm	4.20kg 424-70-11860	WA380,420-Bush-F
B133-121H57	\$98	5.255"	4.750"	2.23"	A2U913-194034	Eimco Unhardened
B133-121-64	\$140	5.255"	4.749"	2.50"	935-2939313	Eimco

KNIFE \$ 14.00 ea
Yellow Ultra Grip
Retractable, 0.27 kg
Code:TL-115Y

6 Pack; **KNIVES** \$ 68.00 / 6
Yellow Ultra Grip
TL6-115Y



BUSHINGS
Quantity Discounts Available only upon request provided all outstanding invoices are settled within 7 Days
Discount for 4 of any line item \$10 ea
Discount for 10 of any line item \$14 ea
Discount for 20 of any line item \$20 ea

Pins and Bushes
Minimum Product Order \$150
Prices subject to change without notice

Case Hardened Bushes - Precision Ground

Suit 125mm to 200mm Diameter Shaft

KSet Part No.	Price EX GST	Outside	Inside	Length	Manufacture Notes	Locations
B140-125-90	\$186	140.17mm	125.32mm	89.6mm	2.25kg	421-70-11272, 11872 WA470-Bush-F
B140-125X95	\$198	140.13mm	125.38mm	94.8mm	2.35kg	426-70-11871 WA600-Bush-C
B140-125X130	\$280	140.15mm	125.42mm	129.7mm	3.27kg	425-70-31840 WA500-6-Bush-D,E
B140-125X196	\$340	140.15mm	125.45mm	196.5mm	4.80kg	426-70-11710 WA600-3-Bush-J
B145F125X93	\$280	145.20mm	125.5 mm	92.6mm		Flange Bush WA600-1-Bush-J
B150-125N150	\$380	150.10mm	125.22mm	150.0mm		Eimco A2U220-194399

Suit 5 Inch Diameter Shaft

B139G127-127	\$310	5.510"	5.011"	4.98"		Joy External Groove
B139-127G152	\$200	5.505"	5.010"	6.00"	4.12kg	Caterpillar Internal Groove
B146G127G105	\$120	5.755"	5.013"	4.13"		1V9143 CAT980C,F,G-Bush-F
B146G127G132	\$150	5.755"	5.014"	5.19"	4.22kg	1V5635 CAT983,992C-Bush-J
B146-127-140	\$190	5.753"	5.009"	5.50"	4.31kg	7K8115 CAT983
B146G127-140	\$150	5.756"	5.014"	5.51"	4.38kg	4V8519 4 holes CAT966-Bush-F
B152-127-112	\$230	6.002"	5.011"	4.39"	4.38kg	Forestry Equipment Plain Bush

Suit 130mm Diameter Shaft

B145G130X130	\$390	145.10mm	130.25mm	129.8mm	3.20kg	EX3500 Greasable
B150G130X145	\$410	150.15mm	130.22mm	145.0mm	4.83kg	Volvo EC700-Bush-H
B150-130-74	\$210	150.17mm	130.27mm	74.0mm	2.60kg	Testk 2013 Plain Bush
B150-130-89	\$240	150.17mm	130.27mm	89.0mm	3.12kg	Testk 2013 Plain Bush
B160-130-75	\$190	160.18mm	130.28mm	75.0mm	4.00kg	Testk 2013 Plain Bush
B160-130-90	\$220	160.18mm	130.28mm	90.0mm	4.80kg	Testk 2013 Plain Bush
B160-130-120	\$290	160.18mm	130.28mm	120.0mm	6.40kg	Testk 2010 Plain Bush
B160G130X180	\$460	160.18mm	130.28mm	180.0mm	9.39kg	Testk 2010 Greasable Bush
B165F130X149	\$670	165.20mm	130.42mm	149.0mm	9.70kg	Flange Bush F204.8N8 PC800-6-Bush-J

Suit 140mm Diameter Shaft

B155-140G135	\$290	155.20mm	140.47mm	135.0mm	3.55kg	426-70-11890 WA600-Bush-A,B,D,E
B155G140G135	\$320	155.20mm	140.47mm	135.0mm	3.55kg	426-70-11820 WA600-Bush-L
B155G140X135	\$350	155.20mm	140.33mm	135.0mm		Testk 2009 Type J Greasable
B155G140G148	\$320	155.11mm	140.50mm	148.4mm	3.9kg	426-70-31770 WA600-6-Bush-B,C
B155G140X196	\$480	155.15mm	140.45mm	196.5mm		426-70-11720 WA600-3-Bush-K
B155G140X215	\$540	155.15mm	140.35mm	215.0mm	5.16kg	425-70-11861 WA500-Bush-F
B160F140X93	\$390	160.26mm	140.50mm	92.5mm		Flange Bush F175x38 WA600-1-Bush-K
B160G140X163	\$398	160.20mm	140.50mm	163.8mm		21N-70-12170 PC1250-Bush-K
B160F140X190	POA	160.34mm	140.50mm	190.0mm	F230x8	Flange Bush F230x8.2 PC1250-7-Bush-J
B175F140X193	POA	175.20mm	140.52mm	193.0mm	13kg	Flange Bush PC1250-8-Bush-J
B171-152-59	\$290	6.7545"	6.009"	2.32"	2.31kg	0501-10096 Plain Bush
B178G152G50	\$200	7.007"	6.004"	2.00"		Type I Greasable

Suit 160mm Diameter Shaft

B180-160-95	\$275	180.15mm	160.42mm	94.6mm	3.99kg	425-70-31820 WA500-6-Bush-F
B180-160G140	\$440	180.29mm	160.42mm	140.2mm	5.87kg	426-70-11860 WA600-Bush-F
B180G160X146	\$450	180.13mm	160.55mm	145.6mm	kg	21N-70-11181 PC1250-Bush-F
B180G160G159	\$480	180.13mm	160.55mm	159.4mm	kg	21N-70-31160 PC1250-Bush-A
B180F160-177	\$560	180.34mm	160.50mm	176.9mm	7.4kg	21N-70-31181 PC1250-Bush-F-Boom
B180-160G188	\$590	180.13mm	160.42mm	188.3mm	9.9kg	426-70-31791 WA600-6-Bush-A
B185G160X150	\$520	185.25mm	160.40mm	150.0mm	7.8kg	Type J Greasable
B203-178G187	\$350	8.002"	7.006"	7.36"		Type U Internal Groove
B220-200-118	\$280	220. mm	200. *mm	118.0mm		Type A Plain Bush



See Page 37 for Bronze Bushes

Pins and Bushes

Minimum Product Order \$150
Prices subject to change without notice

Bushes - Steel backed with Polymer Lining

Easy Glide Bushes - Steel Backed / Acetal Lined Bearings



EZI-Glide Bushes - Retro-fit for Glacier Bush, DU Bushings

KSet Part No.	Price Per Pair EX GST	Outside	Inside	Length		Manufacture Notes	Locations
BE44-40-30	\$ 14.00 / 2 off	44mm	40mm	30mm	.kg	Import	EZX04004430
BE44-40-40	\$ 16.00 / 2 off	44mm	40mm	40mm	.kg	Import	EZX04004440
BE50-45-30	\$ 16.00 / 2 off	50mm	45mm	30mm	.kg	Import	EZX04505030
BE50-45-40	\$ 22.00 / 2 off	50mm	45mm	40mm	.kg	Import	EZX04505040
BE50-45-50	\$ 24.00 / 2 off	50mm	45mm	50mm	.kg	Import	EZX04505050
BE50-45-60	\$ 24.00 / 2 off	50mm	45mm	60mm	.kg	Import	EZX04505060
BE55-50-30	\$ 16.00 / 2 off	55mm	50mm	30mm	0.08 kg	Import	EZX05005530
BE55-50-40	\$ 20.00 / 2 off	55mm	50mm	40mm	0.10 kg	Import	EZX05005540
BE55-50-50	\$ 12.00 / 2 off	55mm	50mm	50mm	0.13 kg	Import	EZX05005550
BE55-50-60	\$ 28.00 / 2 off	55mm	50mm	60mm	0.16 kg	Import	EZX05005560
BE65-60-40	\$ 26.00 / 2 off	65mm	60mm	50mm	.kg	Import	EZX06006540
BE65-60-50	\$ 30.00 / 2 off	65mm	60mm	50mm	.kg	Import	EZX06006550
BE65-60-60	\$ 34.00 / 2 off	65mm	60mm	50mm	.kg	Import	EZX06006560
BE70-65-50	\$ 34.00 / 2 off	70mm	65mm	50mm	.kg	Import	EZX06507050
BE75-70-50	\$ 32.00 / 2 off	75mm	70mm	50mm	.kg	Import	EZX07507050
BE75-70-60	\$ 36.00 / 2 off	75mm	70mm	60mm	.kg	Import	EZX07507060
BE75-70-70	\$ 42.00 / 2 off	75mm	70mm	70mm	.kg	Import	EZX07507070

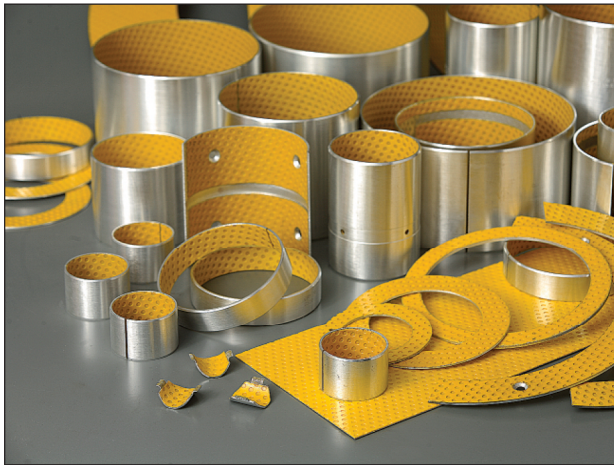
*Polymer Bushes
are sold in pairs.*

**Pins Bushes
Shims Seals
Tools Cutters**
**Minimum Product
Order \$150**
Prices subject to change
without notice

**ACETAL - An Engineering Thermoplastic, Formaldehyde Polymer Based
Low Friction Coefficient - Excellent Abrasion Resistance**

CSB-20 Steel Bronze Powder with POM Marginal Bearings

RoHS



Features

Suitable for rotating and oscillating movement, less maintenance requirements due to the long re-lubrication intervals, lower wear, lower susceptibility to edge loading, no absorption of water and therefore no swelling, good damping behaviours, good resistance to shock loads.

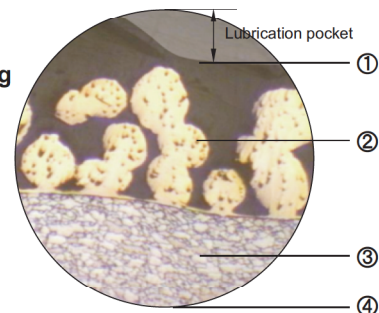
Structure

1. POM thickness 0.30~0.50 mm, it provides high wear resistance and low friction even with only minute volume of lubricant are supplied, this bearing surface carries a pattern of circular indents which should be filled with grease on assembly of the bearing.

2. Sintered bronze powder thickness 0.20-0.35mm, provides max. thermal conductivity away from the bearing surface, also serves as a reservoir for the resin mixture.

3. Low-carbon steel, provides exceptionally high load carrying capacity, excellent heat dissipation.

4. Copper/Tin plating thickness 0.002mm, provides good corrosion resistance.



Tech. Data

Max. load	Static	250N/mm ²	Temp. limit	-40°C~+110°C		
	Very low speed	140N/mm ²		Max. speed	Pre-lubricated	2m/s
	Rotating oscillating	70N/mm ²			Oiling Grease	Continuous
Max. PV		3N/mm ² *m/s	Thermal conductivity	50W(m*K) ⁻¹		
Coefficient of thermal expansion		11*10 ⁻⁶ *K ⁻¹	Friction coefficient	0.05~0.20		

Initial pre-lubrication at assembly is strongly recommended.

Typical Applications

Recommended for applications involving intermittent operation or boundary lubrication...

Automotive: suspension joints, kingpin assemblies and stub axles of trucks, automobile driving joint hinges, steering and other linkages, articulation joints, rear chassis hinges, fair leader rollers...

Machine tool building industry: spindles in drill, grinding, and milling machines, ram guide plates in multi-ram

presses...

Agricultural equipment: gearbox, clutch, bale trips and wheel caster swivels for bale accumulators, front axle pivot bearings, steering idler box bearings and kingpin bearings for harvesters...

It is especially well-suited for applications where lubricant can not be supplied continuously or repeatedly.

Dust Seals, Metal Cased Polyurethane - Pin Wipers

Part Number	Price Ex GST	Outside	Inside	Width	Manufacturer's Notes		
SL45-35-04 SL51-38-06	\$ 12 \$ 12	45 mm 2"	35 mm 1.5"	4 mm 0.25"	.02 kg .02 kg	Oil Seals For Caterpillar	Kubota Seals 7K9201
SL50-40-04	\$ 10	50 mm	40 mm	4 mm	.02 kg	Oil Seals	Kubota Seals
SL55-40-04	\$ 14	55 mm	40 mm	4 mm	.02 kg	Metric	KSet Seal
SL55-40-05	\$ 12	55 mm	40 mm	5 mm	.02 kg	Pin Wiper	KSet Seal
SL55-45-04	\$ 13	55 mm	45 mm	4 mm	.02 kg	Komatsu	07145-00045
SL60-50-04	\$ 18	60 mm	50 mm	4 mm	.02 kg	For Komatsu	07145-00050
SL65-50-04	\$ 13	65 mm	50 mm	4 mm	.02 kg	For Kobelco	2445R138D1
SL65-50-05	\$ 13	65 mm	50 mm	5 mm	.02 kg	For Kobelco	2445R220D5
SL65-50-06	\$ 16	65 mm	50 mm	6 mm	.03 kg	Sub for	130-09-12931
SL65-50-07	\$ 15	65 mm	50 mm	6 mm	.03 kg	Metric	KSet Seal
SL64-51-06	\$ 12	2.5"	2"	0.25"	.02 kg	KSet Seal	Imperial
SL68-55-04	\$ 12	68 mm	55 mm	4 mm	.02 kg	For Komatsu	416-09-11130
SL70-57-06	\$ 16	2.75"	2.25"	0.25"	.02 kg	7K9204	Imperial
SL70-60-04	\$ 13	70 mm	60 mm	4 mm	.02 kg	KSet Seal	Dust Seal
SL75-60-04	\$ 16	75 mm	60 mm	4 mm	.03 kg	2445R138D3	07145-00060
SL75-60-05	\$ 20	75 mm	60 mm	5 mm	.03 kg	For Kobelco	2445R220D1
SL75-60-08	\$ 18	75 mm	60 mm	8 mm	.04 kg	For Komatsu	203-70-33210
SL76-64-05	\$ 20	3"	2 1/2"	3/16"	.03 kg	Caterpillar	Grease Seal
SL76-64-08	\$ 14	3"	2 1/2"	5/16"	.05 kg	CAT950H Wheel Loader	7K9205
SL80-65-04	\$ 18	80 mm	65 mm	4 mm	.03 kg	For Komatsu	07145-00065
SL80-65-05	\$ 18	80 mm	65 mm	5 mm	.03 kg	For Kobelco	2445R220D2
SL80-65-08	\$ 20	80 mm	65 mm	8 mm	.05 kg	417-09-11120	707-77-65110
SL80-70-04	\$ 15	80 mm	70 mm	4 mm	.02 kg	Metric	KSet Seal
SL82-70-08	\$ 18	3 1/4"	2 3/4"	5/16"	.04 kg	Imperial	KSet Seal
SL82-70-10	\$ 18	3 1/4"	2 3/4"	3/8"	.04 kg	Imperial	KSet Seal
SL85-70-04	\$ 16	85 mm	70 mm	4 mm	.03 kg	2445R138D6	07145-00070
SL85-70-05	\$ 16	85 mm	70 mm	5 mm	.03 kg	CAT 2357679	2445R220D3
SL85-70-08	\$ 20	85 mm	70 mm	8 mm	.05 kg	Komatsu	21K-70-12180
SL90-70-05	\$ 22	90 mm	70 mm	5 mm	.08 kg	Metric	KSet Seal
SL86-71-05	\$ 28	86 mm	71 mm	5 mm	.08 kg	Metric	Suit Hitachi
SL90-75-08	\$ 24	90 mm	75 mm	8 mm	.08 kg	Komatsu	419-09-11110
SL89-76-05	\$ 16	3 1/2"	3"	3/16"	.08 kg	Imperial	KSet Seal
SL89-76-08	\$ 14	3 1/2"	3"	5/16"	.08 kg	CAT950H Wheel Loader	7K9209
SL95-76-08	\$ 20	3 3/4"	3"	5/16"	.08 kg	Caterpillar	Grease Seal
SL90-80-4.5	\$ 20	90 mm	80 mm	4.5 mm	.04 kg	Metric	KSet Seal
SL95-80-04	\$ 15	95 mm	80 mm	4 mm	.04 kg	2445R138D7	07145-00080
SL95-80-05	\$ 18	95 mm	80 mm	5 mm	.04 kg	Kobelco	2445R220D4
SL95-80-06	\$ 20	95 mm	80 mm	6 mm	.05 kg	Perth Seals	Overnight
SL95-80-08	\$ 18	95 mm	80 mm	8 mm	.06 kg	Komatsu	205-70-62140
SL95-80-10	\$ 24	95 mm	80 mm	10 mm	.07 kg	Komatsu	205-70-62150
SL95-80-11	\$ 24	95 mm	80 mm	11 mm	.07 kg	Use for	205-70-62150
SL100-80-10	\$ 32	100 mm	80 mm	10 mm	.08 kg	Metric	KSet Seal
SL110-80-10	\$ 32	110 mm	80 mm	10 mm	.10 kg	Metric	KSet Seal



WA Pin Wipers
WA Pins and Bushes
WA Bearings
Komatsu Dust Seals
Seals, Earthmoving



Perth Bushes
Excavator Seals
CAT910G-Seal-J
Plant Machinery Seals
093-1433 CAT
Kobelco Dust Seals
Hydraulic Cylinder

Seals for Caterpillar
CAT950H-Seal-J

Seals - Emerald
Kobelco Dust Seals
WA200-5-Seal-BCJKL

Dust Seals Mackay
Case Wheel Loaders
Gippsland Dust Seals

Urethane Seals
Hitachi - 4084578
Pin Wiper for Komatsu

Excavator Seals
Excavator Seals

Excavator Seals

Dust Seals Perth
CAT950H-Seal-C
Imperial Pin Wipers

Perth Dust Seals

Dust Seals, Komatsu
Hitachi - 4067902

Dust Seals Pilbara
Wiper Seals Komatsu
PC220 Wiper Seals
PC220 Wiper Seals

Dust Seals Australia



**Dust Seals, Pin Wipers, Urethane Seals, Metal Cased Seals
For Excavators; Continued next page....**

Dust Seals, Metal Cased Polyurethane - Pin Wipers

Part Number	Price Ex GST	Outside	Inside	Width		Manufacturer's Notes		
SL95-83-08	\$ 9	3 3/4"	3 1/4"	5/16"	.08 kg	CAT950H Wheel Loader 7K9210		
SL95-85-05	\$ 32	95 mm	85 mm	05 mm	.04 kg	Metric	KSet Seal	
SL100-85-08	\$ 23	100 mm	85 mm	8 mm	.06 kg	Komatsu	424-09-12320	WA420 Dust Seals
SL102-89-08	\$ 9	4"	3 1/2"	5/16"	.07 kg	Caterpillar D10	7K9211	Ripper Cylinder Seals
SL104-89-08	\$ 12	4 1/4"	3 1/2"	5/16"	.08 kg	CAT950H Wheel Loader 7K92120		CAT950H-Seal-A
SL114-89-08	\$ 20	4 1/2"	3 1/2"	5/16"	.08 kg	Caterpillar	Dust Seal	Excavator Seals
SL105-90-04	\$ 20	105 mm	90 mm	4 mm	.04 kg	2445R138D8	07145-00090	Kobelco Pin Wiper
SL105-90-05	\$ 18	105 mm	90 mm	5 mm	.04 kg	2438U1381524	KHV0103	Sumitomo Wiper Seals
SL105-90-06	\$ 24	105 mm	90 mm	6 mm	.04 kg	2445R220D6	LE00951,4067901	Hitachi Dust Seals
SL105-90-08	\$ 22	105 mm	90 mm	8 mm	.06 kg	205-70-62180	207-70-72120	Wiper Seals Komatsu
SL105-90-11	\$ 36	105 mm	90 mm	11 mm	.07 kg	Sub for	207-70-12270	PC300-7 Dust Seal
SL110-90-07	\$ 26	105 mm	90 mm	7 mm	.07 kg	Metric	KSet Seal	Pin Wipers Perth
SL110-90-08	\$ 22	105 mm	90 mm	8 mm	.07 kg	Metric	KSet Seal	Pin Wipers Darwin
SL110-95-05	\$ 32	110 mm	95 mm	5 mm	.06 kg	Sub for	KHV0104	Dust Seal Sumitomo
SL110-95-08	\$ 23	110 mm	95 mm	8 mm	.06 kg	Komatsu	421-09-11310	Seals Darwin Overnight
SL115-100-04	\$ 24	115 mm	100 mm	4 mm	.04 kg	Komatsu	07145-00100	Northern Territory
SL115-100-07	\$ 28	115 mm	100 mm	7 mm	.07 kg	Hitachi ZX450	4074008	Hitachi Excavator Seals
SL115-100-08	\$ 22	115 mm	100 mm	8 mm	.07 kg	Komatsu	208-70-12231	Urethane Seals Australia
SL115-100-09	\$ 20	115 mm	100 mm	9 mm	.09 kg	(Use for	205-70-62160)	Urethane Seals Perth
SL115-100-10	\$ 38	115 mm	100 mm	10 mm	.09 kg	Komatsu	205-70-62160	
SL120-100-08	\$ 46	120mm	100 mm	8 mm	.10 kg	Metric	KSet Seal	
SL127-102-08	\$ 14	5"	4"	5/16"	.09 kg	Caterpillar	3E6758	Caterpillar Wheel Loader
SL125-110-04	\$ 30	125 mm	110 mm	4 mm	.05 kg	Komatsu	07145-00110	Dust Seals Next Day
SL125-110-08	\$ 24	125 mm	110 mm	4 mm	.05 kg	4337 631	421-09-11320	Hitachi Komatsu
SL130-110-08	\$ 54	130 mm	110 mm	8mm	.08 kg	Pin Wiper	Concrete Crusher	Dust Seals
Darwin								
SL130-110-10	\$ 54	130 mm	110 mm	10mm	.10 kg	4083972	Hitachi 4251212	Hitachi ZX450
SL135-110-08	\$ 38	135 mm	110 mm	8 mm	.10 kg	Double Lip Seal	V0E14560213	Volvo EC700 Seals
SL133-114-08	\$ 16	5 1/4"	4 1/2"	5/16"	.08 kg	CAT950H Wheel Loader 7K9218		CAT950H-Seal-F
SL135-120-04	\$ 30	135 mm	120 mm	4 mm	.06 kg	Komatsu	07145-00120	PC400 Dust Seals
SL135-120-08	\$ 30	135 mm	120 mm	8 mm	.09 kg	Komatsu	421-09-11350	WA470 Dust Seals
SL140-120-08	\$ 30	140 mm	120 mm	8 mm	.09 kg	Double Lip Seal	V0E14560214	Volvo EC700 Seals
SL140-125-08	\$ 46	140 mm	125 mm	8 mm	.09 kg	Komatsu	421-09-11330	WA470 Dust Seals
SL146-127-08	\$ 16	5 3/4"	5"	5/16"	.08 kg	Caterpillar	5P0068	Dust Seals for Komatsu
SL155-130-08	\$ 36	155 mm	130 mm	8 mm	.09 kg	Double Lip Seal	V0E14560217	Volvo EC700 Seals
SL155-140-08	\$ 42	155 mm	140 mm	8 mm	.1 kg	Komatsu	425-09-11110	Wiper Seal for Komatsu
SL160-145-06	\$ 60	160 mm	145 mm	6 mm	Oil Seal	Komatsu	425-09-11210	WA480 Dust Seals
SL160-145-08	\$ 80	160 mm	145 mm	8 mm	.1 kg	Komatsu	425-09-11180	WA500 Dust Seals
SL180-160-08	\$ 94	180 mm	160 mm	8 mm	.1 kg	Komatsu	WA500-6-F 426-09-1110	WA500 Dust Seals

Dust Seals, Pin Wipers, Urethane Seals
Metal Cased Seals, Buy-by-Size Seals



Bronze Bushes - LG2 Bearings

KSet Part No.	Price	Outside	Inside	Length	Manufacture Notes	Locations
	EX GST					
BB36-26-34	\$ 30	34.45mm	25.5mm	34.0mm	3 Only	Plain Bush
BB54F44-40	\$ 35	54.50mm	44.50mm	40.0mm	2 Only	Flange Bush
BB52-46-40	\$ 12 !	2.064"	1.813"	1.69"	\$ Reduced \$	12 only
BB52-46-44	\$ 25	2.064"	1.813"	1.75"	Chamberlain	CHAM 39591
BB64F51N49	\$ 120	2.5025"	2.0035"	1.93"	F72.6x3.6 Flange Bush	0310-10017
BB82G70-67	\$ 65	3.255"	2.759"	2.65"	11W ExtGr	CAT633 - Steering Bush 8J9926
BB83G64X89	\$ 94	3.251"	2.505"	3.50"		Eimco A2U130-194369 222 410
BB95G76X127	\$ 148	3.754"	3.004"	5.00"		Eimco 222 413
BB95G83G80	\$ 85	95.13mm	3.275"	80.3mm	2:10:31	JCB3CX 808-00216
BB100F85X35	\$ 178	100.07mm	85.10mm	34.96mm	Sandvik	2643 3298 Flange Bearing
BB100F85X74	\$ 230	100.08mm	85.10mm	74.00mm	Sandvik	2643 3318 Flange Bearing
BB102G90G101	\$ 280	102.49mm	90.42mm	101.1mm		JOY 100163420
BB108G89X76	\$ 106	4.251"	3.506"	3.00"	1.9 kg	Eimco 222 412
BB114G89X64	\$ 130	4.501"	3.505"	2.50"	2.2 kg	Eimco 222 411
BB114G89X148	\$ 218	4.500"	3.505"	5.81"		Eimco 247 065
BB115G102G101	\$ 290	4.542"	4.044"	3.98"		Aluminium Bronze 100163419
BB121G102X64	\$ 110	4.752"	4.005"	2.50"		Eimco 6422 6271 = 226 271
BB117G105G59	\$ 80	4.612"	105.15mm	58.7mm		JCB3CX 808-00214

Dimensions shown are for the KSet Bush, not for nearby OEM numbers



Miscellaneous

N171-74T38	\$ 214	6.747"	3" UNF	1.50"NUT for P89G222PT	A2U130-196120, A2U130-196152
N178-88T38	\$ 274	7.006"	M90 x 2	1.50"NUT for A2U220-193387	A2U220-196134
R229-114-19	\$ 235	8.998"	4.995"	0.75"	RETAINER 242 346
B41-19-84	\$ 20	1.625"	0.753"	3.32"	R56188, R124230
B38-27-87	\$ 20	1.496"	1.076"	3.41"	D90422 27 ONLY
B38-27-99	\$ 24	1.496"	1.061"	3.90"	D45904 EX STOCK
B38-27-111	\$ 30	1.496"	1.065"	4.37"	D31219 EX STOCK
B35S32T25	\$ 26	1.373"	1.28"Maj	1.00"	.48 kg JOHN DEERE U41089
B55S18T44S	\$ 74	54.95mm	M20x1.5	44.0mm	4140 No HT Split Collet 114 809 54
B55S18T49S	\$ 74	54.95mm	M20x1.5	49.0mm	4140 No HT Split Collet 114 809 65
B55S21T38S	\$ 74	54.95mm	M24x3	38.0mm	4140 No HT Split Collet 114 809 43
B55S21T43S	\$ 74	54.95mm	M24x3	43.0mm	4140 No HT Split Collet 114 809 76
B63-38-41	\$ 42	2.503"	1.503"	1.61"	= Eimco A2U913-194001
B63-38H41	\$ 60	2.503"	1.503"	1.61"	= Eimco A2U913-194016
B82S76T35	\$ 80	3.240"	2.98"Maj	1.34"	U46702
B86F76-80HT	\$ 260	3.375"	3.001"	3.150"	= Eimco EA8002
B106T76-11	\$ 130	106.25mm	3.001"	11.2mm	= Eimco 913-500 003
B114-102-60	\$ 90	4.504"	4.006"	2.37"	= Eimco A2U913-194355
B133G121H57	\$ 150	5.255"	4.750"	2.23" 2xD10 C27	Top Artic. A2U913-194034 16HRC

Pins and Bushes

Minimum Product Order \$150

Prices subject to change without notice

