



**City of San Bernardino
Historical and Pioneer Society**
P.O. Box 875, San Bernardino, CA 92402

LIBRARY NEWS JULY 2008

By Richard D. Thompson, Librarian

July 12th Tour: Grand Opening of Santa Fe Depot History and Railroad Museum

2008 July 12 2008

GREAT EVENT

GRAND OPENING

OF THE

JOIN US

ON

JULY 12, 2008

9:00 A.M. to 1:00 P.M.

ALSO

CELEBRATING

TRAINS

THE DEPOT'S 90TH

THE PATRON BRICKS

COME FIND YOURS

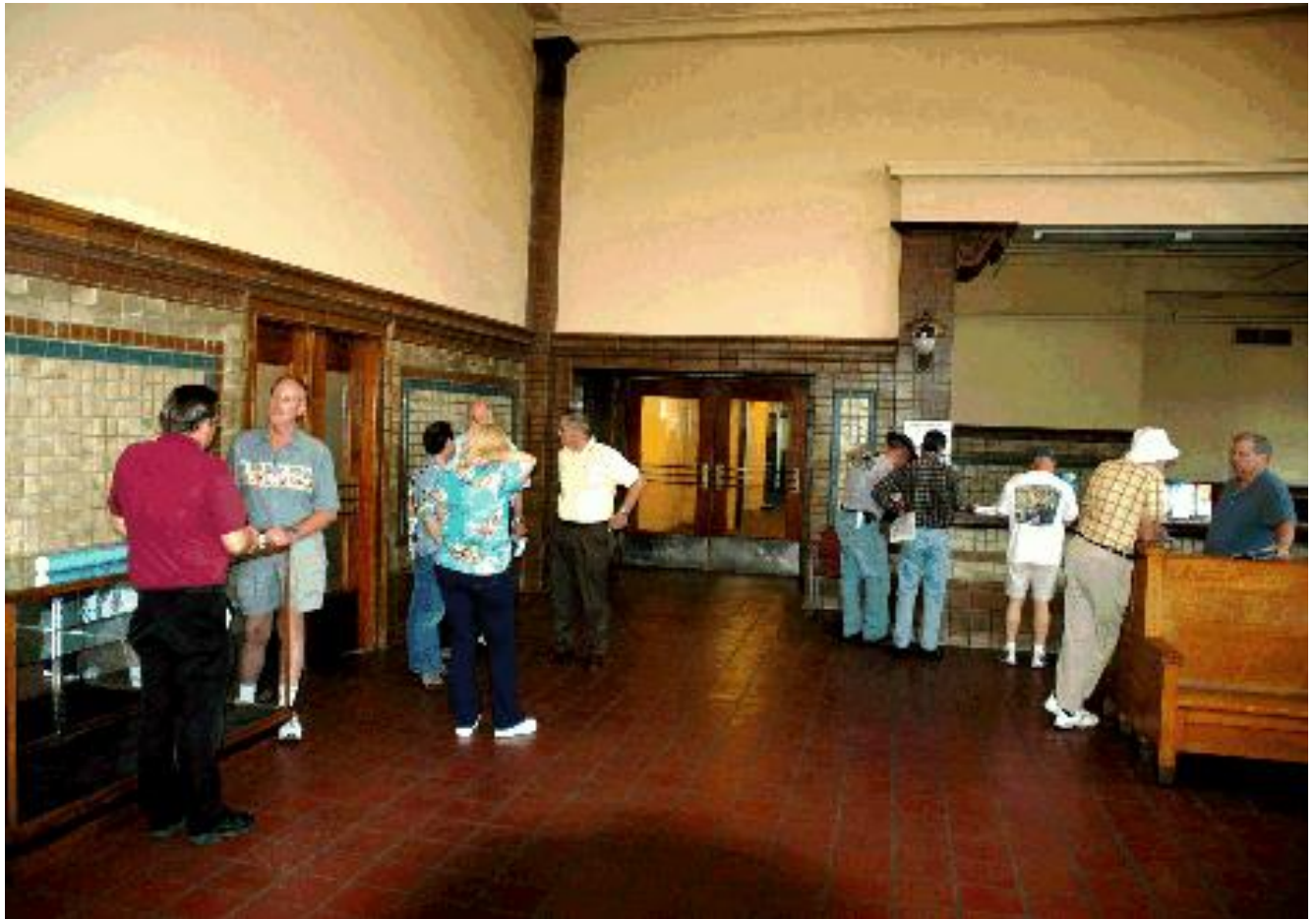
At the San Bernardino Santa Fe Depot
1170 West 3rd Street • San Bernardino, CA

For the July field trip we will not be meeting at any specific time or place. You will be on your own to visit the opening of the History and Railroad Museum at the former Santa Fe Depot, which is located on Third Street easterly of Mt. Vernon Avenue. All of the necessary information — time, address, hours, etc. — are on the announcement shown on the previous page. Steve Shaw and Allen Bone have been slaving away on the museum project for the past few months, and they welcome all who wish to attend.

May Tour: The Tail of the Kite

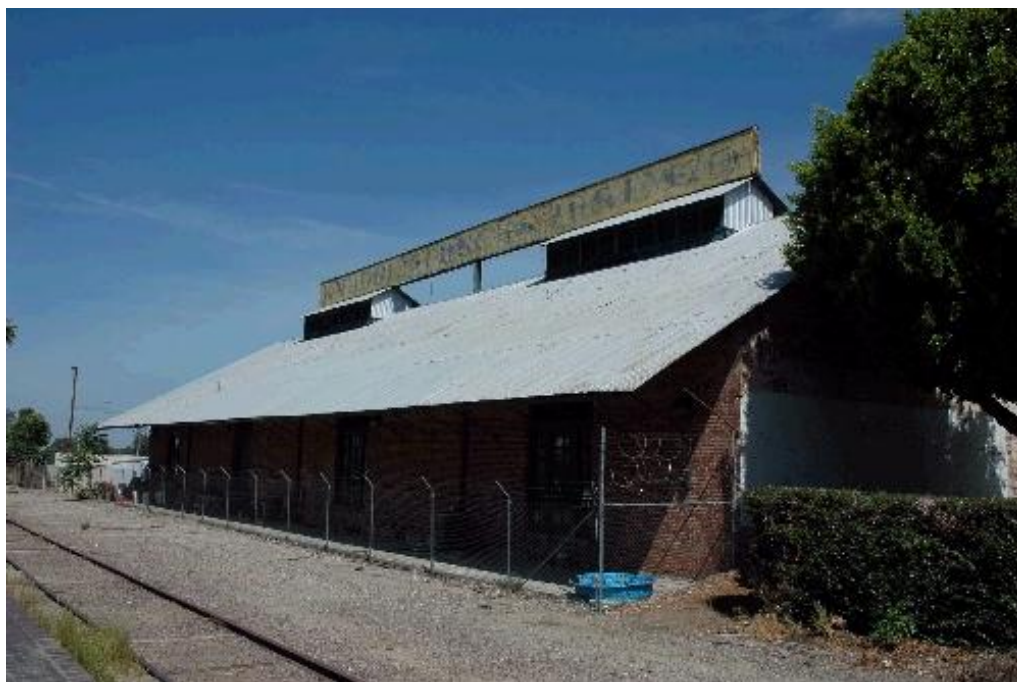
In May we took a tour of A.T. & S.F. Railway (Santa Fe) facilities that still remain on the Redland's Loop, earlier known as the "Kite Shaped Track." The entire tour was planned and executed by Mark Landis, and what an excellent job he did. He appointed sub-tour directors, each with a special knowledge of a particular depot, which included Allen Bone for San Bernardino, Tom Atchley for Redlands, and Bill Calvert for Highland, plus we had Glen Icanberry among our group, who is an expert on the overall route. There were about three dozen people in attendance. The photographs of the tour are by Dick Molony.

We began our tour at the Santa Fe Depot. The glass doors in the rear of this photograph lead to the History and Railroad Museum that will be opening on July 12th.



Kite tour starts at Santa Fe Depot lobby

Our next stop was the Redlands Depot. There were several buildings in the immediate vicinity that dated to the late 19th and early 20th Century, such as this packing house across the tracks from the depot.



1888 Edwards-Chamblin Packing House in Redlands

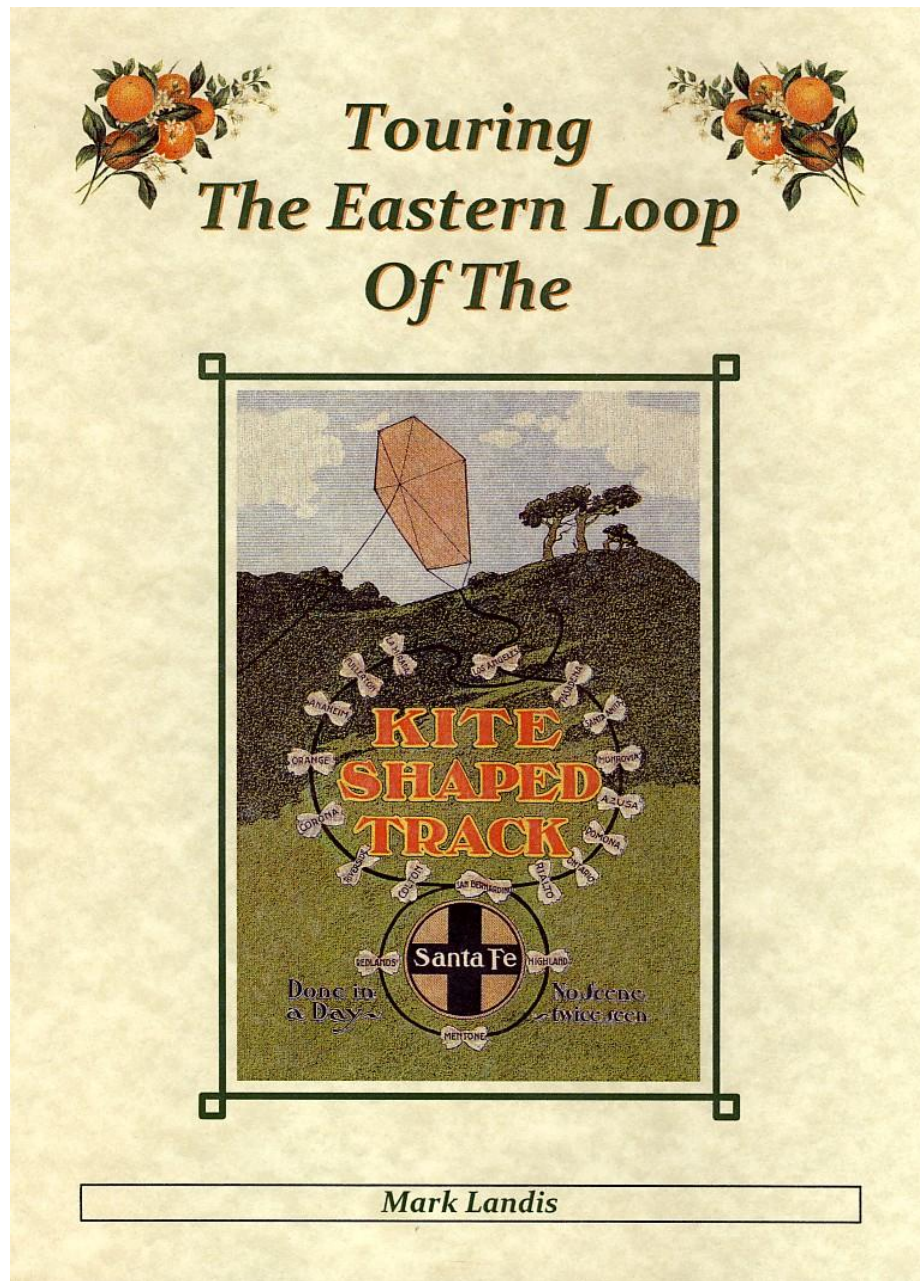
Next we traveled to Highland. There is a concrete foundation of the old depot, but the building has been gone for decades. There were several warehouse/packing houses still standing however.



Packing house on Pacific Avenue in Highland

We then toured the Patton Depot, where Mark Landis gave a brief history of the structure and several others in the group added to the story.

Mark put a lot of work into this tour, and it showed. He provided the Society with a large multi-colored map showing the entire Loop; all of the stations, whistle-stops and loading platforms. The map shows the exact date when each segment of the loop was discontinued. They began dismantling the line in northern San Bernardino, and I was startled to learn that it no longer extends even to Redlands. Pretty sad. Mark also prepared a book especially for the occasion, with 36 pages of maps, photographs and text explaining the origin of the line, its history and demise. This is a nice memento of the tour, and he sold a number of them for a very modest \$10 each, the proceeds from which he donated to the Society.



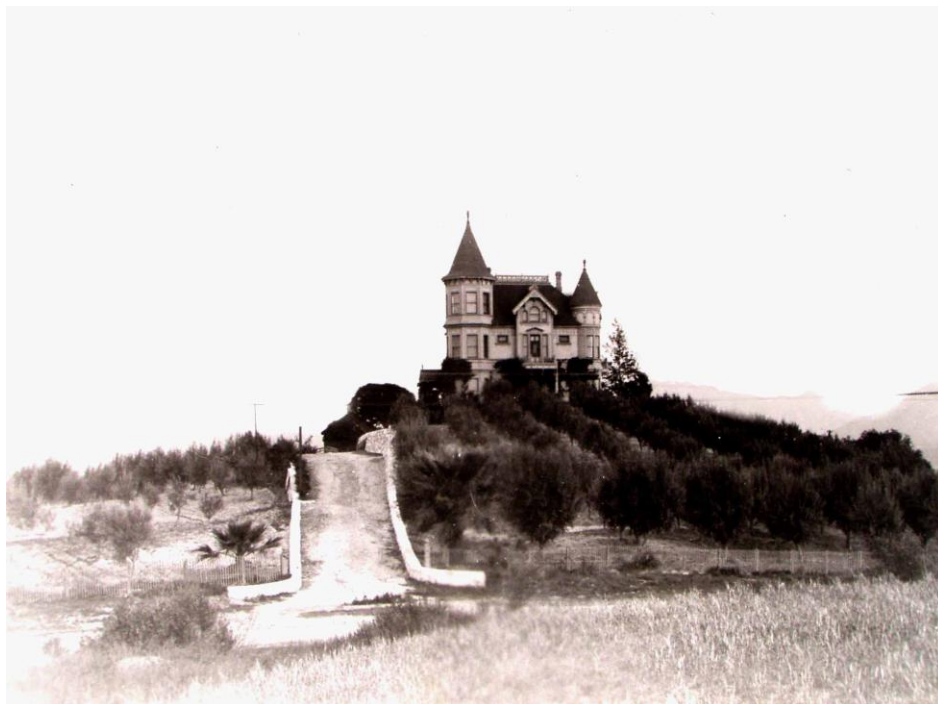
Mark Landis' tour book

June Tour: Bunker Hill to South Mt. Vernon Avenue

Allen Bone's tour of South San Bernardino was a great success. We started at Bunker Hill, the birthplace of San Bernardino, according to some, and finished at the Collins Dairy. As always, Dick Molony took some great photographs, and except for the historic view of the Water's home, the following pictures are his.



Rock wall at Bunker Hill. Behind the trees (upper left) are the spires of the Greek Orthodox Church.



Byron Water's House circa 1890. The rock wall is still in existence.



Steel truss railroad bridge across Lytle Creek



Cow barn at Collins Dairy

Saving the past for the future since 1888