



FOR SALE

GSA1800LPH Borehole Logging & Casing Perforating Unit



Groundsearch Australia

178 Racecourse Road, Rutherford NSW 2320 Australia

PO Box 496, East Maitland NSW 2323 Australia

admin@groundsearch.com.au

T +61 2 4932 3582 • F +61 2 4932 2529 • M +61 427 494234

General description

Stand-alone system, 1800m depth capability unit for:

- Geophysical logging
- Casing perforating with 20' x 31/8" diameter and 10' x 4" diameter maximum gun sizes
- Dimensions: L14.5' x 7.4' x 7.4'
- Tare weight: 7720lbs

Cable borehole access options with:

- Sheave system direct to rig mast from inside
- Slewing, hydraulically adjustable boom when removed from container

Individual diesel power packs for:

- Hydraulic drawworks and boom
- 240VAC lighting, logging and maintenance components (external source cable connection option included)

Electrical system designed to meet strict Australia mining standards

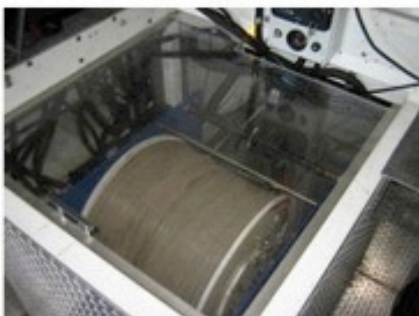
Turnkey option when supplied with Century Geophysical Corporation logging tools, sources, calibration and ancillary devices and spare parts

Field tested and available for immediate delivery anywhere in the world (FOB Rutherford NSW Australia) in 20' steel shipping container:

- Shipping dimensions: L20' x W8.0' x H8.6'
- Shipping weight: 13400lbs

Optional onsite commissioning and comprehensive operational and maintenance training

Price on application to admin@groundsearch.com.au



Groundsearch Australia

178 Racecourse Road, Rutherford NSW 2320 Australia

PO Box 496, East Maitland NSW 2323 Australia

admin@groundsearch.com.au

T +61 2 4932 3582 • F +61 2 4932 2529 • M +61 427 494234

Body build components:

- Full steel tray and storage box construction
- In built rear tray access steps
- Tread plate metal alloy on floor surface for all weather access
- 3/8" thick, steel reinforced floor under the drawworks
- Cabin fully insulated and lined
- External windows for added ventilation
- Internal and external 240VAC lighting

Hydraulic drawworks power pack components:

- HATZ M-series 2M41 air-cooled diesel engine
- FLEXILOCK coupling power pack/ hydraulic pump adaptor plate
- SAUER DANFOSS variable piston pump
- SAUER DANFOSS hydraulic motor
- 12VDC continuous run electric cooling system
- 31.7Gal steel oil reservoir with filters
- SAUER DANFOSS manifold/sequence valve with electrically operated relief valve
- Electric engine start up/idle and indicator gauge kit (12VDC)
- Toggle switch and joy stick control operation from internal control station
- Rear remote hydraulic control access
- Protective guarding preventing access to rotating drive shafts and draw works
- Emergency stop protection located inside and at the rear of the unit
- 10.5Gal stainless steel diesel fuel tanks
- 120Ah marine grade diesel power pack start up battery
- 12VDC battery isolator with lock out facility
- Externally vented diesel power pack exhaust

Drawworks components:

- Model: Century S2000H drawworks
- Rochester 1/4" diameter, 4 core, armoured wire line
- Terminated to a four pin Century cablehead
- Level winding system with fairleads to spool cable left and right
- Wireline feed through a 12" V-groove measuring wheel with pressure wheels for increased accuracy

- BEI optical depth encoder
- Mercotac model 430, 4 conductor slip ring (zero noise)
- Complete alloy plate guards with removable panels for maintenance access

Borehole logging components:

- PC based operating system
- Century System VI downhole power supply from surface to tool providing real time data analysis capabilities
- Century shooting panel for perforation work
- GSA cable isolator for safe grounding of cable conductors
- High definition 21" digital display
- Printrex thermal printer for fast, continuous, fanfold, strip log printing in the field
- 240VAC power line conditioner
- 240VAC to 120VAC power converter
- Electrical system designed to meet strict Australia mining standards
- All connections are IP66 rated for use in moist and dusty conditions
- Electrical leads - mechanically fixed and armoured against wear and damage
- Electrical system protection - master circuit breakers and RCDs with lockout facilities

Other components:

- Full mine site safety decal package
- Rubber floor mats
- Seat covers
- Dual fire extinguishers
- Small work vice for cable heading
- Full steel work bench with shelf
- PVC logging tool pipes for tool storage and transport
- Fuel and water storage
- Kipor KDE 6700 TA Diesel generator (6.7KVA)
- Generator transport cradle
- 90feet triple armour extension lead
- 20' steel shipping container (ISO Type: 22GI) with front and rear double access doors

Price on application to admin@groundsearch.com.au



Groundsearch Australia

178 Racecourse Road, Rutherford NSW 2320 Australia

PO Box 496, East Maitland NSW 2323 Australia

admin@groundsearch.com.au

T +61 2 4932 3582 • F +61 2 4932 2529 • M +61 427 494234