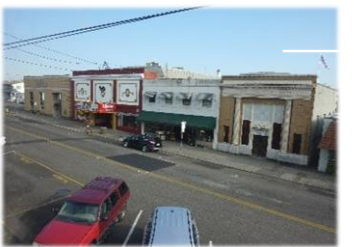


# Historic St. Helens Masonic Lodge

*\$.50/square foot*

- *Two story property:*
- For Lease
- Property class 201: Commercial improved zoned property
- 10,000 square feet of property
- 5,000 square feet on each of the two floors
- Two floors connected by flight of stairs with handicap accessibility
- Constructed in 1913 for St. Helens Masons
- Operated by Masons until 2006 when current ownership took hold
- Located in historic Old Town St. Helens
- Located on First Avenue in the downtown district
- Ample parking on site--street parking in front and a private lot in rear
- Loading dock in rear of property
- Currently being renovated for HVAC system
- Beautiful city and Columbia River views
- Near anchor locations: Columbia Theater, City Hall, and the Columbia County Courthouse
- Ideal location for future renovation as a restaurant and pub



237 First Street, St. Helens, OR 97201

Call for a showing or with any questions: 503-410-1061 [www.columbiacountyoregon.com](http://www.columbiacountyoregon.com)