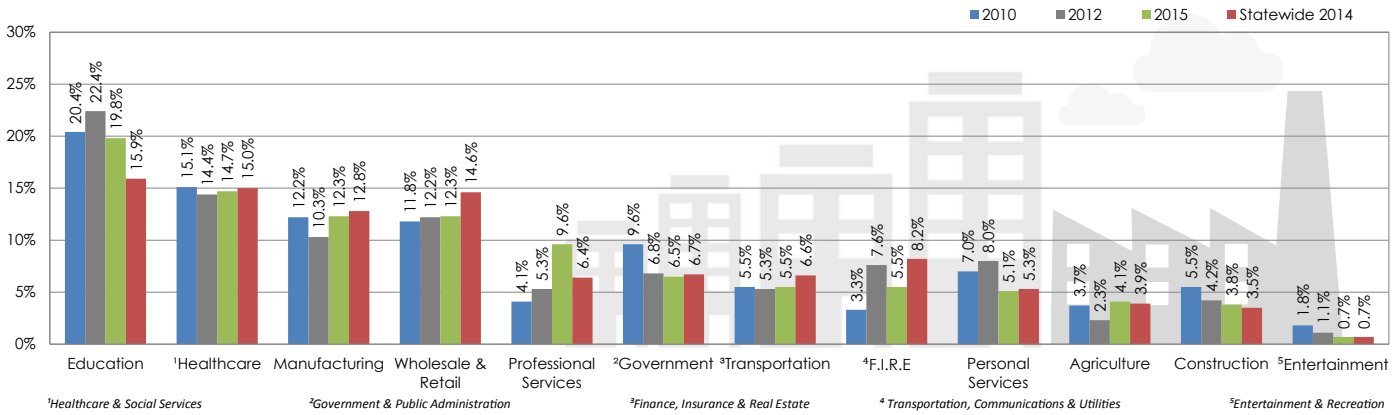


# LABORSHED TRENDS: 2010-2015

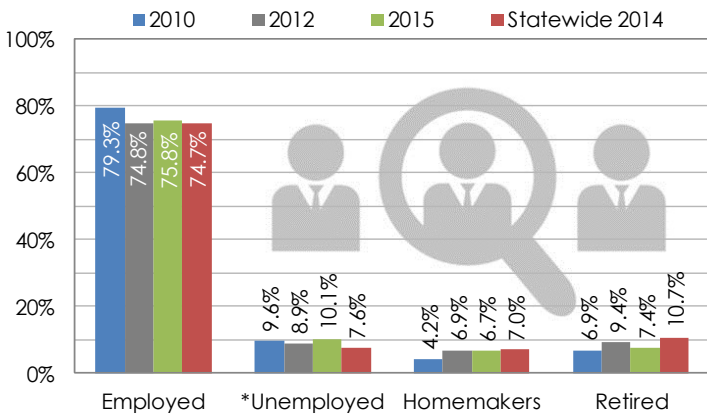
## WASHINGTON COUNTY, IOWA LABORSHED



### Industries of the Employed (ordered by most recent year, high-to-low):

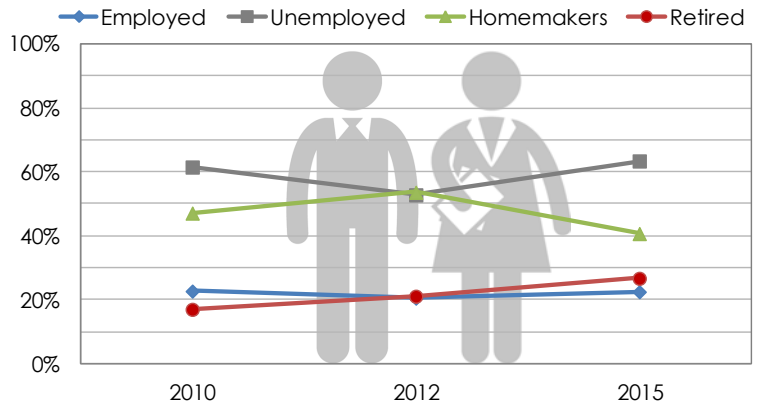


### \*Employment Status:

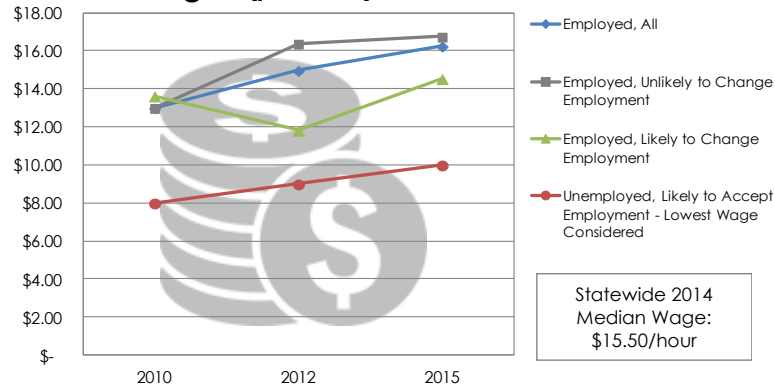


\*Employment status is self-identified by the survey respondent. The unemployment percentage does not reflect the unemployment rate published by the U.S. Bureau of Labor Statistics, which applies a stricter definition.

### Likelihood to Change/Accept Employment (by employment status):

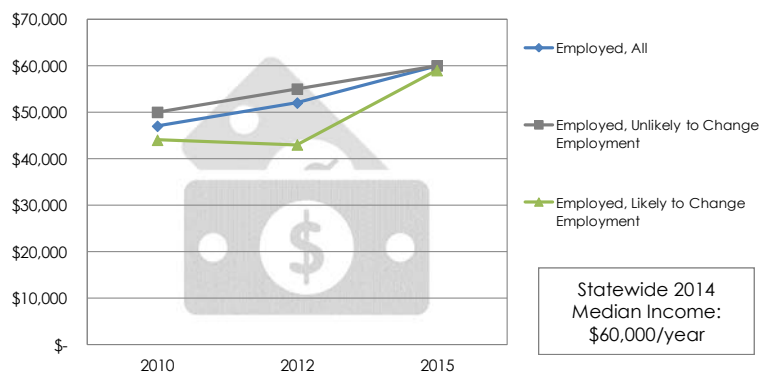


### Median Wages (per hour):



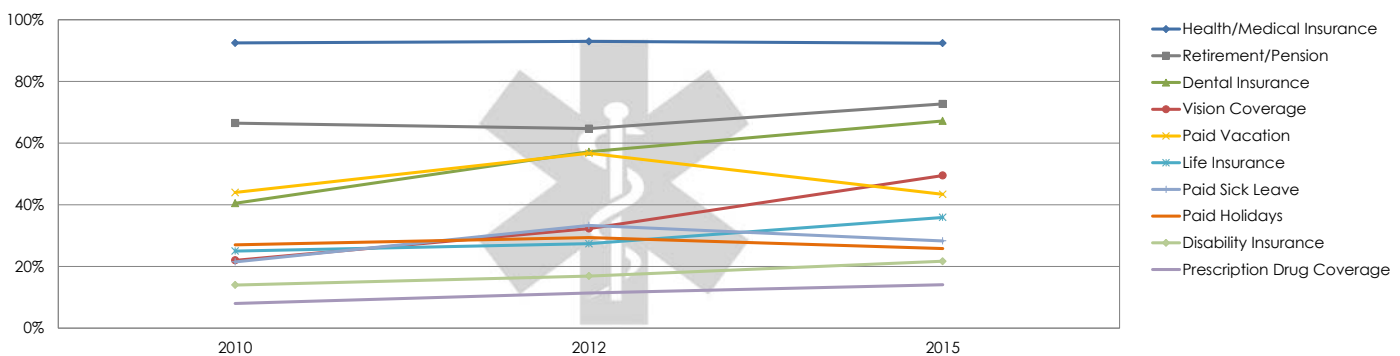
Statewide 2014 Median Wage: \$15.50/hour

### Median Salaries (per year):



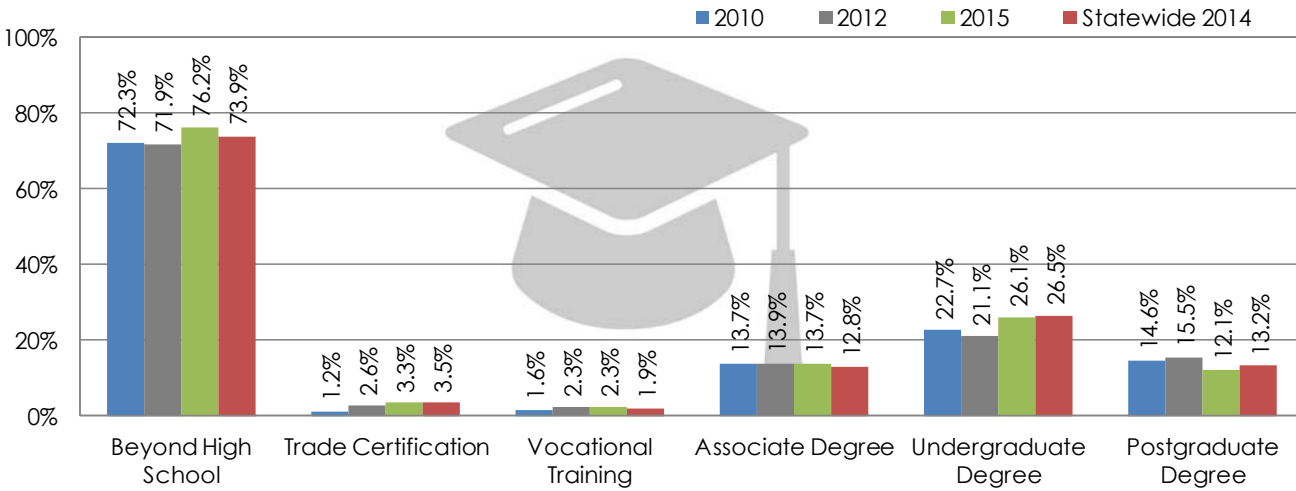
Statewide 2014 Median Income: \$60,000/year

### Top Current Benefits of the Full-Time Employed (ordered by most recent year, high-to-low):



# LABORSHED TRENDS: 2010-2015

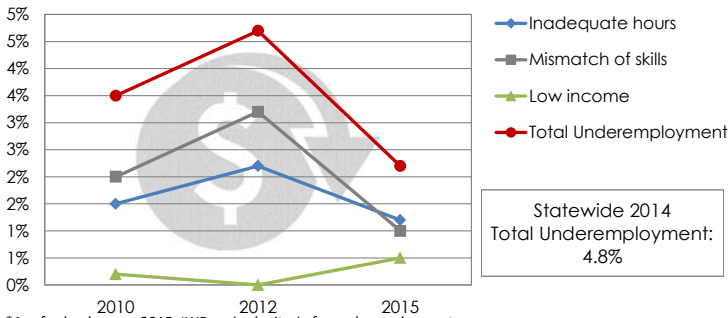
## Education Level of the Employed:



## Additional Education/Training Required (as perceived by respondents):

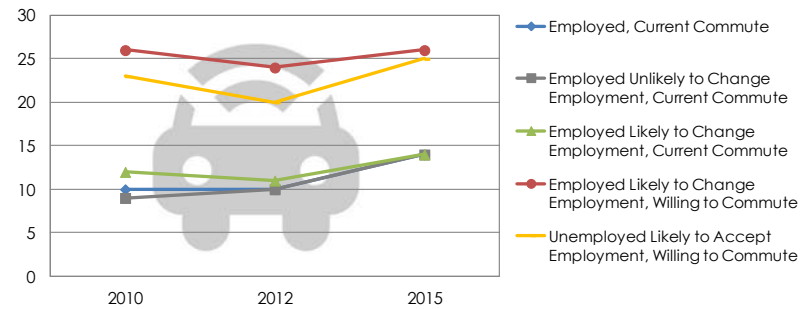
Employed Likely to Change Employment		Unemployed Likely to Accept Employment	
2010	42.5%	2010	25.0%
2012	46.8%	2012	36.8%
2015	36.2%	2015	42.3%

## \*Underemployment:



\*As of calendar year 2015, IWD revised criteria for underemployment. Previously reported underemployment data may not match percentages reported here.

## Average Commute (in miles):



## Job Search Resources (ordered by most recent year, high-to-low):

