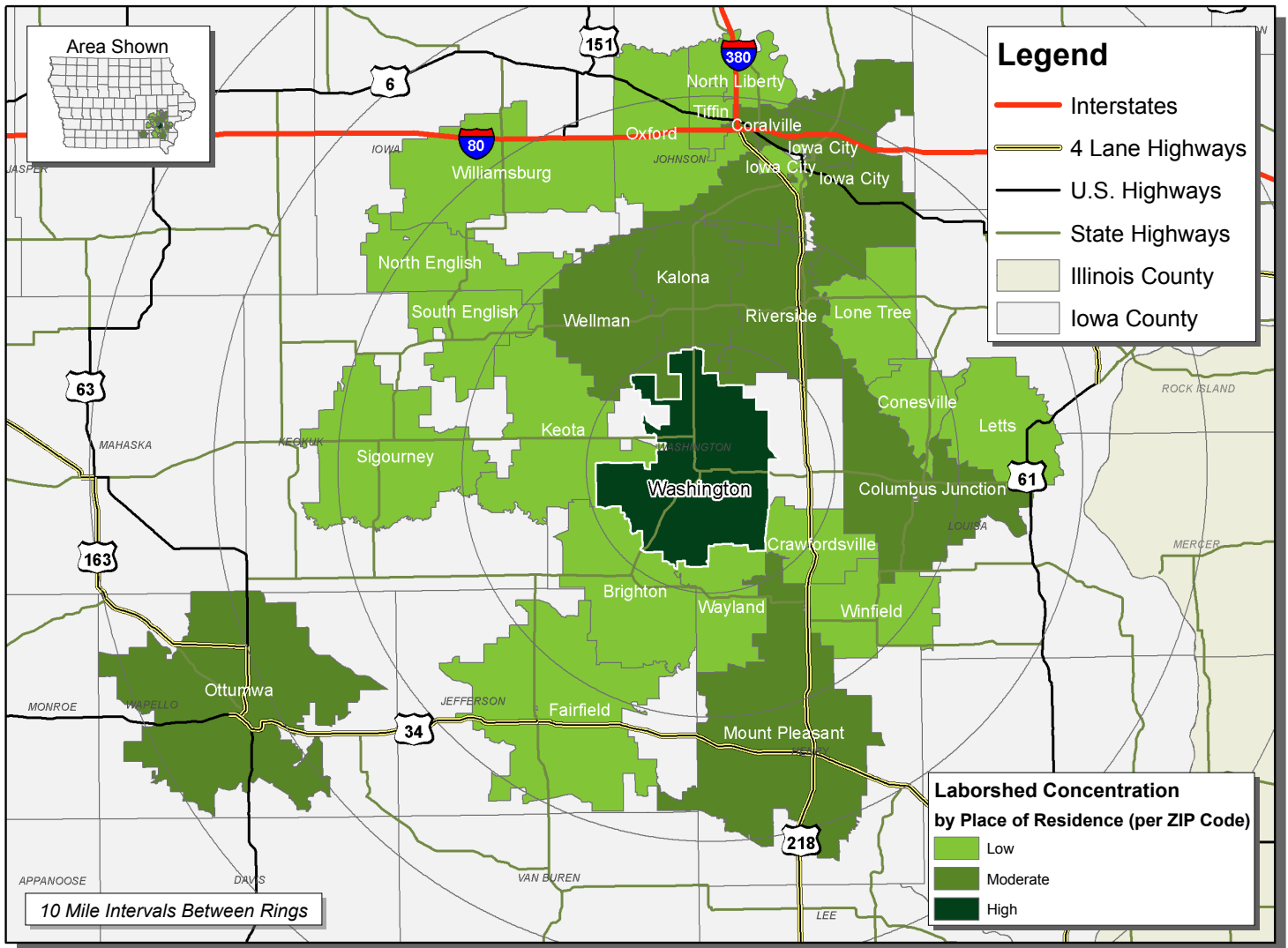


LABOR CHARACTERISTICS FOOD PROCESSING



WASHINGTON COUNTY, IOWA LABORSHED AREA

CONCENTRATION OF RESPONDENTS WITHIN THE LABORSHED AREA
WITH TRANSFERABLE EXPERIENCE/SKILLS BY PLACE OF RESIDENCE



Workers who have transferable experience/skills in the industry are currently commuting an average of 15 miles one way for work. Those who are likely to change/accept employment are willing to commute an average of 23 miles one way for the right employment opportunity.

FOR MORE INFORMATION REGARDING THE WASHINGTON COUNTY LABORSHED, CONTACT:

Washington Economic Development Group
205 West Main Street
Washington, IA 52353-1722
Phone: (319) 653-3942
Email: wedg@washingtioniowa.org
www.washingtioniowa.org

LABOR CHARACTERISTICS



FOOD PROCESSING

ESTIMATED AVAILABLE LABOR PER OCCUPATIONAL CATEGORY:

BUSINESS OPERATIONS:

- Managers - 2,415
- Supervisors - 390
- Accountants & Auditors - 1,231
- Bookkeeping Clerks - 2,420
- Office Clerks & Administrative Support Workers, All Other - 4,433
- Production, Planning & Expediting Clerks - 394
- Secretaries - 4,828
- Stock Clerks - 1,229

PRODUCTION:

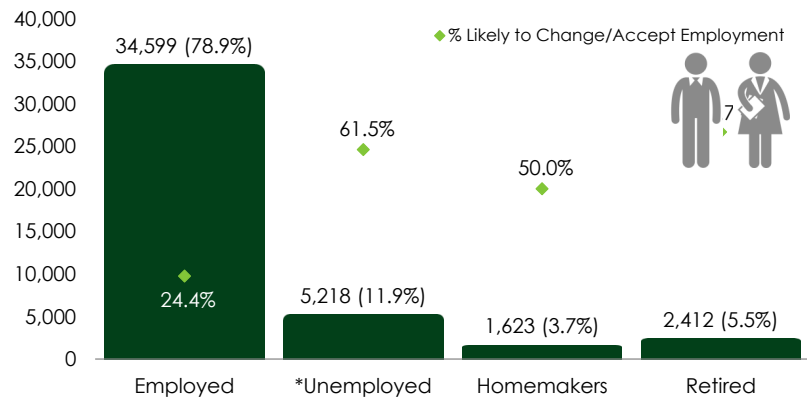
- Managers - 792
- Supervisors - 1,627
- Agricultural & Food Science Techs - 400
- Agricultural Workers, All Other - 399
- Butchers & Meat Cutters - 797
- Chemical Techs - 396
- Cleaning, Washing & Metal Pickling Equipment Operators - 401
- Cutting & Slicing Machine Operators - 397
- Industrial Machinery Mechanics - 792
- Inspectors - 404
- Installation, Maintenance & Repair Workers, All Other - 391
- Licensed Practical & Vocational Nurses - 402
- Life, Physical & Social Science Techs - 1,230
- Medical & Clinical Laboratory Technologists - 395
- Millwrights - 393
- Production Workers, All Other - 4,036
- Registered Nurses - 5,616
- Water & Liquid Waste Treatment Plant & System Operators - 789

MATERIAL MOVERS:

- Managers - 398
- Supervisors - 386
- Forklift Operators - 410
- Heavy Truck Drivers - 3,642
- Laborers & Material Movers, Hand - 2,019

AN ESTIMATED TOTAL OF **43,852** PEOPLE IN THE LABORSHED AREA

ESTIMATED TOTAL BY EMPLOYMENT STATUS (PERCENTAGE):



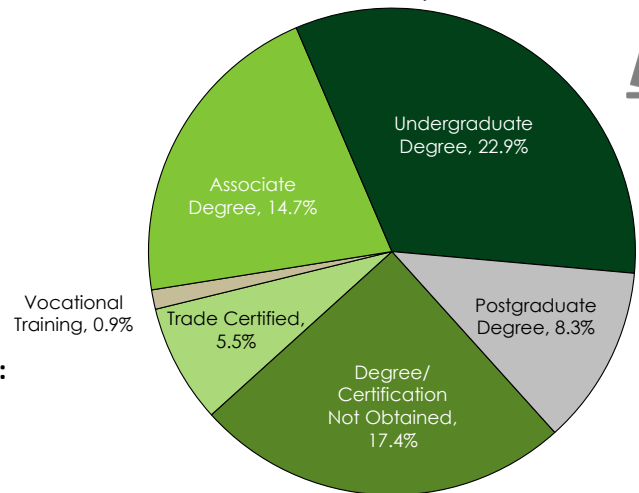
*Employment status is self-identified by the survey respondent. The unemployment percentage does not reflect the unemployment rate published by the U.S. Bureau of Labor Statistics, which applies a stricter definition.

EMPLOYMENT STATS:

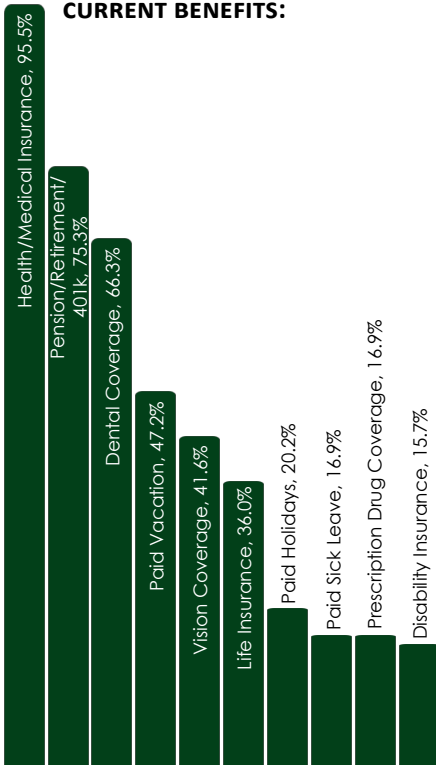
- 70.1% paid an hourly wage
- 70.6% are/were employed full-time
- 20.2% are/were employed part-time
- 5.5% are/were self-employed
- 8.1% hold two or more jobs
- Currently working an average of 41 hours/week

EDUCATIONAL LEVEL:

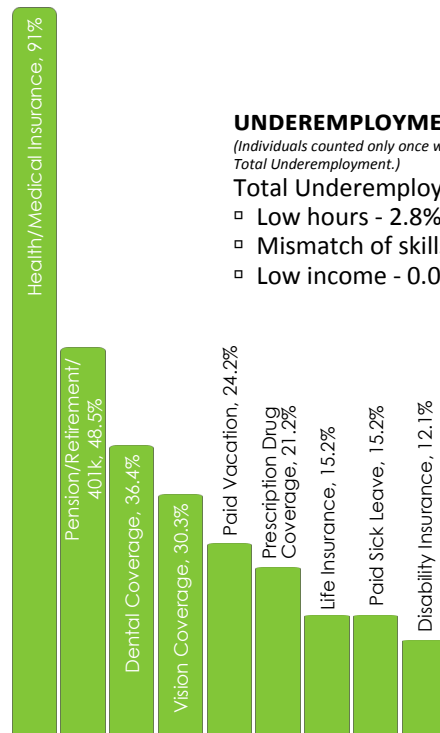
(69.7% HAVE AN EDUCATION BEYOND HIGH SCHOOL)



CURRENT BENEFITS:



DESIRED BENEFITS:



UNDEREMPLOYMENT (ESTIMATED):

(Individuals counted only once when estimating Total Underemployment.)

Total Underemployment - 4.6% (176)

- Low hours - 2.8% (107)
- Mismatch of skills - 2.8% (107)
- Low income - 0.0%

TOP JOB SEARCH RESOURCES:

(For those seeking employment opportunities, by use.)

- Internet - 71.1%
 - www.linkedin.com
 - www.indeed.com
 - www.careerbuilder.com
- Newspapers - 24.7%
 - The Gazette - Cedar Rapids
 - Washington Evening Journal
 - The Hawk Eye - Burlington
- IowaWORKS Centers - 17.5%
- Networking through friends, family or acquaintances - 10.3%

WORKPLACE FLEXIBILITY:

(by percent of interest)

- Job teams - 77.8%
- Cross-training - 75.0%
- Job sharing - 44.4%
- Varied shifts - 36.1%
- Seasonal work - 55.6%
- Temporary work - 44.4%



LABOR CHARACTERISTICS - WAGES

FOOD PROCESSING



OCCUPATION	OCCUPATIONAL CODE	MEAN WAGE	ENTRY WAGE	EXPERIENCED WAGE	MEDIAN WAGE	MEAN ANNUAL SALARY
Accountants and Auditors	13-2011	\$ 31.55	\$ 19.66	\$ 37.50	\$ 27.90	\$ 65,633
Agricultural Inspectors	45-2011	\$ 16.51	\$ 10.47	\$ 19.53	\$ 15.35	\$ 34,337
Bakers	51-3011	\$ 11.95	\$ 8.59	\$ 13.63	\$ 11.50	\$ 24,853
Biomedical Engineers	17-2031	\$ 22.11	\$ 10.49	\$ 27.92	\$ 21.66	\$ 45,981
Bookkeeping, Accounting, and Auditing Clerks	43-3031	\$ 15.33	\$ 10.21	\$ 17.88	\$ 14.94	\$ 31,878
Butchers and Meat Cutters	51-3021	\$ 12.19	\$ 9.59	\$ 13.49	\$ 11.72	\$ 25,357
Buyers and Purchasing Agents, Farm Products	13-1021	\$ 27.06	\$ 22.61	\$ 29.28	\$ 27.50	\$ 56,276
Chemical Engineers	17-2041	\$ 50.54	\$ 35.43	\$ 58.10	\$ 46.80	\$ 105,129
Chemical Technicians	19-4031	\$ 20.99	\$ 15.82	\$ 23.58	\$ 20.78	\$ 43,669
Chemists	19-2031	\$ 33.67	\$ 22.37	\$ 39.33	\$ 31.16	\$ 70,042
Cutting and Slicing Machine Setters, Operators, and Tenders	51-9032	\$ 15.63	\$ 12.67	\$ 17.11	\$ 16.07	\$ 32,514
Executive Secretaries and Executive Administrative Assistants	43-6011	\$ 22.63	\$ 16.10	\$ 25.89	\$ 22.46	\$ 47,062
Farmworkers and Laborers, Crop, Nursery, and Greenhouse	45-2092	\$ 13.30	\$ 11.39	\$ 14.25	\$ 13.42	\$ 27,657
Farmworkers, Farm, Ranch, and Aquacultural Animals	45-2093	\$ 13.13	\$ 10.42	\$ 14.48	\$ 13.30	\$ 27,306
First-Line Supervisors of Helpers, Laborers, and Material Movers, Hand	53-1021	\$ 20.34	\$ 12.87	\$ 24.07	\$ 20.10	\$ 42,302
First-Line Supervisors of Mechanics, Installers, and Repairers	49-1011	\$ 29.76	\$ 20.97	\$ 34.16	\$ 29.63	\$ 61,909
First-Line Supervisors of Office and Administrative Support Workers	43-1011	\$ 22.46	\$ 15.22	\$ 26.07	\$ 20.85	\$ 46,709
First-Line Supervisors of Production and Operating Workers	51-1011	\$ 25.92	\$ 17.95	\$ 29.90	\$ 24.58	\$ 53,905
First-Line Supervisors of Transportation and Material-Moving Machines	53-1031	\$ 26.11	\$ 17.97	\$ 30.18	\$ 26.48	\$ 54,312
Food Batchmakers	51-3092	\$ 12.55	\$ 8.82	\$ 14.41	\$ 12.41	\$ 26,100
General and Operations Managers	11-1021	\$ 38.96	\$ 17.83	\$ 49.52	\$ 31.13	\$ 81,035
Heavy and Tractor-Trailer Truck Drivers	53-3032	\$ 19.76	\$ 12.70	\$ 23.28	\$ 19.23	\$ 41,091
Helpers--Installation, Maintenance, and Repair Workers	49-9098	\$ 15.63	\$ 8.25	\$ 19.32	\$ 14.09	\$ 32,507
Helpers--Production Workers	51-9198	\$ 14.57	\$ 10.48	\$ 16.62	\$ 14.14	\$ 30,308
Industrial Machinery Mechanics	49-9041	\$ 22.51	\$ 17.40	\$ 25.06	\$ 21.97	\$ 46,814
Industrial Production Managers	11-3051	\$ 40.87	\$ 30.17	\$ 46.21	\$ 39.41	\$ 85,002
Industrial Truck and Tractor Operators	53-7051	\$ 15.17	\$ 12.58	\$ 16.47	\$ 14.57	\$ 31,560
Inspectors, Testers, Sorters, Samplers, and Weighers	51-9061	\$ 16.85	\$ 12.21	\$ 19.16	\$ 15.10	\$ 35,039
Installation, Maintenance, and Repair Workers, All Other	49-9099	\$ 22.50	\$ 15.85	\$ 25.82	\$ 24.12	\$ 46,796
Laborers and Freight, Stock, and Material Movers, Hand	53-7062	\$ 14.72	\$ 9.81	\$ 17.18	\$ 12.70	\$ 30,617
Licensed Practical and Licensed Vocational Nurses	29-2061	\$ 19.73	\$ 15.23	\$ 21.98	\$ 20.16	\$ 41,046
Light Truck or Delivery Services Drivers	53-3033	\$ 14.55	\$ 8.30	\$ 17.68	\$ 11.91	\$ 30,274
Maintenance and Repair Workers, General	49-9071	\$ 18.76	\$ 12.21	\$ 22.03	\$ 18.46	\$ 39,017
Material Moving Workers, All Other	53-7199	\$ 22.96	\$ 20.20	\$ 24.34	\$ 22.63	\$ 47,754
Meat, Poultry, and Fish Cutters and Trimmers	51-3022	\$ 13.19	\$ 12.26	\$ 13.65	\$ 13.39	\$ 27,432
Medical and Clinical Laboratory Technicians	29-2012	\$ 20.46	\$ 15.53	\$ 22.93	\$ 20.64	\$ 42,562
Medical and Clinical Laboratory Technologists	29-2011	\$ 27.62	\$ 21.51	\$ 30.67	\$ 27.93	\$ 57,441
Millwrights	49-9044	\$ 22.91	\$ 19.92	\$ 24.40	\$ 21.89	\$ 47,643
Mixing and Blending Machine Setters, Operators, and Tenders	51-9023	\$ 18.04	\$ 12.95	\$ 20.58	\$ 15.82	\$ 37,520
Packaging and Filling Machine Operators and Tenders	51-9111	\$ 14.79	\$ 10.16	\$ 17.11	\$ 13.56	\$ 30,774
Packers and Packagers, Hand	53-7064	\$ 9.82	\$ 8.34	\$ 10.56	\$ 9.32	\$ 20,426
Production Workers, All Other	51-9199	\$ 15.66	\$ 11.91	\$ 17.53	\$ 16.03	\$ 32,563
Production, Planning, and Expediting Clerks	43-5061	\$ 21.30	\$ 14.51	\$ 24.69	\$ 20.20	\$ 44,294
Registered Nurses	29-1141	\$ 29.17	\$ 23.93	\$ 31.79	\$ 28.77	\$ 60,666
Secretaries and Administrative Assistants, Except Legal, Medical, and Executive	43-6014	\$ 16.64	\$ 11.31	\$ 19.31	\$ 16.17	\$ 34,615
Separating, Filtering, Clarifying, Precipitating, and Still Machine Setters, Operators, and Tenders	51-9012	\$ 14.99	\$ 13.23	\$ 15.88	\$ 13.53	\$ 31,186
Shipping, Receiving, and Traffic Clerks	43-5071	\$ 15.40	\$ 11.41	\$ 17.39	\$ 15.44	\$ 32,033
Slaughterers and Meat Packers	51-3023	\$ 14.38	\$ 11.35	\$ 15.90	\$ 13.72	\$ 29,920
Stock Clerks and Order Fillers	43-5081	\$ 12.25	\$ 8.34	\$ 14.20	\$ 11.21	\$ 25,477
Transportation, Storage, and Distribution Managers	11-3071	\$ 36.44	\$ 24.56	\$ 42.38	\$ 32.31	\$ 75,796
Water and Wastewater Treatment Plant and System Operators	51-8031	\$ 21.97	\$ 14.86	\$ 25.52	\$ 22.74	\$ 45,695
Weighers, Measurers, Checkers, and Samplers, Recordkeeping	43-5111	\$ 12.73	\$ 10.34	\$ 13.93	\$ 11.36	\$ 26,483

The 2016 Iowa Wage data for the Washington County Laborshed area was produced by the Labor Force & Occupational Analysis Bureau to provide communities local information on wages by occupation. The source of the wage and employment data is based on the May 2015 OES estimates. Additional occupational wage and employment data can be found at <https://www.iowaworkforcedevelopment.gov/iawagereport>.