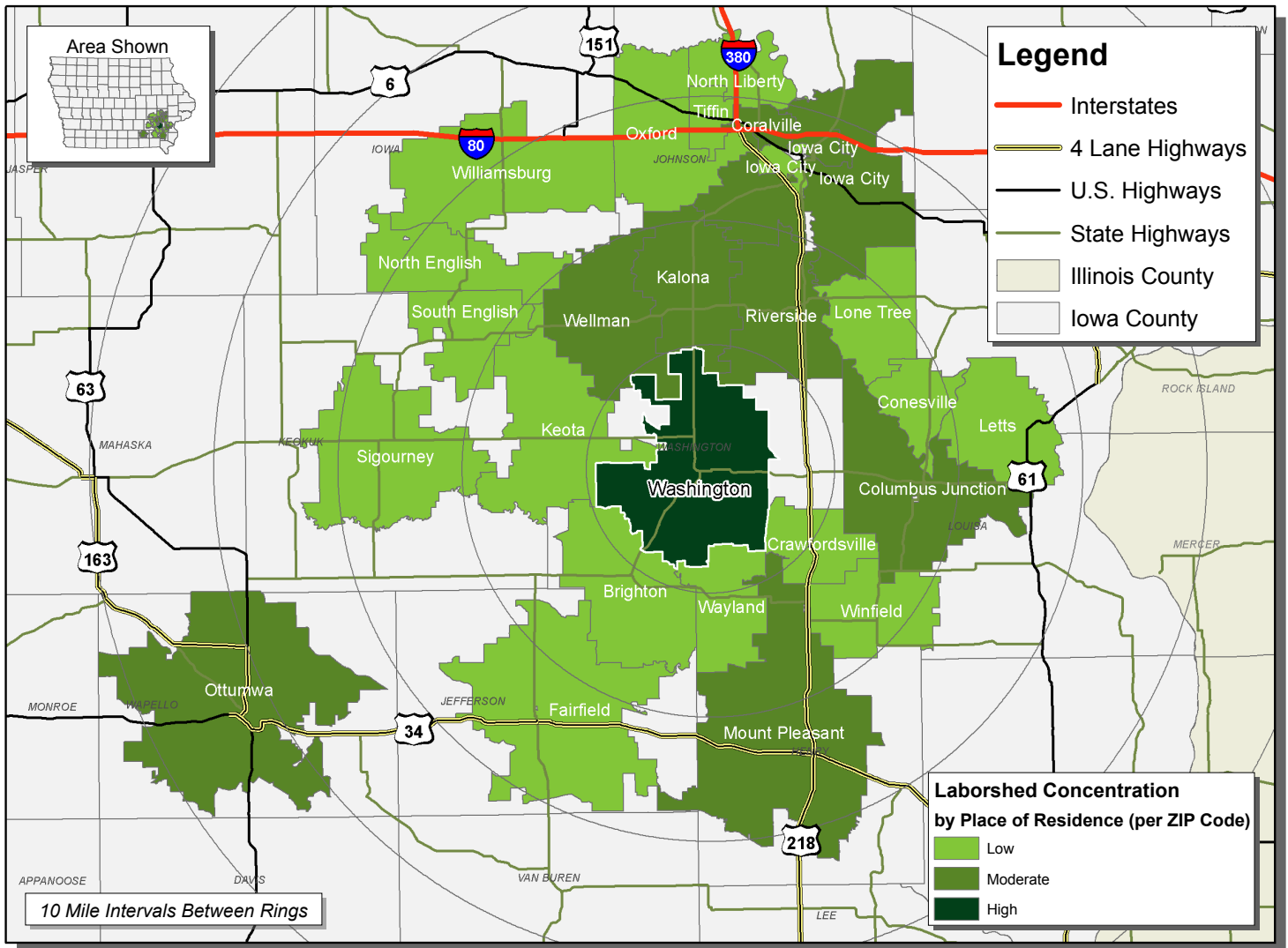


# LABOR CHARACTERISTICS FOOD PROCESSING



## WASHINGTON COUNTY, IOWA LABORSHED AREA

CONCENTRATION OF RESPONDENTS WITHIN THE LABORSHED AREA  
WITH TRANSFERABLE EXPERIENCE/SKILLS BY PLACE OF RESIDENCE



Workers who have transferable experience/skills in the industry are currently commuting an average of 15 miles one way for work. Those who are likely to change/accept employment are willing to commute an average of 23 miles one way for the right employment opportunity.

FOR MORE INFORMATION REGARDING THE WASHINGTON COUNTY LABORSHED, CONTACT:

**Washington Economic Development Group**  
205 West Main Street  
Washington, IA 52353-1722  
Phone: (319) 653-3942  
Email: [wedg@washingtioniowa.org](mailto:wedg@washingtioniowa.org)  
[www.washingtioniowa.org](http://www.washingtioniowa.org)

# LABOR CHARACTERISTICS



# FOOD PROCESSING

## ESTIMATED AVAILABLE LABOR PER OCCUPATIONAL CATEGORY:

### BUSINESS OPERATIONS:

- Managers - 2,415
- Supervisors - 390
- Accountants & Auditors - 1,231
- Bookkeeping Clerks - 2,420
- Office Clerks & Administrative Support Workers, All Other - 4,433
- Production, Planning & Expediting Clerks - 394
- Secretaries - 4,828
- Stock Clerks - 1,229

### PRODUCTION:

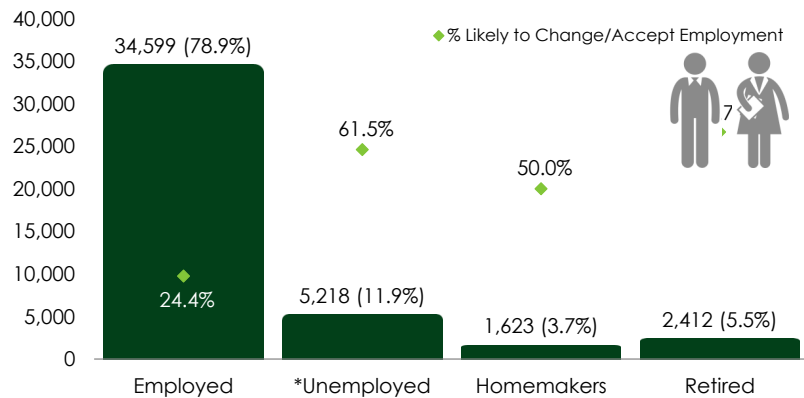
- Managers - 792
- Supervisors - 1,627
- Agricultural & Food Science Techs - 400
- Agricultural Workers, All Other - 399
- Butchers & Meat Cutters - 797
- Chemical Techs - 396
- Cleaning, Washing & Metal Pickling Equipment Operators - 401
- Cutting & Slicing Machine Operators - 397
- Industrial Machinery Mechanics - 792
- Inspectors - 404
- Installation, Maintenance & Repair Workers, All Other - 391
- Licensed Practical & Vocational Nurses - 402
- Life, Physical & Social Science Techs - 1,230
- Medical & Clinical Laboratory Technologists - 395
- Millwrights - 393
- Production Workers, All Other - 4,036
- Registered Nurses - 5,616
- Water & Liquid Waste Treatment Plant & System Operators - 789

### MATERIAL MOVERS:

- Managers - 398
- Supervisors - 386
- Forklift Operators - 410
- Heavy Truck Drivers - 3,642
- Laborers & Material Movers, Hand - 2,019

AN ESTIMATED TOTAL OF **43,852** PEOPLE IN THE LABORSHED AREA

## ESTIMATED TOTAL BY EMPLOYMENT STATUS (PERCENTAGE):



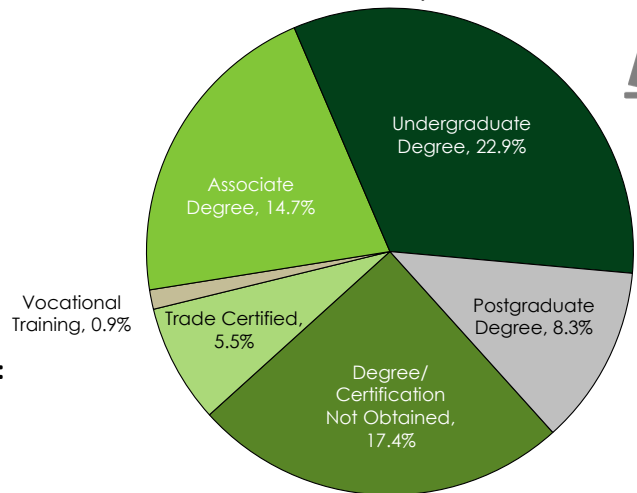
\*Employment status is self-identified by the survey respondent. The unemployment percentage does not reflect the unemployment rate published by the U.S. Bureau of Labor Statistics, which applies a stricter definition.

## EMPLOYMENT STATS:

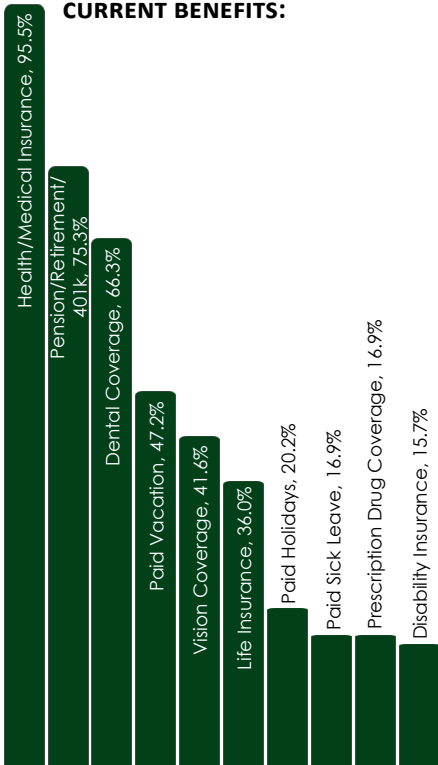
- 70.1% paid an hourly wage
- 70.6% are/were employed full-time
- 20.2% are/were employed part-time
- 5.5% are/were self-employed
- 8.1% hold two or more jobs
- Currently working an average of 41 hours/week

## EDUCATIONAL LEVEL:

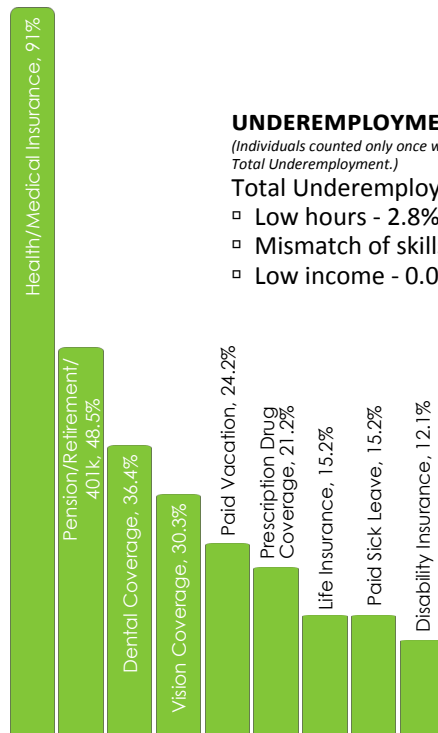
(69.7% HAVE AN EDUCATION BEYOND HIGH SCHOOL)



## CURRENT BENEFITS:



## DESIRED BENEFITS:



## UNDEREMPLOYMENT (ESTIMATED):

(Individuals counted only once when estimating Total Underemployment.)

Total Underemployment - 4.6% (176)

- Low hours - 2.8% (107)
- Mismatch of skills - 2.8% (107)
- Low income - 0.0%

## TOP JOB SEARCH RESOURCES:

(For those seeking employment opportunities, by use.)

- Internet - 71.1%
  - [www.linkedin.com](http://www.linkedin.com)
  - [www.indeed.com](http://www.indeed.com)
  - [www.careerbuilder.com](http://www.careerbuilder.com)
- Newspapers - 24.7%
  - The Gazette - Cedar Rapids
  - Washington Evening Journal
  - The Hawk Eye - Burlington
- IowaWORKS Centers - 17.5%
- Networking through friends, family or acquaintances - 10.3%

## WORKPLACE FLEXIBILITY:

(by percent of interest)

- Job teams - 77.8%
- Cross-training - 75.0%
- Job sharing - 44.4%
- Varied shifts - 36.1%
- Seasonal work - 55.6%
- Temporary work - 44.4%



# LABOR CHARACTERISTICS - WAGES

## FOOD PROCESSING



OCCUPATION	OCCUPATIONAL CODE	MEAN WAGE	ENTRY WAGE	EXPERIENCED WAGE	MEDIAN WAGE	MEAN ANNUAL SALARY
Accountants and Auditors	13-2011	\$ 33.22	\$ 19.56	\$ 40.05	\$ 28.16	\$ 69,098
Agricultural Inspectors	45-2011	\$ 16.89	\$ 10.75	\$ 19.96	\$ 12.17	\$ 35,134
Bakers	51-3011	\$ 13.35	\$ 9.76	\$ 15.14	\$ 12.98	\$ 27,762
Biomedical Engineers	17-2031	\$ 21.30	\$ 10.69	\$ 26.61	\$ 12.02	\$ 44,307
Bookkeeping, Accounting, and Auditing Clerks	43-3031	\$ 15.92	\$ 10.22	\$ 18.77	\$ 15.35	\$ 33,110
Butchers and Meat Cutters	51-3021	\$ 12.29	\$ 10.02	\$ 13.43	\$ 11.50	\$ 25,572
Buyers and Purchasing Agents, Farm Products	13-1021	\$ 26.58	\$ 20.26	\$ 29.74	\$ 26.30	\$ 55,289
Chemical Engineers	17-2041	\$ 51.15	\$ 35.06	\$ 59.19	\$ 47.68	\$ 106,385
Chemical Technicians	19-4031	\$ 20.98	\$ 16.20	\$ 23.37	\$ 20.51	\$ 43,631
Chemists	19-2031	\$ 30.62	\$ 21.00	\$ 35.43	\$ 25.96	\$ 63,695
Executive Secretaries and Executive Administrative Assistants	43-6011	\$ 22.87	\$ 16.90	\$ 25.85	\$ 22.65	\$ 47,568
Farmworkers, Farm, Ranch, and Aquacultural Animals	45-2093	\$ 14.36	\$ 11.37	\$ 15.86	\$ 14.64	\$ 29,873
First-Line Supervisors of Helpers, Laborers, and Material Movers, Hand	53-1021	\$ 20.07	\$ 14.84	\$ 22.69	\$ 19.11	\$ 41,749
First-Line Supervisors of Mechanics, Installers, and Repairers	49-1011	\$ 29.60	\$ 20.33	\$ 34.23	\$ 29.90	\$ 61,561
First-Line Supervisors of Office and Administrative Support Workers	43-1011	\$ 25.48	\$ 16.66	\$ 29.89	\$ 23.74	\$ 53,002
First-Line Supervisors of Production and Operating Workers	51-1011	\$ 27.11	\$ 18.87	\$ 31.24	\$ 25.94	\$ 56,396
First-Line Supervisors of Transportation and Material-Moving Machines	53-1031	\$ 26.28	\$ 18.74	\$ 30.05	\$ 26.48	\$ 54,659
Food Batchmakers	51-3092	\$ 13.82	\$ 9.56	\$ 15.96	\$ 13.42	\$ 28,755
General and Operations Managers	11-1021	\$ 40.65	\$ 17.21	\$ 52.37	\$ 30.98	\$ 84,545
Heavy and Tractor-Trailer Truck Drivers	53-3032	\$ 20.27	\$ 13.35	\$ 23.73	\$ 19.70	\$ 42,165
Helpers--Installation, Maintenance, and Repair Workers	49-9098	\$ 15.62	\$ 8.57	\$ 19.14	\$ 15.27	\$ 32,482
Helpers--Production Workers	51-9198	\$ 13.78	\$ 10.67	\$ 15.33	\$ 13.24	\$ 28,657
Industrial Machinery Mechanics	49-9041	\$ 22.53	\$ 16.47	\$ 25.55	\$ 22.01	\$ 46,854
Industrial Production Managers	11-3051	\$ 43.51	\$ 28.47	\$ 51.02	\$ 39.45	\$ 90,493
Industrial Truck and Tractor Operators	53-7051	\$ 16.21	\$ 12.88	\$ 17.87	\$ 15.67	\$ 33,717
Inspectors, Testers, Sorters, Samplers, and Weighers	51-9061	\$ 16.25	\$ 12.21	\$ 18.26	\$ 15.37	\$ 33,793
Installation, Maintenance, and Repair Workers, All Other	49-9099	\$ 21.14	\$ 12.54	\$ 25.44	\$ 22.80	\$ 43,970
Laborers and Freight, Stock, and Material Movers, Hand	53-7062	\$ 14.51	\$ 9.55	\$ 16.99	\$ 12.51	\$ 30,180
Licensed Practical and Licensed Vocational Nurses	29-2061	\$ 19.26	\$ 15.59	\$ 21.09	\$ 19.22	\$ 40,058
Light Truck or Delivery Services Drivers	53-3033	\$ 15.61	\$ 9.14	\$ 18.84	\$ 14.06	\$ 32,468
Maintenance and Repair Workers, General	49-9071	\$ 18.71	\$ 11.97	\$ 22.08	\$ 18.01	\$ 38,911
Meat, Poultry, and Fish Cutters and Trimmers	51-3022	\$ 13.57	\$ 12.76	\$ 13.98	\$ 13.63	\$ 28,231
Medical and Clinical Laboratory Technicians	29-2012	\$ 20.59	\$ 15.47	\$ 23.14	\$ 20.95	\$ 42,819
Medical and Clinical Laboratory Technologists	29-2011	\$ 28.26	\$ 21.91	\$ 31.44	\$ 28.25	\$ 58,782
Millwrights	49-9044	\$ 26.27	\$ 19.10	\$ 29.85	\$ 25.07	\$ 54,641
Mixing and Blending Machine Setters, Operators, and Tenders	51-9023	\$ 17.29	\$ 12.42	\$ 19.72	\$ 15.94	\$ 35,961
Packaging and Filling Machine Operators and Tenders	51-9111	\$ 14.51	\$ 10.81	\$ 16.35	\$ 13.57	\$ 30,173
Packers and Packagers, Hand	53-7064	\$ 12.08	\$ 8.75	\$ 13.74	\$ 12.41	\$ 25,123
Production Workers, All Other	51-9199	\$ 18.17	\$ 12.50	\$ 21.01	\$ 19.63	\$ 37,803
Production, Planning, and Expediting Clerks	43-5061	\$ 20.97	\$ 14.35	\$ 24.28	\$ 18.90	\$ 43,623
Registered Nurses	29-1141	\$ 29.72	\$ 24.25	\$ 32.45	\$ 29.35	\$ 61,819
Secretaries and Administrative Assistants, Except Legal, Medical, and Executive	43-6014	\$ 17.35	\$ 11.78	\$ 20.13	\$ 17.00	\$ 36,080
Separating, Filtering, Clarifying, Precipitating, and Still Machine Setters, Operators, and Tenders	51-9012	\$ 18.14	\$ 13.53	\$ 20.44	\$ 17.56	\$ 37,727
Shipping, Receiving, and Traffic Clerks	43-5071	\$ 15.54	\$ 11.75	\$ 17.44	\$ 15.05	\$ 32,326
Slaughterers and Meat Packers	51-3023	\$ 14.48	\$ 12.49	\$ 15.47	\$ 13.88	\$ 30,118
Stock Clerks and Order Fillers	43-5081	\$ 13.12	\$ 8.91	\$ 15.22	\$ 12.05	\$ 27,288
Water and Wastewater Treatment Plant and System Operators	51-8031	\$ 21.63	\$ 13.67	\$ 25.61	\$ 22.32	\$ 44,983
Weighers, Measurers, Checkers, and Samplers, Recordkeeping	43-5111	\$ 12.38	\$ 10.18	\$ 13.48	\$ 11.36	\$ 25,748

The 2017 Iowa Wage data for the Washington County Laborshed area was produced by the Labor Force & Occupational Analysis Bureau to provide communities local information on wages by occupation. The source of the wage and employment data is based on the May 2016 OES estimates. Additional occupational wage and employment data can be found at <https://www.iowaworkforcedevelopment.gov/iawagereport>.