

Getting Your Piece of the LEED Pie



- What is LEED?
- Why LEED?
- Who gets involved and why?
- HOW CAN YOU GET INVOLVED?

About your Presenter

- Greg Hamra

- LEED Accredited Professional BD+C
BPI Building Analyst and Envelope Professional
Senior LEED Training Specialist for Everblue



- Member USGBC-SF
- Greg@Everblue.edu
- www.everblue.edu/hamra

“The illiterate of the 21st century will not be those who cannot read and write, but those who cannot learn, unlearn, and relearn.”

– Alvin Toffler Rethinking the Future

Veteran Founded



- Accredited through the U.S. Department of Education
- Recognized by The White House as a "[Champion of Change](#)"
- USGBC's largest LEED educator with training in more than 80 locations in the U.S. and internationally.
- Training provider for the highest levels of our government:



ARQUITECTONICA

Balfour Beatty
Construction



SOUTHERN CALIFORNIA
EDISON®

KENT
CONSTRUCTION



Disney

U.S. DEPARTMENT OF
ENERGY



Everblue Classes Nationwide



- BPI Energy Auditor
 - Building Analyst (Energy Auditor)
 - Envelope Professional
 - Heating Specialist
 - Multifamily Professional
- BPI Technician
 - Weatherization, Air Sealing & Insulation
- RESNET HERS Rater
- LEED Green Associate
- LEED AP
 - Design, & Construction
 - Operations & Maintenance
 - Homes
 - Neighborhood Development
- Corporate Sustainability
- Carbon Accounting
- Solar & Wind
 - Solar PV Bootcamp
 - Business of Solar
 - Intro to Wind

Training & Certification

everblue[™]
training institute



Training & Certification

everblue™
training institute



Training & Certification

everblue™
training institute





U.S. GREEN BUILDING COUNCIL

LEED PLATINUM

2009



Leadership in Energy & Environmental Design



Leadership in Energy and Environmental Design

A leading-edge system
for certifying the
greenest performing
buildings in the world

LEED® Facts
Building size 12,500 square ft
Type of building
LEED for Core & Shell Development
Certification awarded July 27, 2006
Platinum

Sustainable Sites	4
Water Efficiency	5
Energy & Atmosphere	9
Materials & Resources	6
Indoor Environmental Quality	8
Innovation & Design	7

*Out of a possible 62 points

LEED® Facts
Building size 12,500 square ft
Type of building
LEED for Core & Shell Development
Certification awarded July 27, 2006
Platinum 49*

Sustainable Sites	4
Water Efficiency	5
Energy & Atmosphere	9
Materials & Resources	6
Indoor Environmental Quality	8
Innovation & Design	7

*Out of a possible 62 points

LEED® Facts
Building size 12,500 square ft
Type of building
LEED for Core & Shell Development
Certification awarded July 27, 2006
Platinum 49*

Sustainable Sites	4
Water Efficiency	5
Energy & Atmosphere	9
Materials & Resources	6
Indoor Environmental Quality	8
Innovation & Design	7

*Out of a possible 62 points

LEED® Facts
Building size 12,500 square ft
Type of building
LEED for Core & Shell Development
Certification awarded July 27, 2006
Platinum 49*

Sustainable Sites	4
Water Efficiency	5
Energy & Atmosphere	9
Materials & Resources	6
Indoor Environmental Quality	8
Innovation & Design	7

*Out of a possible 62 points

What is green building?



1450 Brickell

- 35 stories / 583k sf



LEED EB and CI

- Retrofit 6515 windows (R2 to R8)
- Green Power
- Projected savings \$4.4 M/yr.



- LEED = Leadership in Energy and Environmental Design
- A rating system to distinguish high performing buildings.

*LEED takes a **Whole Building** approach to sustainability.*

LEED integrates many disciplines and fosters a holistic approach to design and construction.

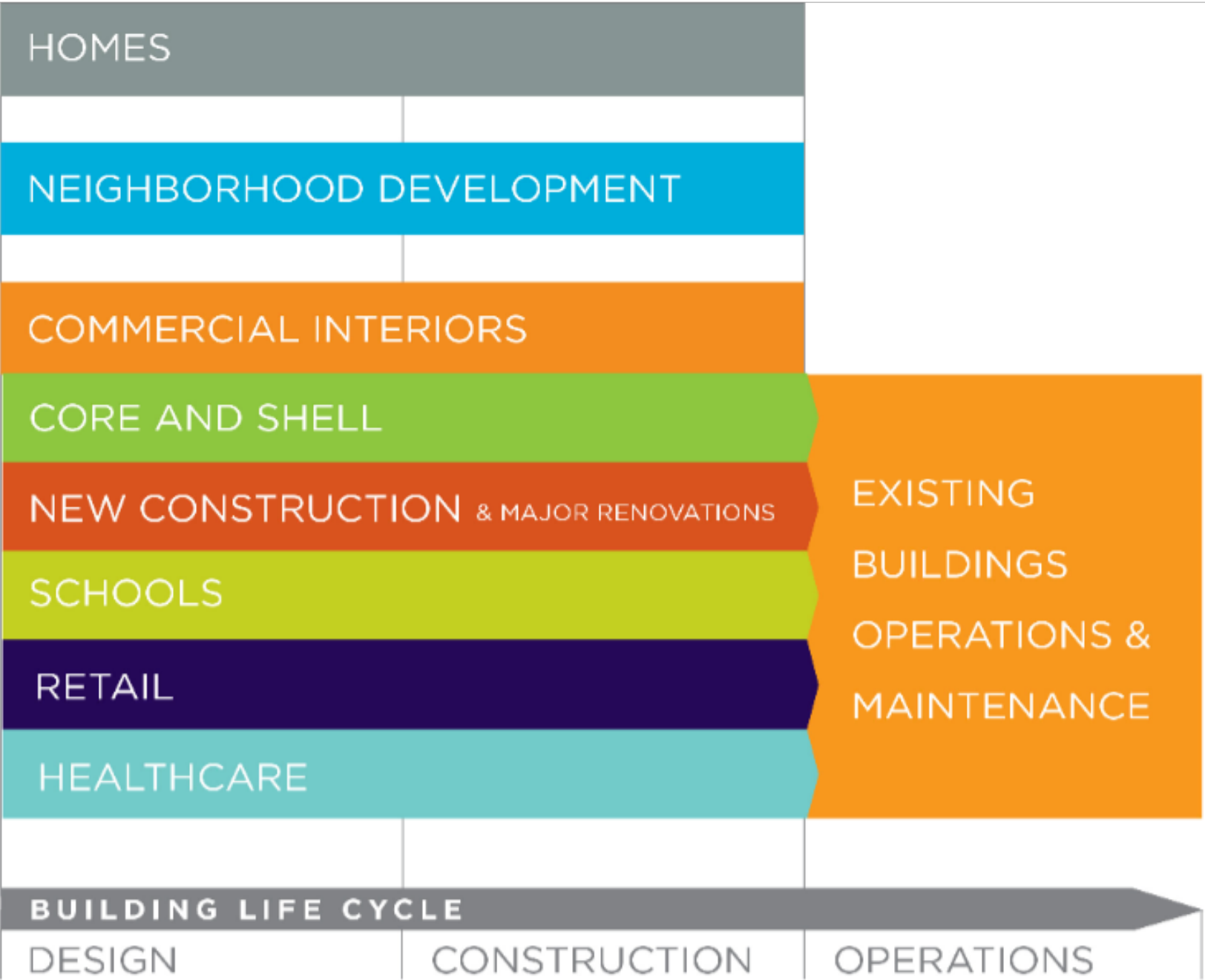
Example: Lighting power reduction is related to reduced A/C load

and... envelope, outdoor air delivery, orientation, shading, occupancy, interior color choices.

When systems work well together:

- Rebates & tax incentives can be maximized
- ↑ re-sale value, ↑ occupancy
- ↓ operational costs, ↑ ROI
- Better occupant health = more productive employees

LEED rating systems



LEED Is Consensus-Based



Architects

**Product
Manufacturers**

**Building
Owners**

**Federal,
Local,
and State
Governments**

**Non Profit
Leaders**

Planners



Engineers

**Financial
Planners**

**Interior
Designers**

**Landscape
Architects**

**Utility
Managers**

**Property
Managers**

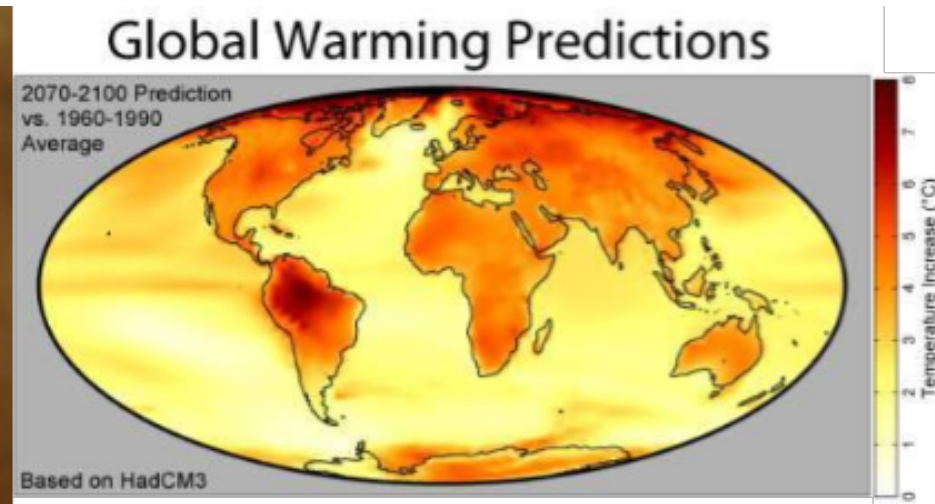
**Code
Officials**

**Building
Tenants**

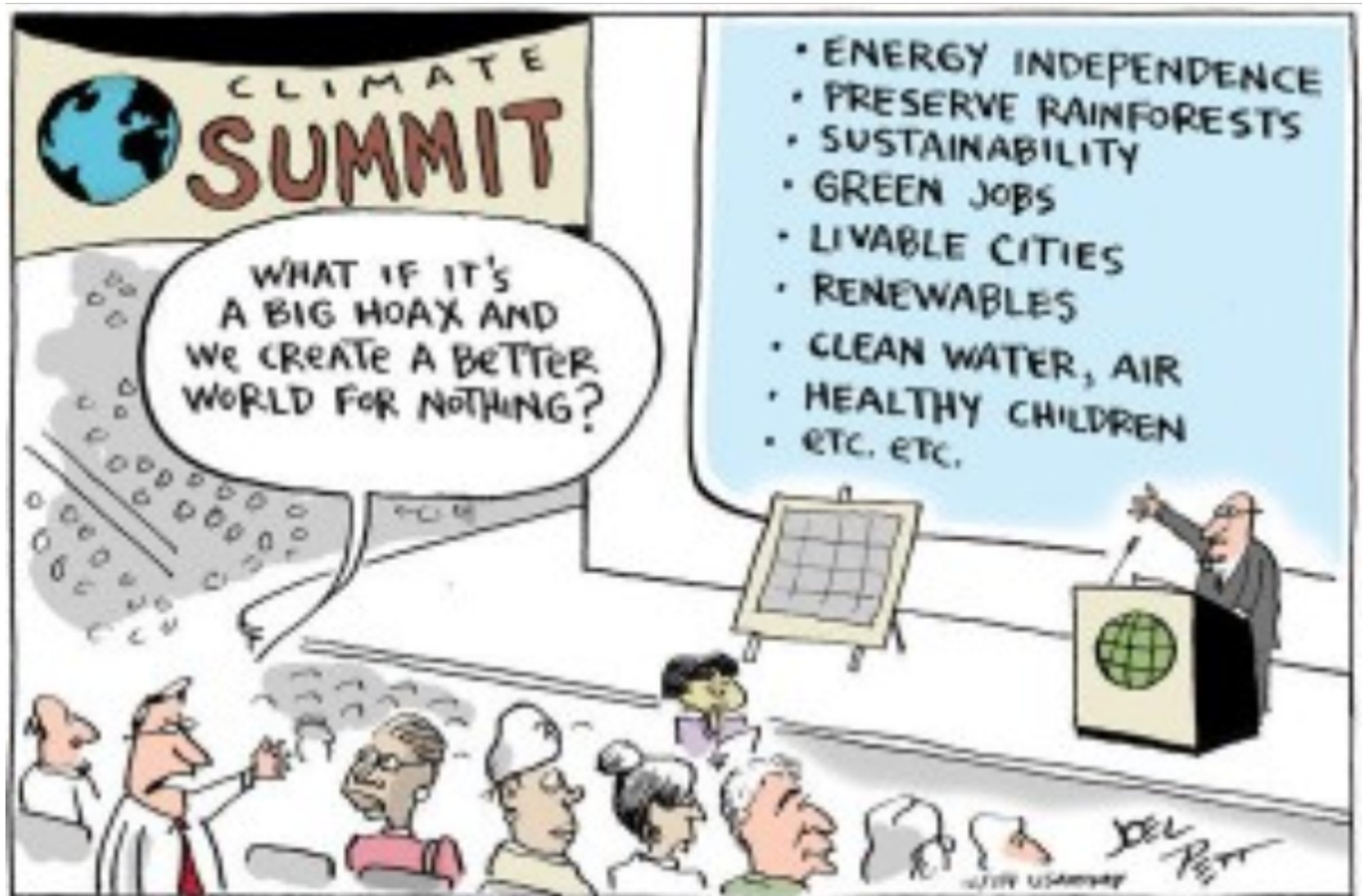
Why does LEED exist?

1. BUILDINGS consume almost 40% of the energy and 74% of the electricity produced in the United States. (80% in NYC)
2. Burning Fossil Fuels produce: CO, CO₂, Sulfur Dioxide, Nitrogen Dioxide, Arsenic, and Mercury
3. Improved operations can save LOTS of money.

Dirty... Dangerous... Depleting



Adaptation



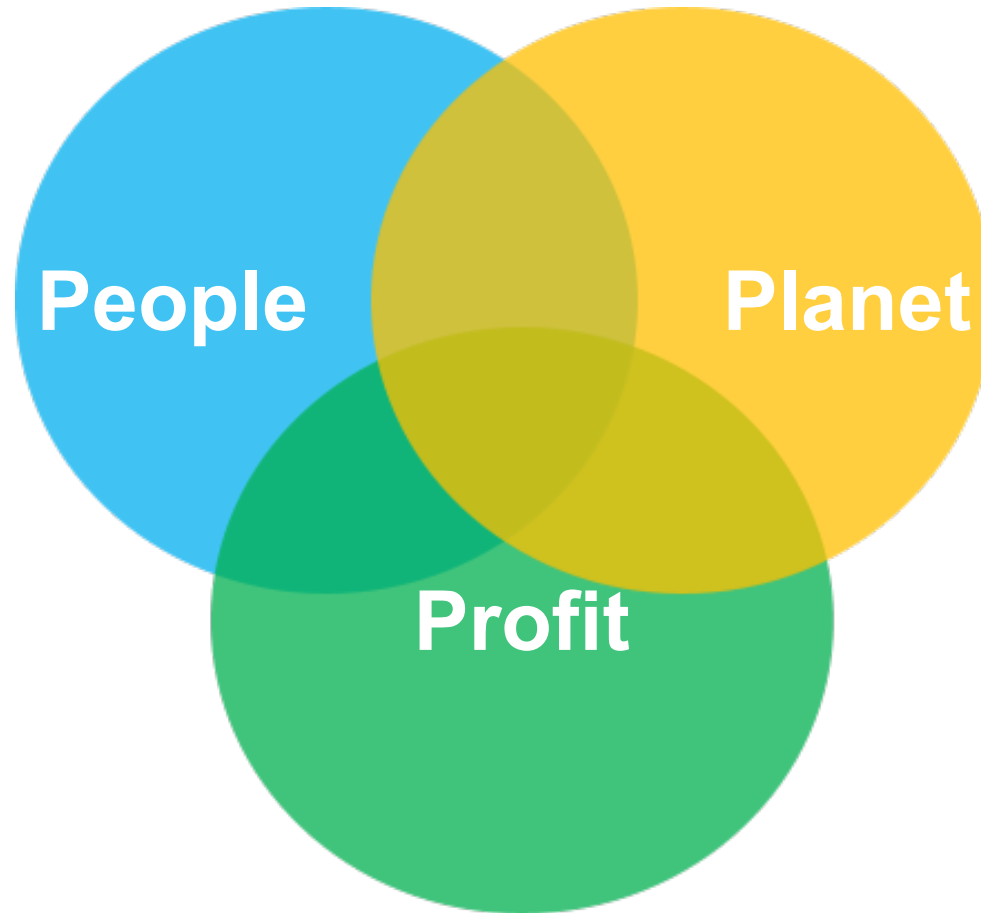
Global CO₂ Emissions by Sector

#1. Buildings

#2. Transportation

#3. Industry

LEED's Triple Bottom Line



Green Building Occupants Are Healthier & More Productive

- In the U.S., people spend, on average, 90% or more of their time indoors*
- Green buildings typically have better indoor air quality and lighting

Why the Demand?

- Unprecedented level of government initiatives
- Heightened residential demand for green construction
- Improvements in sustainable materials
- Lowered operational costs

Square Footage of Commercial LEED Certified Projects (Cumulative)

1.4 billion* 

Commercial LEED Certified Projects (Cumulative)

8,579*

Commercial LEED Registered Projects

Total Currently Registered

30,116*

Who gets involved in LEED?

- Architects
- Engineers
- Construction Managers
- Contractors
- Project Managers
- Property Managers
- Building Owners
- Facility Managers
- Real Estate Professionals
- Building Inspectors
- Landscapers
- Attorneys
- **Product Sales Reps**
- **Service reps (green cleaning, pest management, maint.)**

Who earns a LEED credential?

Everblue[™]
training institute

- Those involved in supporting green Building, Design or Operations.
- Anyone wishing to:
 - gain competitive advantage by differentiating themselves from the competition
 - establish ‘green cred’ in the marketplace
 - be able to talk the talk while avoiding “credibility killers.”

Leeds vs LEED



LEED Certified building

- What is the Green Associate Exam?

GREEN ASSOCIATE

Building
Operations &
Maintenance

Homes

Interior
Design &
Construction

Building
Design &
Construction

Neighborhood
Development

- Indicate knowledge of LEED Building Design, Construction, and Operation.
- Tiers 1 or 2 required for most LEED project RFPs, especially Federal work.

Tier 1



LEED GA exam at a glance

- 2 Hours/100 Questions
- \$50 Application Fee
- \$150-\$200 Exam Fee

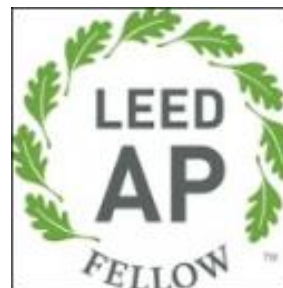
Tier 2



LEED AP+ exam at a glance

- 2 Hours/100 Questions
- \$100 Application Fee
- \$150-\$250 Exam Fee

Tier 3



An elite class of leading professionals distinguished by their years of experience and a peer review of their project portfolio.

- Buildings can become LEED Certified
- Individuals can become LEED Accredited
- Organizations can become USGBC national members
- Points are earned for meeting certain criteria



Typical Class Agenda

Introduction

1. Test Format & Exam Interface
2. Overview of LEED Rating Systems

Core Components of LEED

- Sustainable Sites
 - Water Efficiency
 - Energy & Atmosphere
 - Materials & Resources
 - Indoor Environmental Quality
 - Innovation in Design & Regionalization
- 

Green Building

1. How Green Building is Different
2. LEED Process
3. Post-Course Study Strategies

The Role of a Green Associate

everblue[™]
training institute

- A LEED Green Associate is an individual who has passed the exam and possesses the knowledge and skill to understand and support green design, construction, and operations.

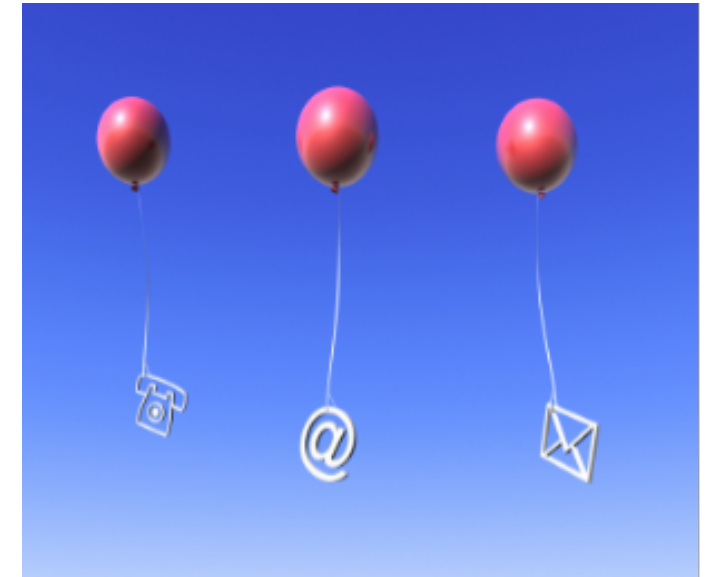


Thank You

everblue™
training institute



everblue™
training institute



Greg@Everblue.edu

Everblue.edu/hamra

USGBCSF.org

5/12/2011

Everblue Training Institute
www.everblue.edu