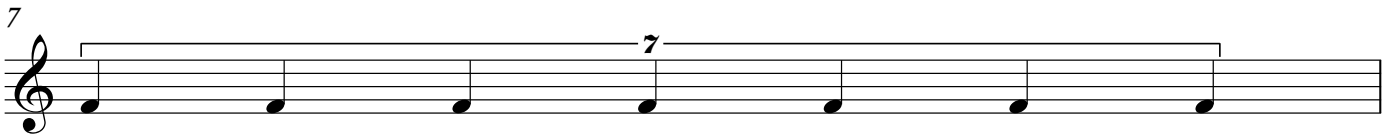
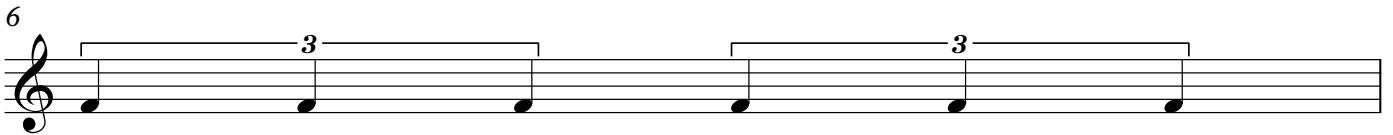
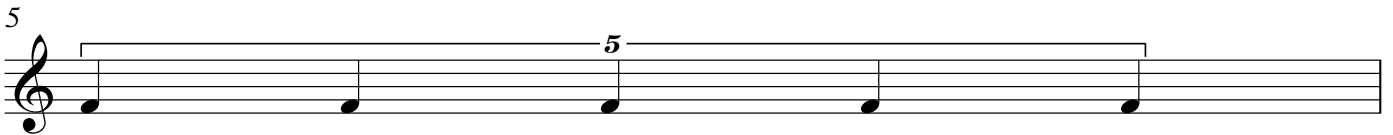
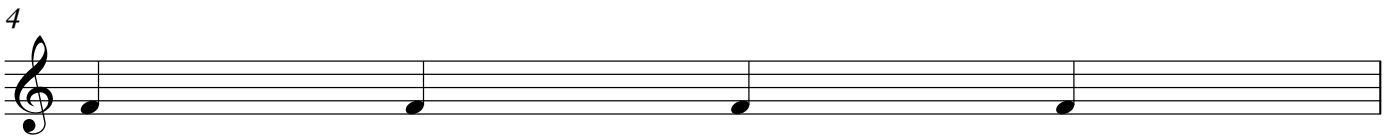
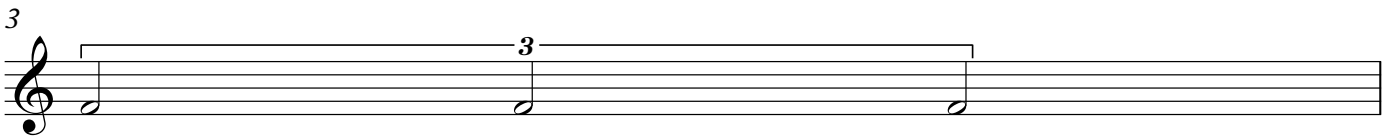
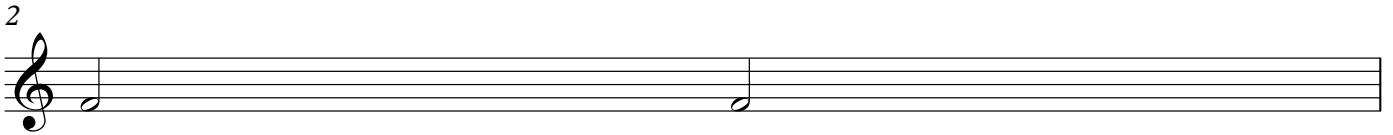
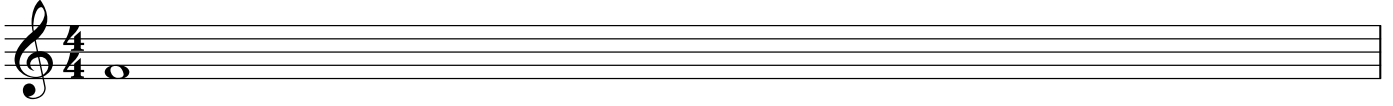


Possible Note Groupings in Common Time

from 1 to 32 beats per measure, all notes evenly spaced in duration



2

10

5 5

A musical staff in treble clef. It contains two groups of five eighth notes, each preceded by a horizontal line and the number '5' above it, indicating a five-measure rest.

11

11

A musical staff in treble clef. It contains one group of eleven eighth notes, preceded by a horizontal line and the number '11' above it, indicating an eleven-measure rest.

12

3 3 3 3

A musical staff in treble clef. It contains four groups of three eighth notes, each preceded by a horizontal line and the number '3' above it, indicating a three-measure rest.

13

13

A musical staff in treble clef. It contains one group of thirteen eighth notes, preceded by a horizontal line and the number '13' above it, indicating a thirteen-measure rest.

14

7 7

A musical staff in treble clef. It contains two groups of seven eighth notes, each preceded by a horizontal line and the number '7' above it, indicating a seven-measure rest.

15

15

A musical staff in treble clef. It contains one group of fifteen eighth notes, preceded by a horizontal line and the number '15' above it, indicating a fifteen-measure rest.

16

A musical staff in treble clef. It contains one group of sixteen eighth notes, preceded by a horizontal line, indicating a sixteen-measure rest.

17

17

A musical staff in treble clef. It contains one group of seventeen eighth notes, preceded by a horizontal line and the number '17' above it, indicating a seventeen-measure rest.

18

9 9

A musical staff in treble clef. It contains two groups of nine eighth notes, each preceded by a horizontal line and the number '9' above it, indicating a nine-measure rest.

19

19

A musical staff in treble clef. It contains one group of nineteen eighth notes, preceded by a horizontal line and the number '19' above it, indicating a nineteen-measure rest.

20

5 5 5 5

21

21

22

11 11

23

23

24

6 6 6 6

25

25

26

13 13

27

27

28

7 7 7 7

29

29

4

30



31



32

