

POL/EVST2031: Environmental Policy  
Spring 2013

## ENVIRONMENTAL POLICY ASSIGNMENTS

### Overview

This document describes the main assignments in POL/EVST2031 and how your performance in these assignments will be evaluated.

### Case discussions

You will use Google Groups (<https://groups.google.com>) to communicate with other students about the week's assigned case. You will need to sign up for a free Google account in the first week of POL/EVST2031. To sign up, go to <https://accounts.google.com/SignUp> and follow the instructions.

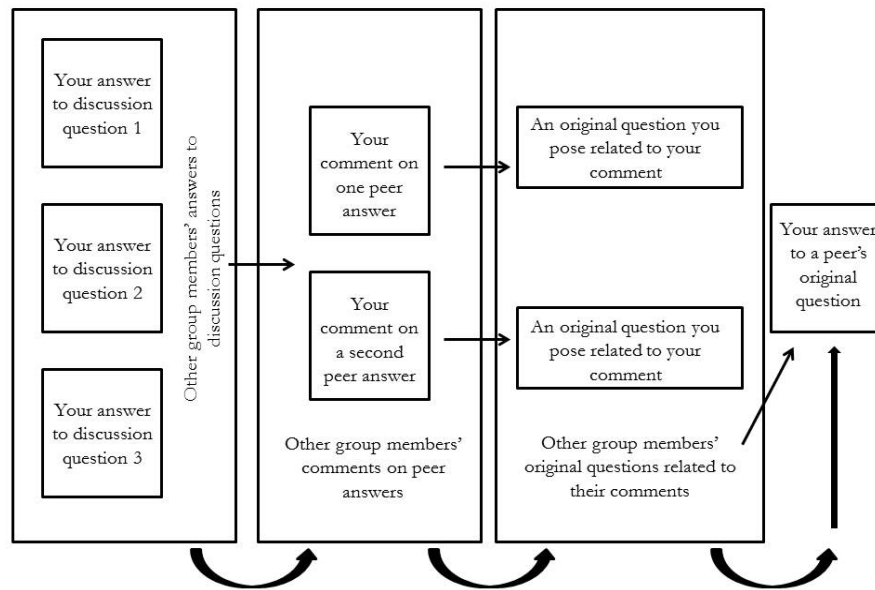
By MIDNIGHT ON FRIDAY, JAN. 11, email me ([gwen.arnold.polevst2031@gmail.com](mailto:gwen.arnold.polevst2031@gmail.com)) your Google ID so that I can assign you to your discussion group. There is no case discussion in the first week of class so that you have time to set up your account and deal with any Google Groups access issues.

Each case has at least three discussion questions. When the case comes from the Layzer text, the questions are in the book at the end of the case. When the case is from an alternate source, I will email you the discussion questions. You (and every other member of your group) must answer these questions, devoting at least one paragraph to each answer. (Remember what you should have learned in a grade school: A paragraph has at least three sentences.)

You must read the answers written by your group members and then comment on two different answers. You must finish each of your two comments with an original question. Each question should connect both the case and to ideas you raised in your comments. You must then answer at least one of the questions posed by your peers (not your own question). The flow of the case discussion is depicted visually on the next page.

The case discussion Q and A must occur between midnight on the Sunday before each Monday class and midnight on Friday. Any case-related questions or comments submitted after the Friday midnight deadline will be considered late and thus ineligible for any points.

You will be part of three discussion groups over the course of the semester. The first group will be disbanded and its members randomly assigned to other groups after Week 4. The second group will be disbanded and its members randomly assigned to other groups after Week 9.



Your weekly participation in case discussions will be worth 1.9 points, assigned as follows. Partial points will be awarded in situations wherein your discussion contributions do not completely fulfill requirements:

Case discussion grading rubric	Points
Quality of your answers to the discussion questions posed by Layzer or the instructor	0.7
Quality of your comments on peers' answers to discussion questions	0.3
Quality of the two original questions you pose	0.3
Quality of your response to at least one of your peers' original questions	0.6
Total	1.9

Since 1.9 multiplied by 13 weeks (no case discussion in the first week) is 24.7, the final 0.3 points in the 25-point case discussion allotment will be awarded at the end of the semester based on the overall quality of your contributions to case discussions.

### Journal entries

In this assignment, you will use Blogger to keep a journal wherein you respond to prompts that ask you to reflect critically on the week's topics. You will need a Google ID to use Blogger. After acquiring an ID, go to <http://www.blogger.com> to sign up for a blog that uses this URL:

<http://polevst2031FirstnameLastname.blogspot.com>

(Insert your name in place of "FirstnameLastname.")

Once you have established the blog, follow these steps to prepare to use it for your class journal. Most of them can be accomplished using the “settings” tab or similar management tools on the left-hand toolbar:

- Assign a title to the blog: [Firstname Lastname’s POL/EVST2031 Class Journal]
- Invite the instructor to be an author (gwen.arnold.polevst2031@gmail.com) and give her admin privileges.
- Adjust the privacy settings so that the blog is not listed on Blogger and is not visible to search engines.
- Restrict “blog readers” to “blog authors” (unless you want others to be able to read your work and adjust the readership scope accordingly).
- Restrict commenting to “only members of this blog.”\*
- Specify that “email moderation requests” for comments will be sent to your email address.\*
- Set comment moderation to “always.”\*
- Select “show word verification” for comments.\*
- Under “Adult content?” click “no.”

\*The comment function will be the mechanism by which I give you feedback on your journal entry and indicate your grade. Moderating comments in this manner will allow them to go to your email inbox first. Once you review them, you can choose whether you want them to post your blog. This process ensures that if you invite others to view your blog, they do not view your grade unless you want them to do so.

Once you have completed these steps, email the instructor your blog URL to indicate that it is active and ready for use. You must make the blog active by MIDNIGHT ON FRIDAY, JAN. 11.

Your online journal will generally be private, available only to you and the instructor unless you choose to allow others to read it. In any given week I will select some of the best journal entries to show to the class. If I select your entry, I will ask you for permission to share it; you do not have to allow it to be shared if you would prefer not to do so.

The journal prompts for the entire semester are available on Blackboard. Your journal entry will be due by Friday at midnight. You can submit the week’s journal entry up to 24 hours late, with a 50 percent penalty; after 24 hours, late journal entries will not be accepted.

The amount and type of work required for each prompt will vary, but the prompt will be accompanied by guidelines that explain the specific relevant expectations. You should expect that responding to a prompt will take 0.5–3 hours per week. Your weekly journal entry will be worth 1.9 points, assigned as follows. Partial points will be awarded in situations wherein a journal entry does not completely fulfill requirements:

<b>Journal rubric</b>	<b>Points</b>
Quality of your responses to journal prompts	1.6
Quality of your writing in journal responses	0.3
Total	1.9

Since 1.9 multiplied by 13 weeks (no journal entry the first week) is 24.7, the final 0.3 points in the journaling allotment will be allocated at the end of the semester based on the overall quality of your journal entries.

### **Participation**

Each missed class in a given week entails a loss of 0.45 participation points. (If your absence is excused, you will earn full participation points for the missed class.)

Failure to contribute to class discussions in at least two of the week's class periods also entails a loss of 0.45 participation points per week. (These values are 0.4 in the first week.)

### **Quizzes**

If you keep up on the course readings and you think critically about them, you will do well on the quizzes. If you don't keep up, you are much less likely to do well. The quizzes will contain 1–4 questions and each question will specify the associated point value.

Quizzes will be administered at the start of the class period and will last 5–10 minutes depending on the number and types of questions. You will not be able to use your notes or other class materials. Quizzes are individual assignments. If you arrive late to class, you will have to complete your quiz in the time remaining for the other students (e.g., if you are 8 minutes late for a 10-minute quiz, you will have 2 minutes to complete it). If you arrive so late that you miss the quiz, you will not be able to take it.

Any indication of cheating will earn you a zero for the quiz. Quiz answers will be posted on Blackboard within 24 hours of the quiz administration. Your quiz grade will be posted on Blackboard by the end of the week. Your quiz will not be returned in class, but you can pick it up from the instructor's office during office hours.