

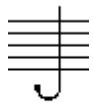
The Staff - Treble Clef

At the beginning of each staff there is a clef. The treble clef (also known as G clef) looks like this:



The treble clef gives establishes a landmark on the note G on the 2nd line of the treble staff.

To draw the treble clef, draw:
the line and tail



1.

the top loop



2.

the left loop



3.

the right loop



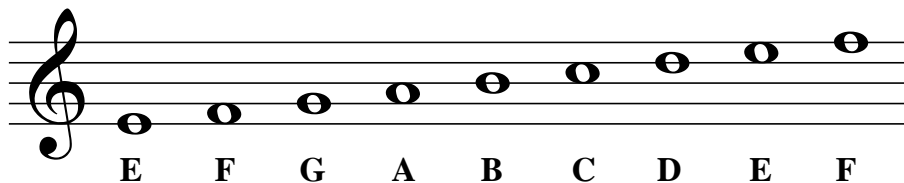
4.

the curl

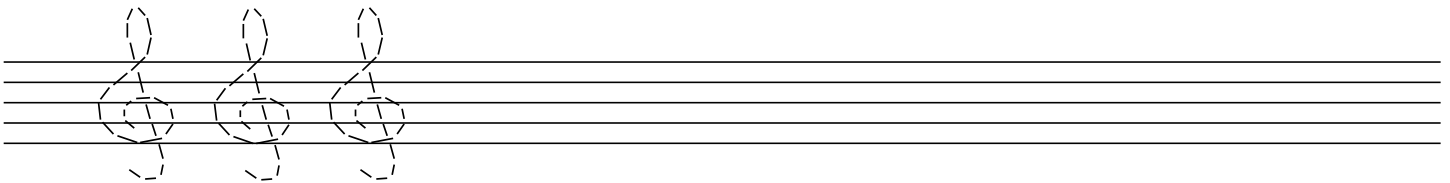


5.

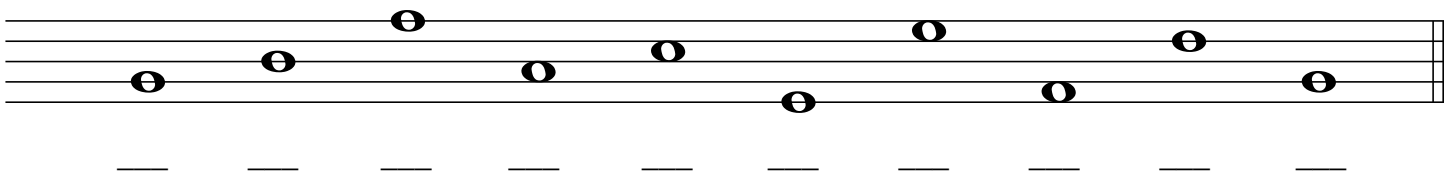
Notes are named after the first seven letters of the alphabet (A through G).



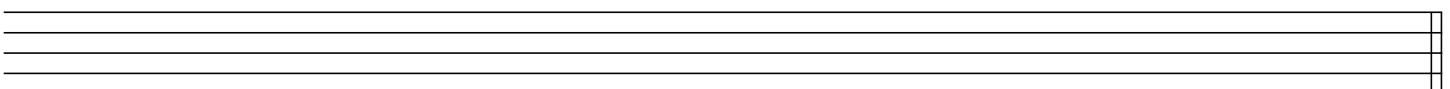
1. Try drawing the treble clef sign by tracing over the dotted lines. Then draw five more of your own.



2. Draw a treble clef at the beginning of the staff. Then write the letter names of each note.



3. Draw a treble clef at the beginning of the staff. Then draw the notes indicated. If a note can be written on more than one place on the staff, choose one.



G E B C D B A C D F