

# AGOURA HILLS PLAZA

28035 Dorothy Drive • Agoura Hills, California



For more information  
please contact:

**CORY RICHMOND**  
PRINCIPAL  
**818.444.4915**  
crichmond@lee-re.com  
License ID #01225466

**ERIC NISHIMOTO**  
ASSOCIATE  
**818.444.4984**  
enishimoto@lee-re.com  
License ID #01462339



COMMERCIAL REAL ESTATE SERVICES  
No warranty or representation is made to the accuracy of the  
foregoing information. Terms of sale or lease and availability are  
subject to change or withdrawal without notice.





## LEASING TERMS

<b>Available:</b>	Vacant and Move-In Condition
<b>Rent Type:</b>	Modified Gross (Plus electricity & janitorial)
<b>Lease Term:</b>	1-10 Years
<b>Parking:</b>	Up to 2/1000 RSF Free Parking

## AVAILABILITY

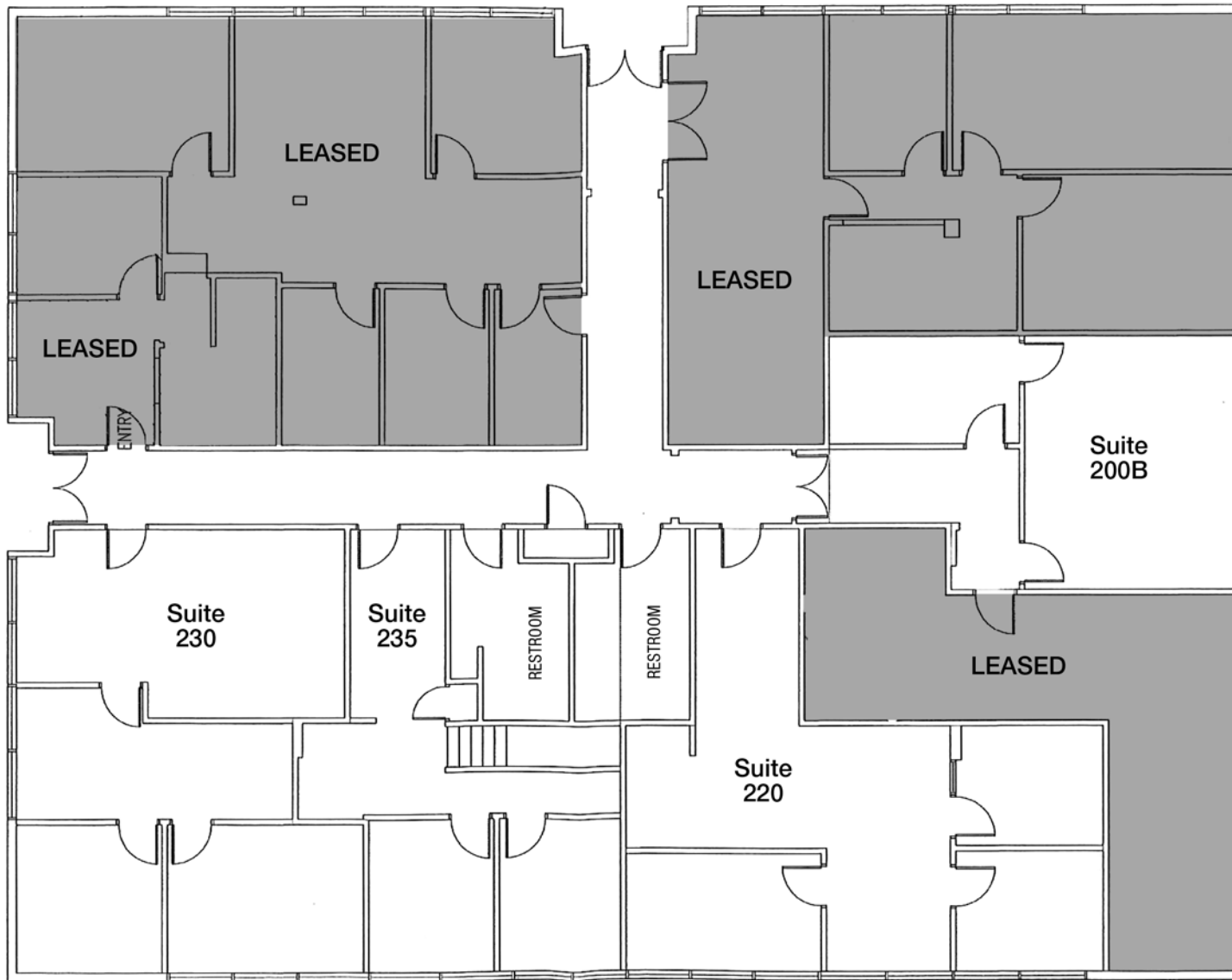
SUITE	RENTABLE SQ. FT.	RENT/MO.
Suite 200B	675 RSF	\$799 per Month*
Suite 220	1,165 RSF	\$1.35 per RSF
Suite 230	1,185 RSF	\$1.35 per RSF
Suite 235	925 RSF	\$1.35 per RSF
Suite 220/230/235	3,275 RSF	\$1.35 per RSF

\*Electricity included (Suite 200B)

## PROPERTY HIGHLIGHTS

- Professional Office Building
- Surface Parking
- Flexible Floor Plans
- Retail Amenities within Close Proximity
- Amazing Views of the Santa Monica Mountains
- Easy Access to Ventura Freeway (US 101)
- Monument Signage Available (2,000 square foot minimum)

FLOORPLAN



\*Not to scale



AMENITIES AERIAL



**SUBJECT**  
28035 Dorothy Drive  
Agoura Hills, CA

Do it center	WOOD RANCH BBD & GRILL	IHOP	FedEx	Jack in the box	ISLANDS Fine burgers & drinks	YAKITO	USA GASOLINE
Exotic Thai Cafe	the Canyon	BURGER KING	FARMERS	jiffy lube	AGOURA HILLS DANCE	ABBY'S MILLSTONE BAKING COMPANY	PLATA
REGENCY THEATRES	Adobe CREATIVE SERVICES	U-STORE-IT	ISABELLA'S	AGOURA HILLS	Studio Kids	Chevron	
MANDARIN LOTUS FINE CHINESE FUSION CUISINE	Hugo's RESTAURANT	YUMMY HOUSE	Carrara Pastries	BLUE TABLE	Nick Rail music	NUMERO UNO	ROADSIDE
		TIFA CHOCOLATE & GELATO					

For more information  
please contact:

**CORY RICHMOND**  
PRINCIPAL  
**818.444.4915**  
crichmond@lee-re.com  
License ID #01225466

**ERIC NISHIMOTO**  
ASSOCIATE  
**818.444.4984**  
enishimoto@lee-re.com  
License ID #01462339

**LEE & ASSOCIATES**  
COMMERCIAL REAL ESTATE SERVICES

Lee & Associates® - LA North/Ventura, Inc. • Corporate ID #01191898  
A Member of the Lee & Associates® Group of Companies • www.lee-associates.com  
1000 Town Center Dr., Suite 310, Oxnard, CA 93036 • P:805.626.1200 F:805.413.7000  
26050 Mureau Rd., Suite 101, Calabasas, CA 91302 • P:818.223.4388 F:818.591.1450

No warranty or representation is made to the accuracy of the foregoing information. Terms of sale or lease and availability are subject to change or withdrawal without notice.