



# ROUTESAVVY MULTI ROUTE ENHANCEMENTS USER GUIDE

## 1. Introduction

RouteSavvy route planning software is powerful, easy-to-use, web-based routing software designed for field services, pick-up, delivery, collections, transport companies, and individual professionals who travel to multiple locations in the course of their work days.

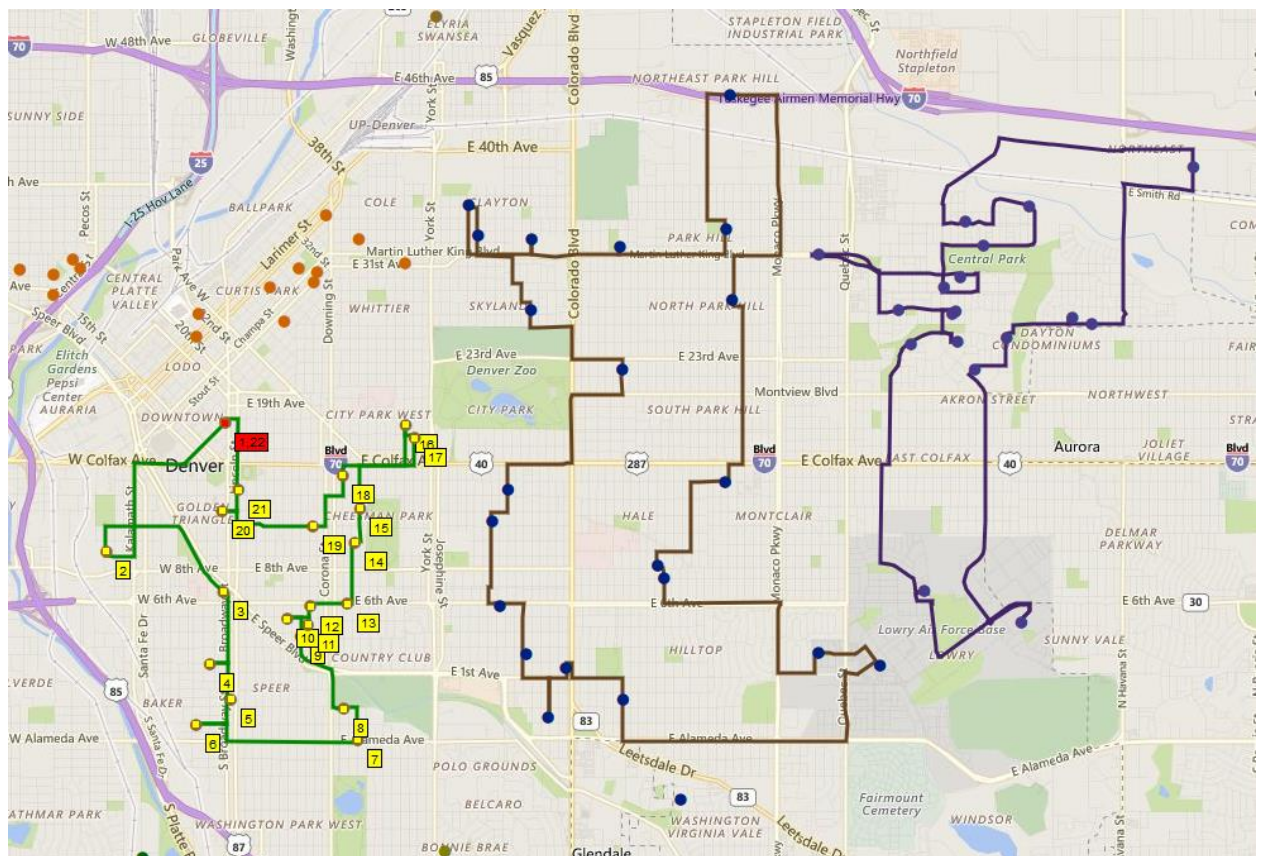
The new Multi-Route enhancements for RouteSavvy adds features that are useful for creating and comparing multiple routes. This Multi-Route enhancements user guide explains the additional functionality added with the Multi-Route updates.

The RouteSavvy Multi-Route Enhancements include 3 new features...

- 1) **Cluster into New Folders** – Allows large folders to be divided up into separate folders based on geographic proximity.
- 2) **Change Stop Order** – Allows a stop to be moved to a specific route position without using up/down arrows.
- 3) **Multiple Route Support** - Allows multiple routes to be visualized and manipulated.

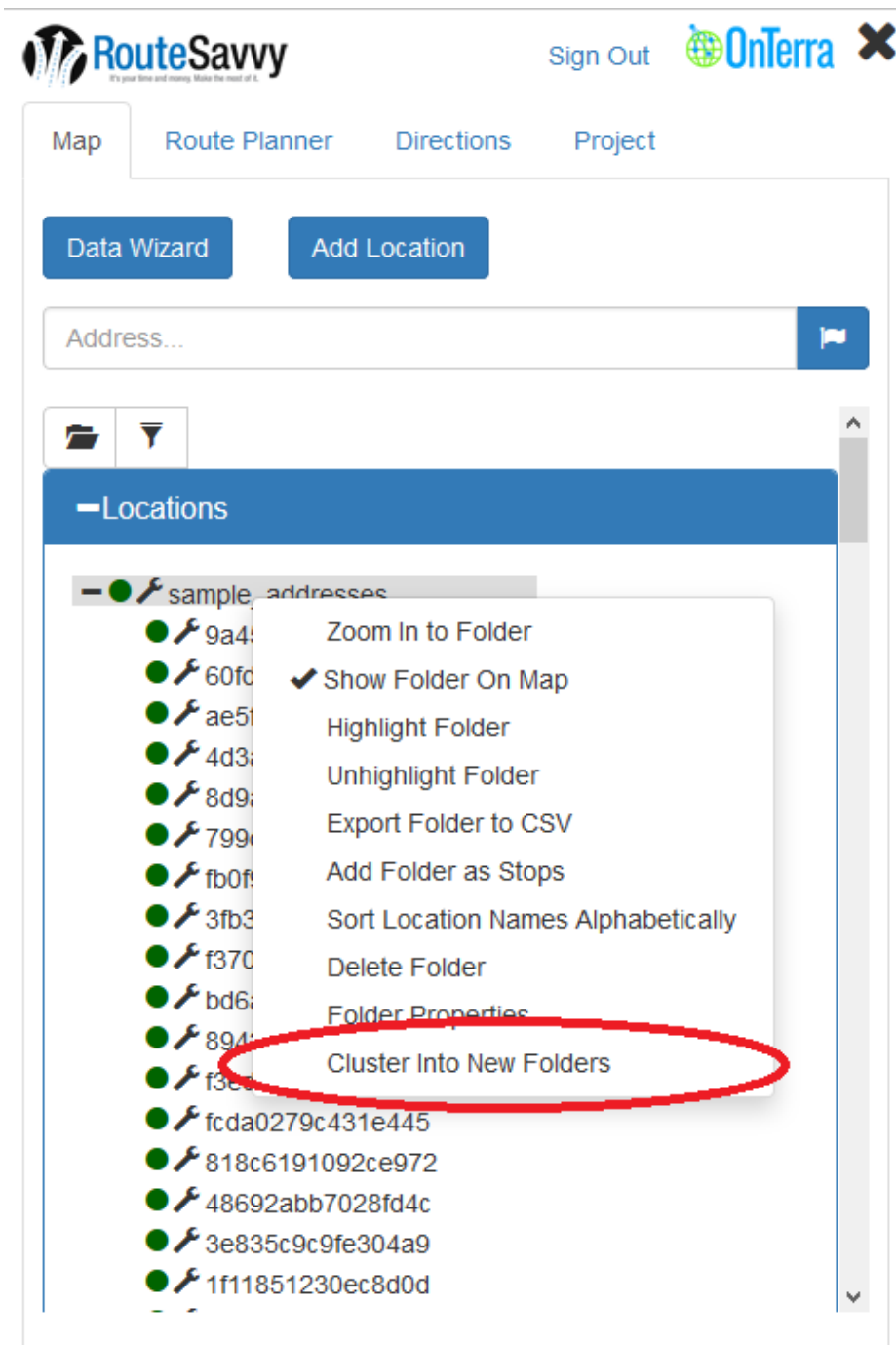
The existing [RouteSavvy User Guide](#) continues as the preferred user guide for other functions of RouteSavvy. And this guide assumes you know how to add stops to a route, optimize and/or get directions. Email [support@onterrasystems.com](mailto:support@onterrasystems.com) with any questions or to setup a live demo.

*Figure 1* – Shows multiple routes on the RouteSavvy map

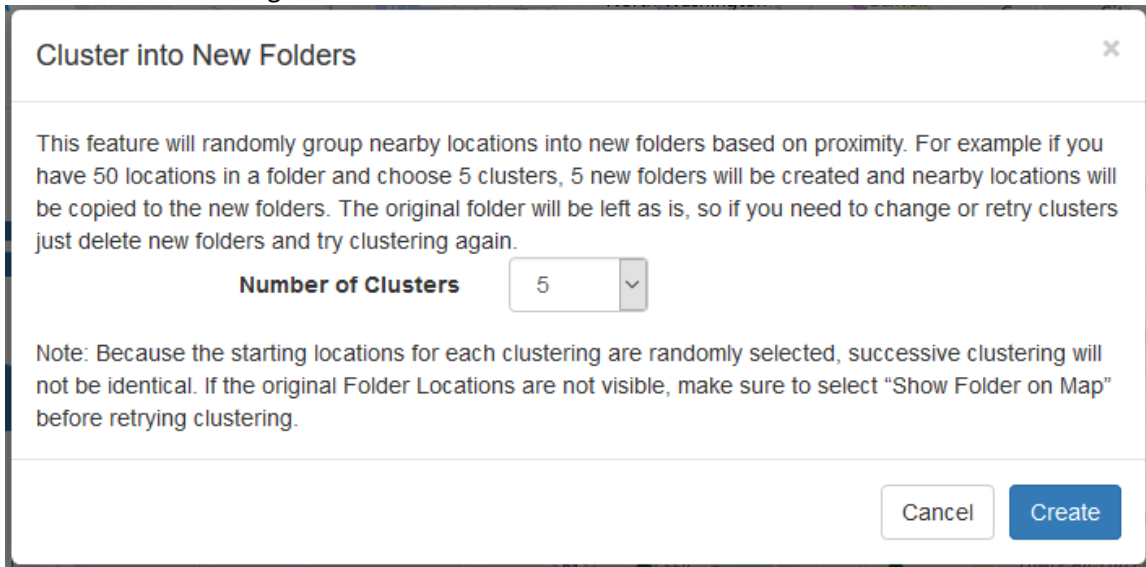


### 1.1 Cluster into New Folders

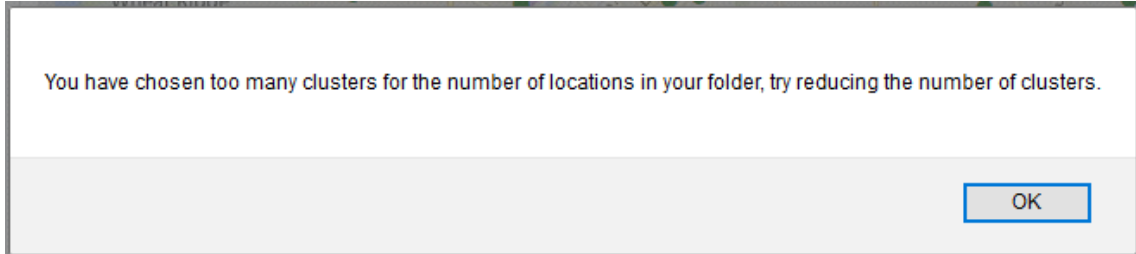
Often locations are imported using the Data Wizard as a single large folder. Folders can be managed using Location context menu selections and map drawing tools. It is sometimes useful to divide locations into smaller clusters based on location proximity i.e. for different territories or days of the week. The folder context menu (accessed by right clicking) a folder has a new selection, "Cluster into New Folders."



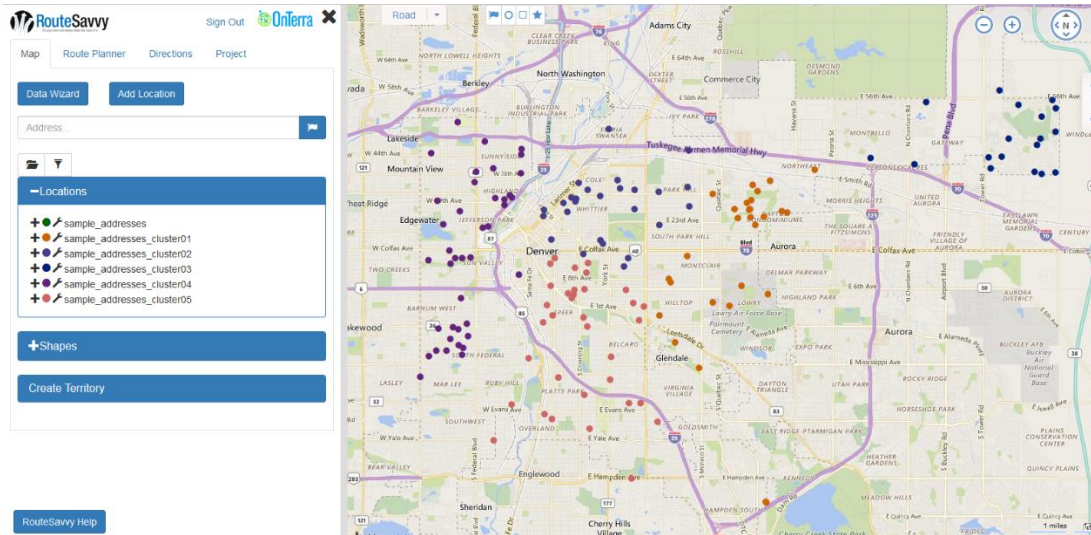
Selecting “Cluster into New Folders” opens a dialog window prompting for a desired number of new folders in the range 2 to 20.



Note that selecting a large number of clusters for a small number of locations may show a warning that there are not enough locations for the chosen number of clusters. “OK” will close the warning message without adding new folders. If this happens, just select a smaller number of clusters and try again.



After selecting the desired number of clusters, the “Create” button will read the existing locations from the folder and separate these locations into new folders. The original folder is kept for reference but its folder is closed and “Show Folder on Map” is unchecked.



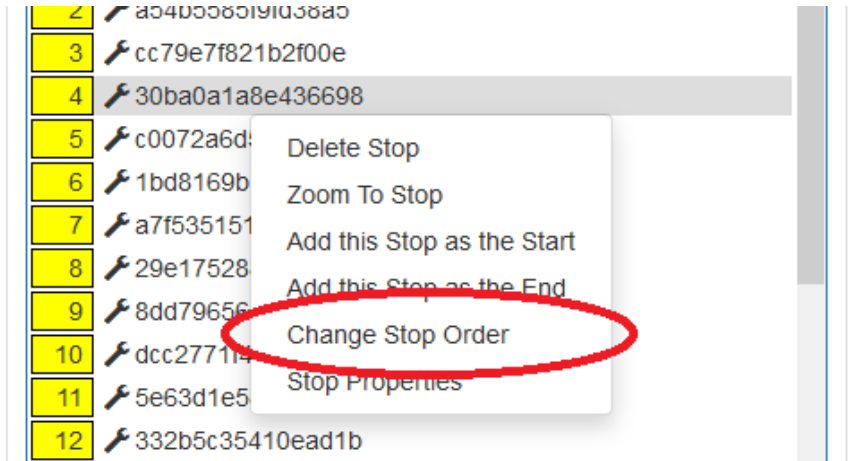
“Cluster into New Folders” will randomly group nearby locations into new folders based on proximity. For example, if you have 50 locations in a folder and choose 5 clusters, 5 new folders will be created and nearby locations will be copied to the new folders. The original folder will be left as is, so if you need to change or retry clusters just delete new folders and try clustering again.

## Notes

- 1) The clustering will not always divide stops evenly, in the example above there likely won't be 10 stops per folder as clustering is grouping locations closest together. You can retry clustering or move stops manually to other folders if needed.
- 2) Because the starting locations for each clustering are randomly selected, successive clustering will not be identical.
- 3) If the original Folder Locations are not visible, make sure to select “Show Folder on Map” before retrying clustering.

## 1.2 Change Stop Order

Allows you to move a stop to any position in a route. Right click on the stop and choose “Change Stop Order.” This opens a dialog window showing the current location and allows you to enter a numeric position for where you want to stop to move. The Save button will then move the stop to the new location order. After changing stop order, you will want to use the “Get Directions” command rather than lose the new order with the “Optimize” command.



### Change Stop Order

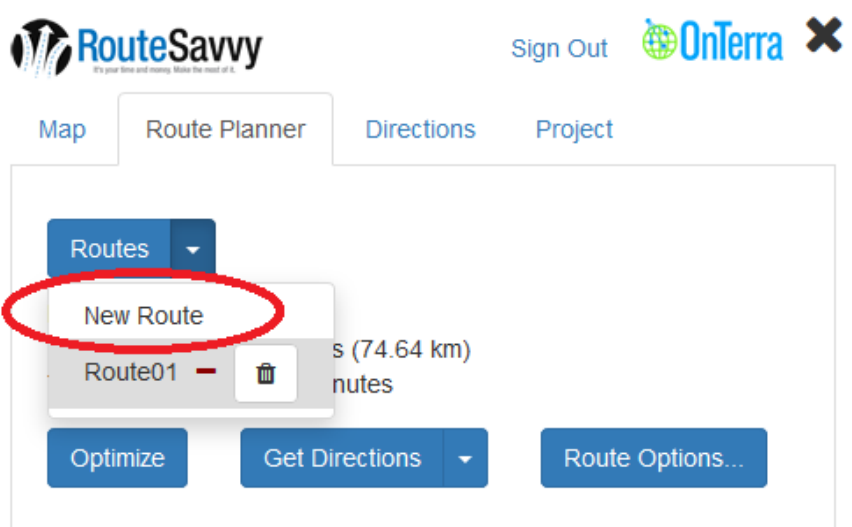
Enter a new stop order in the range from 2 to 30.  
After the new stop order has been saved please use "Get Directions" to refresh the route directions.

Stop Order:

### 1.3 Multiple Route

Allows you to display and manipulate multiple routes in RouteSavvy. To create additional routes select "New Route" from the "Routes" drop down list in the Route Planner tab. This option to create additional routes becomes available after you have created your first route like always and hit Optimize or Get Directions,.

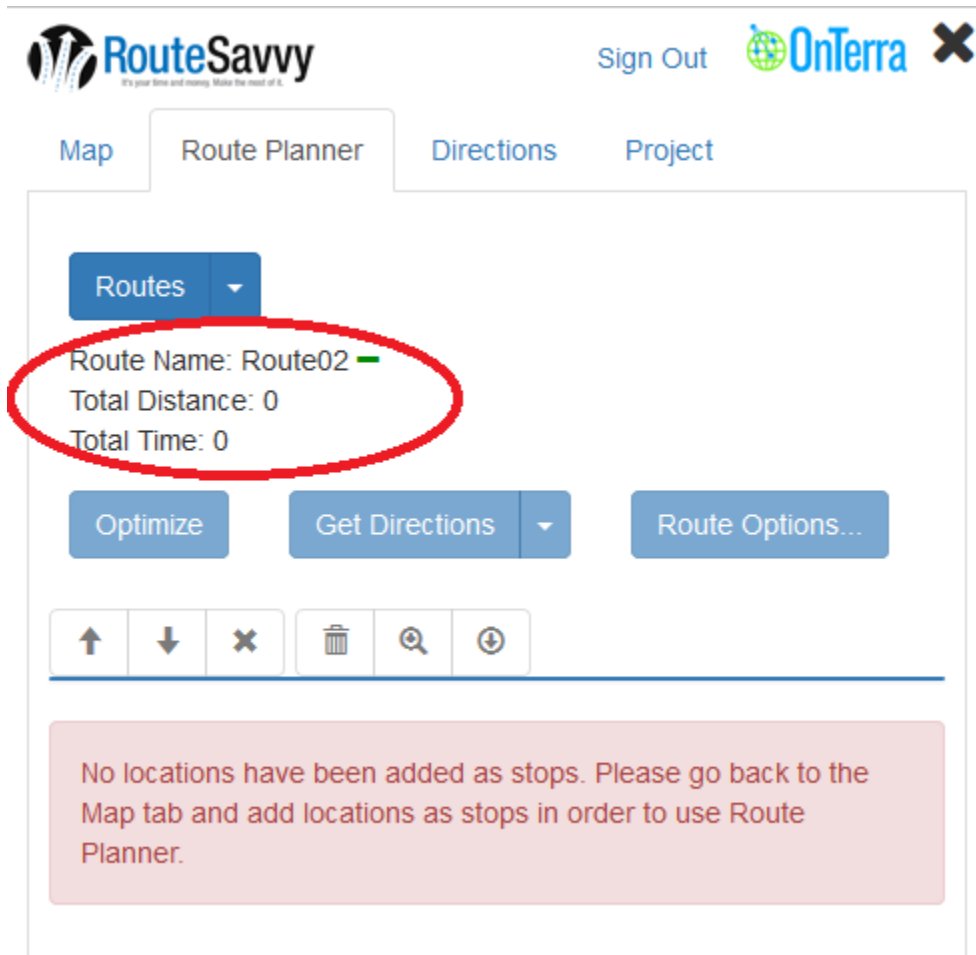




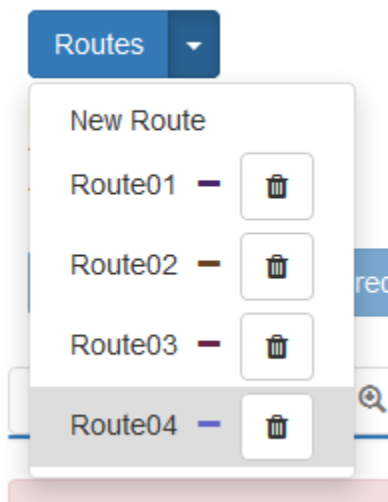
“New Route” will open a dialog prompting for a new route name or click Save to accept the auto generated name.



Once saved, a new route is created and is ready to add stops.

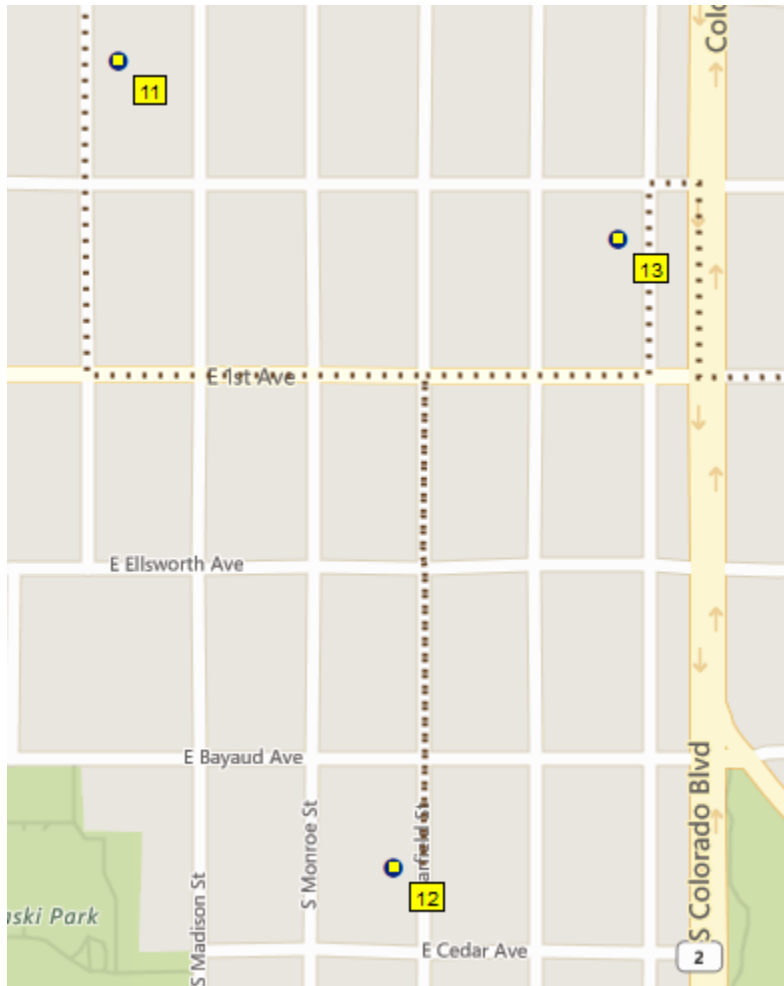


With two or more routes, you can switch to a different route by selecting a route in the drop down or by clicking on a route line on the map.

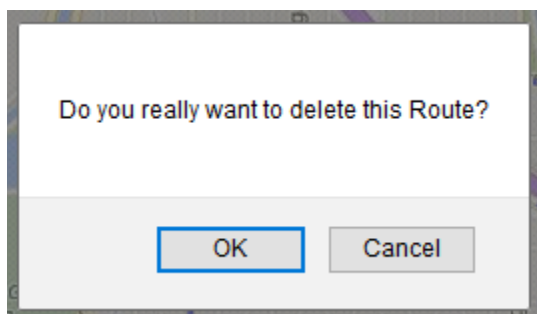




Changing a route by adding or deleting stops, changing stop order, or changing route options will mark the route as incomplete with a dashed line. This also removes the Directions until a new “Optimize” or “Get Directions” updates the changes.



Clicking on the trashcan icon of a route in the Routes dropdown will prompt for a verification and then delete the route with its directions and stops.



## RouteSavvy™ Multi-Route User Guide



If you have any questions, feel free to contact us at [support@onterrasystems.com](mailto:support@onterrasystems.com)