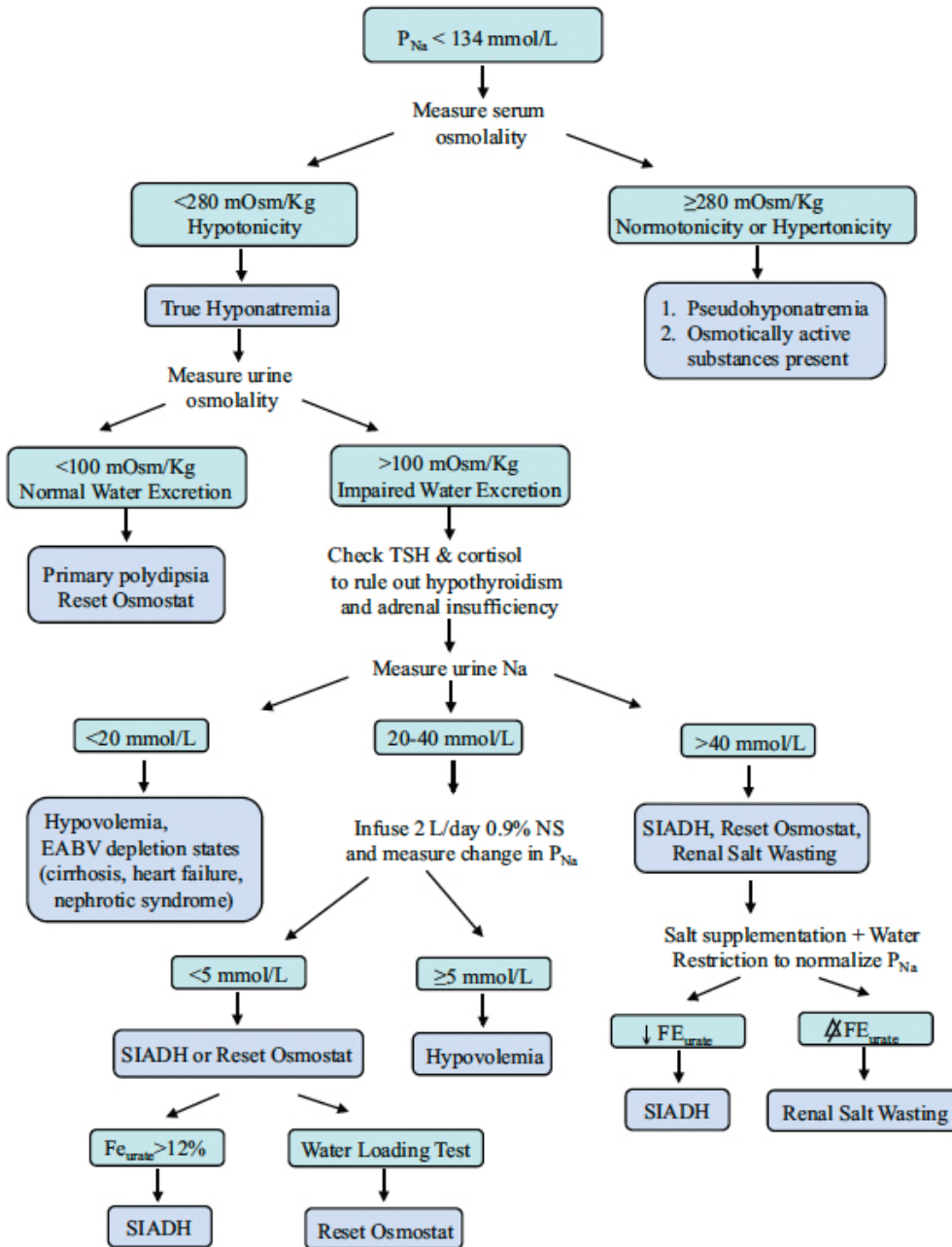


Figure 1. Algorithm for Diagnosing the Etiology of Hyponatremia



P_{Na}=plasma sodium; TSH=thyroid stimulating hormone; FE_{urate}=fractional excretion of urate; EABV=effective arterial blood volume; NS=normal saline; SIADH=syndrome of inappropriate antidiuretic hormone.

Source: Modified from Milionis HJ, Liamis GL, Elisaf MS. The hyponatremic patient: a systematic approach to laboratory diagnosis. CMAJ. 2002;166(8):1056-1062.