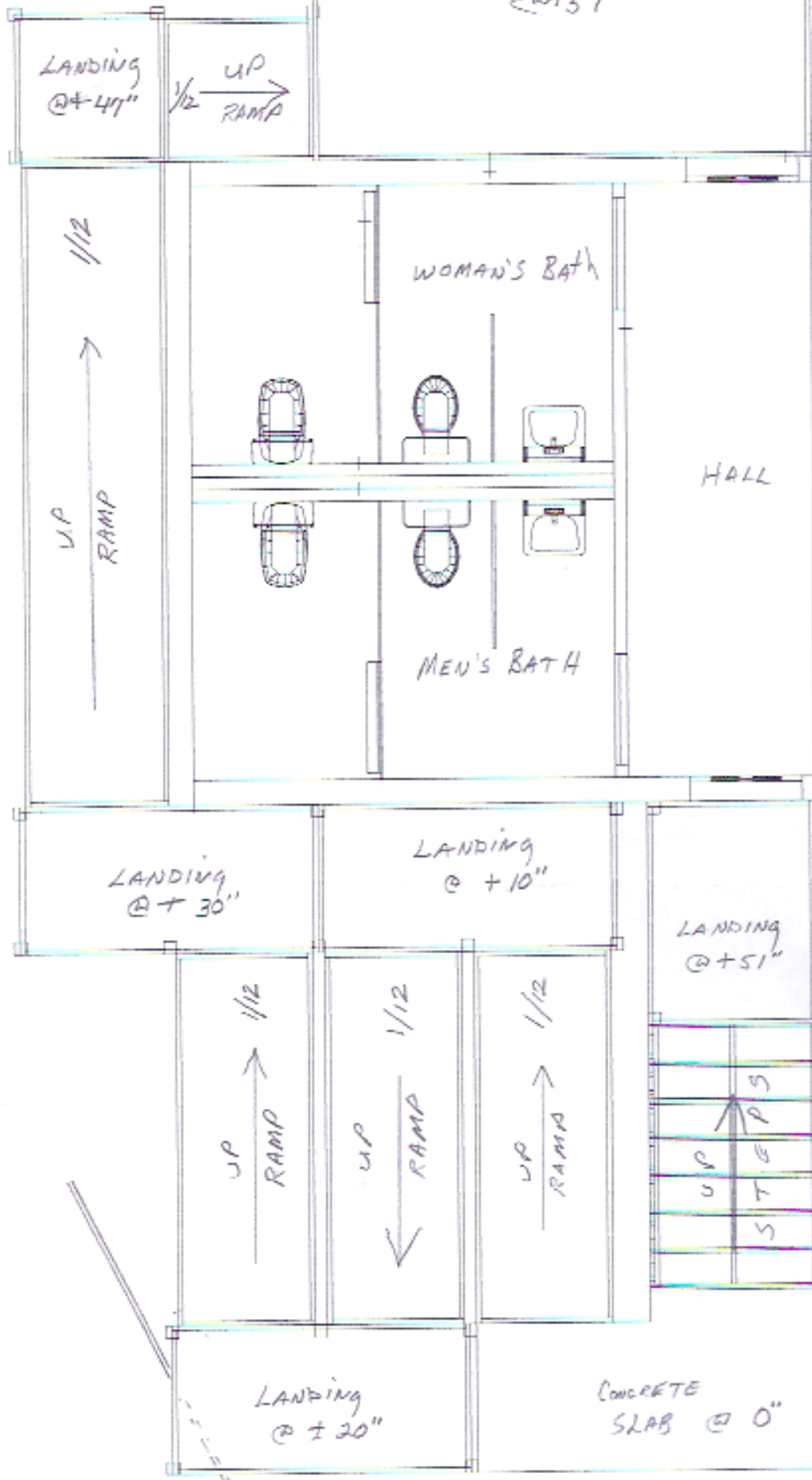


DECK/LANDING

@ +51"



LANDING @ +47"

1/12 UP RAMP

1/12 UP RAMP

WOMAN'S BATH

HALL

MEN'S BATH

LANDING @ +30"

LANDING @ +10"

LANDING @ +51"

1/12 UP RAMP

1/12 UP RAMP

1/12 UP RAMP

UP STEPS

LANDING @ +20"

CONCRETE SLAB @ 0"

"CHAPEL"

FEN