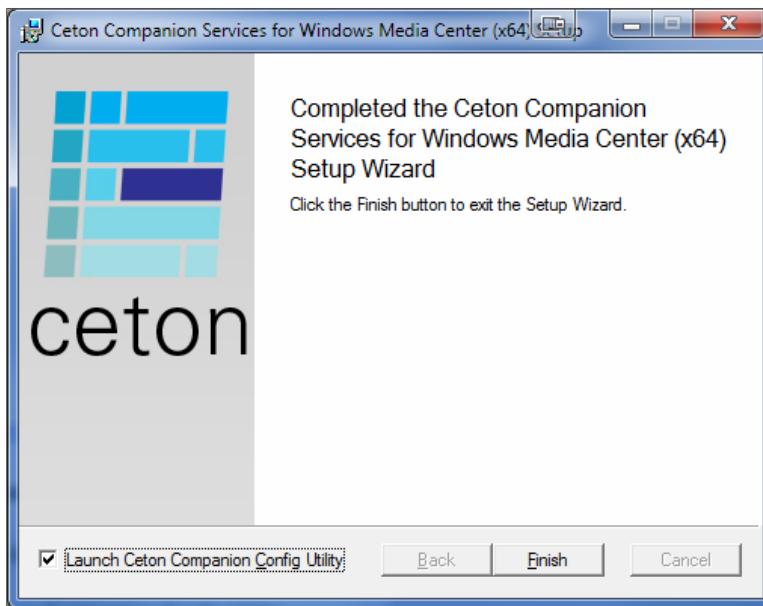


1. Installing the Software

- Download the **Ceton Companion Services** from the [Ceton Companion page](#). The installer works for both x86 and x64 systems.
- Double-click the downloaded file (the file name starts with [ceton_companion_services_setup](#)) and follow the simple on-screen directions to complete the installation.
 - If you are alerted that you do not have .Net 4.0 installed you can download it from Microsoft [here](#).
 - If you want to customize your media libraries, select Launch Ceton Companion Config Utility on the Finish screen and move to the **Configuring Your Media Libraries** section below.
 - You can also launch the Config Utility at a later date by selecting in Windows: [Start / All Programs / Ceton / Ceton Companion Config](#)

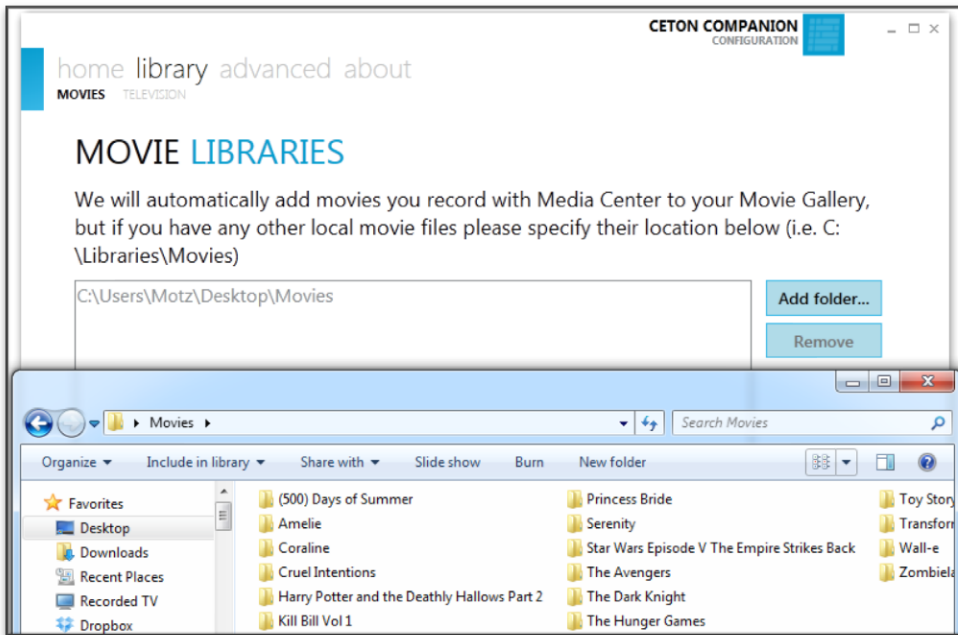


2. Configuring Your Media Libraries

While the Ceton Companion Services will automatically add all of your recorded television episodes and movies to your galleries inside of the Companion app, you might also have additional local files that you would like to be included as well. If this is the case then follow these steps:

- Launch the **Ceton Companion Config** (in Windows: Start / All Programs / Ceton / Ceton Companion Config)
- Select **Library**
- Select **Movies** or **Television**, depending on what type of files you are adding
- Select **Add folder**
- Select the base or parent folder where all of your Movies or Television files are located, such as in this example "C:\Users\Motz\Desktop\Movies".

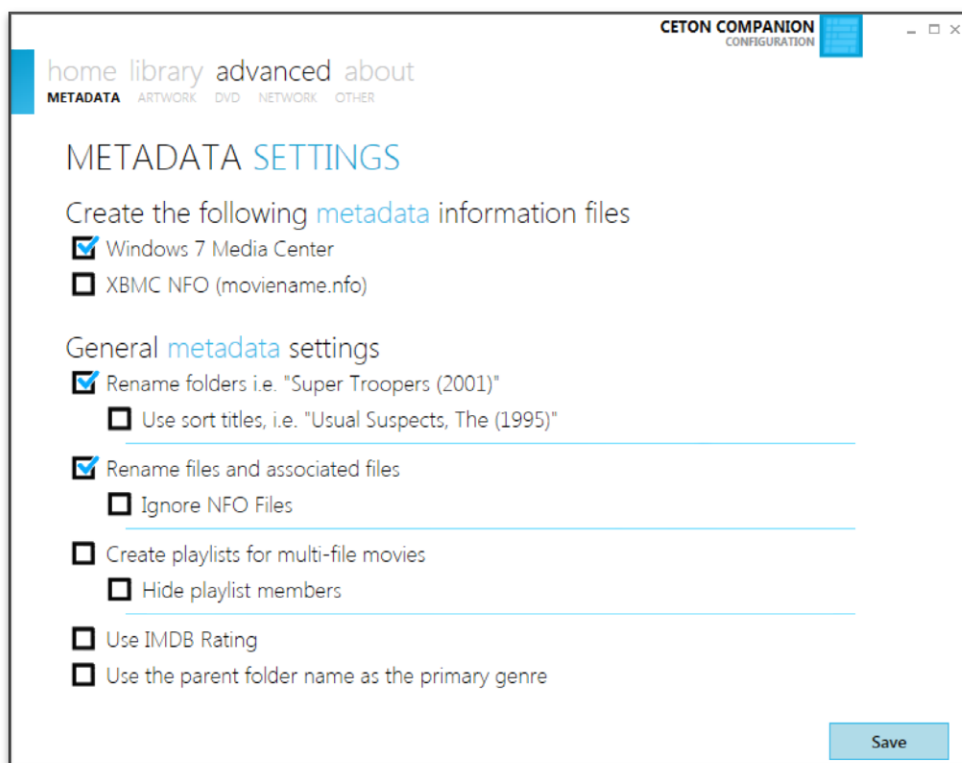
- Repeat the above steps as needed to add another library



For correct metadata (details and artwork) to be collected we require a specific structure where each movie is located in a subfolder under the parent folder, as you can see above. If any of your folders are located on a remote share (for example network attached storage or home server) you can specify the username and password to access these folders under **Advanced / Network** (see below).

3. Adjusting Metadata Settings

Metadata is added automatically for your local recordings, however if you added folders to your **Movie** or **Television** Libraries as explained above, you will want to enable metadata for them as well. We have default options which we believe are great for most users, but you are free to adjust and tweak your metadata settings to exactly how you like them in the **Advanced / Metadata** section:



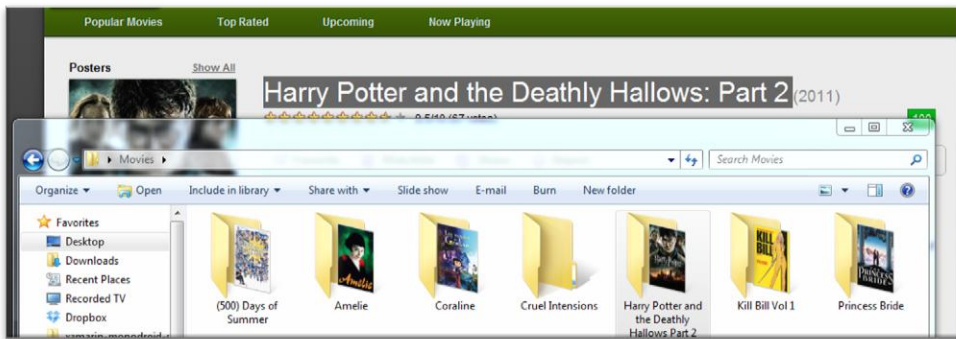
The most important option under metadata is to specify what type of metadata information files you would like to have created. [Windows 7 Media Center](#) is recommended because enabling it will automatically create metadata to be displayed inside the Windows Media Center Movie library on your PC and on your media center extenders. Additionally, if you use XBMC, you can select the [XBMC NFO](#) option as well.

Movie Metadata

Ceton Companion Services will attempt to locate metadata for a movie based on the name of the folder that you create inside of your Movie Library folders. There are complex algorithms in place to automatically detect the movie based on the file name you specify. However, there is a wide variety of naming structured used by people and this is not always 100% accurate.

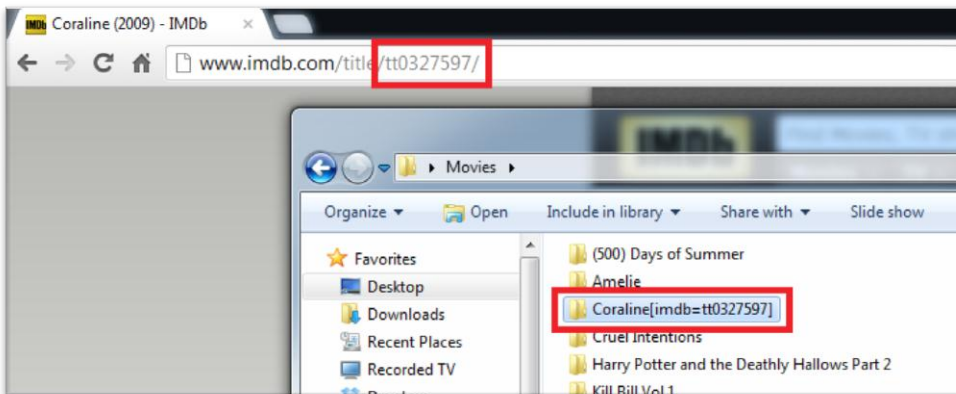
If Ceton Companion isn't correctly identifying metadata for the naming structure you have, we recommended naming your folders in the following way:

- Locate the movie on www.TheMovieDB.org, which is the source we use for metadata.
- Copy and paste the full name found on TheMovieDB as the folder name.
 - In the example below the movie is *Harry Potter and the Deathly Hallows: Part 2*. The colon (":") is not valid in a folder name and is automatically removed, yet Ceton Companion is still able to detect the correct movie.

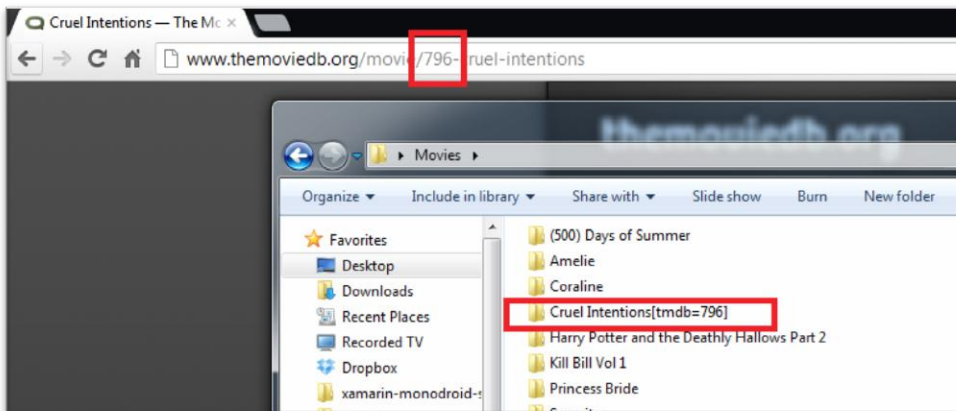


- If for some reason this still does not work, you can add a special tag to the end of the folder name
 - Append a tag with the IMDB, i.e. Movie Title [imdb=tt0892769]
 - Append a tag with the TMDB, i.e. Movie Title [tmdb=13550]

IMDb example:



The Movie DB example:



Television Metadata

Television Metadata is gathered in a similar way as movie metadata except that we use TheTVDB.com to gather the metadata. We recommend a folder structure such as:

- Television Folder
 - Series Name
 - Season 1
 - Episode 1.avi
 - Episode 2.m2ts
 - Etc.
 - Season 2
 - S02E01.avi
 - S02E02.m2ts
 - Series Name
 - Etc.

4. Network + Remote Access

Under **Advanced / Network**, you will find the ability to specify your username and password for remote shares in your media libraries. The Companion Services currently support one global username and password for shares.

Ceton Companion mobile apps communicate with your HTPC and Windows Media Center through the Ceton Companion Services that are running on your PC. The default port number that the Companion Services “listen” on is 5832, however you can change that if it conflicts with other services on your PC. When [Network Discovery](#) is enabled, you will be able to perform a Wi-Fi scan using Ceton Companion on your mobile device to automatically configure the correct settings to your PC running the Companion Services.

For remote access to your HTPC through the Companion Apps please read our [Ceton Companion Remote Access Guide](#).

CETON COMPANION CONFIGURATION

home library advanced about
 METADATA ARTWORK DVD **NETWORK** OTHER

NETWORK SETTINGS

Enter your [network](#) credentials below if use remote shares in your libraries:

username

password

Network discovery

Enable network discovery

Inside of the Ceton Companion mobile apps you will be able to perform a Wi-Fi scan to detect this PC. If for some reason it can not be detected, here are the internal and external IP settings.

internal ip [192.168.1.13](#) port number

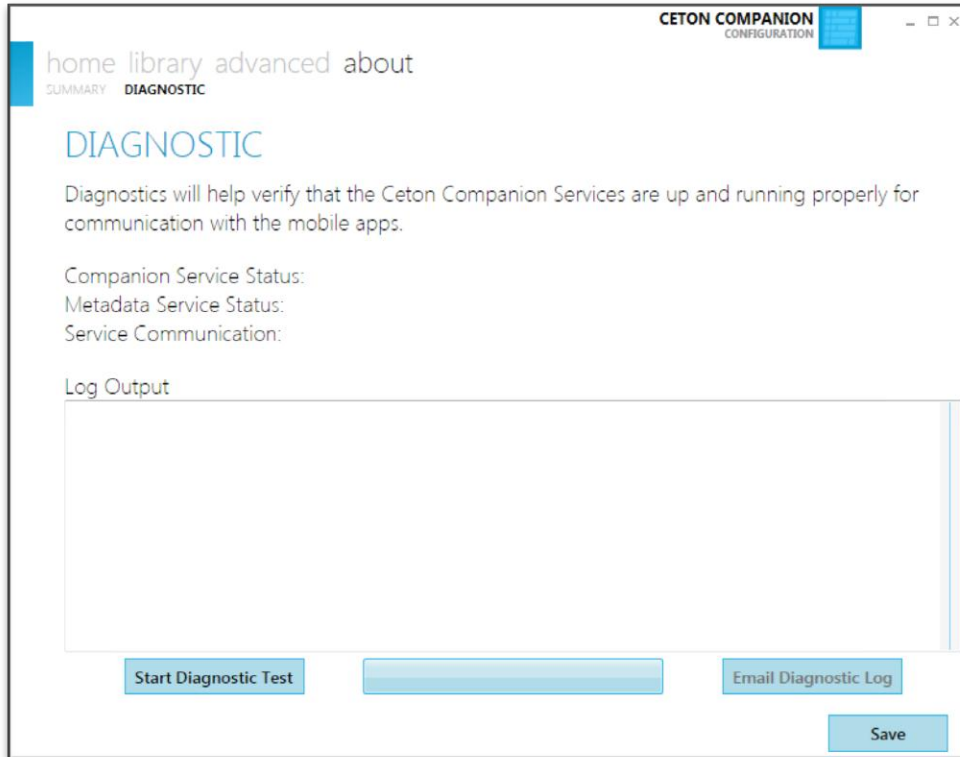
external ip [67.777.888.999](#) port number

[Test Port Forwarding](#)

[Save](#)

Support & Diagnostics

To test your configuration we offer a full Diagnostic tool under the **About tab**. Starting a diagnostics test will verify that the proper services on your computer are running and that full communication is available to the Companion Service. If any of the tests fail, simply follow the directions to fix the problem.



Official support for the Ceton Companion Service and Apps is available at [TheGreenButton.tv](https://www.thegreenbutton.tv) Ceton Product forums.