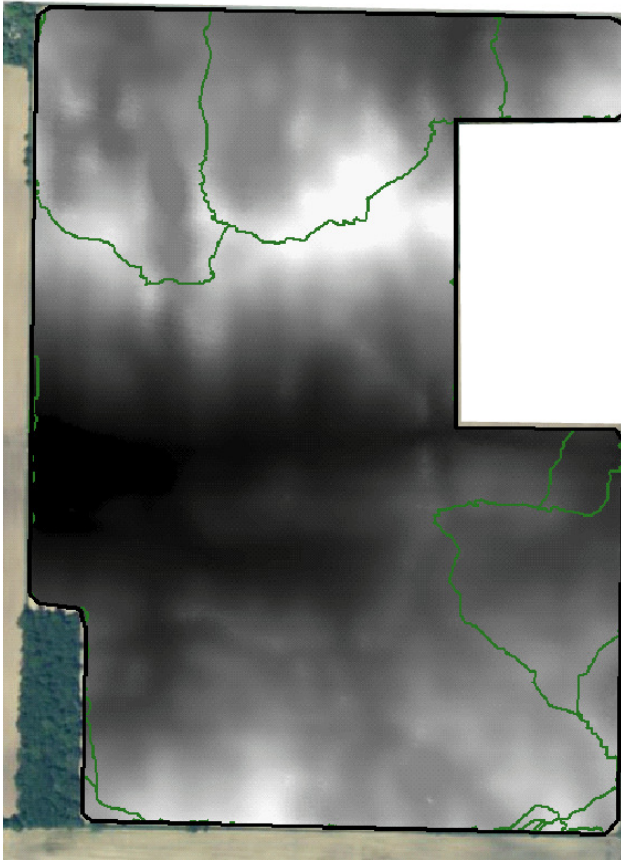


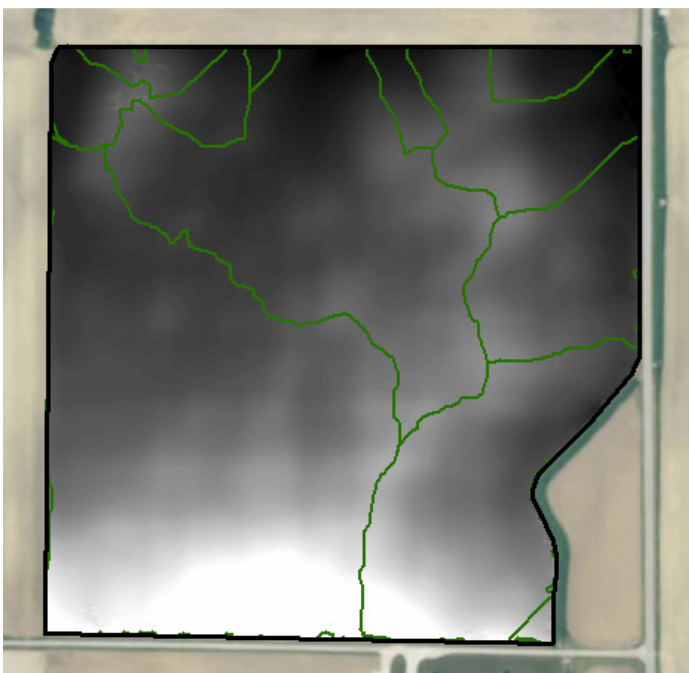


GIS Ag Maps  
www.gisagmaps.com

**Drainage basins based on LiDAR (with sinks being filled);  
basin boundaries (green lines) are essentially ridgelines**



Basins over elevation (darker to lighter shades are lower to higher elevation, respectively)



Basins over elevation (darker to lighter shades are lower to higher elevation, respectively)

