

Kia ora tatou.

This week certainly felt longer than just five days; this is a busy place.

At Tuesday night's Waverley Park Parents Association meeting, some really good questions popped up; the answers to which might be worth summarising here. Most of those answers are associated with roll growth issues..

Why can't we have a dedicated library?

Due to roll growth, we have had to press the library ('Room 12') into use as a classroom (as was the hall last year).

Why can't we build a new classroom then?

Quite simply, we're don't qualify for a new classroom because only students with an 'in-zone' address are included in the formula that generates how much teaching space a school is entitled to. The Ministry of Education's data shows that we have 100 out of zone students.(NOTE: *students with an in-zone address can enrol in their local school as of right*).

How did we get that many out of zone kids?

While we do have some out of zone students here for specific reasons and needs; in the main, this group is comprised of students whose families lived in-zone at the time of the enrolment of their first (and often, second) Waverley kid and then later shifted to an out of zone address. Obviously, we accept any subsequent siblings those families may enrol. We accept those out of zone enrolments quite simply because our school will not require families and whanau to separate those kids from their older siblings and to send them elsewhere.

When new address details are entered into our system; that information also gets updated on the national data-base - which then classifies all of the kids at that address as being out of zone. (NOTE: *there is no legal requirement for students to be removed from a school roll should their residential address change to one that is out of zone*).

Does that affect the number of teachers we have then?

Short answer: no. The total number of students in a school dictates how many teacher salaries a school is entitled to. (NOTE: *those salaries are paid directly by the government - all other staff in a school are paid for by the Board of Trustees. This could include extra teacher time*).

In general terms, a school like ours is entitled to one teacher for every 15 year one students; one teacher for every 23 years 2 & 3 students; and one teacher for every 29 years 4 - 6 students.

Class sizes invariably end up being bigger than the numbers indicated in the ratios because (a bit like the old chocolate ads): if you've got a class and a half at any level; you'll get a salary and a half to match. Obviously, you can't have a class

operating for just half the week, so the classes sizes have to be above the ratio levels in order to be able to have every student at school every day.

Schools are in a constant juggling routine to keep things consistent to make the staffing system actually work.

Mid-year interviews...

The afternoons of June 28 and 29 are your opportunity to have a conversation with your children and their teachers regarding the year's progress to date. While it is still quite a few weeks away, we do understand that booking time off work etc is easier done well in advance. **School will finish at 12.30 on both days.**

So: to book your time, just go and type in the code **cmmsq** at <https://www.schoolinterviews.co.nz/> where it says "Enter code." You then simply pick your teacher and time and the nice trolls who work the system will automatically send you an e-mail to confirm the details.

If you have any trouble, just contact the nice ladies who work in our office and they'll do it for you.

School Accounts...

Payment can be made direct into the school's bank account (12 3154 0103559 00); cash; or by eftpos now that we have that available. If you have any queries about your account, please contact the office.

Entertainment Book...

Today your child will come home with a flyer with information on the Entertainment Book.

We are hoping that people will get behind us with this fundraiser as the books are really great value for money and your book pays for itself after sometimes only using a couple of vouchers.

If you wish to make a purchase you can do so by logging into <https://www.entertainmentbook.co.nz/orderbooks/933v746>

Your support in this would be much appreciated.

Closing soon ...

Scholastic orders are closing on the 19 May. Orders and money to the office please or you can order online. www.scholastic.co.nz.

Tuinga Tahi Foodwrap Fundraiser closes on the 19 May. All orders and money to the office please.

<h2>How to</h2>	call us: 217 9332
	txt us: 022 3179332
	FB message us: http://goo.gl/ljlqac
	pay us online: 12 3154 0103559 00

Pita Pit...



The first week of subway went well with quite a few orders received.

This new MONDAYS ONLY lunch time option will see your child's lunch delivered here - all ordered and organised by you online from the comfort of your home, shed, palace - wherever you live! Just go to <http://www.subwayexpress.co.nz/School> and type Waverley Park into the search box and follow the prompts.

What else is happening?

June

- 05 Queen's Birthday
- 06 Phoenix Zone cross country at Bluff.
- 19 BOT meeting - 7.00pm
- 23 mid-year progress reports out
- 28 Mid-year progress conversations; 1.15 - 6.30pm
- 29 Mid-year progress conversations; 1.15 - 6.30pm

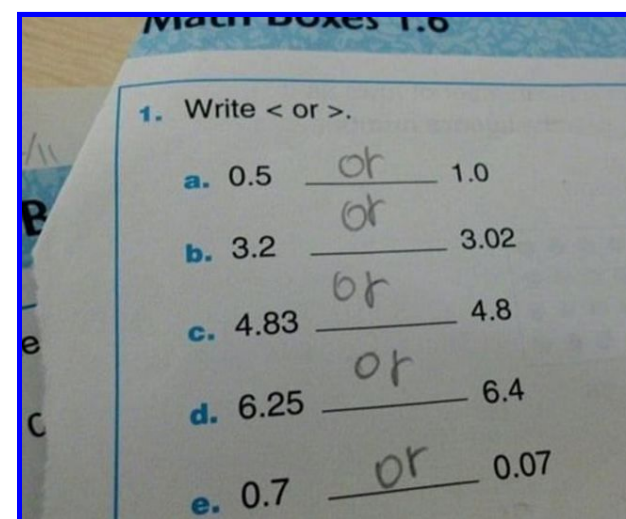
July

- 07 Term 2 ends
- 24 Term 3 begins

Fair enough...

His wife advised him strongly to buy "organic only" vegetables from the farmers' market. So he went and had a really good look around but - couldn't find any.

Finally, he grabbed an armful of vege and harassed a fairly tired looking employee with an abrupt, "These vegetables are for my wife. Have they been sprayed with any poisonous chemicals?" The guy looked him up and down and said slowly, "No, sir..... you'll have to do that yourself."



Until next week; haere ra.
Kerry Hawkins & staff.

ICC JUNIOR YOUTH

TUESDAYS DURING THE SCHOOL TERM
6.00-7.30PM @ 165 LEET ST
FOR STUDENTS IN YEARS 6-8



Contact: Lance 0272169450 or ICC Office 03 2144562

SPEND TIME WITH MUM ON MOTHER'S DAY

Try this fun take on eggs on toast, ideal for Mum's breakfast or brunch.

Egg in a nest

Ingredients:

- 4 slices wholegrain bread
- 1 Tbsp oil
- 4 eggs
- Freshly ground pepper

Method:

1. Cut a 4cm hole (use a biscuit cutter) in each slice of bread
2. Brush oil on one side of each slice of bread
3. Place the bread oil-side down in a frying pan on medium heat
4. Break an egg into the hole of each slice of bread
5. Once the egg starts to set, brush on a little oil and turn to cook on the other side
6. Sprinkle with pepper

Have fun outdoors

- Go for a walk together in a park, the beach or a bush walk
- Pack a surprise picnic and head outdoors even if it's just the back yard
- Challenge your Mum to hula hooping, skipping or family relay races
- Participate in a Jennian Homes Mother's Day fun run/walk see if there is an event near you: jennianmothersday.com

For more information, visit heartfoundation.org.nz

Are you looking for Childcare?

Vacancies available now!

Call Suzanne who can arrange for you to meet
an Educator with your child
Phone 214 7777

Hi, my name is Liz and I have been an educator for nine years with Busy Bodies childcare. I am a Mum of two high school aged children and I love being able to care and educate preschool children.

I LOVE being able to get outdoors and for the children to experience what the community has to offer in the way of learning.

The programme I offer varies from day to day, I like to get out in the community most days going to playgroup, bush buddies, chipmunks, drop in gym as well as outings to local parks. I also offer a transition to school programme specific to your child's needs.

**We look forward to welcoming
you into the Busy Bodies whanau!**

CALL US NOW TO MEET LIZ!

www.busybodies.co.nz 214 7777

Waverley Park School – proud to be supported by the



Just a reminder that Pita Pit is available every Friday. Orders can be made via www.lunchonline.co.nz

