

Kia ora tatou.

This week, various parts of the the world celebrated some pretty special days: Memorial Day, Spring Holiday, National Gorgeous Grandma's Day...but now comes our Queen's Birthday,

According to reliable sources (*good old Uncle Google*) the reason the monarch's birthday is always celebrated in June is basically down to the English weather:

"British monarchs did not want national celebrations and the attendant parades for their birthdays spoiled by freezing cold and lashing rain. So, starting with King Edward VII (who was born in November), the Sovereign's official birthday celebrations were moved to early (northern) summer."

June for us in New Zealand is the start of winter, but because there are few large-scale public functions held to celebrate the Queen's birthday, and because our winter ...is not as dreary as the British equivalent, the June timing has not been changed for southern hemisphere countries."

But: given that Queen Elizabeth II's actual birthdate is April 26; and this part of the planet marks ANZAC Day on April 25...wouldn't you think that somebody might have already thought of moving our Queen's Birthday to her *actual* birthdate? That way - the majority of people would always get at least a two day break and in the years where April 25 & 26 fall Monday -Tuesday: a four-day weekend! Just an idea...

Fa'afetai tele lava!

We had our first get together as the Waverley Pacifika Group - we have some great parents and people in our community helping with this. We have decided to run Wednesday practices from 3.15 until 4.15pm. This way children participating can have a break and something to eat before we start. We would prefer that all children are picked up from the hall by 4.15pm (not walking home as it is getting darker in the afternoons).

Thanks to all the parents who stayed to join in or watch us. Please feel welcome to do this. If there are any other families interested in finding out about our Pacifika group please come along next Wednesday or contact Brenda at brendadevery@waverleypark.school.nz (Room9).

Because enough is enough!

As of Tuesday 6 June; any 'fidget spinner' on the school's property will become the school's property - up until it is totally destroyed by the lucky staff member whose name gets drawn from a hat. This definitive reaction has been brought about by us reaching our collective tipping-point with frequent and multiple interruptions to learning caused by: off-task fidget spinner owners; fidget spinner losses; fidget spinner thefts; hunts for lost fidget spinners; disputes over 'found' fidget spinners; and the odd attempt at the on-selling of 'found' fidget spinners! Signed: "The Principal"
(Psst: and no correspondence will be entered into)

WPPA NEWS

Marlow Pies: Only two weeks left to get orders in! These are great freezer fillers and perfect for a warm school lunch. Please attach payment with the order securely (Sorry - no eftpos)

Canteen: Closed Wednesday 7 June With the cross-country date set for Tuesday 6th, Wednesday 7th becomes a likely postponement date. Good luck to all our runners on Tuesday! Fingers crossed for good weather.

Uniform Sale: Wednesday 28th and Thursday 29th June, Second hand uniforms will be for sale in the staffroom for the duration of the mid-year progress conversations. Prices vary based on condition of clothing (Cash Only)

Combo Deal: Don't forget the Combo Deal!! Information is below.

Next Meeting: Tuesday 27th June - staffroom @ 7.00pm
- Carley Johnstone (President)

AMERICAN HOTDOG COMBO DAY

FRIDAY JUNE 16TH

Orders (with money - no eftpos) can be placed at the office

- or in the cash box located in the office - by Friday 9 June. Late orders cannot be accepted.

AMERICAN HOTDOG TOMATO OR BBQ
COOKIE
PLAIN WATER
\$5.00



A reminder that MONDAYS ONLY lunch time option will see your child's lunch delivered here. Just go to <http://www.subwayexpress.co.nz/School> and type Waverley Park into the search box and follow the prompts.

No canteen next week...

Due to the zone cross-country next week etc etc and to avoid confusion blah blah blah - no canteen next week.

Waverley Park School –
proud to be supported by the

ILT FOUNDATION

Cross-country - Tuesday 6 June...

Thank you so much to all the parents that have put their name down to help- A note and map has been sent home to some of you who have been given a designated spot on the running course. ALL other helpers please help where needed on day and at the finish lines. The venue is Slaney Street Park on the corner of Slaney and McDougall Streets. Buses will be parked on McDougall Street.

As we are to be in Bluff at 1.00pm, we will be having an early lunch at school so we are leaving for Bluff at 12.00 noon - **if you are coming with us on the bus, please be at school by 12.00.** Thanks to the generous support of the Waverley Park Parents Association, there is no cost at to families. Please ensure that your children have suitable footwear as shoes must be worn. Also ensure children have warm clothing, a drink bottle and a change of dry footwear in a bag to change into after the race. Seniors WILL get dirty and wet.

Mid-year interviews...

Congratulations - 104 kids have interviews booked already! To book your time for June 28 or 29:, type in the code **cmmsq** at <https://www.schoolinterviews.co.nz/> where it says "Enter code." **Please note: School will finish at 12.30 on both days.**

What else is happening?

June

05 Queen's Birthday - school closed
06 Phoenix Zone cross country at Bluff
14 Marlow pie orders close
16 Canteen 'combo' day
19 BOT meeting - 7.00pm
23 Mid-year progress reports out
27 WPPA - 7.00pm
28 Mid-year progress conversations; 1.15 - 6.30pm
29 Mid-year progress conversations; 1.15 - 6.30pm

July

07 Term 2 ends, 3pm
24 Term 3 begins

How to

call us: 217 9332
txt us: 022 3179332
FB message us: <http://goo.gl/ljlqac>
pay us online: 12 3154 0103559 00

Entertainment Book...

Thanks for your support so far you can still order at the office or <https://www.entertainmentbook.co.nz/orderbooks/933v746>



Fraturdays only - order online: www.lunchonline.co.nz

Both self-explanatory...

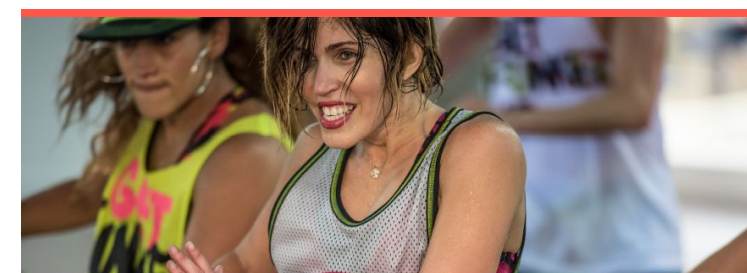
At any given time, the urge to sing "The lion sleeps tonight" is just a whim away a whim away, a whim away, a whim away.



He'd reached school age and, with a blast of propaganda, his mum managed to make him enthusiastic about the idea: she bought new uniforms, told him about new friends he'd make, and so on. Then the first day came, and off he went - quite eagerly, in fact. Then exciting his mother, that night, he gave a glowing report about his day at school.

The next morning, when she lovingly woke him up, he asked, "What for?" Smiling, she told him it was time to get ready for school. "What?" He was incredulous: "Again?!"

Until next week; haere ra.
Kerry Hawkins & staff.



KIDS AND ADULT ZUMBA CLASSES

KIDS and ADULT ZUMBA CLASSES: Zumba is a fun and effective way to keep fit and active this winter for all ages. Michal is now taking special kids class on Tuesday afternoons at 4:00 pm at La Muse.

These classes are for all fitness abilities and are suitable for ages 6 upwards. The music and moves are easy to follow and no dance experience is required. Contact Michal on 027 231 5217 or on Facebook search for "Zumba with Michal" for information on both her Tuesday kids classes and her Monday and Friday morning and Wednesday evening adults classes.

