

# Nordic Tug 49

*Inshore Exploring. Offshore Cruising*





Commanding 360° views, port/starboard deck access, ample room for electronics and an adjustable helm chair will make the pilothouse a favorite among skippers. A settee for 6 that makes into a double berth, stairways up to the boat deck and down to the staterooms, and hand-rubbed wood finishes will make it a favorite among crew and guests.

The pioneer of the pleasure-tug industry, Nordic Tugs® has offered the discerning cruiser high-quality yachts for more than a quarter century. Hand crafted in the USA, Nordic Tugs undergo extensive quality assurance checks and every boat is taken through an extended sea trial to ensure a quality finished product is delivered to each customer. Every Nordic Tug is backed by our exclusive Gold Standard Warranty - which provides 1-year stem-to-stern coverage and warrants the hull for 10 years against both structural failure and osmotic blistering. Distinctive styling, quality construction and legendary sea-keeping abilities have made Nordic Tugs a modern cruising classic.



# THE NORDIC TUG 49 FEATURES



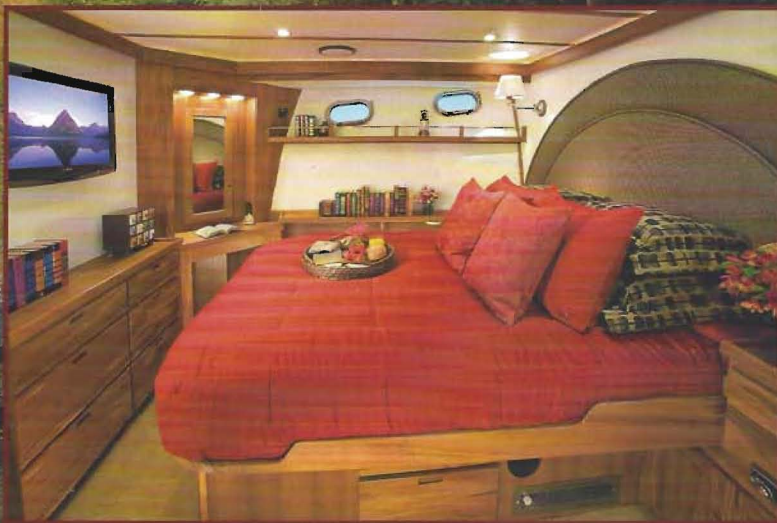
The salon has 6'5" (2.0m) of headroom and panoramic views through large Diamond Sea Glaze windows and the aft entry door. The pop-up 26" (66cm) HDTV can be enjoyed from the starboard settee and adjoining chair. The salon and galley are always the center of activity for entertaining and relaxing.



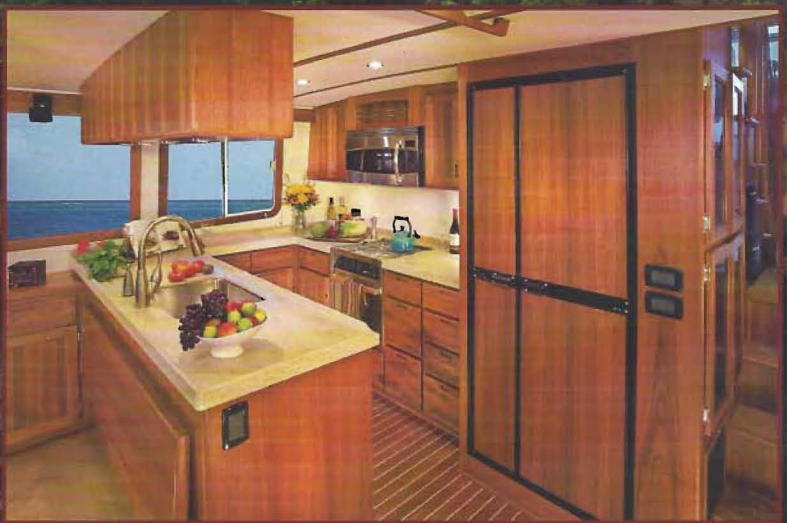
Forward guest cabin has a full berth with storage under, sapele finishes, reading lights, direct access to the guest head and a hanging locker with washer/dryer.



Master head has a molded shower stall with seat, acrylic enclosure and door, illuminated vanity, Corian® counter, stainless steel basin, Tecma® toilet, and sapele and holly flooring.



The midship, full-beam master cabin is a welcome retreat at the end of the day. It has a queen-size berth with storage under, a corner vanity with mirror, private head, hanging locker with automatic lighting, and a built-in stereo system.



The open design of the galley makes it easy to enjoy the views, share conversations and help with meal prep. A large refrigerator/freezer, 4 burner stove/oven and overhead microwave give great chefs great choices. The Corian countertops, an under-counter dishwasher and a double sink make cleanup simple.

# Nordic Tug 49



Available with flybridge (not shown)

- a Bow thruster provides higher level of maneuverability when docking in strong currents or windy conditions.
- b Flared hull pushes water out and away for a dry ride.
- c Molded mid guard increases hull rigidity and offers added side protection.
- d Full length, above-water hard chine makes the ride dryer in rough waters.
- e Diminishing underwater hard chine keeps the boat quiet and stable while at anchor.
- f Full keel improves tracking, while also reducing drift and roll.
- g Tunnel hull reduces shaft angle and allows a larger propeller for better efficiency.
- h Stern thruster helps correct prop walk when backing and fights wind drift.
- i Heavy-duty stainless steel shoe protects the propeller and rudder.

## Specifications

- j Improved aft running surface decreases drag, increases speed and reduces fuel consumption.
- k Extended hull/boarding platform allows easy transom access.

|                          |           |           |
|--------------------------|-----------|-----------|
| LOA (MAX).....           | 52' 8"    | 16.1 m    |
| LWL .....                | 48' 4"    | 14.7 m    |
| Beam .....               | 16' 1"    | 4.9 m     |
| Draft .....              | 4' 2"     | 1.27 m    |
| Bridge Clearance * ..... | 20' 11"   | 6.4 m     |
| Freeboard# .....         | 5' 6"     | 1.7 m     |
| Weight Dry .....         | 45,000 lb | 20,455 kg |
| Standard Power .....     | 610 hp    | 455 kw    |

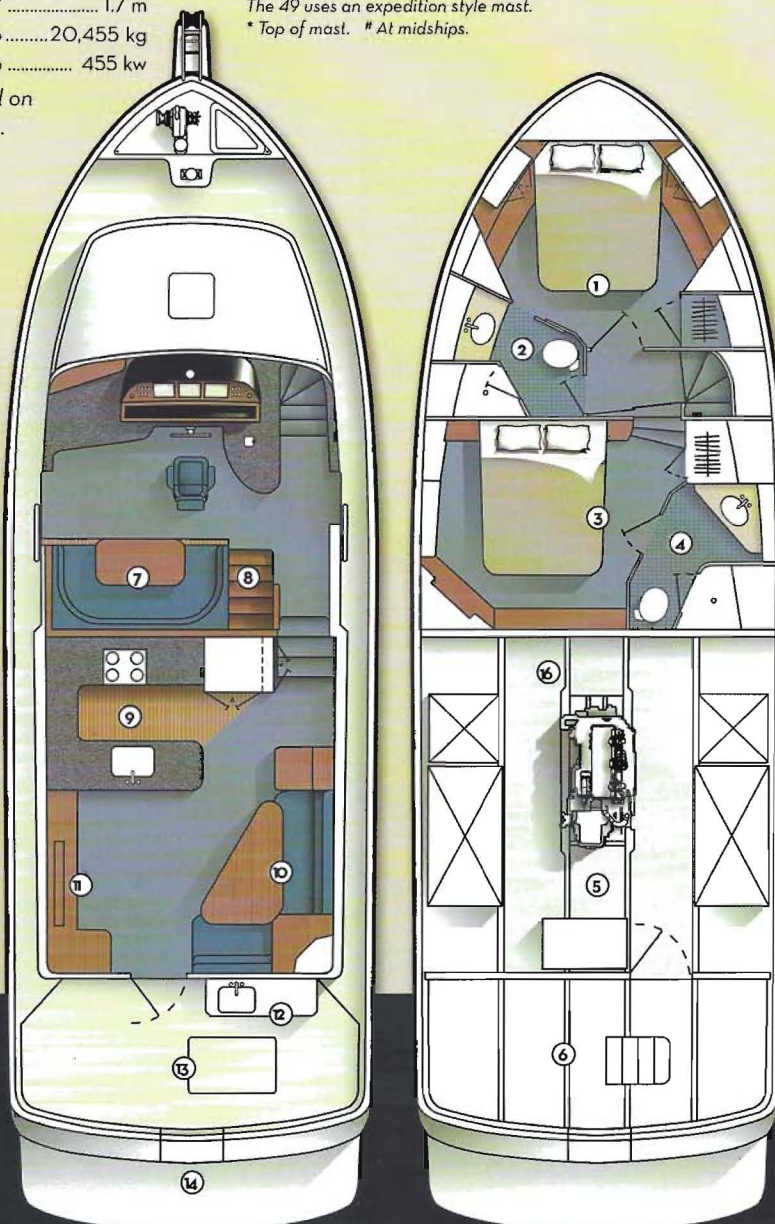
|                        |         |        |
|------------------------|---------|--------|
| Head Room PH C.L. .... | 6' 8"   | 2.03 m |
| Fuel .....             | 800 gal | 3028 l |
| Fresh Water .....      | 300 gal | 1136 l |
| Black Water .....      | 60 gal  | 227 l  |
| Grey Water .....       | 60 gal  | 227 l  |

The 49 uses an expedition style mast.  
\* Top of mast. # At midships.

- 1 Guest cabin w/full berth plus (combo) washer/dryer in hanging locker.
- 2 Head with stall shower, Corian® counter and Tecma® toilet.
- 3 Midship, full-beam master cabin w/queen berth and built-in stereo.
- 4 Private head has molded shower stall w/acrylic enclosure and Tecma® electric flush toilet.
- 5 Spacious engine room has auto fire extinguishing system.
- 6 Large lazarette, fully gel coated, lighted and ventilated.
- 7 Settee with sapele table has seating for six; converts to a berth.
- 8 Stairs to boat deck and optional flybridge.
- 9 Galley has stove/oven, refrigerator/freezer, microwave, dishwasher, Corian counters, double sink, sapele and holly floor.
- 10 Settee with sapele table seats five and has corner table w/storage.
- 11 Retractable 26" (66cm) HD flat panel TV with Bose® surround system.
- 12 Deck locker with double doors and utility sink.
- 13 Engine room access from salon and lazarette.
- 14 Full-width boarding platform with centerline transom door.

**Inset Colors**

- Flag Blue
- Storm Grey
- Nordic Red
- Forest Green
- Oyster White
- Brick Red
- Nordic Blue
- Nordic Black



The Nordic Tug 49's semi-displacement hull has the comfort, speed, fuel efficiency and quiet ride all Nordic Tugs are known for - yet draws only 4'2" (1.3m). It's the ideal "go anywhere" boat with the versatility to cruise shallow inshore waters or handle blue water passages.

Find us on Facebook

