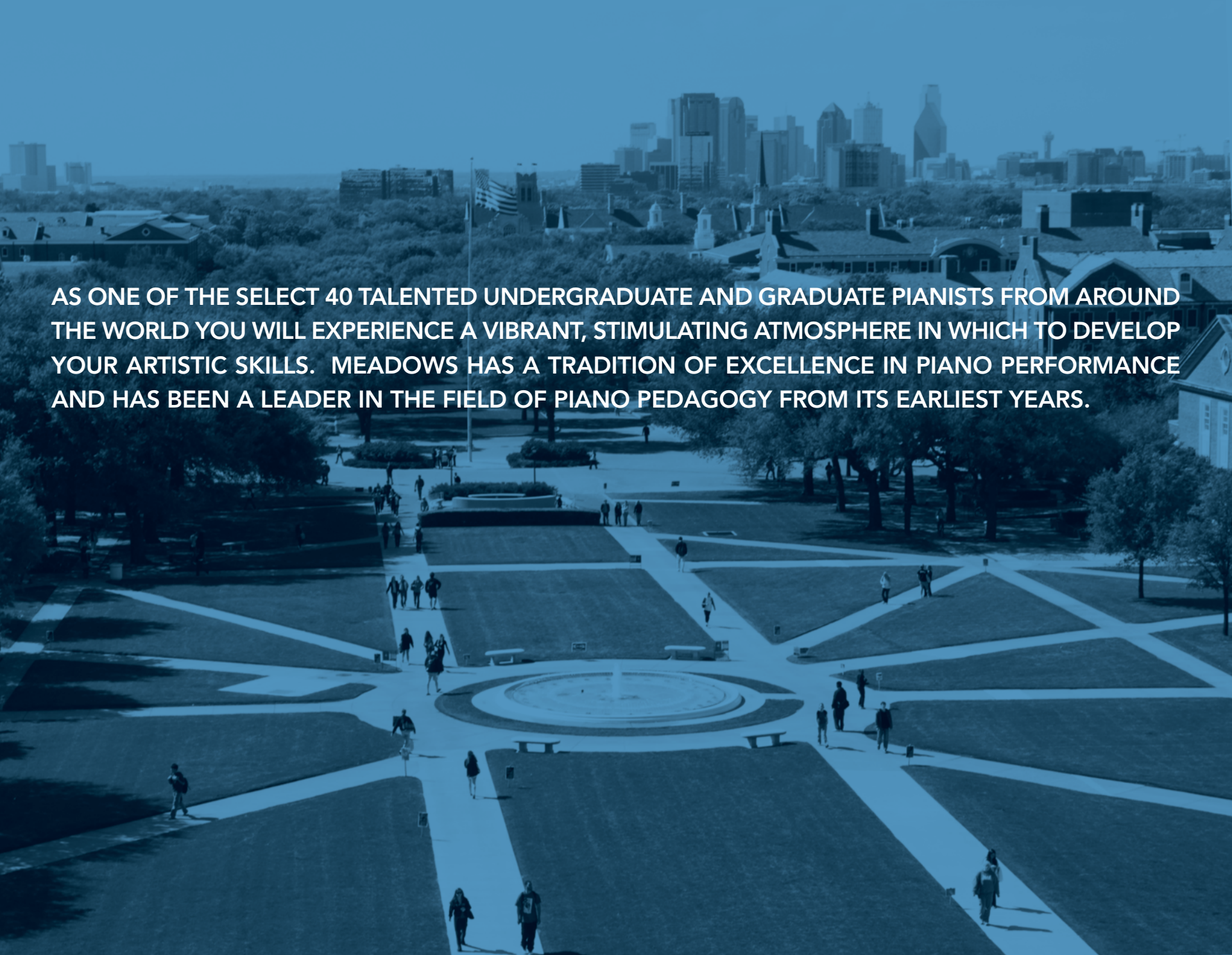




PIANO PERFORMANCE

SMU MEADOWS SCHOOL OF THE ARTS



An aerial photograph of a large university campus, likely the University of Chicago, showing a wide, star-shaped path system intersecting a large green lawn. In the background, a dense urban skyline is visible under a clear sky. The entire image is overlaid with a semi-transparent blue filter. The text is centered in the upper half of the image.

AS ONE OF THE SELECT 40 TALENTED UNDERGRADUATE AND GRADUATE PIANISTS FROM AROUND THE WORLD YOU WILL EXPERIENCE A VIBRANT, STIMULATING ATMOSPHERE IN WHICH TO DEVELOP YOUR ARTISTIC SKILLS. MEADOWS HAS A TRADITION OF EXCELLENCE IN PIANO PERFORMANCE AND HAS BEEN A LEADER IN THE FIELD OF PIANO PEDAGOGY FROM ITS EARLIEST YEARS.

WHY MEADOWS?

Our renowned international faculty is committed to preparing you for a professional career in performance, pedagogy, accompanying, chamber music, music education, composition, or music therapy. Our students consistently excel as winners in international and national competitions and are regularly accepted into the world's finest graduate institutions and summer music festivals. As a piano major, you may take advantage of our exciting semester abroad music programs such as SMU in Paris and SMU in Weimar.

Because of our strong faculty, a rigorous musical education, plentiful performance opportunities, and the state-of-the-art facility of the SMU Meadows School of the Arts, you will have abundant opportunities and the personal attention needed to develop your gifts. In 2004, the SMU piano department received a substantial gift from Dallas patron Jeanne Johnson for the purchase and maintenance of pianos, ensuring that our piano majors practice on the finest grand pianos. For the student pianist with smaller hands, SMU is one of only four universities in the nation that offers the opportunity to study, perform, and teach on reduced-sized keyboards fitted into Steinway pianos.

At SMU, you will encounter a rich musical experience on a beautiful campus within close proximity to the superb Dallas Performing Arts District. The world-class Dallas Symphony Orchestra, Dallas Opera, Dallas Chamber Music Society, Chamber Music International, the Van Cliburn International Piano Competition and other arts organizations all interact with SMU's Meadows School of the Arts to create a vital cultural life for you. Our 300 music students form a close-knit community for you to engage with, learn from, and enjoy university life.

The Meadows Commitment

The faculty of the Meadows School of the Arts is committed to the highest standards of teaching and to active professional participation in music performance and research. The Piano Performance and Piano Performance & Pedagogy degrees benefit from the broad experience of the Division of Music faculty, the excellent resources that abound in our laboratories, the Hamon Arts Library, and our visiting artists and faculty.

UNDERGRADUATE STUDIES

Degrees Offered

Bachelor of Music in Piano Performance

Bachelor of Music in Piano Performance,
with emphasis in pedagogy

Bachelor of Arts, with piano concentration

Undergraduate Admissions

Applicants for the Bachelor of Music degree must apply for admission to Southern Methodist University, complete a music theory diagnostic exam, and audition on piano. SMU admissions prefers a minimum SAT of 1100 (Verbal & Math combined) and four years each of English, Math, Science, and Social Studies in high school.

Undergraduate Financial Assistance

SMU Meadows School of the Arts has substantial artistic scholarship resources. No student with ability should hesitate to audition for our programs because of financial need. Those who have excelled academically are also eligible to receive academic scholarships.

Our scholarship auditions are held in the months of January and February. We look forward to giving you a warm welcome at our scholarship auditions. In addition to the auditions, private audition lessons with individual faculty members can be arranged.

If financial aid or scholarship is desired, the FAFSA and CSS Profile must be completed. If financial aid is not necessary but a scholarship is desired, a Waiver of Financial Aid Form must be completed with Meadows. Federal and state financial aid are calculated first. Then SMU calculates university academic scholarship based on your admissions rating and Meadows can add music scholarship based on your audition.

Inquiries may be directed to:
Meadows School of the Arts
Attn: Undergraduate Music Admissions
PO Box 750356, Dallas, TX 75275
Phone: 214.768.3217
Email: music@smu.edu

www.smu.edu



MEADOWS MUSIC STUDENTS FORM A CLOSE-KNIT COMMUNITY
TO ENGAGE WITH, LEARN FROM, AND ENJOY UNIVERSITY LIFE.



GRADUATE STUDIES

Degrees Offered

Master of Music in Piano Performance

Master of Music in Piano Performance and Pedagogy

Master of Music in Organ Performance

Master of Music in Harpsichord Performance

Master of Music

Applicants for the Master of Music degree should hold a Bachelor of Music, or equivalent degree from an accredited institution. A GPA of 3.0 on a 4.0 scale in undergraduate work is required, along with completed application forms, transcripts, and three letters of recommendation. An audition may be scheduled on the website or by calling 214.768.3217. Upon matriculation, students are required to take Music Graduate Diagnostic examinations in music history/literature and music theory to determine any deficiencies to be addressed in the program of study.

Performance Diploma

The Performer's Diploma (PD) is a two-year program for exceptional performers who already hold a minimum of a bachelor's degree or equivalent conservatory or professional qualifications and who are preparing for a professional career in performance. By their performance and credentials, applicants must demonstrate that they have the potential to become professional performers and are well on the way to realizing that potential. The program provides intensive studio instruction in performance along with ensemble, chamber music, and repertoire course work related to the major.

Artist Diploma

The Artist Diploma (AD) is a two-year program for a very small number of extraordinary performers who already hold a bachelor's degree, master's degree or equivalent conservatory or professional qualifications and who are on the threshold of a professional career in performance. By their performance and credentials, applicants must demonstrate that they are in the final stages of preparation to enter major competitions and/or to begin a solo professional performance career. Candidates for the AD must possess not only great talent, but the ability and determination to realize that talent in the contemporary musical world.

Graduate Financial Assistance

Financial aid is available to full-time students through scholarships, graduate assistantships, work-study and grants. Professional music educators employed in public or private schools are eligible to participate in the Master Educator plan, which offers credit for summer and part-time study at a reduced tuition rate. Full-time students are eligible to apply for financial assistance through regular scholarship and assistantship programs.

**MEADOWS STUDENTS HAVE
ABUNDANT OPPORTUNITIES
AND PERSONAL ATTENTION
TO DEVELOP THEIR GIFTS.**

Graduate Admissions

Inquiries may be directed to:

Joe Hoselton, Office of Graduate Records
Meadows School of the Arts
PO Box 750356
Dallas, TX 75275-0356
Phone: 214.768.3765
Email: hoselton@smu.edu

Piano audition repertoire inquiries:

Dr. Carol Leone
Phone: 214.768.3722
Email: cleone@smu.edu

Organ audition repertoire inquiries:

Dr. Larry Palmer
Phone: 214.768.3273
Email: lpalmer@smu.edu

www.smu.edu



KEYBOARD FACULTY

The faculty of the Meadows School of the Arts is committed to the highest standards of teaching and to active professional participation in music performance and research.

Piano Performance



Carol Leone, Chair

Pianist Dr. Carol Leone is Chair of the Keyboard Department and Associate Professor of Piano and at SMU Meadows School of the Arts. She has performed and taught throughout the U.S., Europe, and South Korea and has been a prizewinner in piano competitions such as the National Beethoven Sonata Competition, the Missouri Southern International Piano Competition, and the International Masters Competition. Her professional training has included study at The Curtis Institute

of Music in Philadelphia where she received a diploma and was a student of the legendary Polish pianist Mieczyslaw Horszowski. An active soloist and chamber musician, Dr. Leone is also in demand at national and international festivals and conferences as a teacher, lecturer, and adjudicator. She is one of the world's leading researchers and proponents of ergonomic piano keyboards to promote a pianist's wellness. Among Dr. Leone's many awards, she was named the 2005–2006 Texas Music Teachers Association's Collegiate Teacher of the Year. cleone@smu.edu / 214.768.3722



Joaquín Achúcarro

Internationally acclaimed pianist Joaquín Achúcarro has performed in 59 countries with over 200 different orchestras, among them the Berlin Philharmonic, the New York Philharmonic, La Scala of Milan, the London Symphony, Los Angeles Philharmonic, and Chicago Symphony. He has performed under an impressive list of 342 of the world's greatest conductors. He has recorded music by Brahms, Schumann, Ravel, Schubert, Granados, Falla, Chopin, Beethoven, Debussy, Bartók,

Rachmaninoff, and Rodrigo. In February 2010, *Opus Arte* internationally published a DVD of Achúcarro playing with the London Symphony and Sir Colin Davis along with a documentary about his life with comments by Sir Simon Rattle, Plácido Domingo and Zubin Mehta.

Professor Achúcarro has been knighted by King Juan Carlos of Spain with three of Spain's highest honors, and he holds the title of "Artist for Peace 2000" awarded by UNESCO in Paris, in recognition of his "extraordinary artistic achievement." Since September 1989, Achúcarro has held the Estes Tate Chair at SMU Meadows School of the Arts. He is also Professor of the Summer International Accademia Chigiana of Siena (Italy). jachucar@smu.edu / 214.768.3902



Alessio Bax

Winner of the 2009 Avery Fisher Career Grant, pianist Alessio Bax is praised for his lyrical playing and insightful interpretations. Since taking first prize at the 1997 Hamamatsu Piano Competition in Japan and the 2000 Leeds International Piano Competition, Bax has won audiences across the globe. His extensive concerto repertoire has led to appearances with over 80 orchestras including the London Philharmonic and Royal Philharmonic with conductors such as Marin Alsop and Sir Simon Rattle.

Festival appearances include London's International Piano Series and the Verbier Festival in Switzerland. He has performed at Lincoln Center, Royal Festival Hall, Suntory Hall, and at major venues in Rome, Milan, Madrid, Paris, London, Tel Aviv, Tokyo, Seoul, Hong Kong, New York, Washington DC, and Mexico City. An active chamber musician, he has collaborated with Joshua Bell and Steven Isserlis among others and has recently joined Lincoln Center's Chamber Music Society Two residency program. His recordings can be found on EMI, Warner, Naxos and Signum. He is an Adjunct Assistant Professor of Piano at Meadows School of the Arts. www.alessiobax.com / alessiobax@gmail.com / 214.768.4609



David Karp

David Karp, nationally known pianist, composer, educator, lecturer, and author, holds degrees from the Manhattan School of Music and the University of Colorado. Dr. Karp is Professor of Music and Director of the National Piano Institute for Teachers and Young Artists at the Meadows School of the Arts. He teaches courses in piano performance, composition, theory and aural skills, improvisation, and class piano techniques for the college teacher.

His former students are now professionally engaged on college campuses throughout the United States. He has performed, lectured, and conducted workshops and seminars at many colleges and universities from Alaska to New Hampshire and as far away as Taiwan. His performances include solo recitals, concerti, chamber music and accompanying. He has performed and recorded Simon Sargon's *Divertimento for Piano and Chamber Orchestra* (Gasparo Records) which was released Spring 2003. In November 2009, Dr. Karp's latest commissioned composition "Homesick," for voice, piano, flute and cello was premiered at the National Holocaust Survivors Conference at SMU. His piano music is published by Alfred, FJH, Carl Fischer, Hal Leonard and Willis Music Co. In 1993, Dr. Karp was honored with the establishment of the David Karp Piano Festival, an annual event held at Kilgore College in Kilgore, Texas, in which students perform and are judged on Karp compositions. dkarp@smu.edu / 214.768.3188



Alfred Mouledous

Alfred Mouledous is Professor of Piano at SMU Meadows School of the Arts and has been a member of the faculty since 1955. One of the nation's most sought after teachers, Mr. Mouledous has coached and taught students who have won top prizes on both national and international levels.

Professor Mouledous attended the Eastman School of Music, where he was a student of Cecile Genhart.

He earned a Bachelor of Music, Master of Music,

Performer's Certificate and Artist Diploma before moving to Paris as a Fulbright Scholar to study at the École Normale de Musique. He was a student in master-classes given by Walter Gieseking at the Musikhochschule in Saarbrücken, Germany and by Alfred Cortot in Paris. He has performed numerous solo and chamber recitals throughout the United States and has performed concerti with major orchestras, collaborating with conductors such as Georg Solti, Erich Leinsdorf, Howard Hanson, and Eduardo Mata. He has recorded for Mercury and Envoy Records and performed in concert on radio (WWL) and television (NBC). 214.768.3627

Organ and Harpsichord Performance



Larry Palmer

Larry Palmer has been on the faculty at SMU Meadows School of the Arts since 1970. He is currently Professor and Head of Organ and Harpsichord, and University Organist. Educated at Oberlin College Conservatory and the Eastman School of Music, Dr. Palmer is internationally known as performer, scholar, and teacher. He is the author of *Hugo Distler and His Church Music*, *Harpsichord in America – A 20th-Century Revival*, as well as a 2006 book of memoirs: *Letters from Salzburg –*

A Music Student in Europe 1958–1959. He has written more than 150 articles, many of them for *The Diapason*, for which he has been harpsichord contributing editor since 1969. Two solo recordings for The Musical Heritage Society and eleven compact discs for Encore Performance/Limited Editions and SoundBoard Recordings comprise his discography. Known for his stylish performances of baroque music, he is also committed to contemporary works: more than 50 new scores for harpsichord, organ, and choir have been written for him. lpalmer@smu.edu / 214.768.3273

Piano Pedagogy



Samuel S. Holland, Chair

Samuel S. Holland is a Professor and Director of the Division of Music at SMU Meadows School of the Arts where he also has served as Head of the Keyboard Studies and Pedagogy Department. A performance student of John Perry and Abbey Simon, he earned a Ph.D. in Music Education with an Emphasis in Piano Pedagogy from the University of Oklahoma. He has presented hundreds of lectures and recitals throughout North America, Europe, and Australia and has pioneered in the application

of computer and MIDI technology to performance and pedagogy. His articles have appeared in every major English language professional keyboard journal and he is the author of over 70 critically acclaimed method books and recordings published by Alfred Publishing Co. and the Frederick Harris Music Co. Dr. Holland is Executive Director of the Frances Clark Center for Keyboard Pedagogy and a co-founder of the Centre for Musical Minds in Frisco, TX.
sholland@smu.edu / 214.768.2544



Catharine Lysinger

Pianist Dr. Catharine Lysinger is the Director of the Piano Preparatory Department and a Lecturer in Piano Pedagogy at SMU Meadows School of the Arts. She has earned top prizes in national and international competitions such as the Music Teacher National Association Collegiate Competition (National Winner), the Shreveport Symphony Wideman Competition, the Vietri Sul Mare International Duet Competition, and the Corpus Christi International Young Artist Competition.

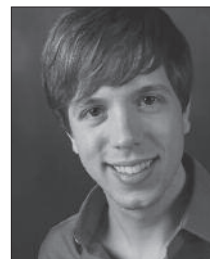
Prior to her arrival at SMU, Dr. Lysinger was the founding director of the University of Houston, Moores School of Music Preparatory and Continuing Studies Department. Her students have been consistent prizewinners in both state and local competitions. Under her guidance, the SMU Preparatory Department has flourished and consistently attracts dedicated pianists from all over the Dallas area. In conjunction with the 25th anniversary of the National Piano Teacher Institute, Catharine launched the first annual National Young Artist Institute in July 2007, a performance-based summer experience for pre-college students. Dr. Lysinger received the Doctor of Musical Arts and Master of Music degrees in Piano Performance at the University of Houston. lysinger@smu.edu / 214.768.1682



Matthew Kline

Matthew Kline is the Associate Director of the Piano Preparatory Department and a Lecturer in Piano Pedagogy at SMU Meadows School of the Arts. Born into a musical family, his mother was his first piano teacher. He later studied with David Pockock. He is a graduate of Hope College, where he studied piano with Joan Conway and Eurhythmics and Ear Training with Charles Aschbrenner. His holds a Master of Piano Performance and Piano Pedagogy from SMU where he studied piano with Alfred

Mouledous and Pedagogy with Dr. Sam Holland. Dedicated to teaching excellence in both the private and group settings, Mr. Kline believes that developing ones skills as teacher and musician is a lifelong endeavor. He eagerly instructs and develops students of all levels of abilities. His students receive recognition in local and regional festivals and competitions. Mr. Kline has lectured and adjudicated in Texas, Michigan, Illinois and in New Jersey. mkline@smu.edu / 214.768.4187



Kevin Gunter

Kevin Gunter serves as the Class Piano Coordinator at SMU Meadows School of the Arts where he instructs undergraduate and graduate students. Mr. Gunter holds degrees in piano from Samford University and Southern Methodist University, where he studied with Dr. Betty Sue Shepherd and Dr. David Karp, respectively. He also maintains an award-winning studio of pre-college students in SMU's Piano Preparatory Department, and he is sought after as an adjudicator for local piano festivals throughout the Dallas-Fort Worth area.

Mr. Gunter is an active musical director and performer in the Dallas theatre venues. Mr. Gunter is an active member of the Music Teachers National Association, as well as the Texas MTA and Dallas MTA. In May 2005, he received the Roy and Sue Johnson Award from the SMU Division of Music for excellence in teaching. During the summers, Mr. Gunter is a director of the Young Artists Institute, which hosts exceptional pre-college piano students from around the state of Texas. In summer 2009, Mr. Gunter celebrated the debut of one of his piano students at the National Conference on Keyboard Pedagogy in Chicago, Illinois. He is also featured in the Fall 2009 issue of Samford University's *Seasons Magazine* in the "Adventures in Music" article. kgunter@smu.edu / 214.768.2695





SMU[™]

MEADOWS

SCHOOL OF THE ARTS

PO Box 750356

Dallas, TX 75275-0356