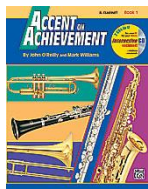


FRENCH HORN SUPPLY LIST

French Horn is a school-owned instrument. You will pay a \$100.00 usage fee for use of the oboe for the entire school year. Payments will be made at our Band Registration day on August 21. Your child's instrument will be issued prior to starting summer lessons or during the first week of school. Private lessons are strongly recommended for the French Horn.

You will need to obtain these items from a music store:



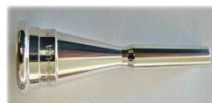
Accent on Achievement Interactive version Book 1 for French Horn by O'Reilly and Williams



First Book of Practical Studies.
Belwin Publishers



Korg TM50 Tuner and Metronome



Warburton M8 mouthpiece



Korg Clip-On Tuner Pick-up



One mouthpiece brush



5 Minute Theory book for French Horn by Mark Wessels



One "Berp"



Schilke Tuning Slide Grease



Holton Rotor Valve Oil *AND*
Holton Brand Key Oil



Folding Wire Music Stand for Home Practice

You will also need to obtain these items from any local discount or office supply store:



Durable Name Tag for Instrument Case (Include Student and School Name on Tag)



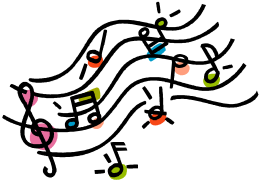
Pencil Pouch with plenty of Pencils



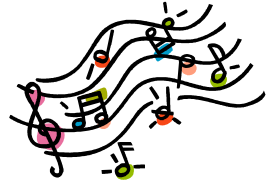
1 inch thick Black 3-ring Binder with Pockets and 5 Dividers



One yellow and one green highlighter



CONTACT INFORMATION



Tiffany Lisko (woodwinds)
(469) 302-6700
tlisko@mckinneyisd.net

Clark Eacker (brass)
(469) 302-6700
ceacker@mckinneysid.net

Josh Boychuk (percussion)
(469) 302-6700
jboychuk@mckinneyisd.net

www.dowellband.org

*** * *Important Notes * * ***

*****It is *VERY* important that you choose a brand from our preference list. These instruments have been carefully researched for their quality and reliability. Please refrain from purchasing instruments from any general internet or large retail sources. The majority of those instruments are not constructed of consistent and sturdy materials. They will hinder the progress of your child's band experience as well as requiring extra visits to repair shops costing you more in the long run.**

Williamson Music Company
701 E. Plano Parkway Suite #100
Plano, TX 75074 (across from Fry's)
(972) 516-1331
www.williamsonmusicco.com

ANYTHING ELSE?

Your child should not bring their instrument on the first day of school. If your child's equipment is delivered to the school, we will assist with having everything ready to pass out to them when school starts (second day of school).

Remember, all band materials and instruments look the same, so please be sure to label everything before you come to school! Luggage tags are wonderful ways to display your name and phone number on your instrument case. Please contact us with any questions.



READ THIS BEFORE YOU RENT OR PURCHASE AN INSTRUMENT!

As we enroll your child in a band class for next year, your next major consideration is that of obtaining a quality music instrument for your child. A child's musical education can be greatly enhanced or greatly harmed by the choice in the quality of the instrument. A child playing on a good instrument will feel successful, while the same child trying to play an inferior instrument can become very frustrated.

Approved Equipment List: We have found that not all instruments and equipment are manufactured to the same standards. The items listed on your materials list as approved selections have been chosen and cleared by the McKinney ISD band staff based on years of experience. Purchasing an instrument not listed for DMS Band students could hamper your child's development and progress, even if it is approved by another school.

Instrument Delivery: Williamson Music, Music and Arts, Brook Mays and Music First can arrange to deliver your child's instrument directly to the school at no charge to you. This is strongly encouraged, since it assures you that your child will not damage the instrument due to a lack of proper instruction. Additionally, children will not develop bad habits due to this same lack of instruction and reinforcement. If you do not arrange to have your instrument delivered to the school, you should not allow your child to handle the instrument before school starts. The only exception is if your child is in private lessons over the summer.

Maintenance and Service: All instruments require some service, adjustment and cleaning. The amount of service required is dependent upon how your child handles and cares for their instrument. The better your child takes care of their instrument, the less you will

need to spend in the long run on service. We will provide proper instruction on instrument maintenance in the school year.

IMPORTANT REMINDERS

- Only use instruments from the approved list unless cleared by Mrs. Lisko, Mr. Eacker or Mr. Boychuk
- Never purchase an instrument from a discount store!
- Never purchase an instrument from a foreign country!
- Have the band directors inspect any instrument from a third party (classified ad, E-Bay, old family instrument, etc.) before you purchase/use it!

Thank you for allowing your child to become a part of our band family at Dowell Middle School. We are looking forward to many fun hours of working with your child and making music!



The DMS Band subscribes to the CHARMS Music Office Assistant software for managing various components of our music programs. CHARMS is a secure program with information only accessible to the DMS Band Staff. Your contact information will only be used to send information and reach you regarding issues in the band program.

Please take a moment to access your child's CHARMS account and enter and/or update your contact information. You may also wish to explore the various features, particularly the calendar and handouts section.

TO ACCESS CHARMS, PLEASE FOLLOW THESE INSTRUCTIONS:

- Log on to www.charmsoffice.com
- Click on the "Enter" tab at the top right corner
- Under the "Parent/Student Members" in the middle of the page, enter our school code:

DowellMSBand

- Keep this login handy as you will need it every time you access CHARMS.
- In the box labeled "Student Area Password", please enter your student's **6 digit ID number** they use at their school, and then press ENTER.
- You should then be taken to the main screen for your student's account.
- Click on "**Personal Info**" and enter any missing information. This especially includes your email addresses for parents and student. This is our main form of communication throughout the year.
 - Verify that your student's name is spelled correctly.
 - Verify that your home address and phone number are correct.
 - You may enter an email address and cell phone number for your child if you wish.
 - Verify that parent emails and phone numbers are correct.

- Verify that their birthday is correct.
- Then you may also browse the other available features:
 - SCHOOL CALENDAR:** Events, activities and due dates listed by month
 - EVENT LIST:** Look at the events, activities and due dates for the entire year
 - EMAIL TEACHERS:** Send us an email!
 - HANDOUTS:** Files that pertain to all band students (forms, etc.)
 - ASSIGNED INVENTORY:** Any instrument/equipment that is assigned out
 - PERSONAL INFO:** All contact information on the student. This is ONLY accessible by you and by the directors. No other students will be able to see this information.
 - CHANGE PASSWORD:** **DO NOT** change your password!!! You may lose the ability to access CHARMS and your student account.

VERY IMPORTANT: Once you have entered your information, you must click the “UPDATE” button for it to save.



Remind101 is a FREE and safe way for teachers to text and message students and stay in touch with parents. Teachers and students never see each others' phone numbers and it is completely private.

To sign up and receive these messages, please see the instructions below:

Beginner Band Students 2015-2016

Text @c8e052 to 81010

Follow us on Facebook at **Dowell Middle School Band**

Follow me on Instagram @mrslisko

Follow us on Pinterest at **Dowell Band**

Volunteer Information

In order to be a chaperone/volunteer for any band events, you must be cleared as an official MISD volunteer. Each volunteer must fill out information for a background check online. We will explain more about volunteer opportunities at our Registration Meeting.

Visit www.mckinneyisd.net/parents/volunteer

APPROVED PRIVATE INSTRUCTORS FOR DMS BAND

<u>INSTRUMENT</u>	<u>TEACHER</u>		<u>PHONE</u>	<u>EMAIL</u>
Flute	Amy	Thiemann	402-660-9058	amy_k_t@yahoo.com
Oboe	Steve	Petty	972-396-8836	oboe1kenobi@gmail.com
Bassoon	Milena	Egan	214-725-9709	milena_egan@hotmail.com
Clarinet	Kathy	Horner	972-658-9141	kathy.a.horner@gmail.com
Saxophone	Mike	Korson	214-709-6140	mikekorson@yahoo.com
	Joey	Resendez	214-864-4809	joey.resendez@gmail.com
Trumpet	Julia	Flores	214-674-1953	Stultingflores1@att.net
	Steve	Clark	469-396-2996	stephen.stark7@gmail.com
French Horn	Abdiel	Alomodovar	940-268-9987	almodovarabdiel@yahoo.com
Trombone	Tony	Bianchetta	940-300-0071	tonybbrass@gmail.com
	Seth	Vatt	423-309-6317	stvatt@gmail.com
Euphonium	Vince	Kenney	309-212-4432	vkenney21@gmail.com
Tuba	Don	Pierce	214-504-5155	donaldpierce@yahoo.com
Percussion	Rachel	Lui	940-595-1929	yijanliu@gmail.com
	Michael	Nation	318-210-2418	mikenation@me.com

Please call or email to set up summer private lessons in May to be sure and fit into their schedules. These teachers fill up quickly and we want to be sure you get into lessons! Payment, lesson dates/times can be discussed with the individual teacher as well ahead of time.

