

# Dunham Elementary Charter School & Dunham Elementary School

## School Accountability Report Card



**GRADES K-5:** Dunham Elementary Charter School

**GRADE 6:** Dunham Elementary School

4111 Roblar Road Petaluma, CA 94952

**Phone:** (707) 795-5050 **Fax:** (707) 795-5166

**Website:** <http://dunhamsd.org>

**Adam Schaible**, Superintendent/Principal

**2010-11 School Accountability Report Card  
Published During the 2011-12 School Year**

### A Note to the Reader:

*Please be advised, beginning with the 2010-11 school year Dunham School District switched from being a one school district to a two school district, with Dunham Charter now serving grades K-5 and Dunham Elementary serving grade 6 students. Please keep this in mind when reviewing and interpreting the data in this School Accountability Report.*

### Principal's Message

#### Dunham Elementary School

Dunham Elementary School is nestled in the rural dairy lands of northern Petaluma. Our school, established in 1870, is one of two in our small district and serves 21 students in Grade Six. Our student demographics are as follows: 82% white; 15% Hispanic, 1% Asian and 2% Two or More Races. Approximately 27% percent of our students receive free or reduced price lunch. Our school community is a blend of families from all over the South Sonoma County area. Over 55% of students attending Dunham School come from other districts. As a community of learners, we seek to create a school where each child is known, valued, and supported to reach his full academic potential. We seek to create a school where childhood is celebrated and where academic excellence is partnered with an emphasis on the social and moral development of our students. Our consistently high test scores are one indicator of our success in carrying out our vision.

#### Dunham Elementary Charter School

Dunham Elementary Charter School is located on the same campus as the elementary school. Our school, established in 1870, is one of two in our small district and serves 155 students in grades kindergarten through five. Our student demographics are as follows: 82% white; 15% Hispanic, 1% Asian and 2% Two or More Races. Approximately 27% percent of our students receive free or reduced price lunch. Our school community is a blend of families from all over the South Sonoma County area. Over 55% of students attending Dunham School come from other districts. We have one class per grade level, which has helped us to create a true sense of family and stability for our students as they move through the grades with the same group of students. Our vision statement reflects our values and goals: As a community of learners, we seek to create a school where each child is known, valued, and supported to reach his full academic potential. We seek to create a school where childhood is celebrated and where academic excellence is partnered with an emphasis on the social and moral development of our students. Our consistently high test scores are one indicator of our success in carrying out our vision.

### Parental Involvement

Parents are integral to our schools. Due to the high inter-district participation, parents are extremely involved in their child's education. Based upon data from the School Site Council (SSC) Survey, 96% of our parents reported that they feel that they are a part of the school community. Other areas for organized involvement of parents in the school include our school Parent Teacher Organization (PTO). Most of our families join PTO and participate in at least some of the PTO activities. We have an active SSC with strong parent participation, as well as an active community-based school board.

For more information on how to become involved, please contact Pam Kahl, Office Manager at (707) 795-5050 or email at [pkahl@dunhamsd.k12.ca.us](mailto:pkahl@dunhamsd.k12.ca.us).

*"Dunham Elementary School: Where the Grass Really Is Greener"*

### Dunham School District

In accordance with State and federal requirements, the School Accountability Report Card (SARC) is put forth annually by all public schools as a tool for parents and interested parties to stay informed of the school's progress, test scores and achievements.



### Dunham Governing Board

**Ann Gilbert**  
President

**Spencer Crum**  
Trustee

**Joanne Rice**  
Trustee

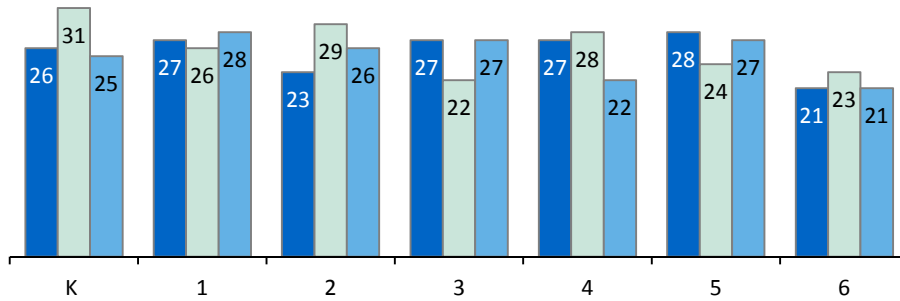
**Alicia Petersen**  
Trustee

**Lisa Poncia**  
Trustee

### Class Size

08-09 09-10 10-11

The bar graph displays the three-year data for average class size.

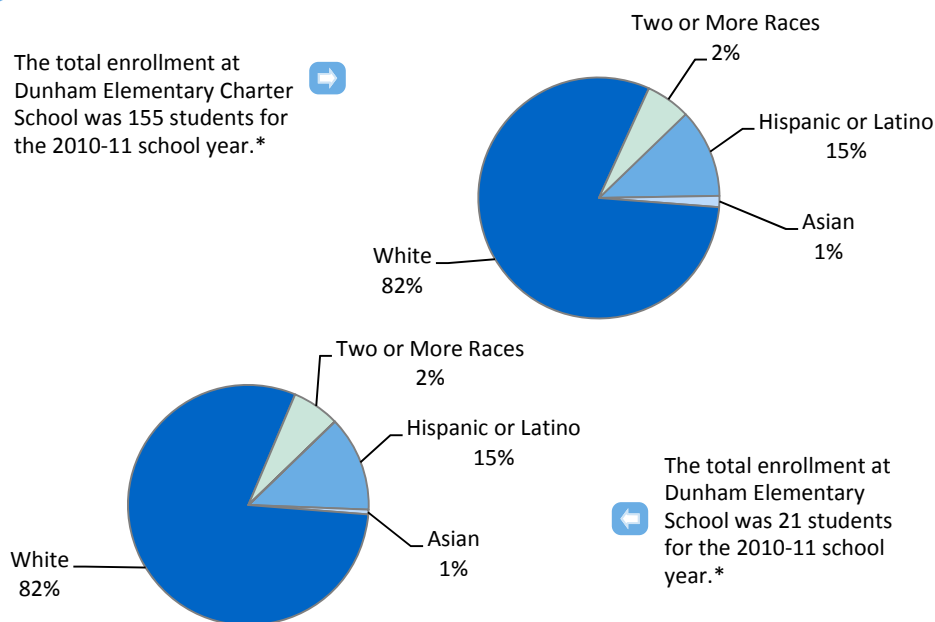


### Class Size Distribution — Number of Classrooms By Size

Grade	08-09			09-10			10-11		
	1-20	21-32	33+	1-20	21-32	33+	1-20	21-32	33+
K		1			1			1	
1		1*			1*			1*	
2		1			1			1	
3		1			1			1	
4		1			1			1	
5		1			1			1	
6		1			1			1	

### Enrollment and Demographics

The total enrollment at Dunham Elementary Charter School was 155 students for the 2010-11 school year.\*



\* Our first grade class has an average class size of 27 students but includes a part-time Option 2 Class Size Reduction teacher for 3.5 hours per day.



### Mission Statement

As a community of learners, we seek to create a school where each child is known, valued, and supported to reach his/her full academic potential. We seek to create schools where childhood is celebrated and where academic excellence is partnered with an emphasis on the social and moral development of our students.

### Student Enrollment by Group

Dunham CS	
Socioeconomically Disadvantaged	26.9%
English Learners	9.6%
Students with Disabilities	14.7%
Dunham ES	
Socioeconomically Disadvantaged	9.7%
English Learners	19.4%
Students with Disabilities	0%

### School Facility Items Inspected

The tables show the results of the school's most recent inspection using the Facility Inspection Tool (FIT) or equivalent school form. The following is a list of items inspected.

- **Systems:** Gas Systems and Pipes, Sewer, Mechanical Systems (heating, ventilation, and air conditioning)
- **Restrooms/Fountains:** Restrooms, Sinks/Drinking Fountains (interior and exterior)
- **Interior:** Interior Surfaces (floors, ceilings, walls, and window casings)
- **Safety:** Fire Safety Equipment, Emergency Systems, Hazardous Materials (interior and exterior)
- **Cleanliness:** Pest/Vermin Control, Overall Cleanliness (school grounds, buildings, rooms, and common areas)
- **Structural:** Structural Condition, Roofs
- **Electrical:** Electrical Systems (interior and exterior)
- **External:** Windows/Doors/Gates/Fences, Playgrounds/School Grounds

### School Facility Good Repair Status

This inspection determines the school facility's good repair status using ratings of good condition, fair condition, or poor condition. The overall summary of facility conditions uses ratings of exemplary, good, fair, or poor condition.

School Facility Good Repair Status			
Items Inspected	Repair Status	Items Inspected	Repair Status
Systems	Good	Restrooms/Fountains	Good
Interior	Good	Safety	Good
Cleanliness	Good	Structural	Good
Electrical	Good	External	Good
Overall Summary of Facility Conditions			Good
Date of the Most Recent School Site Inspection			08/19/2011
Date of the Most Recent Completion of the Inspection Form			10/03/2011

### Deficiencies and Repairs

The table lists the repairs required for all deficiencies found during the school site inspection. Regardless of each item's repair status, all deficiencies are listed.

Deficiencies and Repairs	
Items Inspected	Deficiencies, Action Taken or Planned, and Date of Action
Restrooms/Fountains	Boy's and Girl's bathrooms both completely remodeled in the Summer of 2011. Repairs included replacing tile, grout, and fixtures

### School Facilities

All students are adequately housed at Dunham. Classroom space is more than adequate for all programs, including Special Education. Playgrounds are very well maintained and provide very generous play area for students. All classrooms have heating and air conditioning. Restrooms are well maintained and are kept clean. One part-time cleaner comes in the evenings on a daily basis. The Dunham PTO sponsors cleanup/ landscaping days throughout the year in order to constantly improve upon the appearance of the facility. All classrooms are connected to the Internet, and are networked in order to share technology between classes.

*Continued on the sidebar*

### School Facilities

*Continued from the left*

The following safety measures are taken to ensure our students and staff have a safe and healthy environment: our school is gated, and visitors must sign-in at the school office and receive a visitor's pass to enter the campus.

Dunham Elementary School was built in 1971. The school has seven regular classrooms, a library, a multipurpose room, a Spanish language classroom, and a Special Education room.

There were three portables used during the 2007-08 school year to meet the needs of our student enrollment. Athletic facilities include a track and field.

The District participates in the State School Deferred Maintenance Program, which provides state matching funds on a dollar-for-dollar basis, to assist school districts with expenditures for major repair or replacement of existing school building components. Typically, this includes roofing, plumbing, heating, air conditioning, electrical systems, interior or exterior painting, and floor systems. For the 2011-12 school year, the District budgeted \$40,800 for the Deferred Maintenance Program. This represents 3.4% of the District's general fund budget.



### Textbooks and Instructional Materials

All textbooks used in the curricular program are State-adopted and approved. Our most recent textbook adoption was the Houghton-Mifflin Language Arts Series adopted in 2002-03 school year for all grades. The Saxon Math Series was adopted in all grades in the 2000-01 school year. We follow the State adoption cycle in language arts, math, history, and science and are looking forward to adopting new social studies and science materials during the next adoption cycle. Each pupil of the school has sufficient textbooks and instructional materials. The district has affirmed that every student, including English Learners, has access to their own textbooks and instructional Materials, to use in class and to take home.

The Dunham School District has sufficient textbooks and instructional materials for all students including English Learners to use in class and to take home in language arts, mathematics, history social science, and science. The English language arts textbook, Houghton Mifflin, was adopted in 2002; Wright/McGraw-Hill EveryDay Math was adopted in 2008. Both textbooks are on the California Department of Education-approved list. The staff selected new history/social science texts in 2005 and new science materials and texts in 2006 in accordance to the State textbook adoption cycle.

Visual and performing arts are offered as part of the core curriculum and, as such, any materials or textbooks are provided for all students.

**Textbooks and Instructional Materials List**

Subject	Textbook	Adopted
English-Language Arts	(Supplemental use Sound-a-bet in Kindergarten) Houghton/Mifflin K-6	2002
English-Language Arts	(Supplemental use Sound-a-bet in Kindergarten) Houghton/Mifflin K-6	2002
Science	FOSS K-5	2007
Science	Pearson 6	2007
History-Social Science	<i>Social Science, Harcourt K-3</i>	2006
History-Social Science	Houghton-Mifflin 4-6	2006

### Quality of Textbooks

The following table outlines the criteria required for choosing textbooks and instructional materials.

**Quality of Textbooks**

	Yes/No
Are the textbooks adopted from the most recent state-approved or local governing board approved list?	Yes
Are the textbooks consistent with the content and cycles of the curriculum frameworks adopted by the State Board of Education?	Yes
Does every student, including English Learners, have access to their own textbooks and instructional materials to use in class and to take home?	Yes

### Currency of Textbook Data

This table displays the date when the textbook and instructional materials information was collected and verified.

**Currency of Textbook Data**

Data Collection Date	06/2011
----------------------	---------

◇ Not applicable.

### Availability of Textbooks and Instructional Materials

The following lists the percentage of pupils who lack their own assigned textbooks and instructional materials:

**Dunham CS & Dunham ES**

Subject	Percent Lacking
Reading/Language Arts	0%
Mathematics	0%
Science	0%
History-Social Science	0%
Visual and Performing Arts	◇
Foreign Language	◇
Health	◇



### Types of Services Funded

The District receives categorical funding for the following programs:

- EIA
- Spec. Ed.
- Title I
- Title II Part A
- Title III

Funding is used to provide the following services: Class Size reduction in first grade, intervention services for students in grades 2-6, English language development support for all English learners, staff development and library services.

### STAR Results for All Students: Three-Year Comparison

The Standardized Testing and Reporting (STAR) results are evaluated and compared to state standards using the following five performance levels: **Advanced** (*exceeds state standards*); **Proficient** (*meets state standards*); **Basic**; **Below Basic**; and **Far Below Basic**. Students scoring at the Proficient or Advanced level meet state standards in that content area. The tables show the percentage of students that scored at Proficient or Advanced levels in English-language arts, mathematics, and science.

Percentage of Students Scoring at Proficient or Advanced Levels						
	Dunham CS			Dunham ES		
	08-09	09-10	10-11	08-09	09-10	10-11
English-Language Arts	✎	✎	56%	64%	65%	71%
Mathematics	✎	✎	71%	59%	63%	48%
Science	✎	✎	73%	71%	55%	✎
	Dunham SD			California		
	08-09	09-10	10-11	08-09	09-10	10-11
English-Language Arts	64%	65%	59%	49%	52%	54%
Mathematics	59%	63%	59%	46%	48%	50%
Science	71%	55%	73%	50%	54%	57%

### Dunham Elementary Charter School STAR Results by Student Group: English-Language Arts, Mathematics, and Science

Percentage of Students Scoring at Proficient or Advanced Levels			
Group	Spring 2011 Results: Dunham CS		
	English-Language Arts	Mathematics	Science
All Students in the District	59%	59%	73%
All Students at the School	56%	61%	73%
Male	51%	65%	75%
Female	62%	56%	71%
Black or African American	✎	✎	✎
American Indian or Alaska Native	✎	✎	✎
Asian	✎	✎	✎
Filipino	✎	✎	✎
Hispanic or Latino	58%	50%	✎
Native Hawaiian or Pacific Islander	✎	✎	✎
White	53%	60%	71%

✎ Dunham Elementary Charter School opened in the 2010-11 school year. Therefore, no data prior to 2010-11 is available.

✎ Not applicable. No students at Dunham Elementary School took the Science CST.

✎ Scores are not shown when the number of students tested is 10 or less, either because the number of students tested in this category is too small for statistical accuracy or to protect student privacy.

### Standardized Testing and Reporting Program

The Standardized Testing and Reporting (STAR) Program aims to identify strengths and weaknesses to improve student learning. STAR consists of several key tests that are designed for the student's age and individual needs. These tests include: the California Standards Test (CST), California Modified Assessment (CMA), and California Alternate Performance Assessment (CAPA).

The CSTs are multiple choice tests in English-language arts, mathematics, science, and history-social science for varying grade levels. Some grade levels also participate in an essay writing test. The CSTs are used to determine students' achievement of the California Academic Content Standards. These standards describe the knowledge and skills that students are expected to learn at each grade level and subject.

The CMA is a modified assessment for students with disabilities who have an individualized education program (IEP). It is designed to assess those students whose disabilities prevent them from achieving grade-level proficiency on an assessment of the content standards with or without accommodations.

The CAPA is an alternate assessment for students with significant cognitive disabilities who are unable to take the CST with accommodations or modifications or the CMA with accommodations.

For more information on the STAR program including tests, participation, groups, and scores by grade level, please visit <http://star.cde.ca.gov/>.



**Dunham Elementary Charter School STAR Results by Student Group:  
English-Language Arts, Mathematics, and Science**

Percentage of Students Scoring at Proficient or Advanced Levels			
	Spring 2011 Results: Dunham CS		
Group	English-Language Arts	Mathematics	Science
Two or More Races	❖	❖	❖
Socioeconomically Disadvantaged	38%	35%	❖
English Learners	❖	❖	❖
Students with Disabilities	19%	19%	❖
Students Receiving Migrant Education Services	❖	❖	❖

**Dunham Elementary School STAR Results by Student Group:  
English-Language Arts and Mathematics**

Percentage of Students Scoring at Proficient or Advanced Levels		
	Spring 2011 Results: Dunham ES	
Group	English-Language Arts	Mathematics
All Students in the District	59%	59%
All Students at the School	71%	48%
Male	62%	46%
Female	❖	❖
Black or African American	❖	❖
American Indian or Alaska Native	❖	❖
Asian	❖	❖
Filipino	❖	❖
Hispanic or Latino	❖	❖
Native Hawaiian or Pacific Islander	❖	❖
White	88%	53%
Two or More Races	❖	❖
Socioeconomically Disadvantaged	❖	❖
English Learners	❖	❖
Students with Disabilities	❖	❖
Students Receiving Migrant Education Services	❖	❖

❖ Scores are not shown when the number of students tested is 10 or less, either because the number of students tested in this category is too small for statistical accuracy or to protect student privacy.

**California Physical Fitness Test**

Each spring, all students in grades 5, 7, and 9 are required to participate in the California Physical Fitness (PFT). The *Fitnessgram*® is the designated PFT for students in California public schools put forth by the State Board of Education. PFT measures six key fitness areas:

1. Aerobic Capacity
2. Body Composition
3. Flexibility
4. Abdominal Strength and Endurance
5. Upper Body Strength and Endurance
6. Trunk Extensor Strength and Flexibility

Encouraging and assisting students in establishing lifelong habits of regular physical activity is the primary goal of the *Fitnessgram*®. The table shows the percentage of students meeting the fitness standards of being in the “healthy fitness zone” for the most recent testing period. For more detailed information on the California PFT, please visit [www.cde.ca.gov/ta/tg/pf/](http://www.cde.ca.gov/ta/tg/pf/).

Percentage of Students Meeting Fitness Standards	
Dunham CS: Grade 5	
Four of Six Standards	18.5%
Five of Six Standards	11.1%
Six of Six Standards	70.4%



### Academic Performance Index

The Academic Performance Index (API) is an annual measure of the academic performance and progress of the schools within California. API is measured on a scale from 200 to 1,000. This score reflects the school, district or a student group’s performance level, based on the results of statewide testing. The state has set an API score of 800 as the statewide target.

The annual API reporting cycle consists of the Base and Growth API. The Base API data is released one year after testing occurs (i.e. The 2010 Base is calculated from results of statewide testing in spring 2010, but is not released until May 2011). Growth API, released following the Base API, calculates test results taken from the most recent school year (i.e. The Growth API is calculated from results of statewide testing in spring 2010 and released in August 2010). Therefore, for the 2010-2011 API reporting cycle, the 2010 Base indicator and 2011 Growth indicator are used.

To learn more about API, please visit the API information guide at [www.cde.ca.gov/ta/ac/ap/documents/infoguide11.pdf](http://www.cde.ca.gov/ta/ac/ap/documents/infoguide11.pdf) and the API overview guide at [www.cde.ca.gov/ta/ac/ay/documents/overview11.pdf](http://www.cde.ca.gov/ta/ac/ay/documents/overview11.pdf).

### API Ranks

API Ranks — Three Year Comparison						
	Dunham CS			Dunham ES		
	2008	2009	2010	2008	2009	2010
Statewide API Rank	⌘	⌘	⌘	7	7	7
Similar Schools API Rank	⌘	⌘	⌘	2	2	3

### API Testing

Assessment data is reported only for numerically significant groups. To be considered numerically significant for the API, the group must have either: (1) at least 50 students with valid STAR Program scores who make up at least 15% of the total valid STAR Program scores, or (2) at least 100 students with valid STAR Program scores.

### API Ranks

Schools are ranked in ten categories of equal size, called deciles, from 1 (lowest) to 10 (highest) based on their API Base reports. A school’s “statewide API rank” compares its API to the APIs of all other schools statewide of the same type (elementary, middle, or high school). A “similar schools API rank” reflects how a school compares to 100 statistically matched similar schools. This table shows the school’s three-year data for statewide API rank and similar schools API rank, for which information is available.

### API Growth by Student Group

This table displays, by student group, first, the 2011 Growth API at the school, district, and state level followed by the actual API change in points added or lost for the past three years.

API Growth by Student Group – 2011 Growth API								
Group	2011 Growth API							
	Dunham CS		Dunham ES		Dunham SD		California	
	Number of Students	Growth API	Number of Students	Growth API	Number of Students	Growth API	Number of Students	Growth API
All Students	101	803	20	785	121	800	4,683,676	778
Black or African American	0	■	0	■	0	■	317,856	696
American Indian or Alaska Native	0	■	0	■	0	■	33,774	733
Asian	1	■	0	■	1	■	398,869	898
Filipino	0	■	0	■	0	■	123,245	859
Hispanic or Latino	12	755	4	■	16	693	2,406,749	729
Native Hawaiian or Pacific Islander	0	■	0	■	0	■	26,953	764
White	82	806	16	855	98	813	1,258,831	845
Two or More Races	4	■	0	■	4	■	76,766	836
Socioeconomically Disadvantaged	26	698	7	■	33	687	2,731,843	726
English Learners	8	■	4	■	12	710	1,521,844	707
Students with Disabilities	21	556	5	■	26	583	521,815	595

⌘ Dunham Elementary Charter School opened in the 2010-11 school year. Therefore, no data prior to 2010-11 is available.

■ Data are reported only for numerically significant groups.

### API Growth by Student Group: Actual API Change

API Growth by Student Group — Actual API Change: Three Year Comparison						
Group	Dunham CS			Dunham ES		
	08-09	09-10	10-11	08-09	09-10	10-11
All Students	↔	↔	↔	8	8	-46
Black or African American	↔	↔	↔	■	■	■
American Indian or Alaska Native	↔	↔	↔	■	■	■
Asian	↔	↔	↔	■	■	■
Filipino	↔	↔	↔	■	■	■
Hispanic or Latino	↔	↔	↔	■	■	■
Native Hawaiian or Pacific Islander	↔	↔	↔	■	■	■
White	↔	↔	↔	-11	10	■
Two or More Races	↔	↔	↔	■	■	■
Socioeconomically Disadvantaged	↔	↔	↔	■	■	■
English Learners	↔	↔	↔	■	■	■
Students with Disabilities	↔	↔	↔	■	■	■

### API Growth by Student Group: Actual API Change

This table displays, by student group, the actual API change in points added or lost for the past three years.



### Professional Development

All staff at Dunham School participates in extensive training. Our instructional assistants are included in any relevant training provided to the teachers. Topics for staff development are determined by staff and are guided by the annual school plan. Prior year assessment data are used to determine areas of emphasis for staff development. Curriculum adoptions are fully supported with more than adequate staff development prior to implementation of the new curriculum materials.

For the previous three school years, we had three days each year dedicated to staff and professional development. For 2010-11, we reduced this number in order to avoid having "furlough days," which would adversely affect students.

### School Safety

The key elements of the adopted Safety Plan include:

- Levels of emergencies
- Plan implementation
- Planning; communication
- Emergency actions
- Emergency preparedness procedures
- Responsibilities of staff
- Emergency teams
- Personal preparedness

The School Safety Plan was last reviewed, updated, and discussed with the school faculty in December 2011.

↔ Dunham Elementary Charter School opened in the 2010-11 school year. Therefore, no data prior to 2010-11 is available, including API comparison data.

### Suspensions and Expulsions

This table shows the rate of suspensions and expulsions (the total number of incidents divided by the school's total enrollment) for the most recent three-year period.

Suspension and Expulsion Rates			
Dunham CS			
	08-09	09-10	10-11
Suspension Rates	↔	↔	0.050
Expulsion Rates	↔	↔	0.000
Dunham ES			
	08-09	09-10	10-11
Suspension Rates	0.050	0.062	0.167
Expulsion Rates	0.000	0.000	0.000
Dunham SD			
	08-09	09-10	10-11
Suspension Rates	0.050	0.062	0.065
Expulsion Rates	0.000	0.000	0.000

*"We seek to create a school where childhood is celebrated and where academic excellence is partnered with an emphasis on the social and moral development of our students."*



*“Our vision statement reflects our values and goals: As a community of learners, we seek to create a school where each child is known, valued, and supported to reach his full academic potential.”*



### Adequate Yearly Progress

The No Child Left Behind (NCLB) Act requires that all schools and districts meet Adequate Yearly Progress (AYP) requirements. California public schools and districts are required to meet or exceed criteria in these four target areas:

1. Participation rate on statewide assessments in English-language arts and mathematics
2. Percentage of students scoring proficient on statewide assessments in English-language arts and mathematics
3. API scores
4. Graduation rate for high schools

The table displays whether or not the school and district met each of the AYP criteria and made overall AYP for 2010-11. For more information, visit [www.cde.ca.gov/ta/ac/ay/](http://www.cde.ca.gov/ta/ac/ay/).

Adequate Yearly Progress Criteria						
	Dunham CS		Dunham ES		Dunham SD	
<b>Met Overall AYP</b>	No		No		No	
<b>AYP Criteria</b>	<b>English-Language Arts</b>	<b>Math</b>	<b>English-Language Arts</b>	<b>Math</b>	<b>English-Language Arts</b>	<b>Math</b>
<b>Participation Rate</b>	Yes	Yes	No	No	Yes	Yes
<b>Percent Proficient</b>	No	No	No	No	No	No
<b>API</b>	Yes		**		Yes	
<b>Graduation Rate</b>	✘		✘		✘	

### Federal Intervention Program

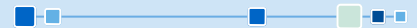
Districts and schools receiving Title I funding that fail to meet AYP over two consecutive years in the same content area (English-language arts or mathematics) or on the same indicator (API or graduation rate) can enter into Program Improvement (PI). Each additional year that the district or schools do not meet AYP results in advancement to the next level of intervention. This table displays the 2011-12 Program Improvement status for the school and district. For more information, please visit [www.cde.ca.gov/ta/ac/ay/](http://www.cde.ca.gov/ta/ac/ay/).

Federal Intervention Program		
	Dunham CS & Dunham ES	Dunham SD
<b>Program Improvement Status</b>	Not In PI	Not In PI
<b>First Year of Program Improvement</b>	◇	◇
<b>Year in Program Improvement</b>	◇	◇
<b>Number of Schools Identified for Program Improvement</b>	0	
<b>Percent of Schools Identified for Program Improvement</b>	0%	

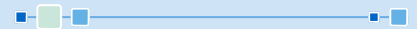
- ✘ Not applicable. The graduation rate for AYP criteria applies to high schools.
- \*\* The API indicator for AYP cannot be determined when there are fewer than 50 valid test scores.
- ◇ Not applicable.

### Public Internet Access

Internet access is available at public libraries and other locations that are publicly accessible (i.e., the California State Library). Access to the Internet at libraries and public locations is generally provided on a first-come, first-served basis. Other use restrictions include the hours of operation, the length of time that a workstation may be used (depending on availability), the types of software programs available at a workstation, and the ability to print documents.



*“Parents are integral to our school. Due to the high inter-district participation in the school, parents are extremely involved in their child’s education.”*



### Teacher Qualifications

This table shows information about teacher credentials and teacher qualifications. More information can be found by visiting <http://data1.cde.ca.gov/dataquest/>.

Teacher Credential Information							
	Dunham SD	Dunham CS			Dunham ES		
Teachers	10-11	08-09	09-10	10-11	08-09	09-10	10-11
With Full Credential	11	✕	✕	1	11	11	10
Without Full Credential	0	✕	✕	0	0	0	0
Teaching Outside Subject Area of Competence		✕	✕	0	0	0	0

### Teacher Misassignments and Vacant Teacher Positions

This table displays the number of teacher misassignments (teachers assigned without proper legal authorization) and the number of vacant teacher positions (not filled by a single designated teacher assigned to teach the entire course at the beginning of the school year or semester). Please note: Total teacher misassignments includes the number of misassignments of teachers of English Learners.

Teacher Misassignments and Vacant Teacher Positions						
	Dunham CS			Dunham ES		
	09-10	10-11	11-12	09-10	10-11	11-12
Teacher Misassignments of English Learners	✕	0	0	0	0	0
Total Teacher Misassignments	✕	0	0	0	0	0
Vacant Teacher Positions	✕	0	0	0	0	0

### No Child Left Behind Compliant Teachers

NCLB requires that all teachers of core academic subject areas be “highly qualified.” In general, for a teacher to be considered highly qualified, they must have a bachelor’s degree, an appropriate California teaching credential, and have demonstrated competence for each core subject he or she teaches. The table displays data regarding NCLB compliant teachers from the 2010-11 school year. For more information on teacher qualifications related to NCLB, please visit [www.cde.ca.gov/nclb/sr/tq](http://www.cde.ca.gov/nclb/sr/tq).

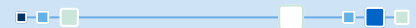
No Child Left Behind Compliant Teachers		
	Percent of Classes in Core Academic Subjects	
	Taught by NCLB Compliant Teachers	Taught by Non-NCLB Compliant Teachers
Dunham CS	100%	0%
Dunham ES	100%	0%
All Schools in District	100%	0%
High-Poverty Schools in District	✕	✕
Low-Poverty Schools in District	✕	✕

✕ Dunham Elementary Charter School opened in the 2010-11 school year. Therefore, no data prior to 2010-11 is available.  
 ✕ Not applicable.

### Academic Counselors and School Support Staff

This table displays information about academic counselors and support staff at the school and their full-time equivalent (FTE).

Academic Counselors and School Support Staff		
Academic Counselors: FTE and Ratio		
Number of Academic Counselors	0.00	
Ratio of Students Per Academic Counselor	✕	
Support Staff (FTE)	Dunham	
	CS	ES
Social/Behavioral or Career Development Counselors	✕	0.06
Library Media Teacher (Librarian)	0.06	0.00
Library Media Services Staff (Paraprofessional)	0.00	0.20
Psychologist	0.20	0.06
Social Worker	0.06	0.00
Nurse	0.09	0.09
Speech/Language/Hearing Specialist	0.40	0.40
Resource Specialist (non-teaching)	0.60	0.60



**NCLB Note:** High-poverty schools are defined as those schools with student participation of approximately 75% or more in the free and reduced priced meals program. Low-poverty schools are those with student participation of approximately 25% or less in the free and reduced priced meals program.

### Financial Data

The financial data displayed in the SARC is from the 2009-10 fiscal year. The most current fiscal information available provided by the state is always two years behind the current school year, and one year behind most other data included in this report. For more detailed financial information, please visit [www.cde.ca.gov/ds/fd/cs](http://www.cde.ca.gov/ds/fd/cs) and [www.cde.ca.gov/ds/fd/ec](http://www.cde.ca.gov/ds/fd/ec).

### District Financial Data

This table displays district teacher and administrative salary information and compares the figures to the state averages for districts of the same type and size based on the salary schedule. Note the district salary data does not include benefits.

District Salary Data		
Category	Dunham SD	Similar Sized District
Beginning Teacher Salary	⊛	\$38,744
Mid-Range Teacher Salary	⊛	\$55,509
Highest Teacher Salary	⊛	\$70,567
Average Principal Salary (Elementary School)	⊛	\$92,338
Average Principal Salary (Middle School)	⊛	\$96,427
Superintendent Salary	⊛	\$109,381
Teacher Salaries — Percent of Budget	39%	37%
Administrative Salaries — Percent of Budget	7%	7%

### Financial Data Comparison

The following table displays the school's per pupil expenditures from unrestricted sources and the school's average teacher salary and compares it to the district and state data.

Financial Data Comparison		
	Expenditures Per Pupil From Unrestricted Sources	Annual Average Teacher Salary
Dunham ES	\$2,830	\$52,641
Dunham SD	\$2,830	\$52,641
California	\$5,455	\$57,071
School and District — Percent Difference	◆	◆
School and California — Percent Difference	-92.8%	-8.4%

⊛ Single-site districts are not required to display this data. (*Education Code* Section 41409.3).

◆ The percent difference does not apply to single-site districts.

⊞ Dunham Elementary Charter School opened in the 2010-11 school year. Financial data displayed here comes from the 2009-10 school year. Therefore, there is no data to report.

Data for this year's SARC was provided by the California Department of Education (CDE), school and district offices. For additional information on California schools and districts, please visit DataQuest at <http://data1.cde.ca.gov/dataquest>. DataQuest is an online resource that provides reports for accountability, test data, enrollment, graduates, dropouts, course enrollments, staffing, and data regarding English Learners. Additionally, Ed-Data in partnership with the CDE, provides extensive financial, demographic, and performance information about California's public kindergarten through grade twelve school districts and schools. More information can be found at [www.ed-data.k12.ca.us/Pages/Home.aspx](http://www.ed-data.k12.ca.us/Pages/Home.aspx).

All data accurate as of December 2011.

### School Financial Data

The following table displays the school's average teacher salary and a breakdown of the school's expenditures per pupil from unrestricted and restricted sources.

School Financial Data	
Dunham CS	
Total Expenditures Per Pupil	⊞
Expenditures Per Pupil From Restricted Sources	⊞
Expenditures Per Pupil From Unrestricted Sources	⊞
Annual Average Teacher Salary	⊞
Dunham ES	
Total Expenditures Per Pupil	\$3,155
Expenditures Per Pupil From Restricted Sources	\$325
Expenditures Per Pupil From Unrestricted Sources	\$2,830
Annual Average Teacher Salary	\$52,641



### School Accountability Report Card

PUBLISHED BY:



www.sia-us.com | 800.487.9234