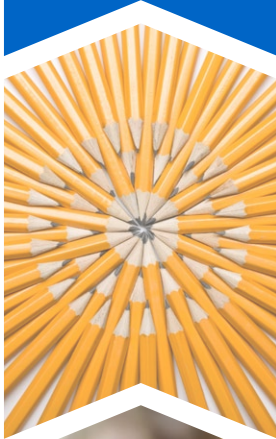


SARC

2015-16
School Accountability
Report Card

Published in 2016-17



Dunham Charter & Dunham Elementary Schools

Christin Barkas
Principal/superintendent
cbarkas@dunhamsd.k12.ca.us

4111 Roblar Road
Petaluma, CA 94952

Charter Grades: TK-6
Elementary Grade: 6
Phone: (707) 795-5050
www.dunhamsd.org

Charter CDS Code: 49-70672-0122440
Elementary CDS Code: 49-70672-6051700

Dunham SD



A Note to the Reader

At the beginning of the 2012-13 school year, Dunham School District expanded its K-6 charter school to TK-6, but continues to operate a sixth-grade district class. The district class benefits from sharing resources with the charter school. Please keep this in mind when reviewing and interpreting the data in this School Accountability Report Card.

Principal's Message

Dunham Charter School

Dunham Charter School is located on the same campus as Dunham Elementary School. Our school is one of two in our small district and serves 193 students in grades TK-6. Approximately 23 percent of our students are in the free and reduced-price lunch program. Our school community is a blend of families from all over the south Sonoma County area. More than 85 percent of students attending Dunham School come from other districts. We have one class per grade level, which has helped us to create a true sense of family and stability for our students as they move through grade levels with the same group of students. Our vision statement reflects our values and goals: In partnership with our families, Dunham is committed to providing an educational experience that will ready students for successful living in the 21st century. Our consistently high test scores is one indicator of our success in carrying out our vision.

Dunham Elementary School

Dunham Elementary School is nestled in the rural dairy lands of Northern Petaluma. Our school, established in 1870, is one of two in our small district and serves nine students in grade 6. Approximately 33 percent of our students receive free or reduced-price lunch. Our school community is a blend of families from all over the south Sonoma County area. More than 82 percent of students attending Dunham School come from other districts. In partnership with our families, Dunham Elementary School is committed to providing an educational experience that will ready students for successful living in the 21st century. Our consistently high test scores are one indicator of our success in carrying out our vision.

Parental Involvement

Parents are integral to our schools. Due to high interdistrict participation, parents are extremely involved in their child's education. Based upon data from the School Site Council (SSC) Survey, 90 percent of our parents reported they feel they are a part of the school community. Other areas for organized involvement of parents in the school include our school Parent Teacher Organization (PTO). Most of our families join the PTO and participate in at least some of the PTO activities.

We have an active SSC with strong parent participation, as well as an active community-based school board.

For more information on how to become involved at the school, please contact the school secretary, Lori Nommsen, at (707) 795-5050 or lnommsen@dunhamsd.k12.ca.us.

School Safety

The key elements of the adopted safety plan include the following:

- Levels of emergencies
- Plan implementation
- Planning, communication
- Emergency actions
- Emergency-preparedness procedures
- Responsibilities of staff
- Emergency teams
- Personal preparedness

The school safety plan was last reviewed, updated and discussed with the school faculty in January 2017.

Professional Development

All staff at Dunham School participates in extensive training. Our instructional assistants are included in any relevant training provided to the teachers. Topics for staff development are determined by staff and are guided by the annual school plan. Prior year assessment data are used to determine areas of emphasis for staff development. Curriculum adoptions are fully supported with more than adequate staff development prior to implementation of the new curriculum materials.



School Accountability Report Card

In accordance with state and federal requirements, the School Accountability Report Card (SARC) is put forth annually by all public schools as a tool for parents and interested parties to stay informed of the school's progress, test scores and achievements.

Mission Statement

In partnership with our families, Dunham Elementary School is committed to providing an educational experience that will ready students for successful living in the 21st century.

Governing Board

Spencer Crum
President

John Lehmann
Trustee

Meredith Regan
Trustee

Rachael Zell
Trustee

Lisa Poncia
Trustee

Professional Development Days

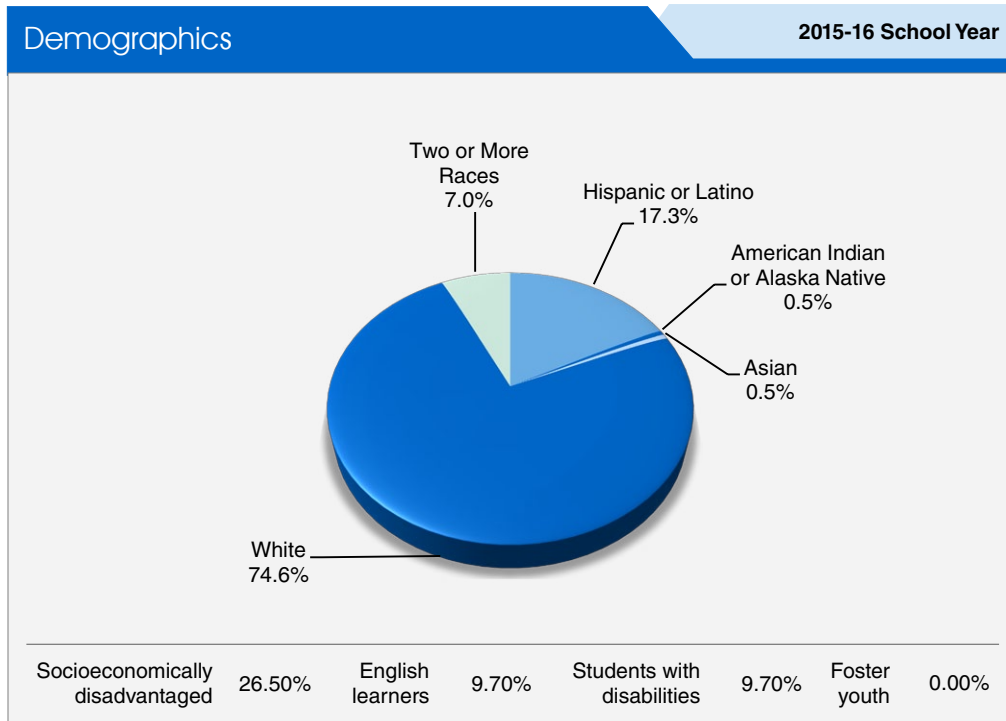
Three-Year Data

	2014-15	2015-16	2016-17
Dunham CS & Dunham ES	3 days	6 days	6 days



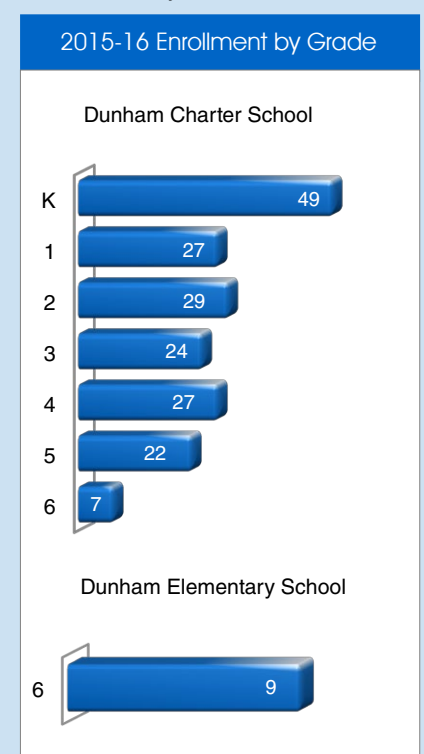
Enrollment by Student Group: Dunham Charter School

The total enrollment at the school was 185 students for the 2015-16 school year. The pie chart displays the percentage of students enrolled in each group.



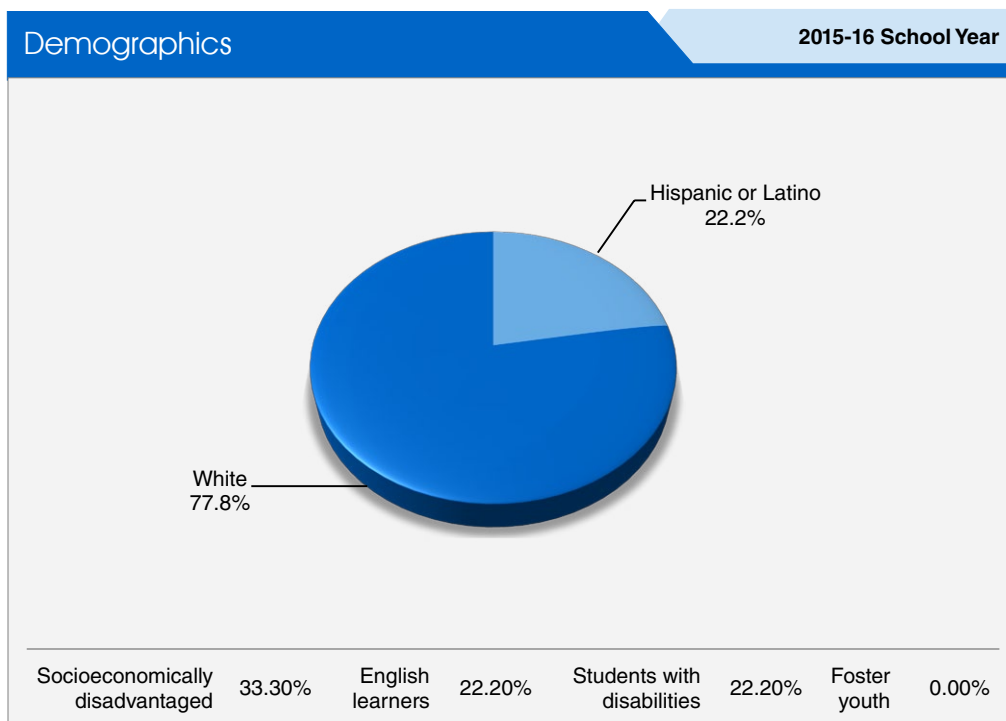
Enrollment by Grade

The bar graph displays the total number of students enrolled in each grade for the 2015-16 school year.



Enrollment by Student Group: Dunham Elementary School

The total enrollment at the school was 9 students for the 2015-16 school year. The pie chart displays the percentage of students enrolled in each group.



Types of Services Funded

The district receives categorical funding for the following programs:

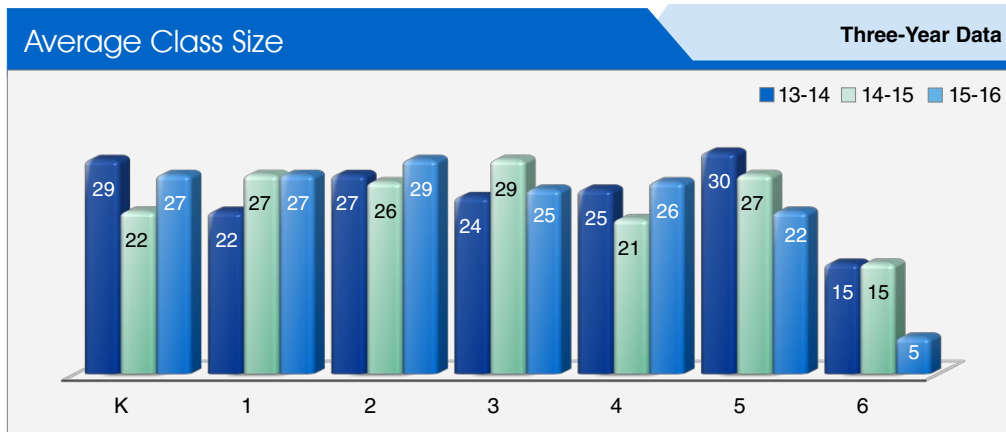
- Economic Impact Aid (EIA)
- Special Education
- Title I
- Title II, Part A
- Title III

Funding is used to provide the following services: Class Size Reduction in first grade, intervention services for students in grades 2-6, English language development support for all English learners, staff development and library services.



Class Size Distribution: Dunham Charter School

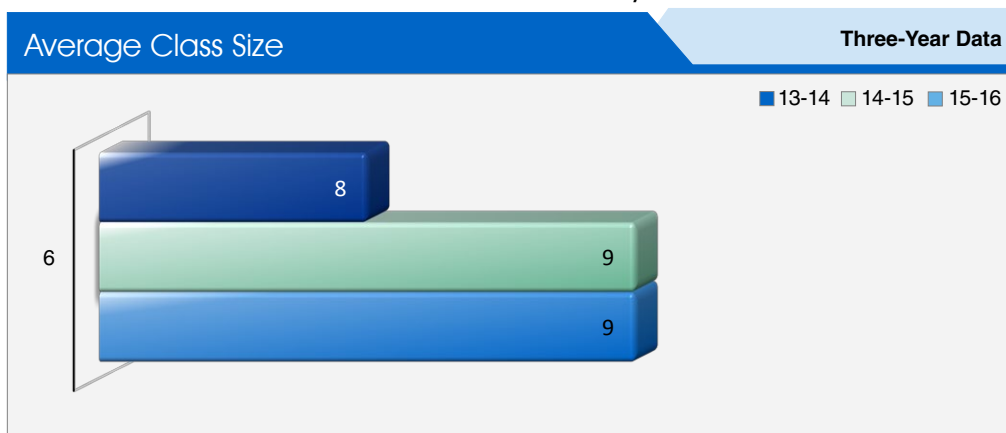
The bar graph displays the three-year data for average class size, and the table displays the three-year data for the number of classrooms by size. The number of classes indicates how many classrooms fall into each size category (a range of total students per classroom). At the secondary school level, this information is reported by subject area rather than grade level.



Number of Classrooms by Size **Three-Year Data**

Grade	2013-14			2014-15			2015-16		
	Number of Students								
	1-20	21-32	33+	1-20	21-32	33+	1-20	21-32	33+
K		1		1	1			1	
1		1			1			1	
2		1			1			1	
3		1			1			1	
4		1			1			1	
5		1			1			1	
6	1			1			1		

Class Size Distribution: Dunham Elementary School



Number of Classrooms by Size **Three-Year Data**

Grade	2013-14			2014-15			2015-16		
	Number of Students								
	1-20	21-32	33+	1-20	21-32	33+	1-20	21-32	33+
6	1			1			1		

Suspensions and Expulsions

This table shows the school, district, and state suspension and expulsion rates for the most recent three-year period. Note: Students are only counted one time, regardless of the number of suspensions.

Suspension and Expulsion Rates

Dunham CS			
	13-14	14-15	15-16
Suspension rates	6.7%	2.0%	1.6%
Expulsion rates	0.0%	0.0%	0.0%
Dunham ES			
	13-14	14-15	15-16
Suspension rates	0.0%	1.0%	0.0%
Expulsion rates	0.0%	0.0%	0.0%
Dunham SD			
	13-14	14-15	15-16
Suspension rates	6.4%	2.4%	1.5%
Expulsion rates	0.0%	0.0%	0.0%
California			
	13-14	14-15	15-16
Suspension rates	4.4%	3.8%	3.7%
Expulsion rates	0.1%	0.1%	0.1%

Public Internet Access

Internet access is available at public libraries and other locations that are publicly accessible (e.g., the California State Library). Access to the internet at libraries and public locations is generally provided on a first-come, first-served basis. Other use restrictions include the hours of operation, the length of time that a workstation may be used (depending on availability), the types of software programs available at a workstation, and the ability to print documents.



CAASPP Test Results for All Students: Science (grades 5, 8 and 10)

Science test results include California Standards Tests (CSTs), California Modified Assessment (CMA) and California Alternate Performance Assessment (CAPA) in grades 5, 8 and 10. The tables show the percentage of students scoring at proficient or advanced. Dunham Elementary School serves students in grade 6, therefore the scores shown are for Dunham Charter School only.

Percentage of Students Scoring at Proficient or Advanced							Three-Year Data		
Subject	Dunham CS			Dunham SD			California		
	13-14	14-15	15-16	13-14	14-15	15-16	13-14	14-15	15-16
Science	64%	57%	50%	64%	57%	50%	60%	56%	54%

CAASPP Test Results by Student Group: Science (grades 5, 8 and 10)

Science test results include CSTs, CMA, and CAPA in grades 5, 8, and 10. The "Proficient or Advanced" is calculated by taking the total number of students who scored proficient or Advanced on the science assessment divided by the total number of students with valid scores.

Percentage of Students Scoring at Proficient or Advanced				2015-16 School Year	
Group	Total Enrollment	Number of Students with Valid Scores	Percentage of Students with Valid Scores	Percentage Proficient or Advanced	
All students	23	20	86.96%	50.00%	
Male	14	13	92.86%	53.85%	
Female	❖	❖	❖	❖	
Black or African-American	❖	❖	❖	❖	
American Indian or Alaska Native	❖	❖	❖	❖	
Asian	❖	❖	❖	❖	
Filipino	❖	❖	❖	❖	
Hispanic or Latino	❖	❖	❖	❖	
Native Hawaiian or Pacific Islander	❖	❖	❖	❖	
White	17	15	88.24%	46.67%	
Two or more races	❖	❖	❖	❖	
Socioeconomically disadvantaged	❖	❖	❖	❖	
English learners	❖	❖	❖	❖	
Students with disabilities	❖	❖	❖	❖	
Students receiving Migrant Education services	❖	❖	❖	❖	
Foster youth	❖	❖	❖	❖	

CAASPP Test Results for All Students: English Language Arts/Literacy and Mathematics (grades 3-8 and 11)

The table below shows the percentage of students meeting or exceeding the state standards in English language arts (ELA) and literacy and mathematics. Due to low enrollment scores are not shown for Dunham Elementary School.

Percentage of Students Meeting or Exceeding State Standards					Two-Year Data	
Subject	Dunham CS		Dunham SD		California	
	14-15	15-16	14-15	15-16	14-15	15-16
English language arts/literacy	45%	63%	46%	64%	44%	48%
Mathematics	44%	58%	43%	60%	33%	36%

❖ Scores are not shown when the number of students tested is 10 or fewer, either because the number of students tested in this category is too small for statistical accuracy or to protect student privacy.

California Assessment of Student Performance and Progress (CAASPP)

For the 2015-16 school year, the CAASPP consists of several key components, including:

California Alternate Assessment (CAA) test includes both ELA/literacy and mathematics in grades 3-8 and 11. The CAA is given to those students with significant cognitive disabilities which prevent them from taking the Smarter Balanced Assessments with universal tools, designated supports or accommodations.

Smarter Balanced Assessments include ELA/literacy in grades 3-8 and 11. Smarter Balanced Assessments are designed to measure student progress toward college and career readiness.

The assessments under CAASPP show how well students are doing in relation to the state-adopted content standards. On each of these assessments, student aggregate scores are reported as achievement standards. For more information on the CAASPP assessments, please visit www.cde.ca.gov/ta/tg/ca.

CAASPP by Student Group: English Language Arts/Literacy and Mathematics

The tables on the following pages display the percentage of students that met or exceeded state standards in English language arts and mathematics for the school by student groups for grades 3-6. Due to low enrollment, scores are not shown for Dunham Elementary School or Dunham Charter School grade 6.

The "percentage met or exceeded" is calculated by taking the total number of students who met or exceeded the standard on the Smarter Balanced Summative Assessment plus the total number of students who met the standard on the CAAs divided by the total number of students who participated in both assessments.

Note: The number of students tested includes all students who participated in the test whether they received a score or not. However, the number of students tested is not the number that was used to calculate the achievement level percentages. The achievement level percentages are calculated using only students who received scores.



CAASPP Results by Student Group: English Language Arts and Mathematics - Grade 3

Percentage of Students Meeting or Exceeding State Standards

2015-16 School Year

English Language Arts: Grade 3

Group	Total Enrollment	Number Tested	Percentage Tested	Percentage Met or Exceeded
All students	26	25	96.20%	88.00%
Male	❖	❖	❖	❖
Female	16	15	93.80%	86.70%
Black or African-American	❖	❖	❖	❖
American Indian or Alaska Native	❖	❖	❖	❖
Asian	❖	❖	❖	❖
Filipino	❖	❖	❖	❖
Hispanic or Latino	❖	❖	❖	❖
Native Hawaiian or Pacific Islander	❖	❖	❖	❖
White	18	17	94.40%	94.10%
Two or more races	❖	❖	❖	❖
Socioeconomically disadvantaged	❖	❖	❖	❖
English learners	❖	❖	❖	❖
Students with disabilities	❖	❖	❖	❖
Students receiving Migrant Education services	❖	❖	❖	❖
Foster youth	❖	❖	❖	❖

Mathematics: Grade 3

Group	Total Enrollment	Number Tested	Percentage Tested	Percentage Met or Exceeded
All students	26	25	96.20%	84.00%
Male	❖	❖	❖	❖
Female	16	15	93.80%	73.30%
Black or African-American	❖	❖	❖	❖
American Indian or Alaska Native	❖	❖	❖	❖
Asian	❖	❖	❖	❖
Filipino	❖	❖	❖	❖
Hispanic or Latino	❖	❖	❖	❖
Native Hawaiian or Pacific Islander	❖	❖	❖	❖
White	18	17	94.40%	88.20%
Two or more races	❖	❖	❖	❖
Socioeconomically disadvantaged	❖	❖	❖	❖
English learners	❖	❖	❖	❖
Students with disabilities	❖	❖	❖	❖
Students receiving Migrant Education services	❖	❖	❖	❖
Foster youth	❖	❖	❖	❖

❖ Scores are not shown when the number of students tested is 10 or fewer, either because the number of students tested in this category is too small for statistical accuracy or to protect student privacy.



CAASPP Results by Student Group: English Language Arts and Mathematics - Grade 4

Percentage of Students Meeting or Exceeding State Standards

2015-16 School Year

English Language Arts: Grade 4

Group	Total Enrollment	Number Tested	Percentage Tested	Percentage Met or Exceeded
All students	27	26	96.30%	30.80%
Male	16	15	93.80%	26.70%
Female	11	11	100.00%	36.40%
Black or African-American	❖	❖	❖	❖
American Indian or Alaska Native	❖	❖	❖	❖
Asian	❖	❖	❖	❖
Filipino	❖	❖	❖	❖
Hispanic or Latino	❖	❖	❖	❖
Native Hawaiian or Pacific Islander	❖	❖	❖	❖
White	20	19	95.00%	31.60%
Two or more races	❖	❖	❖	❖
Socioeconomically disadvantaged	❖	❖	❖	❖
English learners	❖	❖	❖	❖
Students with disabilities	❖	❖	❖	❖
Students receiving Migrant Education services	❖	❖	❖	❖
Foster youth	❖	❖	❖	❖

Mathematics: Grade 4

Group	Total Enrollment	Number Tested	Percentage Tested	Percentage Met or Exceeded
All students	27	26	96.30%	38.50%
Male	16	15	93.80%	46.70%
Female	11	11	100.00%	27.30%
Black or African-American	❖	❖	❖	❖
American Indian or Alaska Native	❖	❖	❖	❖
Asian	❖	❖	❖	❖
Filipino	❖	❖	❖	❖
Hispanic or Latino	❖	❖	❖	❖
Native Hawaiian or Pacific Islander	❖	❖	❖	❖
White	20	19	95.00%	42.10%
Two or more races	❖	❖	❖	❖
Socioeconomically disadvantaged	❖	❖	❖	❖
English learners	❖	❖	❖	❖
Students with disabilities	❖	❖	❖	❖
Students receiving Migrant Education services	❖	❖	❖	❖
Foster youth	❖	❖	❖	❖

❖ Scores are not shown when the number of students tested is 10 or fewer, either because the number of students tested in this category is too small for statistical accuracy or to protect student privacy.



CAASPP Results by Student Group: English Language Arts and Mathematics - Grade 5

Percentage of Students Meeting or Exceeding State Standards

2015-16 School Year

English Language Arts: Grade 5

Group	Total Enrollment	Number Tested	Percentage Tested	Percentage Met or Exceeded
All students	23	20	87.00%	60.00%
Male	14	12	85.70%	58.30%
Female	❖	❖	❖	❖
Black or African-American	❖	❖	❖	❖
American Indian or Alaska Native	❖	❖	❖	❖
Asian	❖	❖	❖	❖
Filipino	❖	❖	❖	❖
Hispanic or Latino	❖	❖	❖	❖
Native Hawaiian or Pacific Islander	❖	❖	❖	❖
White	17	14	82.40%	64.30%
Two or more races	❖	❖	❖	❖
Socioeconomically disadvantaged	❖	❖	❖	❖
English learners	❖	❖	❖	❖
Students with disabilities	❖	❖	❖	❖
Students receiving Migrant Education services	❖	❖	❖	❖
Foster youth	❖	❖	❖	❖

Mathematics: Grade 5

Group	Total Enrollment	Number Tested	Percentage Tested	Percentage Met or Exceeded
All students	23	20	87.00%	45.00%
Male	14	12	85.70%	58.30%
Female	❖	❖	❖	❖
Black or African-American	❖	❖	❖	❖
American Indian or Alaska Native	❖	❖	❖	❖
Asian	❖	❖	❖	❖
Filipino	❖	❖	❖	❖
Hispanic or Latino	❖	❖	❖	❖
Native Hawaiian or Pacific Islander	❖	❖	❖	❖
White	17	14	82.40%	35.70%
Two or more races	❖	❖	❖	❖
Socioeconomically disadvantaged	❖	❖	❖	❖
English learners	❖	❖	❖	❖
Students with disabilities	❖	❖	❖	❖
Students receiving Migrant Education services	❖	❖	❖	❖
Foster youth	❖	❖	❖	❖

❖ Scores are not shown when the number of students tested is 10 or fewer, either because the number of students tested in this category is too small for statistical accuracy or to protect student privacy.



Textbooks and Instructional Materials

The Dunham School District has sufficient textbooks and instructional materials for all students, including English learners, to use in class and to take home in the subjects of language arts, mathematics, history/social science and science. The math textbook, EngageNY, was adopted in 2015 and is on the California Department of Education approved list. The staff selected the English language arts curriculum, Houghton Mifflin, in 2016. Houghton Mifflin is on the California Department of Education approved list. Additionally, the staff selected new history/social science texts in 2005 and new science materials and text in 2006, in accordance with state textbook-adoption cycle. Visual and performing arts are offered as part of the core curriculum, and, as such, any materials or textbooks are provided for all students. Visual and performing arts are offered as part of the core curriculum, and, as such, any materials or textbooks are provided for all students.

Textbooks and Instructional Materials List		2016-17 School Year
Subject	Textbook	Adopted
Reading/language arts	Houghton Mifflin (K-6)	2016
Mathematics	EngageNY	2015
Science	FOSS (K-5)	2007
Science	Pearson (6)	2007
History/social science	Social Science, Harcourt (K-3)	2006
History/social science	Houghton Mifflin (4-6)	2006

Academic Counselors and School Support Staff

This table displays information about academic counselors and support staff at the school and their full-time equivalent (FTE).

Academic Counselors and School Support Staff Data		2015-16 School Year	
Academic Counselors	Dunham CS	Dunham ES	
FTE of academic counselors	0.30	0.00	
Average number of students per academic counselor	18	✧	
Support Staff	FTE	FTE	
Social/behavioral counselor	0.30	0.00	
Career development counselor	0.00	0.00	
Library media teacher (librarian)	0.06	0.00	
Library media services staff (paraprofessional)	0.00	0.00	
Psychologist	0.18	0.00	
Social worker	0.00	0.00	
Nurse	0.08	0.01	
Speech/language/hearing specialist	0.30	0.00	
Resource specialist (nonteaching)	0.90	0.10	

✧ Not applicable.

Availability of Textbooks and Instructional Materials

The following lists the percentage of pupils who lack their own assigned textbooks and instructional materials.

Percentage of Students Lacking Materials by Subject	
2016-17 School Year	
Reading/language arts	0%
Mathematics	0%
Science	0%
History/social science	0%
Visual and performing arts	0%
Foreign language	0%
Health	0%

Currency of Textbooks

This table displays the date when the most recent hearing was held to adopt a resolution on the sufficiency of instructional materials.

Currency of Textbooks	
2016-17 School Year	
Data collection date	9/13/2016

Quality of Textbooks

The following table outlines the criteria required for choosing textbooks and instructional materials.

Quality of Textbooks	
2016-17 School Year	
Criteria	Yes/No
Are the textbooks adopted from the most recent state-approved or local governing-board-approved list?	Yes
Are the textbooks consistent with the content and cycles of the curriculum frameworks adopted by the State Board of Education?	Yes
Do all students, including English learners, have access to their own textbooks and instructional materials to use in class and to take home?	Yes



School Facility Items Inspected

The table shows the results of the school's most recent inspection using the Facility Inspection Tool (FIT) or equivalent school form. The following is a list of items inspected.

- **Systems:** Gas systems and pipes, sewer, mechanical systems (heating, ventilation and air-conditioning)
- **Interior:** Interior surfaces (floors, ceilings, walls and window casings)
- **Cleanliness:** Pest/vermin control, overall cleanliness (school grounds, buildings, rooms and common areas)
- **Electrical:** Electrical systems (interior and exterior)
- **Restrooms/fountains:** Restrooms, sinks and drinking fountains (interior and exterior)
- **Safety:** Fire-safety equipment, emergency systems, hazardous materials (interior and exterior)
- **Structural:** Structural condition, roofs
- **External:** Windows/doors/gates/fences, playgrounds/school grounds

School Facility Good Repair Status

This inspection determines the school facility's good repair status using ratings of good condition, fair condition or poor condition. The overall summary of facility conditions uses ratings of exemplary, good, fair or poor. At the time of this school facility inspection, no deficiencies were found.

School Facility Good Repair Status		2016-17 School Year	
Items Inspected	Repair Status	Items Inspected	Repair Status
Systems	Good	Restrooms/fountains	Good
Interior	Good	Safety	Good
Cleanliness	Good	Structural	Good
Electrical	Good	External	Good
Overall summary of facility conditions			Exemplary
Date of the most recent school site inspection			11/4/2016
Date of the most recent completion of the inspection form			11/4/2016

Federal Intervention Program

Schools and districts will not be newly identified for Program Improvement (PI) in the 2016-17 school year under the Every Student Succeeds Act (ESSA) that became law in December 2015, which reauthorized the Elementary and Secondary Education Act (ESEA). Schools and districts receiving Title I, Part A funding for the 2015-16 school year and were "In PI" in 2015-16 will retain their same PI status and placement year for 2016-17. Schools and districts receiving Title I, Part A funding for the 2015-16 school year and either had a status of "Not in PI" for the 2015-16 school year or did not receive Title I, Part A funding in the 2014-15 school year will have a status of "Not in PI" for the 2016-17 school year. The percentage of schools identified for Program Improvement is calculated by taking the number of schools currently in PI within the district and dividing it by the total number of Title I schools within the district.

This table displays the 2016-17 Program Improvement status for the school and district. For detailed information about PI identification, please visit www.cde.ca.gov/ta/ac/ay/tidetermine.asp.

Federal Intervention Program		2016-17 School Year		
	Dunham CS	Dunham ES	Dunham SD	
Program Improvement status	Not In PI	Not In PI	Not In PI	
First year of Program Improvement	◇	◇	◇	
Year in Program Improvement	◇	◇	◇	
Number of schools currently in Program Improvement				0
Percentage of schools currently in Program Improvement				0.00%

◇ Not applicable. The schools and district are not in Program Improvement.



School Facilities

All students are adequately housed at Dunham. Classroom space is more than adequate for all programs, including special education. Playgrounds are very well maintained and provide a very generous play area for students. All classrooms have heating and air-conditioning. Restrooms are well maintained and are kept clean. One part-time cleaner comes in the evenings on a daily basis.

The Dunham Parent Teacher Organization (PTO) sponsors cleanup and landscaping days throughout the year in order to constantly improve the appearance of the facility. All classrooms are connected to the internet and are networked in order to share technology between classes.

The following safety measures are taken to ensure our students and staff have a safe and healthy environment: Our school is gated, and visitors must sign in at the school office and receive a visitor's pass to enter the campus.

Dunham Elementary School was built in 1971. The school has eight regular classrooms, a library, multipurpose room, reading classroom and special education room.

Over the summer of 2016, Dunham School added a new staff room, expanded the school office, and added a new portable classroom for first grade.

"Our school community is a blend of families from all over the south Sonoma County area."



Teacher Qualifications

This table shows information about teacher credentials and teacher qualifications. Teachers without a full credential include teachers with district and university internships, pre-internships, emergency or other permits, and waivers. For more information on teacher credentials, visit www.ctc.ca.gov.

Teacher Credential Information	Three-Year Data						
	Dunham SD	Dunham CS			Dunham ES		
	16-17	14-15	15-16	16-17	14-15	15-16	16-17
Teachers							
With a full credential	12	11	11	11	1	1	1
Without a full credential	0	0	0	0	0	0	0
Teaching outside subject area of competence (with full credential)	0	0	0	0	0	0	0

Teacher Misassignments and Vacant Teacher Positions

This table displays the number of teacher misassignments (positions filled by teachers who lack legal authorization to teach that grade level, subject area, student group, etc.) and the number of vacant teacher positions (not filled by a single designated teacher assigned to teach the entire course at the beginning of the school year or semester). Please note that total teacher misassignments includes the number of teacher misassignments of English learners.

Teacher Misassignments and Vacant Teacher Positions	Three-Year Data					
	Dunham CS			Dunham ES		
	14-15	15-16	16-17	14-15	15-16	16-17
Teachers						
Teacher misassignments of English learners	0	0	0	0	0	0
Total teacher misassignments	0	0	0	0	0	0
Vacant teacher positions	0	0	0	0	0	0

Core Academic Classes Taught by Highly Qualified Teachers

High-poverty schools are defined as those schools with student eligibility of approximately 40 percent or more in the free and reduced-priced meals program. Low-poverty schools are those with student eligibility of approximately 39 percent or less in the free and reduced-priced meals program. For more information about ESEA teacher requirements, visit www.cde.ca.gov/nclb/sr/tq.

Highly Qualified Teachers	2015-16 School Year	
	Percentage of Classes in Core Academic Subjects	
	Taught by Highly Qualified Teachers	Not Taught by Highly Qualified Teachers
Dunham CS	100.00%	0.00%
Dunham ES	100.00%	0.00%
All schools in district	100.00%	0.00%
High-poverty schools in district	◇	◇
Low-poverty schools in district	100.00%	0.00%

◇ Not applicable.



California Physical Fitness Test

Each spring, all students in grades 5, 7 and 9 are required to participate in the California Physical Fitness Test (PFT). The Fitnessgram is the designated PFT for students in California public schools put forth by the State Board of Education. The PFT measures six key fitness areas:

1. Aerobic Capacity
2. Body Composition
3. Flexibility
4. Abdominal Strength and Endurance
5. Upper Body Strength and Endurance
6. Trunk Extensor Strength and Flexibility

Encouraging and assisting students in establishing lifelong habits of regular physical activity is the primary goal of the Fitnessgram. The table shows the percentage of students meeting the fitness standards of being in the "healthy fitness zone" for the most recent testing period. For more detailed information on the California PFT, please visit www.cde.ca.gov/ta/tg/pf.

Percentage of Students Meeting Fitness Standards

2015-16 School Year

Dunham CS Grade 5

Four of six standards	9.5%
Five of six standards	14.3%
Six of six standards	76.2%



District Financial Data

This table displays district teacher and administrative salary information and compares the figures to the state averages for districts of the same type and size based on the salary schedule. Note: The district salary data does not include benefits.

District Salary Data	2014-15 Fiscal Year	
	Dunham SD	Similar Sized District
Beginning teacher salary	◇	\$41,085
Midrange teacher salary	◇	\$59,415
Highest teacher salary	◇	\$75,998
Average elementary school principal salary	◇	\$100,438
Superintendent salary	◇	\$116,069
Teacher salaries: percentage of budget	30%	33%
Administrative salaries: percentage of budget	6%	7%

Expenditures Per Pupil

Supplemental/restricted expenditures come from money whose use is controlled by law or by a donor. Money that is designated for specific purposes by the district or governing board is not considered restricted. Basic/unrestricted expenditures are from money whose use, except for general guidelines, is not controlled by law or by a donor.

Financial Data Comparison

This table displays the school's per-pupil expenditures from unrestricted sources and the school's average teacher salary and compares it to the district and state data.

Financial Data Comparison	2014-15 Fiscal Year	
	Expenditures Per Pupil From Unrestricted Sources	Annual Average Teacher Salary
Dunham CS	\$9,513	\$67,265
Dunham ES	\$9,513	\$67,265
Dunham SD	\$9,513	\$67,265
California	\$5,677	\$60,985
Dunham CS - Percentage Difference		
School and district	+0.0%	+0.0%
School and California	+67.6%	+10.3%
Dunham ES - Percentage Difference		
School and district	+0.0%	+0.0%
School and California	+67.6%	+10.3%

◇ Information is not available at this time.

Financial Data

The financial data displayed in this SARC is from the 2013-14 fiscal year. The most current fiscal information available provided by the state is always two years behind the current school year, and one year behind most other data included in this report. For detailed information on school expenditures for all districts in California, see the California Department of Education (CDE) Current Expense of Education & Per-pupil Spending Web page at www.cde.ca.gov/ds/fd/ec. For information on teacher salaries for all districts in California, see the CDE Certificated Salaries & Benefits Web page at www.cde.ca.gov/ds/fd/cs. To look up expenditures and salaries for a specific school district, see the Ed-Data website at www.ed-data.org.

School Financial Data

The following table displays the school's average teacher salary and a breakdown of the school's expenditures per pupil from unrestricted and restricted sources.

School Financial Data	
2014-15 Fiscal Year	
Dunham CS	
Total expenditures per pupil	\$10,815
Expenditures per pupil from restricted sources	\$1,302
Expenditures per pupil from unrestricted sources	\$9,513
Annual average teacher salary	\$67,265
Dunham CS	
Total expenditures per pupil	\$10,815
Expenditures per pupil from restricted sources	\$1,302
Expenditures per pupil from unrestricted sources	\$9,513
Annual average teacher salary	\$67,265

Data for this year's SARC was provided by the California Department of Education and school and district offices. For additional information on California schools and districts and comparisons of the school to the district, the county and the state, please visit DataQuest at <http://data1.cde.ca.gov/dataquest>. DataQuest is an online resource that provides reports for accountability, test data, enrollment, graduates, dropouts, course enrollments, staffing and data regarding English learners. Per Education Code Section 35256, each school district shall make hard copies of its annually updated report card available, upon request, on or before February 1.

All data accurate as of January 2017.

School Accountability Report Card

PUBLISHED BY:

SIA School
Innovations
& Achievement
www.sia-us.com | 800.487.9234